

Electric motor-pump units

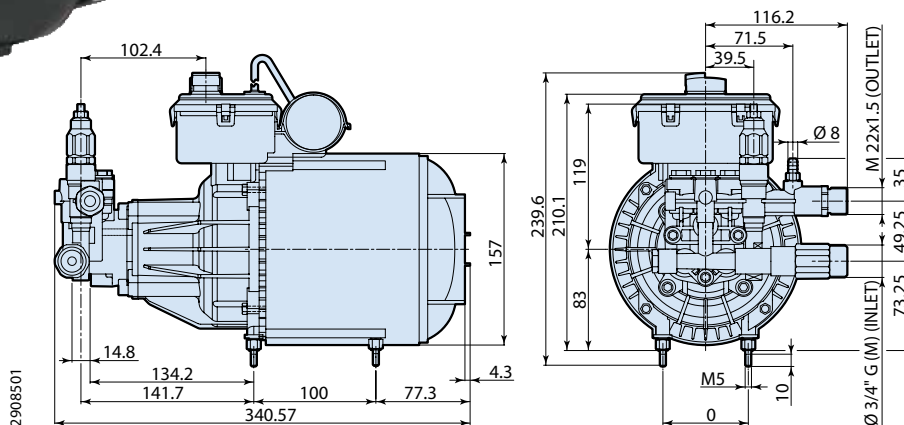
> 101 Accessories
Accessori



290 SERIES



TSS version



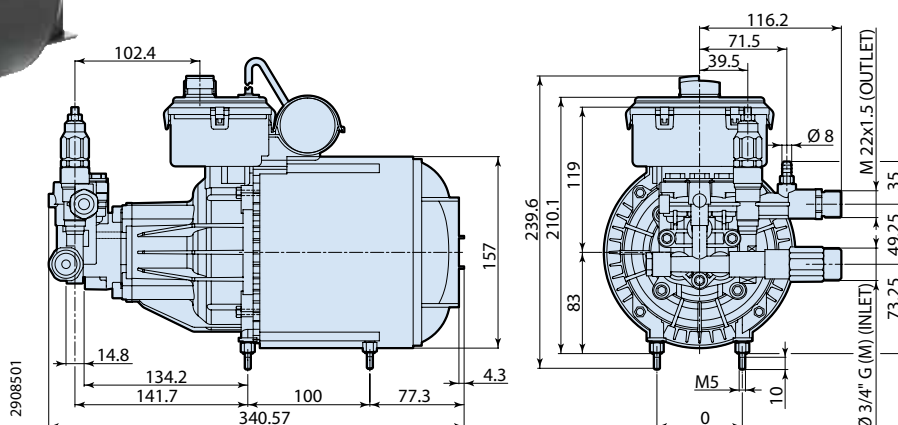
HRM-A 2800 rpm

Pump - Pompa	Cod.	Output - Portata		Pressure - Pressione		Power - Potenza		RPM	1 ~ 50 Hz	Weight	Price
		l/min	gpm	bar	psi	hp	kw				
HRM-A 6.12 REG	23004	5,5	1.46	115	1700	1,6	1,2	2800	230	13,5	327,00
HRM-A 8.14 REG	22118	8	2.11	140	2000	2.65	1,9	2800	230	14	364,00
HRM-A 8.14 TSS	22295	8	2.11	140	2000	2.65	1,9	2800	230	14	352,00

Disponibile anche la versione 60 Hz, previa verifica tecnica / Hz60 Hz version available upon technical verification



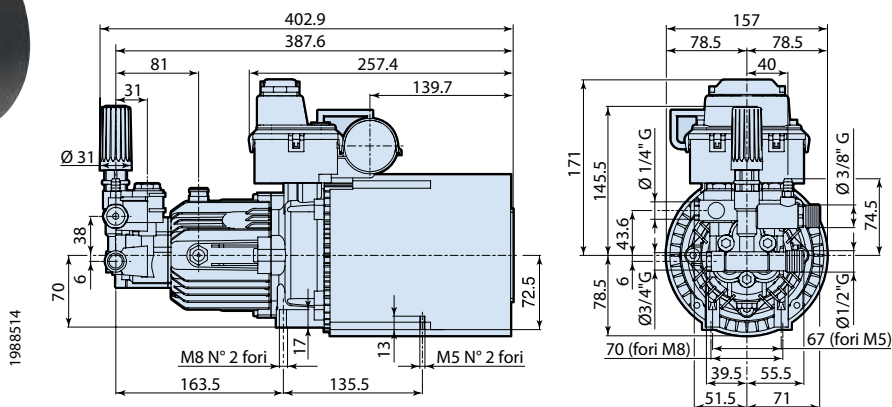
TSS version



HRM-O 2800 rpm

HRM-O 6.12 REG	23006	5,5	1.46	115	1700	1,6	1,2	2800	230	15,5	382,00
HRM-O 9.15 REG	22119	9	2.5	150	2200	3.15	2,3	2800	230	16	420,00
HRM-O 9.15 TSS	22296	9	2.5	150	2200	3.15	2,3	2800	230	16	407,00

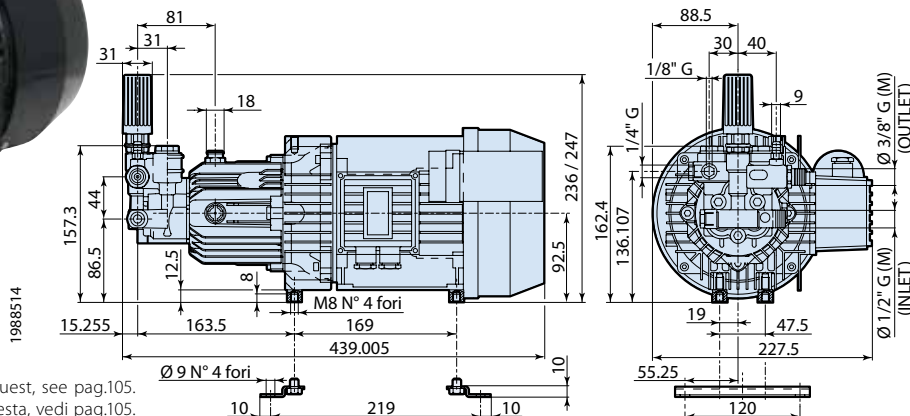
Disponibile anche la versione 60 Hz, previa verifica tecnica / Hz60 Hz version available upon technical verification



HPZ 2800 rpm

Pump - Pompa	Cod.	Output - Portata		Pressure - Pressione		Power - Potenza		RPM	1 ~ 50 Hz	Weight	Price
		l/min	gpm	bar	psi	hp	kw				
HPZ 8.14 REG	21388	8	2.1	140	2000	3	2,2	2800	230	16	485,00
HPZ 8.14 TSS/REG	21389	8	2.1	140	2000	3	2,2	2800	230	16,2	582,00

Disponibile anche la versione 60 Hz, previa verifica tecnica / 60 Hz version available upon technical verification



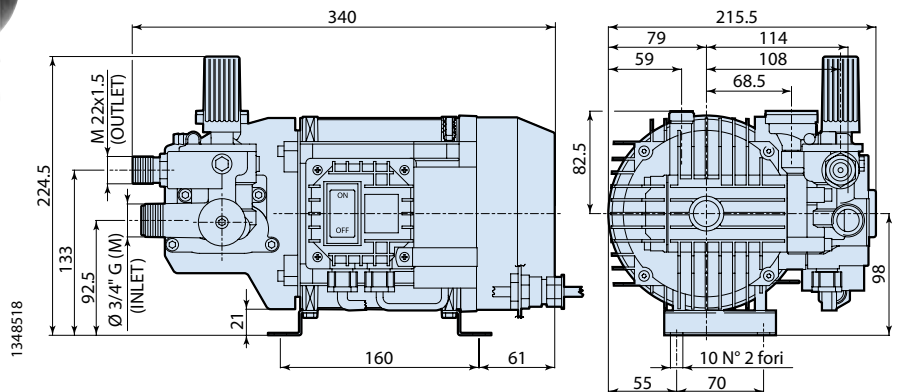
Base on request, see pag.105.
Piedi a richiesta, vedi pag.105.

HPJ 2800 rpm

Pump - Pompa	Cod 1 ~	Cod 3 ~	Output Portata		Pressure Pressione		Power Potenza		RPM	1 ~ 50 Hz	3 ~ 50 H	Weight	Price 1 ~	Price 3 ~
			l/min	gpm	bar	psi	hp	kw						
HPJ 8.12 REG	20415	-	8	2.11	120	1740	2.5	1,8	2800	230	-	20,4	574,00	-
HPJ 8.12 TSS/REG	20994	-	8	2.11	120	1740	2.5	1,8	2800	230	-	20,4	626,00	-
HPJ 8.15 REG	20416	-	8	2.11	150	2200	3	2,2	2800	230	-	21	601,00	-
HPJ 8.15 TSS/REG	20995	-	8	2.11	150	2200	3	2,2	2800	230	-	21	652,00	-
HPJ 10.12 REG	20417	-	10	2.64	120	1740	3	2,2	2800	230	-	21	601,00	-
HPJ 10.12 TSS/REG	20996	-	10	2.64	120	1740	3	2,2	2800	230	-	21	652,00	-
HPJ 10.15 REG	-	20418	10	2.64	150	2200	4	3	2800	-	380	21,3	-	630,00
HPJ 10.15 TSS/REG	-	21073	10	2.64	150	2200	4	3	2800	-	380	21,3	-	681,00
HPJ 11.11 REG	20419	-	11	2.90	110	1600	3	2,2	2800	230	-	21	601,00	-
HPJ 11.11 TSS/REG	20997	-	11	2.90	120	1740	3	2,2	2800	230	-	21	652,00	-
HPJ 11.14 REG	-	20420	11	2.90	140	2000	4	3	2800	-	380	21,3	-	630,00

Disponibile anche la versione 60 Hz, previa verifica tecnica / 60 Hz version available upon technical verification

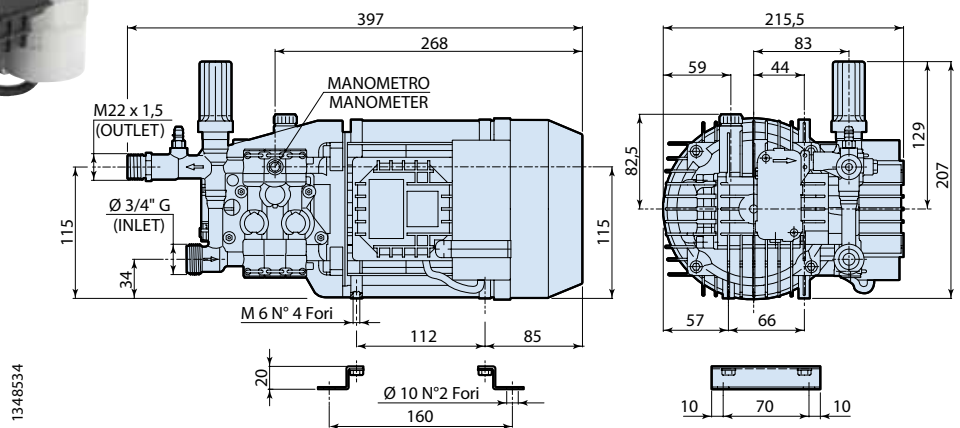
134 SERIES



HPV 2800 - 1750 rpm

Pump - Pompa	Cod.	Output - Portata		Pressure - Pressione		Power - Potenza		RPM	1 ~	Weight	Price
		l/min	gpm	bar	psi	hp	kw	N° giri/1'	volt	Kg	€
HPV 8.11	20463	8,5	2.25	100	1450	2	1,5	2800	230 ^a	13,8	465,00
HPV 11.07	9253	11	2.90	70	1000	1.8	1,3	2800	230 ^a	13,8	465,00
HPV 2 G15	9256	8	2.11	100	1450	2	1,5	1750	115 ^b	14	490,00

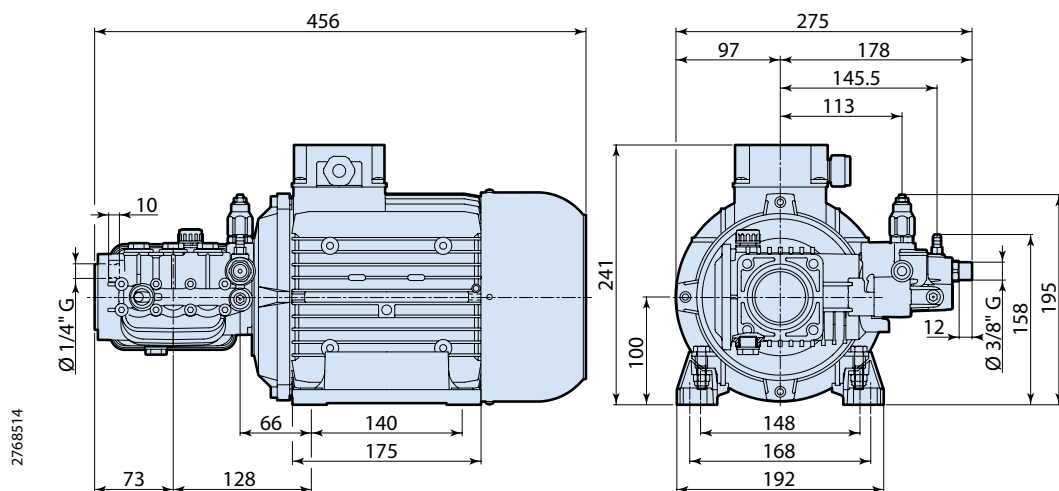
a) 1~ 50 Hz • b) 1~ 60 Hz



HPV-O 2800 rpm

Pump - Pompa	Cod.	Output - Portata		Pressure - Pressione		Power - Potenza		RPM	1 ~ 50 Hz	Weight	Price
		l/min	gpm	bar	psi	hp	kw	N° giri/1'	volt	Kg	€
HPV-O 8.13 EM TSS	23851	8	2,11	130	1900	2,5	2	2800	230	15	516,00
HPV-O 8.15 EM TSS	25047	8	2,11	150	2200	3	2,2	2800	230	17	544,00 NEW
HPV-O 11.09 EM TSS	23906	11	2,90	90	1300	2,5	2	2800	230	15	516,00

276 SERIES



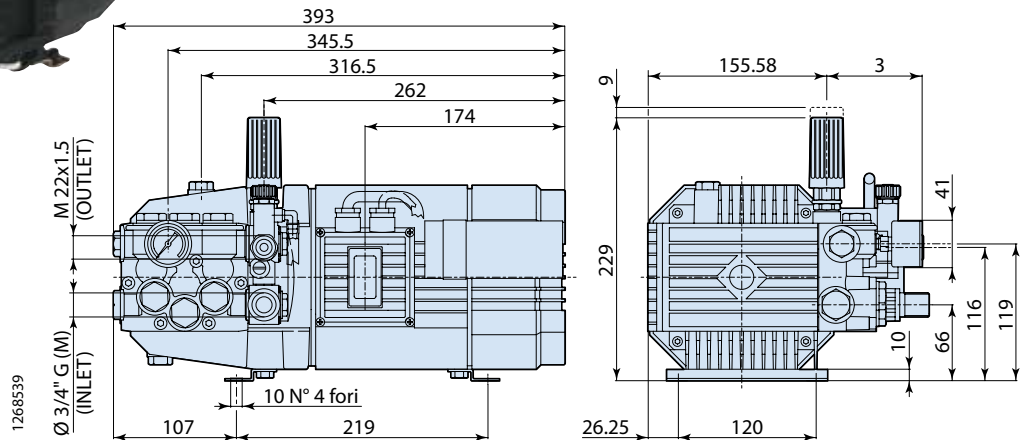
HRS 1450 rpm

Pump - Pompa	Cod 1 ~	Cod 3 ~	Output Portata		Pressure Pressione		Power Potenza		RPM	1 ~	3 ~	Weight	Price 1 ~	Price 3 ~
			l/min	gpm	bar	psi	hp	kw		N°giri/1'	volt		volt	€
HRS 11.11 REG	22117	-	11	2.90	110	1600	3	2,2	1450	230	-	30	865,00	-
HRS 11.17 REG	-	22120	11	2.90	170	2500	5	3,7	1450	-	230/400	30	-	898,00
HRS 13.17 REG	-	22121	13	3.43	170	2500	5.5	4	1450	-	230/400	30	-	898,00
HRS 15.15 REG	-	22122	15	3.96	150	2200	5.5	4	1450	-	230/400	30	-	898,00

126 SERIES



• model
brass head



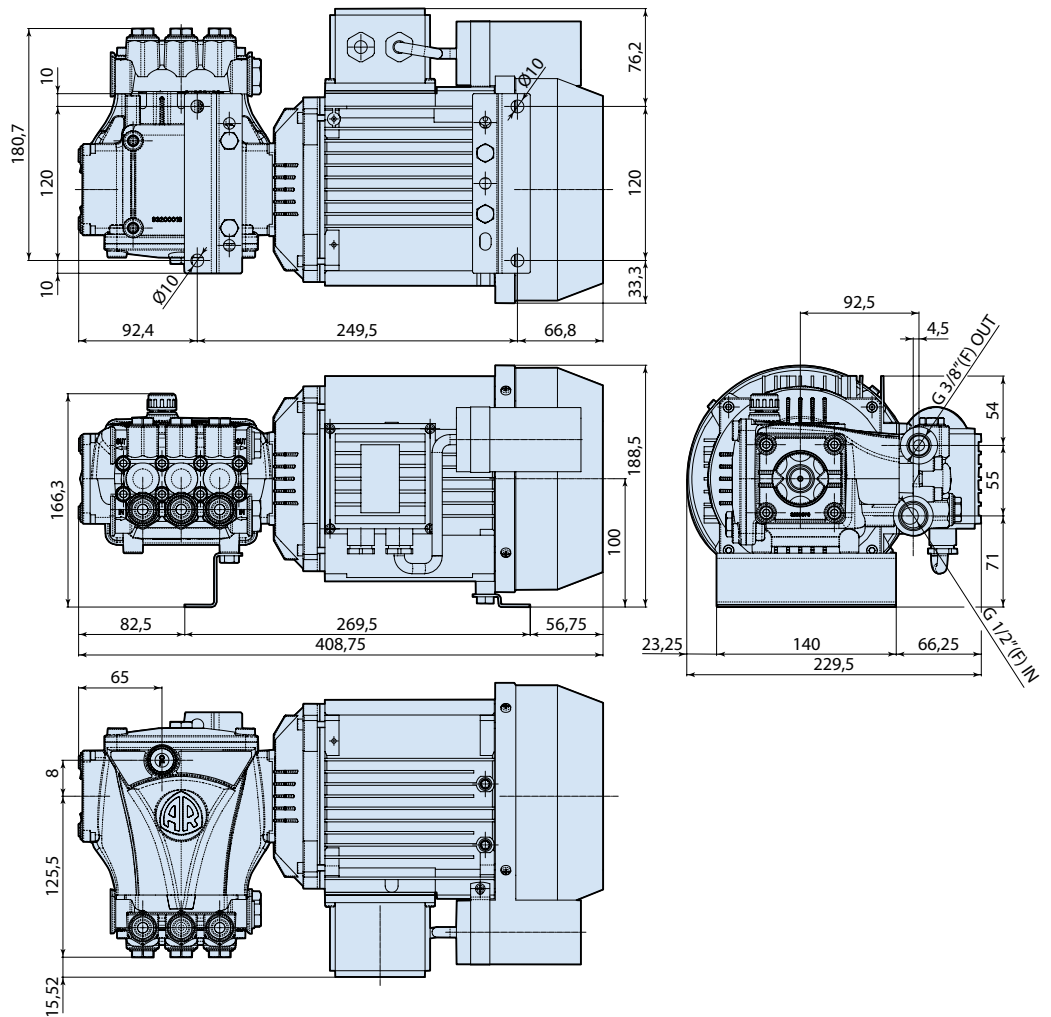
HPE 1450 rpm

Pump - Pompa	Cod 1 ~	Cod 3 ~	Output Portata		Pressure Pressione		Power Potenza		RPM	1 ~	3 ~	Weight	Price 1 ~	Price 3 ~
			l/min	gpm	bar	psi	hp	kw		50 Hz	50 Hz		€	€
HPE 8.12 A	8607	—	8	2.11	120	1740	2.5	1,8	1450	230	-	19,2	593,00	-
HPE 8.12 A	—	8608	8	2.11	120	1740	2.5	1,8	1450	-	230/400	19,2	-	613,00
• HPE 8.14	—	8598	8	2.11	140	2000	3	2,2	1450	-	230/400	22,5	-	677,00
HPE 9.11	8509	—	9	2.37	110	1600	2.5	1,8	1450	230	-	19,2	643,00	-
HPE 9.11	—	8510	9	2.37	110	1600	2.5	1,8	1450	-	230/400	19,2	-	630,00
• HPE 9.14	—	8502	9	2.37	140	2000	3	2,2	1450	-	230/400	22,5	-	677,00
HPE 10.10	8619	—	10	2.64	100	1450	2.5	1,8	1450	230	-	19,2	643,00	-
HPE 10.10	—	8620	10	2.64	100	1450	2.5	1,8	1450	-	230/400	21,5	-	630,00
HPE 10.12 A	—	8622	10	2.64	120	1740	3	2,2	1450	-	230/400	21,5	-	646,00
HPE 11.09	8506	—	11	2.90	90	1300	2.5	1,8	1450	230	-	19,2	643,00	-
HPE 11.09	—	8508	11	2.90	90	1300	2.5	1,8	1450	-	230/400	21,5	-	630,00
HPE 11.11	—	8552	11	2.90	110	1600	3	2,2	1450	-	230/400	21,5	-	646,00
HPE 13.10	—	8548	13	3.43	100	1450	3	2,2	1450	-	230/400	21,5	-	646,00

HPE 2800 - 1750 rpm

Pump - Pompa	Cod 1 ~	Cod 3 ~	Output Portata		Pressure Pressione		Power Potenza		RPM	1 ~	3 ~	Weight	Price 1 ~	Price 3 ~
			l/min	gpm	bar	psi	hp	kw		N°giri/1'	volt		volt	€
HPE 8.12 A	8593	—	8	2.11	120	1740	2.5	1,8	2800	230 ^a	-	19,2	570,00	-
• HPE 8.14	8549	—	8	2.11	140	2000	3	2,2	2800	230 ^a	-	22	685,00	-
HPE 10.10	8621	—	10	2.64	100	1450	2.5	1,8	2800	230 ^a	-	19,2	570,00	-
HPE 10.12 A	8623	—	10	2.64	120	1740	3	2,2	2800	230 ^a	-	21,5	600,00	-
HPE 11.09	8511	—	11	2.90	90	1300	2.5	1,8	2800	230 ^a	-	19,2	570,00	-
HPE 11.11	8594	—	11	2.90	110	1600	3	2,2	2800	230 ^a	-	21,5	600,00	-
• HPE 11.14	—	8595	11	2.90	140	2000	4	3	2800	-	230/400 ^c	22	-	700,00
HPE 13.09	8591	—	13	3.43	90	1300	3	2,2	2800	230 ^a	-	21,5	600,00	-
HPE 13.12	—	8597	13	3.43	120	1740	4	3	2800	-	230/400 ^c	22	-	700,00
HPE 2 G15	8522	—	8	2.11	100	1450	2	1,5	1750	115 ^b	-	21,5	570,00	-
HPE 2 G15	21849	—	8	2.11	100	1450	2	1,5	1750	230 ^b	-	21,5	570,00	-
• HPE 2 G18	8525	—	8	2.11	120	1740	2.5	1,8	1750	230 ^b	-	21,5	685,00	-
HPE 3 G13	8534	—	11,4	3	90	1300	2.5	1,8	1750	230 ^b	-	22	570,00	-
HPE 3.5 G10	8678	—	13,1	3.5	70	1000	2.5	1,8	1750	230 ^b	-	21,5	600,00	-

a) 1~ 50 Hz • b) 1~ 60 Hz • c) 3~ 50 Hz



3208508

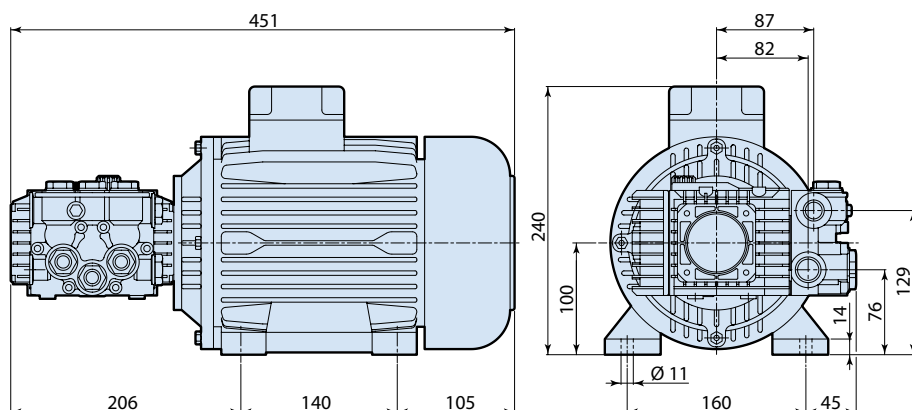
HRC 1450 rpm

Pump - Pompa	Cod 1 ~	Cod 3 ~	Output Portata		Pressure Pressione		Power Potenza		RPM	1 ~	3 ~	Weight	Price 1 ~	Price 3 ~
			l/min	gpm	bar	psi	hp	kw		N°giri/1'	volt		volt	Kg
HRC 8.12	23446	-	8	2.11	120	1740	2.5	1.8	1450	230	-	19,2	574,00	-
HRC 8.14	-	23447	8	2.11	140	2000	3	2,2	1450	-	230/400	22	-	639,00
HRC 9.11	23448	-	9	2.37	110	1600	2.5	1,8	1450	230	-	19,2	574,00	-
HRC 9.14	-	23449	9	2.37	140	2000	3	2,2	1450	-	230/400	22,5	-	639,00
HRC 10.10	23450	-	10	2.64	100	1450	2.5	1,8	1450	230	-	19,2	574,00	-
HRC 11.11	-	23451	11	2.90	110	1600	3	2,2	1450	-	230/400	21,5	-	639,00
HRC 13.10	-	23452	13	3.43	100	1450	3	2,2	1450	-	230/400	21,5	-	639,00

132 SERIES



1328506



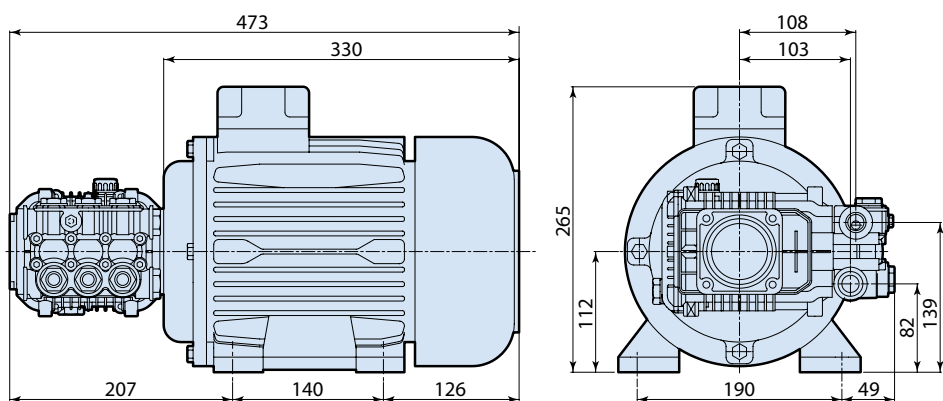
HXT 1450 rpm

Pump - Pompa	Cod 1 ~	Cod 3 ~	Output Portata		Pressure Pressione		Power Potenza		RPM	1 ~	3 ~	Weight	Price 1 ~	Price 3 ~
			l/min	gpm	bar	psi	hp	kw		N°giri/1'	volt		volt	Kg
HXT 8.14 EM	7146	-	8	2.11	140	2000	3	2,2	1450	230	-	28	904,00	-
HXT 11.11 EM	7148	-	11	2.90	110	1600	3	2,2	1450	230	230/400	28	870,00	-
HXT 11.14 ET	-	7154	11	2.90	140	2000	4	3	1450	-	230/400	30	-	888,00
HXT 13.12 ET	-	7155	13	3.43	120	1740	4	3	1450	-	230/400	30	-	888,00

178 SERIES



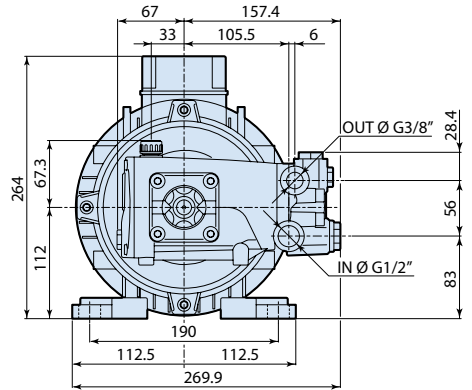
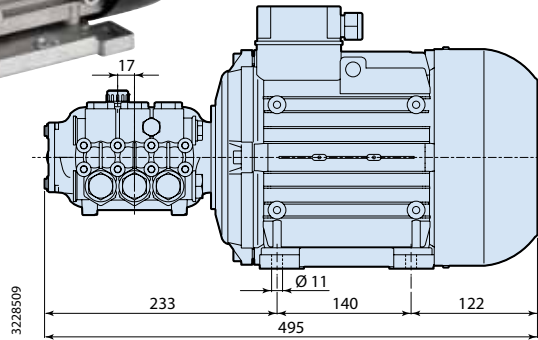
1788506



HXM 1450 rpm

Pump - Pompa	Cod.	Output Portata		Pressure Pressione		Power Potenza		RPM	3 ~ 50 H	Weight	Price
		l/min	gpm	bar	psi	hp	kw				
HXM 13.17	20196	13	3.43	170	2500	5.5	4	1450	230/400	30	848,00
HSXM 13.20	21370	13	3.43	200	2900	7.5	5,5	1450	230/400	38	927,00
HXM 15.15	20197	15	3.96	150	2200	5.5	4	1450	230/400	30	848,00
HSXM 15.20	21371	15	3.96	200	2900	7.5	5,5	1450	230/400	38	927,00

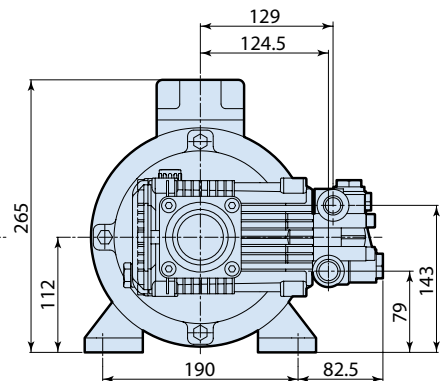
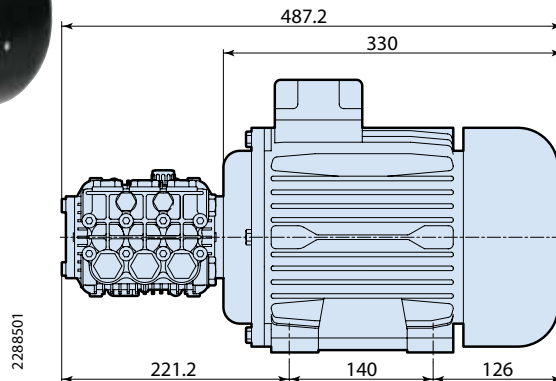
322 SERIES



HRR 1450 rpm

Pump - Pompa	Cod.	Output - Portata		Pressure - Pressione		Power - Potenza		RPM	3 ~ 50 Hz	Weight	Price
		l/min	gpm	bar	psi	hp	kw				
HRR 15.15 ET	23978	15	3,96	150	2200	5,5	4	1450	230/400	24	859,00
HRR 15.20 ET	23979	15	3,96	200	2900	7,5	5,5	1450	230/400	33	939,00
HRR 18.16 ET	23980	18	4,75	160	2300	7,5	5,5	1450	230/400	33	939,00

228 SERIES



HRK 1450 rpm

Pump - Pompa	Cod.	Output - Portata		Pressure - Pressione		Power - Potenza		RPM	3 ~ 50 Hz	Weight	Price
		l/min	gpm	bar	psi	hp	kw				
HRK 13.20 H	20859	13	3.43	200	2900	7.5	5,5	1450	230/400	41	997,00
HRK 14.16	20860	14	3.70	160	2300	5.5	4	1450	230/400	32	905,00
HRK 15.15	20861	15	3.96	150	2200	5.5	4	1450	230/400	32	905,00
HRK 15.20 H	20862	15	3.96	200	2900	7.5	5,5	1450	230/400	41	997,00
HRK 15.25 H	20863	15	3.96	250	3600	10	7,5	1450	230/400	56	1.367,00
HRK 18.16 H	20865	18	4.75	160	2300	7.5	5,5	1450	230/400	41	997,00
HRK 21.10	20866	21	5.55	100	1450	5.5	4	1450	230/400	32	905,00
HRK 21.15 H	20867	21	5.55	150	2200	7.5	5,5	1450	230/400	41	997,00
HRK 21.20 H	20868	20	5.55	190	2600	10	7,5	1450	230/400	56	1.367,00

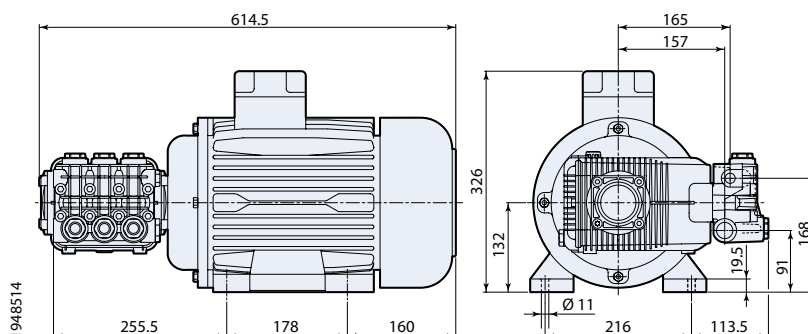
298 S E R I E S



HRW 1450 rpm

Pump - Pompa	Cod.	Output - Portata		Pressure - Pressione		Power - Potenza		RPM	3 ~ 50 Hz	Weight	Price
		l/min	gpm	bar	psi	hp	kw				
HRW 15.15 ET	23974	15	3,96	150	2200	5,5	4	1450	230/400	30	1.096,00
HRW 15.20H ET	23975	15	3,96	200	2900	7,5	5,5	1450	230/400	40	1.178,00
HRW 21.15H ET	23976	21	5,50	150	2200	7,5	5,5	1450	230/400	40	1.178,00
HRW 21.20H ET	23977	21	5,50	200	2900	10	7,5	1450	230/400	50	1.746,00

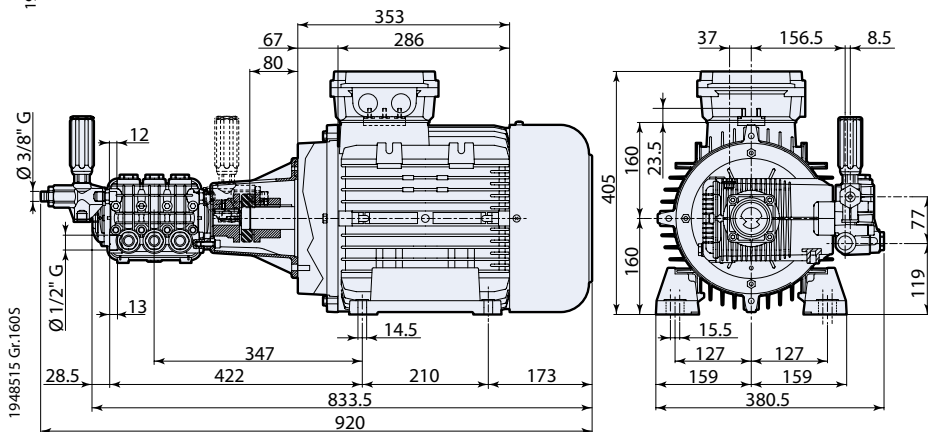
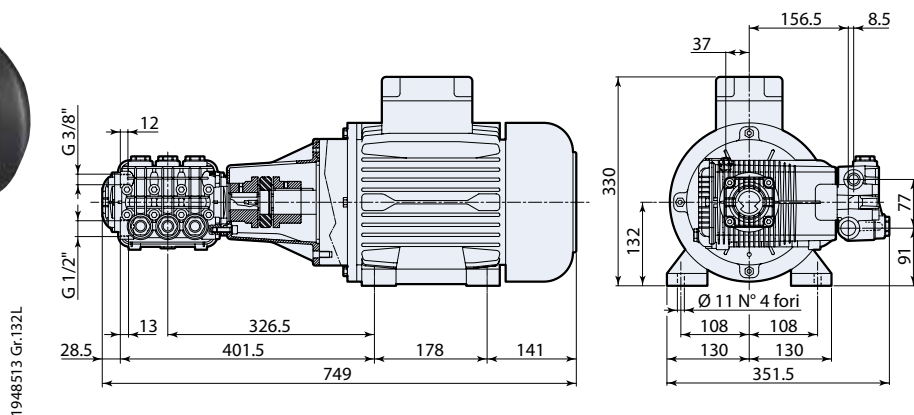
194 S E R I E S



HXW - HXWL ET 1450 rpm - HXWA ET 1750 rpm

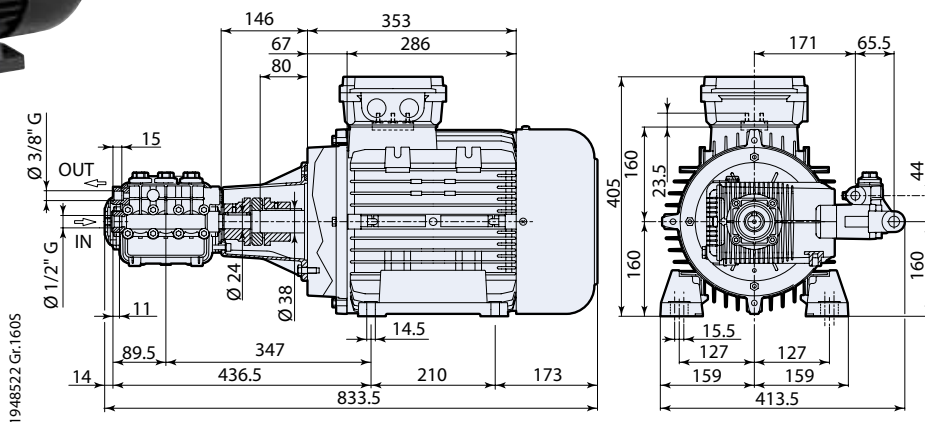
Pump - Pompa	Cod.	Output - Portata		Pressure - Pressione		Power - Potenza		RPM	3 ~	Weight	Price
		l/min	gpm	bar	psi	hp	kw				
HXW 15.15 ET	20871	15	3.96	150	2200	5.5	4	1450	230/400 ^c	33	1.228,00
HXW 15.20 ET	20872	15	3.96	200	2900	7.5	5,5	1450	230/400 ^c	39	1.310,00
HXW 21.20 ET	20224	21	5.55	200	2900	10	7,5	1450	230/400 ^c	63	1.928,00
HXW 26.15 ET	20225	26	6.87	150	2200	10	7,5	1450	230/400 ^c	63	1.993,00
HXW 30.10 ET	20227	30	7.92	100	1450	7.5	5,5	1450	230/400 ^c	39	1.476,00
HXW 30.15 ET	20228	30	7.92	150	2200	10	7,5	1450	230/400 ^c	63	2.073,00
HXW 30.20 ET	20229	30	7.92	200	2900	15	11	1450	230/400 ^c	70	2.622,00
HXWL 42.07 ET	21183	42	11.09	70	1000	7.5	5,5	1450	230/400 ^c	39	1.454,00
HXWL 42.10 ET	21184	42	11.09	100	1450	10	7,5	1450	230/400 ^c	63	2.113,00
HXWA 4G20 ET	20782	15,1	4	140	2000	5.5	4	1750	230/400 ^d	33	1.405,00
HXWA 4G30 ET	20783	15,1	4	205	3000	7.5	5,5	1750	230/400 ^d	39	1.452,00

c) 3~ 50 Hz • d) 3~ 60 Hz



HSXW 1450 rpm

Pump - Pompa	Cod.	Output - Portata		Pressure - Pressione		Power - Potenza		RPM	3 ~ 50 Hz	Weight	Price
		l/min	gpm	bar	psi	hp	kw				
HSXW 15.35	21066	15,1	4	350	5100	15	11	1450	230/400	75	2.977,00
HSXW 21.35	22995	21	5.55	350	5100	20	15	1450	400/690	115	3.085,00



HSHP 1450 rpm

Pump - Pompa	Cod.	Output - Portata		Pressure - Pressione		Power - Potenza		RPM	3 ~ 50 Hz	Weight	Price
		l/min	gpm	bar	psi	hp	kw				
HSHP 15.50	22082	15	3.96	500	7250	20	15	1450	400/690	115	3.312,00