

APLIKACIJE

Univerzalne pumpe za privatne ili opće vodoopskrbne sustave, za čiste ne-eksplozivne tekućine bez čvrstih ili abrazivnih sastojaka, za poljoprivredna navodnjavanja i sportske programe, za civilne i industrijske svrhe, za sisteme u kotlovnica i sustavima kondenzata, u visokotlačnim postrojenjima autopraonica i dr.

TEHN. KARAKTERISTIKE

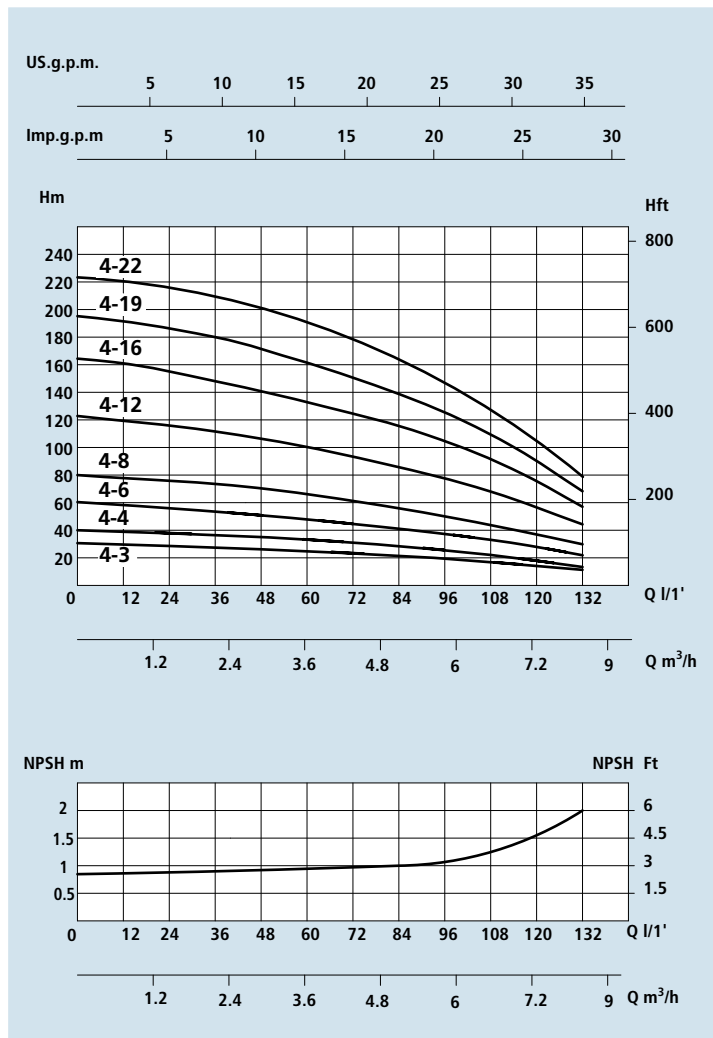
- Temp. tekućine od 0 °C do 110 °C
- Temp. okoline do 40 °C
- Max. radni tlak 25 bara

MOTOR

- El. standardni (n= 2900 o/min)
- Klasa izolacije F
- Zaštita IP 55

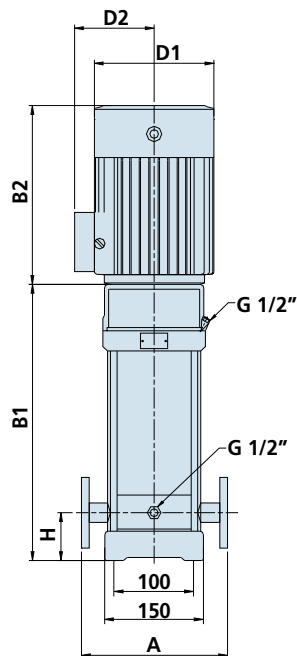
MATERIJALI

- Uisno kućište : inox
- Tlačno kućište : inox
- Rotor pumpe (lopatica) : inox
- Difuzor : inox
- Plast : inox
- Osovina : inox
- Prirubnice : inox
- Mehanička brtva: silicij / grafit

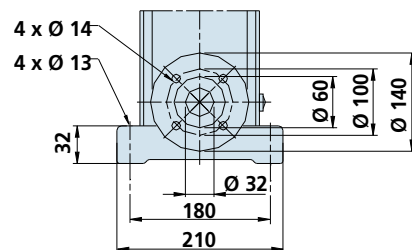


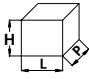
PERFORMANSE

| TIP PUMPE | | SNAGA NOMINALNA | | AMPERA | | Q = KAPACITET (PROTOK) | | | | | | | | | |
|-----------|---------------|-----------------|------|-----------|----------|--------------------------------|----------|-------|-----|-----|-----|-----|-----|-----|-----|
| Monofazne | Trofazne | p2 | | Monofazne | Trofazne | m³/h | 1,5 | 2 | 3 | 4 | 5 | 6 | 7 | 8 | 9 |
| | | HP | kW | | | 1 x 230V | 3 x 400V | lt/1' | 25 | 33 | 50 | 66 | 83 | 100 | 116 |
| 230V-50Hz | 230/400V-50Hz | | | | | <i>Visina dobave u metrima</i> | | | | | | | | | |
| VSM 4-3 | VS 4-3 | 0,75 | 0,55 | 3,5 | 1,3 | H (m) | 28 | 27 | 26 | 24 | 20 | 18 | 13 | 10 | |
| VSM 4-4 | VS 4-4 | 1 | 0,75 | 4,6 | 1,6 | | 38 | 36 | 34 | 32 | 27 | 24 | 19 | 13 | |
| VSM 4-6 | VS 4-6 | 1,5 | 1,1 | 6,7 | 2,5 | | 56 | 54 | 52 | 48 | 41 | 37 | 28 | 20 | |
| VSM 4-8 | VS 4-8 | 2 | 1,5 | 8,7 | 3,2 | | 74 | 72 | 70 | 64 | 55 | 50 | 38 | 27 | |
| VSM 4-12 | VS 4-12 | 3 | 2,2 | 12,8 | 4,5 | | 114 | 108 | 104 | 95 | 85 | 75 | 58 | 41 | |
| | VS 4-16 | 4 | 3 | | 5,8 | | 152 | 144 | 140 | 129 | 115 | 101 | 78 | 55 | |
| | VS 4-19 | 5,5 | 4 | | 7,6 | | 183 | 171 | 168 | 153 | 137 | 122 | 93 | 67 | |
| | VS 4-22 | 5,5 | 4 | | 7,6 | | 211 | 200 | 192 | 178 | 160 | 138 | 108 | 79 | |



DN 32 1" 1/4



| TIP PUMPE | | DIMENZIJE mm | | | | | | | | DIMENZIJE mm  | | | MASA |
|-----------|----------|--------------|-----|-----|-----|---------|-----|-----|--------------|--|------|-----|------|
| Monofazne | Trofazne | A | H - | B1 | B2 | B1 + B2 | D1 | D2 | Prirubnica | P | L | H | Kg |
| VSM 4-3 | VS 4-3 | 250 | 75 | 303 | 210 | 513 | 148 | 148 | DN 32 1" 1/4 | 300 | 750 | 300 | 35 - |
| VSM 4-4 | VS 4-4 | 250 | 75 | 340 | 245 | 585 | 170 | 142 | DN 32 1" 1/4 | 300 | 750 | 300 | 39 - |
| VSM 4-6 | VS 4-6 | 250 | 75 | 394 | 245 | 639 | 170 | 142 | DN 32 1" 1/4 | 300 | 750 | 300 | 41 - |
| VSM 4-8 | VS 4-8 | 250 | 75 | 458 | 290 | 748 | 190 | 155 | DN 32 1" 1/4 | 350 | 950 | 350 | 51 - |
| VSM 4-12 | VS 4-12 | 250 | 75 | 566 | 290 | 856 | 190 | 155 | DN 32 1" 1/4 | 350 | 950 | 350 | 61 |
| | VS 4-16 | 250 | 75 | 684 | 315 | 999 | 197 | 165 | DN 32 1" 1/4 | 350 | 1100 | 350 | 65 |
| | VS 4-19 | 250 | 75 | 765 | 335 | 1100 | 230 | 188 | DN 32 1" 1/4 | 400 | 1200 | 350 | 81 |
| | VS 4-22 | 250 | 75 | 846 | 335 | 1181 | 230 | 188 | DN 32 1" 1/4 | 400 | 1200 | 350 | 82 |