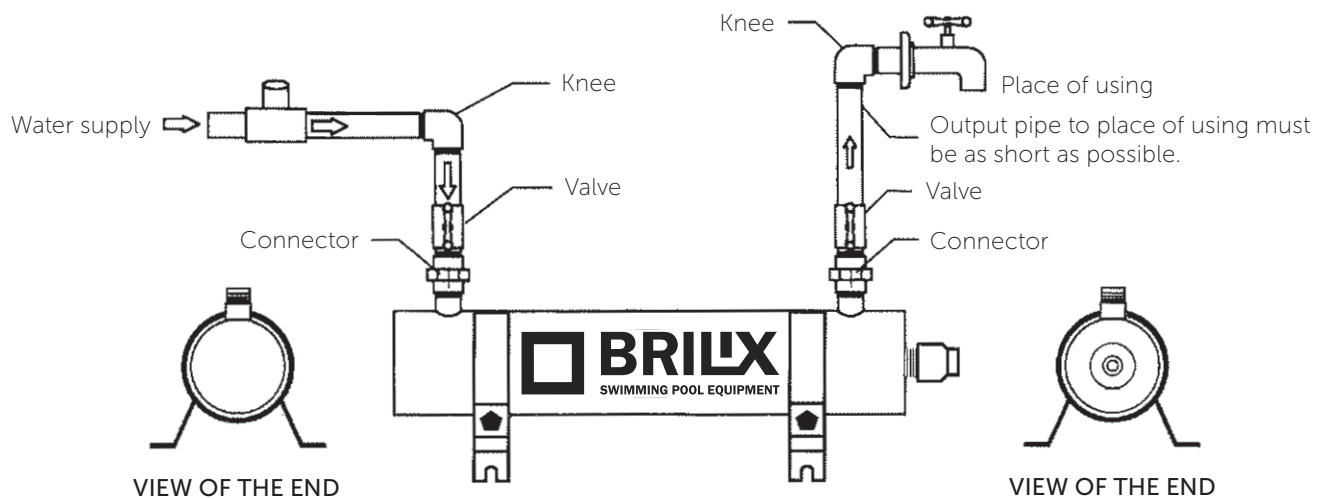
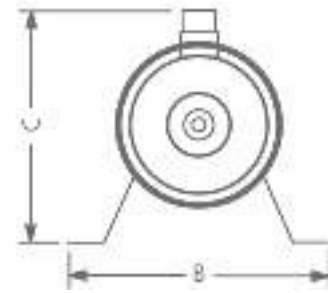




UV lampe emitiraju UV-C (ultraljubičasto) zračenje valne duljine 253,7 nm koja ima bakteriocidne učinke (ubija bakterije). SP UV proizvod pruža čistu i svježvu vodu na jednostavan, učinkovit način koji poštuje okoliš. Voda je pumpana kroz UV jedinicu te je izložena UV-C zračenju s valnom duljinom od 253.7 nm koja emitira posebna svjetiljka. Ovaj uređaj ubija bakterije, viruse i druge primitivne organizme i sprečava ih da se reproduciraju. Zbog duljine jedinice, voda je dulje vrijeme izložena većoj dozi zračenja. Unutrašnjost otporna na koroziju također reflektira UV-C zračenje i time povećava učinkovitost uređaja do 35%. Unutrašnjost izrađena od nehrđajućeg čelika elektrolitički se pročišćava i sprečava nečistoće da se lijepe kako bih se održala maksimalna refleksija. S proizvodom SP UV vaša će voda biti učinkovito i sigurno dezinficirana, pružajući vam izvrsnu kvalitetu vode. Voda je učinkovito i sigurno dezinficirana te je Vaš bazen zaštićen od patogenih organizama , smanjuje formiranje plijesni, bakterija i algi . Može smanjiti sadržaj klora i drugih kemikalija za 80% .Sprječava stvaranje mirisa klora i nadraženost kože i očiju (crvene oči). Proces je ekološki prihvatljiv u usporedbi s tradicionalnim metodama . Izmjena UV lampe se preporuča nakon cca 8000-9000 sati ili 12 mjeseci intenzivnog rada .

Model	SP - I	SP - II	SP - III	SP - IV	SP - V
A (mm)	276	786	786	786	786
B (mm)	175	175	175	175	175
C (mm)	155	155	155	155	155
D (mm)	420	930	930	930	930
Promjer cijevi	1 1/2 "	1 1/2"	1 1/2 "	1 1/2"	1 1/2 "
Napon	230V	230V	230V	230V	230V
Ulazna snaga	16 W	40 W	65 W	85 W	2x85 W
Brzina protoka	6 m3/h	9 m3/h	12 m3/h	15 m3/h	20 m3/h
Maksimalni tlak	3 bar	3 bar	3 bar	3 bar	3 bar
Za bazene do	15 m3	35 m3	55 m3	70 m3	140 m3

Ne preporučujemo korištenje UV lampi u bazenima s morskom vodom.

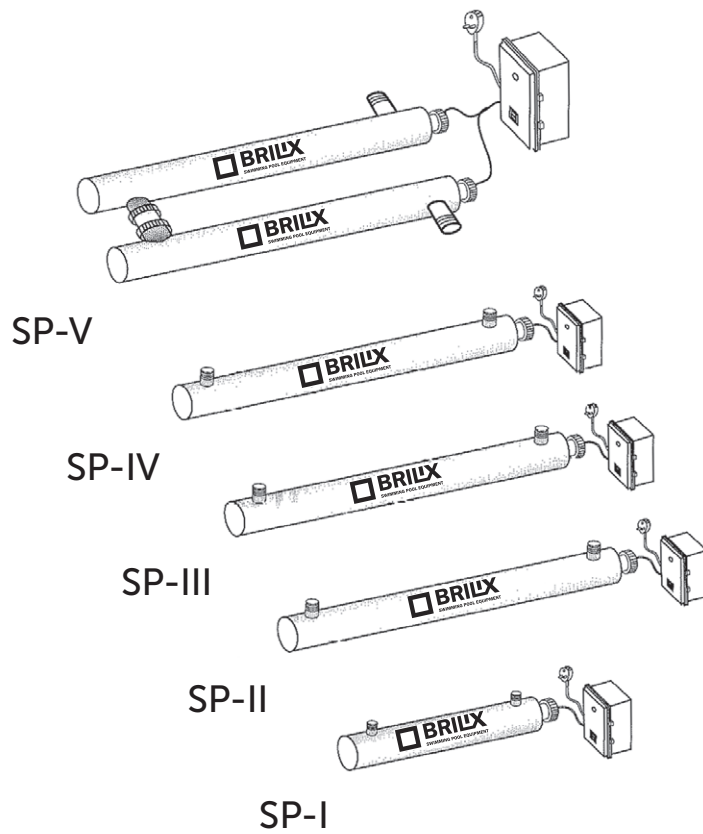


Notes:

1. Install the UV lamp on the accessible and properly illuminated place to facilitate inspections and maintenance.
2. Do not let the UV lamp get frozen.
3. Maximum recommended temperature of the environment is 32,2°C.
4. Standard supplies provided 230V/50Hz.
5. Maximum recommended operating pressure is 5,5 bars.

WATER TREATMENT

UV lamp - SP



1.

Introduction

Before the first use, please read instructions carefully for this installation. In order to use this device safely, follow the security recommendations.

2.

Operation

The UV lamps produce UV-C (ultra-violet) radiation of a wave length of 253,7 nm that has bactericidal effects. The SP UV product provides clean, fresh and clear water through a simple and efficient method, and with regard to the environment. The water is pumped through the UV unit. The water inside is exposed to UV-C radiation of the wave length of 253,7nm produced by a special lamp. This installation kills bacteria, viruses and other primitive organisms and prevents their reproduction. In consequence of the length of the unit the water is exposed to a bigger amount of radiation for a prolonged period. Besides, the stainless interior reflects the UV-C radiation and increase the efficiency of the installation of 35%. The stainless interior is refined by the electrolyse process and thus prevent the dirt from sticking to the surface and keep the maximal reflectance. With the SP UV product your water will be efficiently and safely disinfected and you will obtain the high-quality water.

Advantages of the water modification by the UV lamps

- Obtaining fresh, clean and clear water
- Efficient and safe water disinfection
- Your pool will be protected against pathogenic organism
- Minimizing of mould, bacteria and algae creation
- Can reduce the percentage of chlorine and other chemicals by up to 80%
- Prevent the creation of a chlorine smell and skin and eyes irritation (red eyes)
- Procedure is respectful of the environment in comparison with traditional methods

SP UV characteristics

- Thanks to the inner reflection the efficiency is up to 35% higher
- Stainless reflection interior refined by an electrochemical way that minimize dirt sedimentation
- UV lamp with 8,000 hours lifetime
- Easy installation, maintenance and cleaning

Direction for use

3.

1. This installation is able to kill harmful bacteria and mold in the pool and provides thus a healthy environment.
2. If the ultra-violet radiation of the wave of length 253,7 nm operates for a short term, bacteria and germs will be destroyed in the water.
3. This installation does not belong to the water pump. Buy it separately.
4. Connect the UV lamp to the pipe circuit of the displacement behind the filtration container.
5. Connect the admission pipe to the water pump displacement.
6. Connect the admission pipe to another filter or to the pool and fix it. After checking the pipe and the connection piece, the water circulation can be turned on.
7. After turning the water circulation on, incline the lateral surface of this installation and bleed the pipe or the lateral surface. Check after several minutes if the water circulation operates in an appropriate way.
8. Fix the grounded cable to the tightening bolt of the holder (8)!!!
9. According to public order no. 50/1978 sb. only authorized person with an appropriate qualification can execute mounting and mending.
10. Do not insert any material (paper, rubber, etc.) between the holder (8) and the body of the UV-lamp that would obstruct from earthing.
11. The UV lamp will operate while turning the electric supply on.

Warning

4.

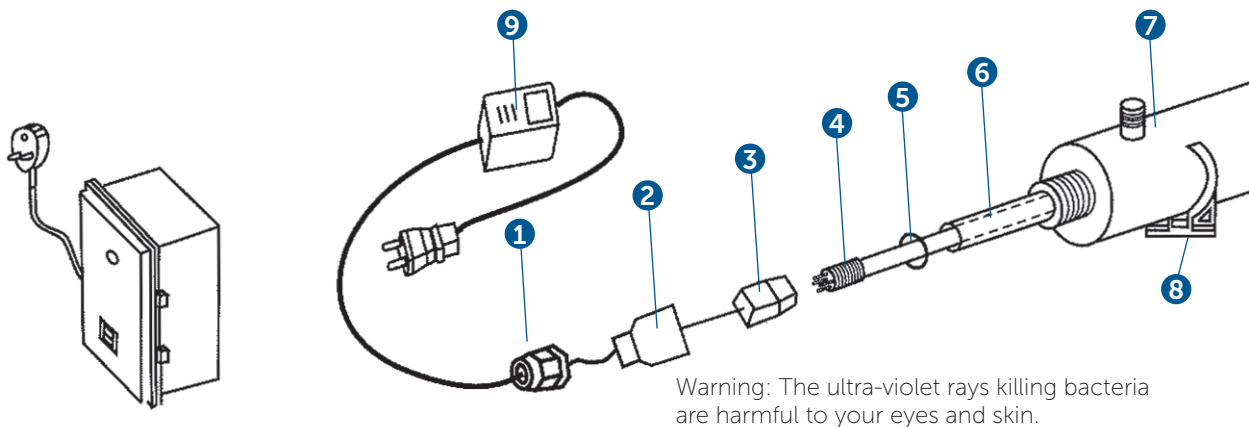
1. Place the UV lamp in such a way that it is not immersed in the water. It is not possible to use this installation under the water.
2. The electric supply of the UV lamp must not be turned on before the water start circulation.
3. Place the UV lamp on the stable and safe place because the UV light tube is made from the silica glass and can be easily broken.
4. All components must be installed before switching on the electric supply.
5. If the UV light tube seems to be broken or the lateral surface appears broken, do not use the installation.
6. Electric supply must be operated only by a qualified electrician.
7. Make sure that use of the voltage and frequency is in conformity with specifications on the tag of the UV lamp.
8. It is necessary to follow local installation regulations while installing the mechanism.
9. It is forbidden to pull the connector cable. Protect the connector cable against heat, grease and sharp objects.
10. Make sure that the pressure effecting on the lateral surface is not higher than 5,5 bar.
11. Do not place any stop valves between the lateral surface and the connector pipe of the pool. If it be to the contrary, it would influence the hydraulic pressure effecting the lateral surface.
12. If the frost is supposed to come, remove the UV installation.
13. Do not expose the UV lamp on the direct sun.
14. The dirt on the silica glass tube will effect the efficiency of the installation, do clean the silica glass tube when necessary.
15. To ensure the efficiency of the installation, it is necessary to exchange the UV light tube after 8,000 hours of the use.
16. If the lateral surface is blocked by sand or dirt, the silica glass tube can be damaged. Do place a sieve in the water pump suction.
17. The UV lamp is harmful to your eyes and skin. Do not look directly at the UV lamp and do not make any contact with your skin.
18. While installing or mending this installation, switch off the electric supply.
19. This installation produces dangerous radiation. The direct contact might be dangerous for eyes and skin. Do check the UV lamp through transparent connections of the unit.
20. Do not use the devices in salt water

Type	Voltage	Power	Maximum flow	Maximum pressure
SP-I	230V	16W	6000 l/h	5,5 bars
SP-II	230V	40W	9000 l/h	5,5 bars
SP-III	230V	65-72W	12000 l/h	5,5 bars
SP-IV	230V	85W	15000 l/h	5,5 bars
SP-V	230V	2x85W	20000 l/h	5,5 bars

5.

Mounting

Warning: The UV lamp and the silica glass tube can be easily damaged. Be careful while detaching the lamp and silica glass tube or while putting these components back!



6.

List of components:

Item	Product Description	Product code	Item	Product Description	Product code
1	waterproof brushing	BXNDUV002	6	silica glass tube SP-II-SPV	BXNDUV004
2	aluminium nut			silica glass tube SP-I	BXNDUV016
3	lamp holder and supply lead of the lamp		7	chest	
4	ultra-violet lamp killing bacteria (SP-I)	BXNDUV017	8	holder	
	ultra-violet lamp killing bacteria (SP-II)	BXNDUV018	9	feeder (SP-I)	BXNDUV020
	ultra-violet lamp killing bacteria (SP-III)	BXNDUV005		feeder (SP-II)	BXNDUV021
	ultra-violet lamp killing bacteria (SP-IV-V)	BXNDUV019		feeder (SP-III)	BXNDUV022
5	rubber O-ring	BXNDUV003		feeder (SP-IV)	BXNDUV006
				feeder (SP-V)	BXNDUV023

The UV lamp can be connected only to power supply which is protected by current protektor with residual current 0,03A and current breaker 2A , B specification.

There is a ON/OFF button on the power sources. I the UV light iis ON the button lights green. There are also 2 indicartor lamps: green - lights if the UV lamps is ON, and red – lights if the bulb of the UV lamp needs to be replaced (in this case you can also hear whistling).

Recommendations for maintenance

7.

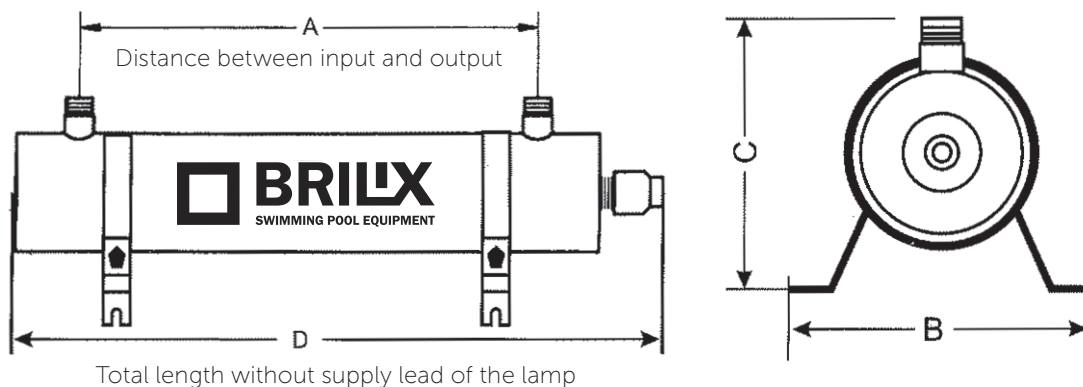
For the correct function and maintenance of the sterilizer, the user must make following service:

I. Cleaning or exchange of the silica glass tube:

1. It is necessary to clean the silica glass tube every three to six months. Clean it by the use of alcohol or spirit or a detergent without any abrasive particles.
2. The silica glass tube has to be changed every 24 months.

II. The exchange of the UV lamp is recommended every 8,000 to 9,000 hours of the operation (approximately 12 months of permanent running).

1. Remove the waterproof brushing (1) and unscrew the nut (2).
2. Run out carefully the lamp (4) about 5cm from the chest (7).
3. While holding the end of the lamp(4), remove carefully the lamp socket (3) from the exposed end.
4. Pull out carefully the lamp (4) from the chest (7).
5. Remove carefully the O-ring from both ends of the silica glass tube (6).
6. Remove carefully the silica glass tube (6).
7. Connect the grounded cable (10) on the holder (8).



Note: Line connector and supply lead of the lamp cut out do to incomprehensibility.

Typ	A	B	C	D	SIZE OF INPUT AND OUTPUT
SP-I	276	175	155	420	1 1/2"
SP-II	786	175	155	930	1 1/2"
SP-III	786	175	155	930	1 1/2"
SP-IV	786	175	155	930	1 1/2"
SP-V	786	175	155	930	1 1/2"

