

PVC fittings – valves

PVC fittings

PVC pipes & hoses

glues & cleaners

Ball valve



Cat. ID	Description - Ø mm	kg
313010	B Valve - diameter 50 mm - double union	0,70
313013	B Valve - diameter 63 mm - double union	1,14

Ball valve EXTRA



Cat. ID	Description - Ø mm	kg
313015	B Valve - diameter 20 mm - double union Extra	0,18
313016	B Valve - diameter 25 mm - double union Extra	0,30
313017	B Valve - diameter 32 mm - double union Extra	0,46
313018	B Valve - diameter 40 mm - double union Extra	0,69
313012	B Valve - diameter 50 mm - double union Extra	0,96
313014	B Valve - diameter 63 mm - double union Extra	1,61
313011	B Valve - diameter 75 mm - double union Extra	2,17
313019	B Valve - diameter 90 mm - double union Extra	5,18
313450	B Valve - diameter 110 mm - double union Extra	7,38

Ball valve PT



50 mm ITL



63 & 75 mm PT

Cat. ID	Description - Ø mm	kg
317773	B Ball valve double union plain/plain 40 mm - PT	0,6
317774	B Ball valve double union plain/plain 50 mm - ITL	0,7
317775	B Ball valve double union plain/plain 63 mm - PT	1,4
317776	B Ball valve double union plain/plain 75 mm - PT	2,5
317778	B Ball valve double union plain/plain 50 mm	0,75

Check valve



Cat. ID	Description - Ø mm	kg
313020	B Valve - diameter 50 mm - check valve	0,75
313021	B Valve - diameter 63 mm - check valve	1,23

Check valve - spring



Cat. ID	Description - Ø mm	kg	RRP (EUR)
313022	B Valve - diameter 50 mm - check valve - spring	0,70	12,10
313023	B Valve - diameter 63 mm - check valve - spring	1,14	18,20

Check valve PT - spring



Cat. ID	Description - Ø mm	kg	RRP (EUR)
317784	B Valve - check valve plain/plain 50 mm - PT	0,6	12,30
317785	B Valve - check valve plain/plain 63 mm - PT	1,3	18,20
317786	B Valve - check valve plain/plain 75 mm - PT	2,4	38,90

PVC union - 3 pieces

Cat. ID	Description - Ø mm	kg
313310	B Union - 3 pieces - plain/plain 50 mm	0,24
313311	B Union - 3 pieces - plain/plain 63 mm	0,43
313312	B Union - 3 pieces - plain/plain 75 mm	0,76



PVC Adapter

Cat. ID	Description - Ø mm	kg
313004	B Adapter plain/male thread 20 x 1/2"	0,02
313005	B Adapter plain/male thread 25 x 3/4"	0,03
313006	B Adapter plain/male thread 32 x 1"	0,05
313007	B Adapter plain/male thread 40 x 1 1/4"	0,07
313001	B Adapter plain/male thread 50 x 1 1/2"	0,11
313002	B Adapter plain/male thread 63 x 2"	0,13
313003	B Adapter plain/male thread 75 x 2 1/2"	0,16
313008	B Adapter plain/male thread 90 x 3"	0,44
313009	B Adapter plain/male thread 110 x 4"	0,73



PVC Adapter plain/male thread M/F

Cat. ID	Description - Ø mm	kg
313440	B Adapter plain/male thread M/F 32 x 25 x 3/4 "	0,03
313441	B Adapter plain/male thread M/F 50 x 40 x 1"	0,08
313442	B Adapter plain/male thread M/F 50 x 40 x 1 1/4 "	0,08



PVC Socket plain/female thread

Cat. ID	Description - Ø mm	kg
313303	B Socket plain/female thread 20 x 1/2 "	0,02
313304	B Socket plain/female thread 25 x 3/4 "	0,03
313305	B Socket plain/female thread 32 x 1"	0,05
313306	B Socket plain/female thread 40 x 1 1/4 "	0,07
313300	B Socket plain/female thread 50 x 1 1/2 "	0,12
313301	B Socket plain/female thread 63 x 2 "	0,20
313302	B Socket plain/female thread 75 x 2 1/2 "	0,26
313307	B Socket plain/female thread 90 x 3 "	0,48
313308	B Socket plain/female thread 110 x 4 "	0,68



PVC Reduction



Cat. ID		Description - Ø mm	kg
313200	B	Reduction plain/plain 25 × 20 mm	0,02
313101	B	Reduction plain/plain 32 × 20 mm	0,03
313102	B	Reduction plain/plain 32 × 25 mm	0,03
313103	B	Reduction plain/plain 40 × 20 mm	0,05
313104	B	Reduction plain/plain 40 × 25 mm	0,05
313105	B	Reduction plain/plain 40 × 32 mm	0,06
313106	B	Reduction plain/plain 50 × 20 mm	0,08
313107	B	Reduction plain/plain 50 × 25 mm	0,08
313108	B	Reduction plain/plain 50 × 32 mm	0,09
313109	B	Reduction plain/plain 50 × 40 mm	0,10
313088	B	Reduction plain/plain 63 × 25 mm	0,13
313089	B	Reduction plain/plain 63 × 32 mm	0,13
313100	B	Reduction plain/plain 63 × 40 mm	0,14
313080	B	Reduction plain/plain 63 × 50 mm	0,15
313083	B	Reduction plain/plain 75 × 40 mm	0,21
313084	B	Reduction plain/plain 75 × 50 mm	0,22
313081	B	Reduction plain/plain 75 × 63 mm	0,26
313085	B	Reduction plain/plain 90 × 40 mm	0,35
313086	B	Reduction plain/plain 90 × 50 mm	0,35
313087	B	Reduction plain/plain 90 × 63 mm	0,38
313082	B	Reduction plain/plain 90 × 75 mm	0,41
313204	B	Reduction plain/plain 110 × 63 mm	0,61
313205	B	Reduction plain/plain 110 × 75 mm	0,63
313206	B	Reduction plain/plain 110 × 90 mm	0,70
313207	B	Reduction plain/plain 160 × 110 mm	1,69

PVC Socket



Cat. ID		Description - Ø mm	kg
313053	B	Socket plain/plain - diameter 20 mm	0,01
313054	B	Socket plain/plain - diameter 25 mm	0,02
313055	B	Socket plain/plain - diameter 32 mm	0,04
313056	B	Socket plain/plain - diameter 40 mm	0,06
313050	B	Socket plain/plain - diameter 50 mm	0,1
313051	B	Socket plain/plain - diameter 63 mm	0,16
313052	B	Socket plain/plain - diameter 75 mm	0,25
313057	B	Socket plain/plain - diameter 90 mm	0,43
313058	B	Socket plain/plain - diameter 110 mm	0,74
313059	B	Socket plain/plain - diameter 160 mm	1,98

PVC Reduction

Cat. ID	Description - Ø mm	kg
313350	B Reduction plain/plain 25 x 20 mm	0,01
313351	B Reduction plain/plain 32 x 20 mm	0,02
313352	B Reduction plain/plain 32 x 25 mm	0,01
313353	B Reduction plain/plain 40 x 20 mm	0,03
313354	B Reduction plain/plain 40 x 25 mm	0,03
313355	B Reduction plain/plain 40 x 32 mm	0,02
313356	B Reduction plain/plain 50 x 20 mm	0,05
313357	B Reduction plain/plain 50 x 25 mm	0,05
313094	B Reduction plain/plain 50 x 32 mm	0,04
313358	B Reduction plain/plain 50 x 40 mm	0,04
313093	B Reduction plain/plain 63 x 25 mm	0,09
313095	B Reduction plain/plain 63 x 32 mm	0,09
313096	B Reduction plain/plain 63 x 40 mm	0,08
313090	B Reduction plain/plain 63 x 50 mm	0,07
313097	B Reduction plain/plain 75 x 50 mm	0,11
313091	B Reduction plain/plain 75 x 63 mm	0,09
313098	B Reduction plain/plain 90 x 50 mm	0,21
313099	B Reduction plain/plain 90 x 63 mm	0,16
313092	B Reduction plain/plain 90 x 75 mm	0,15
313360	B Reduction plain/plain 110 x 63 mm	0,35
313361	B Reduction plain/plain 110 x 75 mm	0,28
313362	B Reduction plain/plain 110 x 90 mm	0,27
313363	B Reduction plain/plain 160 x 90 mm	1,06
313364	B Reduction plain/plain 160 x 110 mm	0,79



PVC Tee 90°

Cat. ID	Description - Ø mm	kg
313033	B Tee 90° plain/plain - diameter 20 mm	0,03
313034	B Tee 90° plain/plain - diameter 25 mm	0,05
313035	B Tee 90° plain/plain - diameter 32 mm	0,09
313036	B Tee 90° plain/plain - diameter 40 mm	0,14
313030	B Tee 90° plain/plain - diameter 50 mm	0,20
313031	B Tee 90° plain/plain - diameter 63 mm	0,36
313032	B Tee 90° plain/plain - diameter 75 mm	0,59
313037	B Tee 90° plain/plain - diameter 90 mm	1,04
313038	B Tee 90° plain/plain - diameter 110 mm	1,67
313039	B Tee 90° plain/plain - diameter 160 mm	4,34



PVC Tee 90° plain/female thread



Cat. ID	Description - Ø mm	kg
313420	B Tee 90° plain/female thread 20 x 1/2"	0,03
313421	B Tee 90° plain/female thread 25 x 1/2"	0,04
313422	B Tee 90° plain/female thread 25 x 3/4"	0,06
313423	B Tee 90° plain/female thread 32 x 1/2"	0,07
313424	B Tee 90° plain/female thread 32 x 3/4"	0,07
313425	B Tee 90° plain/female thread 32 x 1"	0,10
313426	B Tee 90° plain/female thread 40 x 1 1/4"	0,16
313427	B Tee 90° plain/female thread 50 x 1 1/2"	0,21
313428	B Tee 90° plain/female thread 63 x 2"	0,34

PVC Tee 90° plain/plain



Cat. ID	Description - Ø mm	kg
313380	B PVC Tee 90° plain/plain - reduction 25 x 20 mm	0,04
313381	B PVC Tee 90° plain/plain - redukce 32 x 20 mm	0,06
313382	B PVC Tee 90° plain/plain - reduction 32 x 25 mm	0,07
313383	B PVC Tee 90° plain/plain - reduction 40 x 20 mm	0,09
313384	B PVC Tee 90° plain/plain - reduction 40 x 25 mm	0,10
313385	B PVC Tee 90° plain/plain - reduction 40 x 32 mm	0,11
313386	B PVC Tee 90° plain/plain - reduction 50 x 20 mm	0,14
313387	B PVC Tee 90° plain/plain - reduction 50 x 25 mm	0,15
313388	B PVC Tee 90° plain/plain - reduction 50 x 32 mm	0,17
313389	B PVC Tee 90° plain/plain - reduction 50 x 40 mm	0,18
313390	B PVC Tee 90° plain/plain - reduction 63 x 25 mm	0,23
313391	B PVC Tee 90° plain/plain - reduction 63 x 32 mm	0,25
313392	B PVC Tee 90° plain/plain - reduction 63 x 40 mm	0,28
313393	B PVC Tee 90° plain/plain - reduction 63 x 50 mm	0,31
313394	B PVC Tee 90° plain/plain - reduction 75 x 40 mm	0,41
313395	B PVC Tee 90° plain/plain - reduction 75 x 50 mm	0,45
313396	B PVC Tee 90° plain/plain - reduction 75 x 63 mm	0,52
313397	B PVC Tee 90° plain/plain - reduction 90 x 40 mm	0,64
313398	B PVC Tee 90° plain/plain - reduction 90 x 63 mm	0,80
313399	B PVC Tee 90° plain/plain - reduction 90 x 75 mm	0,90

PVC Elbow 90°

Cat. ID	Description - Ø mm	kg
313043	B Elbow 90° plain/plain - diameter 20 mm	0,02
313044	B Elbow 90° plain/plain - diameter 25 mm	0,04
313045	B Elbow 90° plain/plain - diameter 32 mm	0,07
313046	B Elbow 90° plain/plain - diameter 40 mm	0,11
313040	B Elbow 90° plain/plain - diameter 50 mm	0,16
313041	B Elbow 90° plain/plain - diameter 63 mm	0,3
313042	B Elbow 90° plain/plain - diameter 75 mm	0,45
313047	B Elbow 90° plain/plain - diameter 90 mm	0,77
313048	B Elbow 90° plain/plain - diameter 110 mm	1,33
313049	B Elbow 90° plain/plain - diameter 160 mm	3,6



PVC Elbow 90° plain/female thread

Cat. ID	Description - Ø mm	kg
313400	B Elbow 90° plain/female thread 20 × 1/2"	0,03
313401	B Elbow 90° plain/female thread 25 × 1/2"	0,03
313402	B Elbow 90° plain/female thread 25 × 3/4"	0,05
313403	B Elbow 90° plain/female thread 32 × 1/2"	0,05
313404	B Elbow 90° plain/female thread 32 × 3/4"	0,06
313405	B Elbow 90° plain/female thread 32 × 1"	0,09
313406	B Elbow 90° plain/female thread 40 × 1 1/4"	0,13
313407	B Elbow 90° plain/female thread 50 × 1 1/2"	0,17
313408	B Elbow 90° plain/female thread 63 × 2"	0,31
313409	B Elbow 90° plain/female thread 75 × 2 1/2"	0,43
313410	B Elbow 90° plain/female thread 90 × 3"	0,75
313411	B Elbow 90° plain/female thread 110 × 4"	1,58



PVC Elbow 90° plain/plain - reduction

Cat. ID	Description - Ø mm	kg
313370	B Elbow 90° plain/plain - reduction 25 × 20 mm	0,03



PVC Elbow 45°



Cat. ID		Description - Ø mm	kg
313063	B	Elbow 45° plain/plain - diameter 20 mm	0,02
313064	B	Elbow 45° plain/plain - diameter 25 mm	0,03
313065	B	Elbow 45° plain/plain - diameter 32 mm	0,05
313066	B	Elbow 45° plain/plain - diameter 40 mm	0,09
313060	B	Elbow 45° plain/plain - diameter 50 mm	0,14
313061	B	Elbow 45° plain/plain - diameter 63 mm	0,22
313062	B	Elbow 45° plain/plain - diameter 75 mm	0,36
313067	B	Elbow 45° plain/plain - diameter 90 mm	0,60
313068	B	Elbow 45° plain/plain - diameter 110 mm	1,04
313069	B	Elbow 45° plain/plain - diameter 160 mm	2,86

PVC Cap



Cat. ID		Description - Ø mm	kg
313073	B	Cap plain/plain - diameter 20 mm	0,01
313074	B	Cap plain/plain - diameter 25 mm	0,02
313075	B	Cap plain/plain - diameter 32 mm	0,03
313076	B	Cap plain/plain - diameter 40 mm	0,04
313070	B	Cap plain/plain - diameter 50 mm	0,05
313071	B	Cap plain/plain - diameter 63 mm	0,09
313072	B	Cap plain/plain - diameter 75 mm	0,16
313077	B	Cap plain/plain - diameter 90 mm	0,32
313078	B	Cap plain/plain - diameter 110 mm	0,53

Cap plain - thread



Cat. ID		Description - Ø mm	kg
313433	B	Cap plain/thread - diameter 20 mm	0,01
313434	B	Cap plain/thread - diameter 25 mm	0,02
313435	B	Cap plain/thread - diameter 32 mm	0,3
313436	B	Cap plain/thread - diameter 40 mm	0,05
313430	B	Cap plain/thread - diameter 50 mm	0,07
313431	B	Cap plain/thread - diameter 63 mm	0,12

Elbow 90° plain/plain

Cat. ID	Description - Ø mm	kg/box
317070	B Elbow 90° plain/plain - 16 mm	
317071	B Elbow 90° plain/plain - 20 mm	7,80
317072	B Elbow 90° plain/plain - 25 mm	8,70
317073	B Elbow 90° plain/plain - 32 mm	7,38
317074	B Elbow 90° plain/plain - 40 mm	9,20
317075	B Elbow 90° plain/plain - 50 mm	8,40
317076	B Elbow 90° plain/plain - 63 mm	6,33
317077	B Elbow 90° plain/plain - 75 mm	9,04
317078	B Elbow 90° plain/plain - 90 mm	22,41
317079	B Elbow 90° plain/plain - 110 mm	19,44
317080	B Elbow 90° plain/plain - 125 mm	18,78
317081	B Elbow 90° plain/plain - 140 mm	15,92
317082	B Elbow 90° plain/plain - 160 mm	15,10
317083	B Elbow 90° plain/plain - 200 mm	15,56
317084	B Elbow 90° plain/plain - 225 mm	26,70
317085	B Elbow 90° plain/plain - 250 mm	21,60
317086	B Elbow 90° plain/plain - 315 mm	22,40
317087	B Elbow 90° plain/plain - 400 mm	



Elbow 90° plain/female thread

Cat. ID	Description - Ø mm	kg/box
317090	B Elbow 90° - 20 x 1/2"	17,10
317091	B Elbow 90° - 25 x 1/2"	14,00
317092	B Elbow 90° - 25 x 3/4"	14,00
317093	B Elbow 90° - 32 x 1"	12,96
317094	B Elbow 90° - 40 x 1 1/4"	10,90
317095	B Elbow 90° - 50 x 1 1/2"	10,44
317096	B Elbow 90° - 63 x 2"	10,56
317097	B Elbow 90° - 75 x 2 1/2"	19,80
317098	B Elbow 90° - 90 x 3"	22,90
317099	B Elbow 90° - 110 x 4"	17,00



Elbow 90° with ring reinforcement plain/female thread

Cat. ID	Description - Ø mm	kg/box
317100	B Elbow 90° - 20 x 1/2"	14,00
317101	B Elbow 90° - 25 x 1/2"	12,96
317102	B Elbow 90° - 25 x 3/4"	10,90
317103	B Elbow 90° - 32 x 1"	9,52
317104	B Elbow 90° - 40 x 1 1/4"	7,97
317105	B Elbow 90° - 50 x 1 1/2"	6,42
317106	B Elbow 90° - 63 x 2"	4,87



Elbow 90° plain/male thread



Cat. ID		Description - Ø mm	kg/box
317620	B	Elbow 90° - 32 x 3/4 "	-
317621	B	Elbow 90° - 32 x 1 "	-
317622	B	Elbow 90° - 32 x 1 1/4 "	-
317623	B	Elbow 90° - 40 x 1 1/4 "	-
317624	B	Elbow 90° - 40 x 1 1/2 "	-
317625	B	Elbow 90° - 50 x 1 1/4 "	-
317626	B	Elbow 90° - 50 x 1 1/2 "	-
317627	B	Elbow 90° - 50 x 2 "	-
317628	B	Elbow 90° - 63 x 2 "	-

Elbow 90° plain/male



Cat. ID		Description - Ø mm	kg/box
317630	B	Elbow 90° - 40 x 40 x 32	-
317631	B	Elbow 90° - 50 x 40 x 32	-
317632	B	Elbow 90° - 50 x 50 x 40	-
317633	B	Elbow 90° - 63 x 63 x 50	-

Bend 90° plain/plain



Cat. ID		Description - Ø mm	kg/box
317380	B	Bend 90° - 20	14,00
317381	B	Bend 90° - 25	12,00
317382	B	Bend 90° - 32	13,20
317383	B	Bend 90° - 40	-
317384	B	Bend 90° - 50	-
317385	B	Bend 90° - 63	-
317386	B	Bend 90° - 75	-
317387	B	Bend 90° - 90	-
317388	B	Bend 90° - 110	-
317389	B	Bend 90° - 125	-
317390	B	Bend 90° - 140	-
317391	B	Bend 90° - 160	-
317392	B	Bend 90° - 200	-
317393	B	Bend 90° - 225	-
317394	B	Bend 90° - 250	-
317395	B	Bend 90° - 315	-

Elbow 45° plain/plain

Cat. ID	Description - Ø mm	kg/box
317110	B Elbow 45° - 16	-
317111	B Elbow 45° - 20	11,2
317112	B Elbow 45° - 25	9,45
317113	B Elbow 45° - 32	9,6
317114	B Elbow 45° - 40	3,36
317115	B Elbow 45° - 50	7,63
317116	B Elbow 45° - 63	7,4
317117	B Elbow 45° - 75	6,6
317118	B Elbow 45° - 90	19,36
317119	B Elbow 45° - 110	19,2
317120	B Elbow 45° - 125	17,98
317121	B Elbow 45° - 140	12,11
317122	B Elbow 45° - 160	13,47
317123	B Elbow 45° - 200	19,81
317124	B Elbow 45° - 225	20,6
317125	B Elbow 45° - 250	17,1
317126	B Elbow 45° - 315	16,9
317127	B Elbow 45° - 400	-



Tee 90° plain/plain/plain

Cat. ID	Description - Ø mm	kg/box
317400	B Tee 90° - 16	-
317401	B Tee 90° - 20	6,80
317402	B Tee 90° - 25	6,00
317403	B Tee 90° - 32	7,28
317404	B Tee 90° - 40	8,33
317405	B Tee 90° - 50	8,40
317406	B Tee 90° - 63	5,88
317407	B Tee 90° - 75	7,15
317408	B Tee 90° - 90	20,94
317409	B Tee 90° - 110	16,32
317410	B Tee 90° - 125	16,52
317411	B Tee 90° - 140	15,13
317412	B Tee 90° - 160	15,83
317413	B Tee 90° - 200	13,41
317414	B Tee 90° - 225	20,10
317415	B Tee 90° - 250	28,00
317416	B Tee 90° - 315	27,60
317417	B Tee 90° - 400	-



Tee 90° plain/female thread (middle)



Cat. ID		Description - Ø mm	kg/box
317420	B	Tee 90° - 20 x 1/2"	13,65
317421	B	Tee 90° - 25 x 1/2"	8,00
317422	B	Tee 90° - 25 x 3/4"	13,00
317423	B	Tee 90° - 32 x 1"	12,00
317424	B	Tee 90° - 40 x 1 1/4"	10,15
317425	B	Tee 90° - 50 x 1/2"	-
317426	B	Tee 90° - 50 x 3/4"	-
317427	B	Tee 90° - 50 x 1"	-
317428	B	Tee 90° - 50 x 1 1/2"	11,30
317429	B	Tee 90° - 63 x 1/2"	-
317430	B	Tee 90° - 63 x 1 1/2"	-
317431	B	Tee 90° - 63 x 2"	10,80
317432	B	Tee 90° - 75 x 1 1/2"	7,20
317433	B	Tee 90° - 90 x 1 1/2"	6,71
317434	B	Tee 90° - 90 x 3"	21,30
317435	B	Tee 90° - 110 x 1 1/2"	23,80
317436	B	Tee 90° - 110 x 2"	21,48
317437	B	Tee 90° - 110 x 4"	15,70

Tee 90° - female thread



Cat. ID		Description - Ø mm	kg/box
317440	B	Tee 90° - 1/2"	14,00
317441	B	Tee 90° - 3/4"	12,60
317442	B	Tee 90° - 1"	12,00
317443	B	Tee 90° - 1 1/4"	9,94
317444	B	Tee 90° - 1 1/2"	11,80
317445	B	Tee 90° - 2"	10,80
317446	B	Tee 90° - 2 1/2"	3,70
317447	B	Tee 90° - 3"	3,30
317448	B	Tee 90° - 4"	3,20

Tee 45° plain/plain



Cat. ID		Description - Ø mm	kg/box
317490	B	Tee 45° - 20	
317491	B	Tee 45° - 25	
317492	B	Tee 45° - 32	
317493	B	Tee 45° - 40	
317494	B	Tee 45° - 50	
317495	B	Tee 45° - 63	
317496	B	Tee 45° - 75	
317497	B	Tee 45° - 90	
317498	B	Tee 45°	

Cross 90° plain/plain

Cat. ID	Description - Ø mm	kg/box
317001	B Cross 90° - 20	13,65
317002	B Cross 90° - 25	6,80
317003	B Cross 90° - 32	5,70
317004	B Cross 90° - 40	5,70
317005	B Cross 90° - 50	7,32
317006	B Cross 90° - 63	6,30
317007	B Cross 90° - 75	4,73
317008	B Cross 90° - 90	18,77
317009	B Cross 90° - 110	14,96



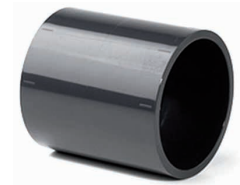
Tee 90° reduction plain/plain



Cat. ID		Description - Ø mm	kg/box
317450	B	Tee 90° - 25 x 20	7
317451	B	Tee 90° - 32 x 20	6,72
317452	B	Tee 90° - 32 x 25	7,2
317453	B	Tee 90° - 40 x 20	7,2
317454	B	Tee 90° - 40 x 25	6,66
317455	B	Tee 90° - 40 x 32	5,92
317456	B	Tee 90° - 50 x 20	9,15
317457	B	Tee 90° - 50 x 25	9,3
317458	B	Tee 90° - 50 x 32	13,4
317459	B	Tee 90° - 50 x 40	14,9
317460	B	Tee 90° - 63 x 20	-
317461	B	Tee 90° - 63 x 25	-
317462	B	Tee 90° - 63 x 32	-
317463	B	Tee 90° - 63 x 40	16,7
317464	B	Tee 90° - 63 x 50	20,5
317465	B	Tee 90° - 75 x 50	20,16
317466	B	Tee 90° - 75 x 63	21,14
317467	B	Tee 90° - 90 x 40	-
317468	B	Tee 90° - 90 x 50	21,63
317469	B	Tee 90° - 90 x 63	8,4
317470	B	Tee 90° - 90 x 75	21,14
317471	B	Tee 90° - 110 x 50	21,26
317472	B	Tee 90° - 110 x 63	19,96
317473	B	Tee 90° - 110 x 75	20,31
317474	B	Tee 90° - 110 x 90	18,26
317475	B	Tee 90° - 125 x 63	-
317476	B	Tee 90° - 125 x 75	-
317477	B	Tee 90° - 125 x 90	-
317478	B	Tee 90° - 125 x 110	-
317479	B	Tee 90° - 140 x 75	-
317480	B	Tee 90° - 140 x 90	-
317481	B	Tee 90° - 140 x 110	-
317482	B	Tee 90° - 140 x 125	-
317483	B	Tee 90° - 160 x 90	-
317484	B	Tee 90° - 160 x 110	-
317485	B	Tee 90° - 160 x 125	-
317486	B	Tee 90° - 160 x 140	-

Socket plain/plain

Cat. ID	Description - Ø mm	kg/box
317220	B Socket - 15	-
317221	B Socket - 20	10,45
317222	B Socket - 25	8,8
317223	B Socket - 32	7,8
317224	B Socket - 40	7,38
317225	B Socket - 50	8,5
317226	B Socket - 63	8,4
317227	B Socket - 75	7,38
317228	B Socket - 90	7,52
317229	B Socket - 110	20,13
317230	B Socket - 125	20,64
317231	B Socket - 140	20,59
317232	B Socket - 160	17,14
317233	B Socket - 200	12,7
317234	B Socket - 225	17,5
317235	B Socket - 250	21,5
317236	B Socket - 315	22,4
317237	B Socket - 400	-



Socket plain/female thread

Cat. ID	Description - Ø mm	kg/box
317240	B Socket - 16 x 3/8"	6,1
317241	B Socket - 20 x 1/2"	13,8
317242	B Socket - 25 x 3/4"	13,6
317243	B Socket - 32 x 1"	12,75
317244	B Socket - 40 x 1 1/4"	10,65
317245	B Socket - 50 x 1 1/2"	11,88
317246	B Socket - 63 x 2"	10,14
317247	B Socket - 75 x 2 1/2"	10,8
317248	B Socket - 90 x 3"	9,7
317249	B Socket - 110 x 4"	7,6



Socket with ring reinforcement plain/female thread

Cat. ID	Description - Ø mm	kg/box
317250	B Socket - 16 x 3/8 "	-
317251	B Socket - 20 x 1/2 "	-
317252	B Socket - 25 x 3/4 "	-
317253	B Socket - 32 x 1 "	-
317254	B Socket - 40 x 1 1/4 "	-
317255	B Socket - 50 x 1 1/2 "	-
317256	B Socket - 63 x 2 "	-



Socket female/female thread



Cat. ID		Description - Ø mm	kg/box
317590	B	Socket - 3/8 "	6,2
317591	B	Socket - 1/2 "	13,8
317592	B	Socket - 3/4 "	13,6
317593	B	Socket - 1"	13
317594	B	Socket - 1 1/4 "	11,52
317595	B	Socket - 1 1/2 "	14,4
317596	B	Socket - 2"	11,46
317597	B	Socket - 2 1/2 "	10,8
317598	B	Socket - 3"	9,8
317599	B	Socket - 4"	7,6

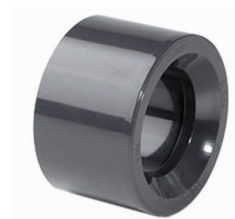
Reduction plain/plain



Cat. ID		Description - Ø mm	kg/box
317550	B	Reduction long - 25 x 20	9,10
317551	B	Reduction long - 32 x 20 x 25	9,60
317552	B	Reduction long - 32 x 25	14,30
317553	B	Reduction long - 40 x 25	12,90
317554	B	Reduction long - 40 x 32	13,50
317555	B	Reduction long - 50 x 32	11,85
317556	B	Reduction long - 50 x 40	9,57
317557	B	Reduction long - 63 x 50	10,53
317558	B	Reduction long - 75 x 50	10,86
317559	B	Reduction long - 75 x 63	7,85
317560	B	Reduction long - 90 x 63	9,03
317561	B	Reduction long - 90 x 75	9,13
317562	B	Reduction long - 110 x 63	9,48
317563	B	Reduction long - 110 x 75	9,89
317564	B	Reduction long - 110 x 90	10,02
317565	B	Reduction long - 125 x 63 x 75	7,76
317566	B	Reduction long - 125 x 75 x 90	8,08
317567	B	Reduction long - 125 x 90 x 110	8,69
317568	B	Reduction long - 125 x 110 x 125	26,40
317569	B	Reduction long - 140 x 75 x 90	19,66
317570	B	Reduction long - 140 x 90 x 110	22,64
317571	B	Reduction long - 140 x 110 x 125	25,85
317572	B	Reduction long - 140 x 125	17,82
317573	B	Reduction long - 160 x 75 x 90	17,82
317574	B	Reduction long - 160 x 90 x 110	19,00
317575	B	Reduction long - 160 x 110 x 125	18,24
317576	B	Reduction long - 160 x 125 x 140	22,80
317577	B	Reduction long - 200 x 110	16,42
317578	B	Reduction long - 200 x 125	16,76
317579	B	Reduction long - 200 x 140	17,04
317580	B	Reduction long - 200 x 160	17,72

Reduction plain/plain

Cat. ID	Description - Ø mm	kg/box
317150	B Reduction - 20 x 16	6,25
317151	B Reduction - 25 x 16	7,00
317152	B Reduction - 25 x 20	7,20
317153	B Reduction - 32 x 20	14,50
317154	B Reduction - 32 x 25	9,50
317155	B Reduction - 40 x 20	-
317156	B Reduction - 40 x 25	14,00
317157	B Reduction - 40 x 32	14,00
317158	B Reduction - 50 x 20	12,10
317159	B Reduction - 50 x 25	12,00
317160	B Reduction - 50 x 32	12,00
317161	B Reduction - 50 x 40	9,00
317162	B Reduction - 63 x 32	-
317163	B Reduction - 63 x 40	12,16
317164	B Reduction - 63 x 50	12,92
317165	B Reduction - 75 x 40	-
317166	B Reduction - 75 x 50	10,50
317167	B Reduction - 75 x 63	8,00
317168	B Reduction - 90 x 50	-
317169	B Reduction - 90 x 63	8,88
317170	B Reduction - 90 x 75	8,75
317171	B Reduction - 110 x 50	11,00
317172	B Reduction - 110 x 63	11,30
317173	B Reduction - 110 x 75	11,80
317174	B Reduction - 110 x 90	11,80
317175	B Reduction - 125 x 75	-
317176	B Reduction - 125 x 90	-
317177	B Reduction - 125 x 110	-
317178	B Reduction - 140 x 90	-
317179	B Reduction - 140 x 110	-
317180	B Reduction - 140 x 125	-
317181	B Reduction - 160 x 90	-
317182	B Reduction - 160 x 110	4,90
317183	B Reduction - 160 x 125	-
317184	B Reduction - 160 x 140	7,40
317185	B Reduction - 200 x 160	22,50
317186	B Reduction - 200 x 180	-
317187	B Reduction - 225 x 140	-
317188	B Reduction - 225 x 160	11,10
317189	B Reduction - 225 x 200	13,60
317190	B Reduction - 250 x 160	-
317191	B Reduction - 250 x 200	16,40
317192	B Reduction - 250 x 225	11,30
317193	B Reduction - 315 x 200	-
317194	B Reduction - 315 x 225	-
317195	B Reduction - 315 x 250	16,59



Stub serrated



Cat. ID		Description - Ø mm	kg/box
317130	B	Stub serrated - 20	-
317131	B	Stub serrated - 25	-
317132	B	Stub serrated - 32	-
317133	B	Stub serrated - 40	-
317134	B	Stub serrated - 50	8,25
317135	B	Stub serrated - 63	8,72
317136	B	Stub serrated - 75	8,97
317137	B	Stub serrated - 90	7,8
317138	B	Stub serrated - 110	22
317139	B	Stub serrated - 125	5,3
317140	B	Stub serrated - 140	15,71
317141	B	Stub serrated - 160	22,09
317142	B	Stub serrated - 200	12,28
317143	B	Stub serrated - 225	11,8
317144	B	Stub serrated - 250	14,7
317145	B	Stub serrated - 315	24,2
317146	B	Stub serrated - 400	-

Flange loose



Cat. ID		Description - Ø mm	kg/box
317640	B	Flange - 20	-
317641	B	Flange - 25	-
317642	B	Flange - 32	-
317643	B	Flange - 40	-
317644	B	Flange - 50	16,10
317645	B	Flange - 63	15,00
317646	B	Flange - 75	14,80
317647	B	Flange - 90	14,10
317648	B	Flange - 110	14,25
317649	B	Flange - 125	11,40
317650	B	Flange - 140	11,56
317651	B	Flange - 160	10,30
317652	B	Flange - 200	22,35
317653	B	Flange - 225	21,50
317654	B	Flange - 250	20,00
317655	B	Flange - 315	27,20
317656	B	Flange - 400	-

Cap plain

Cat. ID	Description - Ø mm	kg/box
317200	B Cap - 16	-
317201	B Cap - 20	9,80
317202	B Cap - 25	10,00
317203	B Cap - 32	9,00
317204	B Cap - 40	7,20
317205	B Cap - 50	1,18
317206	B Cap - 63	10,00
317207	B Cap - 75	10,80
317208	B Cap - 90	10,50
317209	B Cap - 110	11,00
317210	B Cap - 125	10,04
317211	B Cap - 140	5,56
317212	B Cap - 160	8,97
317213	B Cap - 200	22,80
317214	B Cap - 225	14,40
317215	B Cap - 250	16,90
317216	B Cap - 315	34,50



Cap female thread

Cat. ID	Description - Ø mm	kg/box
317660	B Cap - 3/8"	2,00
317661	B Cap - 1/2"	16,20
317662	B Cap - 3/4"	14,40
317663	B Cap - 1"	16,00
317664	B Cap - 1 1/4"	14,40
317665	B Cap - 1 1/2"	14,00
317666	B Cap - 2"	15,12
317667	B Cap - 2 1/2"	3,10
317668	B Cap - 3"	7,10
317669	B Cap - 4"	5,60



Cap male thread

Cat. ID	Description - Ø mm	kg/box
317670	B Cap - 1/2"	12,60
317671	B Cap - 3/4"	13,30
317672	B Cap - 1"	14,50
317673	B Cap - 1 1/4"	13,20
317674	B Cap - 1 1/2"	12,80
317675	B Cap - 2"	11,50



Adapter plain/male thread



Cat. ID		Description - Ø mm	kg/box
317300	B	Adapter - 20 x 1/2"	18,05
317301	B	Adapter - 25 x 3/4"	7,60
317302	B	Adapter - 32 x 1"	15,30
317303	B	Adapter - 40 x 1 1/4"	9,18
317304	B	Adapter - 50 x 1 1/2"	11,55
317305	B	Adapter - 50 x 1"	11,85
317306	B	Adapter - 63 x 1"	9,40
317307	B	Adapter - 63 x 1 1/2"	9,70
317308	B	Adapter - 63 x 2"	11,60
317309	B	Adapter - 75 x 2 1/2"	-
317310	B	Adapter - 90 x 3"	-
317311	B	Adapter - 110 x 4"	-

Adapter reduction male/male thread



Cat. ID		Description - Ø mm	kg/box
317320	B	Adapter reduction - 3/4" x 1/2"	14,00
317321	B	Adapter reduction - 3/4" x 3/8"	-
317322	B	Adapter reduction - 1" x 3/4"	6,10
317323	B	Adapter reduction - 1" x 1/2"	7,70
317324	B	Adapter reduction - 1" x 3/8"	-
317325	B	Adapter reduction - 1 1/4" x 1"	6,60
317326	B	Adapter reduction - 1 1/4" x 3/4"	8,00
317327	B	Adapter reduction - 1 1/4" x 1/2"	8,80
317328	B	Adapter reduction - 1 1/2" x 1 1/4"	-
317329	B	Adapter reduction - 1 1/2" x 1"	-
317330	B	Adapter reduction - 1/2" x 1/2"	-
317331	B	Adapter reduction - 1 1/2" x 3/4"	7,50
317334	B	Adapter reduction - 2" x 1 1/2"	2,40
317335	B	Adapter reduction - 2" x 1 1/4"	3,10
317336	B	Adapter reduction - 2" x 1"	3,10
317337	B	Adapter reduction - 2" x 3/4"	-

Adaptor male threaded

Cat. ID	Description - Ø mm	kg/box
317340	B Adapter - 3/8"	-
317341	B Adapter - 1/2"	10,00
317342	B Adapter - 3/4"	13,00
317343	B Adapter - 1"	10,50
317344	B Adapter - 1 1/4"	15,00
317345	B Adapter - 1 1/2"	10,50
317346	B Adapter - 2"	9,60



Adapter

Cat. ID	Description - Ø mm	kg/box
317350	B Adapter - 20 - 16 x 1/2"	-
317351	B Adapter - 20 - 16 x 3/8"	-
317352	B Adapter - 25 - 20 x 1/2"	11,70
317353	B Adapter - 25 - 20 x 3/4"	-
317354	B Adapter - 32 - 25 x 1/2"	-
317355	B Adapter - 32 - 25 x 3/4"	10,35
317356	B Adapter - 32 - 25 x 1"	-
317357	B Adapter - 40 - 32 x 3/4"	-
317358	B Adapter - 40 - 32 x 1"	10,20
317359	B Adapter - 40 - 32 x 1 1/4"	-
317360	B Adapter - 50 - 40 x 1"	-
317361	B Adapter - 50 - 40 x 1 1/4"	10,20
317362	B Adapter - 50 - 40 x 1 1/2"	9,52
317363	B Adapter - 63 - 50 x 1 1/4"	-
317364	B Adapter - 63 - 50 x 1 1/2"	11,30
317365	B Adapter - 63 - 50 x 2"	10,80
317366	B Adapter - 75 - 63 x 1 1/2"	-
317367	B Adapter - 75 - 63 x 2"	-
317368	B Adapter - 75 - 63 x 2 1/2"	-
317369	B Adapter - 90 - 75 x 2"	-
317370	B Adapter - 90 - 75 x 2 1/2"	9,65
317371	B Adapter - 90 - 75 x 3"	8,70
317372	B Adapter - 110 - 90 x 2 1/2"	23,05
317373	B Adapter - 110 - 90 x 3"	9,36
317374	B Adapter - 110 - 90 x 4"	8,90
317375	B Adapter - 125 - 110 x 2 1/2"	20,00
317376	B Adapter - 125 - 110 x 3"	20,88
317377	B Adapter - 125 - 110 x 4"	15,93



Threaded adaptor



Cat. ID	Description - Ø mm	kg/box
317260	B Threaded adaptor - 20 - 16 x 1/4 "	-
317261	B Threaded adaptor - 20 - 16 x 3/8 "	-
317262	B Threaded adaptor - 20 - 16 x 1/2 "	-
317263	B Threaded adaptor - 20 - 16 x 3/4 "	-
317264	B Threaded adaptor - 25 - 20 x 1/2 "	11,70
317265	B Threaded adaptor - 25 - 20 x 3/4 "	-
317266	B Threaded adaptor - 25 - 20 x 1"	-
317267	B Threaded adaptor - 32 - 25 x 1/2 "	-
317268	B Threaded adaptor - 32 - 25 x 3/4 "	10,35
317269	B Threaded adaptor - 32 - 25 x 1"	-
317270	B Threaded adaptor - 32 - 25 x 1 1/4 "	-
317271	B Threaded adaptor - 40 - 32 x 1"	10,25
317272	B Threaded adaptor - 40 - 32 x 1 1/4 "	-
317273	B Threaded adaptor - 40 - 32 x 1 1/2 "	-
317274	B Threaded adaptor - 50 - 40 x 1 1/4 "	10,20
317275	B Threaded adaptor - 50 - 40 x 1 1/2 "	9,52
317276	B Threaded adaptor - 50 - 40 x 2 "	-
317277	B Threaded adaptor - 63 - 50 x 1 1/2 "	11,30
317278	B Threaded adaptor - 63 - 50 x 2 "	10,80
317279	B Threaded adaptor - 63 - 50 x 2 1/2 "	-
317280	B Threaded adaptor - 75 - 63 x 2 "	-
317281	B Threaded adaptor - 75 - 63 x 2 1/2 "	-
317282	B Threaded adaptor - 75 - 63 x 3 "	-
317283	B Threaded adaptor - 90 - 75 x 2 1/2"	9,65
317284	B Threaded adaptor - 90 - 75 x 3"	8,70
317285	B Threaded adaptor - 90 - 75 x 4"	-
317286	B Threaded adaptor - 110 - 90 x 2 1/2 "	23,05
317287	B Threaded adaptor - 110 - 90 x 3 "	9,36
317288	B Threaded adaptor - 110 - 90 x 4 "	8,90
317289	B Threaded adaptor - 125 - 110 x 2 1/2 "	20,00
317290	B Threaded adaptor - 125 - 110 x 3 "	20,88
317291	B Threaded adaptor - 125 - 110 x 4 "	15,93

Transition short with thread female thread/male thread



Cat. ID	Description - Ø mm	kg/box
317295	B Transition short with thread - 1/2 " x 1/4 "	-
317296	B Transition short with thread - 3/4 " x 1/2 "	10,80
317297	B Transition short with thread - 1" x 1/2 "	14,00
317298	B Transition short with thread - 2 x 1 1/2 "	-

Union 3-pieces plain/plain

Cat. ID	Description - Ø mm	kg/box
317500	B Union 3-pieces - 16	-
317501	B Union 3-pieces - 20	13,25
317502	B Union 3-pieces - 25	12,60
317503	B Union 3-pieces - 32	12,20
317504	B Union 3-pieces - 40	12,18
317505	B Union 3-pieces - 50	11,25
317506	B Union 3-pieces - 63	9,77
317507	B Union 3-pieces - 75	9,70
317508	B Union 3-pieces - 90	10,10
317509	B Union 3-pieces - 110	8,20



Union 3-pieces plain/female thread

Cat. ID	Description - Ø mm	kg/box
317510	B Union 3-pieces - 16 x 3/8 "	-
317511	B Union 3-pieces - 20 x 1/2 "	12,25
317512	B Union 3-pieces - 25 x 3/4 "	12,90
317513	B Union 3-pieces - 32 x 1"	12,30
317514	B Union 3-pieces - 40 x 1 1/4 "	12,06
317515	B Union 3-pieces - 50 x 1 1/2 "	11,79
317516	B Union 3-pieces - 63 x 2"	10,49
317517	B Union 3-pieces - 75 x 2 1/2 "	-
317518	B Union 3-pieces - 90 x 3"	-
317519	B Union 3-pieces - 110 x 4"	-



Union 3-pieces female/female thread

Cat. ID	Description - Ø mm	kg/box
317520	B Union 3-pieces - 3/8 "	-
317521	B Union 3-pieces - 1/2 "	13,25
317522	B Union 3-pieces - 3/4 "	12,60
317523	B Union 3-pieces - 1"	12,20
317524	B Union 3-pieces - 1 1/4"	12,06
317525	B Union 3-pieces - 1 1/2 "	12,29
317526	B Union 3-pieces - 2"	10,80
317527	B Union 3-pieces - 2 1/2 "	-



Union 3-pieces female thread/male thread



Cat. ID	Description - Ø mm	kg/box
317530	B Union 3-pieces - 1/2 "	14,00
317531	B Union 3-pieces - 3/4 "	13,20
317532	B Union 3-pieces - 1 "	14,30
317533	B Union 3-pieces - 1 1/4 "	12,96
317534	B Union 3-pieces - 1 1/2 "	12,29
317535	B Union 3-pieces - 2 "	11,21

Union 3-pieces plain/male thread



Cat. ID	Description - Ø mm	kg/box
317540	B Union 3-pieces - 16 x 3/8 "	-
317541	B Union 3-pieces - 20 x 1/2 "	14,00
317542	B Union 3-pieces - 25 x 3/4 "	13,20
317543	B Union 3-pieces - 32 x 1 "	13,30
317544	B Union 3-pieces - 40 x 1 1/4 "	12,96
317545	B Union 3-pieces - 50 x 1 1/2 "	4,50
317546	B Union 3-pieces - 63 x 2 "	3,36
317547	B Union 3-pieces - 75 x 2 1/2 "	-
317548	B Union 3-pieces - 90 x 3 "	-
317549	B Union 3-pieces - 110 x 4 "	-

Adaptor PVC



Cat. ID	Description - Ø mm	kg/box
317680	B Adaptor PVC - 16 - 20 x 1/2 "	-
317681	B Adaptor PVC - 20 - 25 x 3/4 "	-
317682	B Adaptor PVC - 25 - 32 x 1 "	-
317683	B Adaptor PVC - 32 - 40 x 1 1/4 "	-
317684	B Adaptor PVC - 40 - 50 x 1 3/4 "	-
317685	B Adaptor PVC - 63 x 2 1/2 "	-

Adaptor plain



Cat. ID	Description - Ø mm	kg/box
317690	B Adaptor plain - 50 x 2 " ext.- CH	1,17
317691	B Adaptor plain - 63 x 2 1/2 " ext.- CH	1,26
317692	B Adaptor plain - 75 x 3 " ext. - CH	-

Hose adapter with thread

Cat. ID	Description - Ø mm	kg/box
317700	B Hose adapter with thread - 1/2 "	12,00
317701	B Hose adapter with thread - 3/4 "	12,00
317702	B Hose adapter with thread - 1"	9,60
317703	B Hose adapter with thread - 1 1/4 "	9,60
317704	B Hose adapter with thread - 1 1/2 "	9,00
317705	B Hose adapter with thread - 2"	7,80



Conical hose adapter with thread

Cat. ID	Description - Ø mm	kg/box
317710	B Conical hose adapter - 1/2 "	9,00
317711	B Conical hose adapter - 3/4 "	12,60
317712	B Conical hose adapter - 1"	8,12
317713	B Conical hose adapter - 1 1/4 "	9,72
317714	B Conical hose adapter - 1 1/2 "	8,20
317715	B Conical hose adapter - 2"	8,82



Hose adapter plain

Cat. ID	Description - Ø mm	kg/box
317720	B Hose adapter - 20	12,00
317721	B Hose adapter - 25	10,80
317722	B Hose adapter - 32	10,08
317723	B Hose adapter - 40	9,24
317724	B Hose adapter - 50	8,80
317725	B Hose adapter - 63	7,98



Conical hose adapter plain

Cat. ID	Description - Ø mm	kg/box
317730	B Conical hose adapter - 20	12,60
317731	B Conical hose adapter - 25	12,60
317732	B Conical hose adapter - 32	8,12
317733	B Conical hose adapter - 40	9,72
317734	B Conical hose adapter - 50	8,00
317735	B Conical hose adapter - 63	8,70



Flat gasket EVA



Cat. ID		Description - Ø mm	kg/box
317600	B	Flat gasket EVA - 20	-
317601	B	Flat gasket EVA - 25	-
317602	B	Flat gasket EVA - 32	-
317603	B	Flat gasket EVA - 40	-
317604	B	Flat gasket EVA - 50	-
317605	B	Flat gasket EVA - 63	-
317606	B	Flat gasket EVA - 75	-
317607	B	Flat gasket EVA - 90	-
317608	B	Flat gasket EVA - 110	-
317609	B	Flat gasket EVA - 125	-
317610	B	Flat gasket EVA - 140	-
317611	B	Flat gasket EVA - 160	-
317612	B	Flat gasket EVA - 200	-
317613	B	Flat gasket EVA - 225	-
317614	B	Flat gasket EVA - 250	-
317615	B	Flat gasket EVA - 315	-

PVC pipe

Cat. ID	Description
317020	B Pipe PVC 20 × 1,5 mm PN 16 grey 5 m (Price is per M)
317021	B Pipe PVC 32 × 1,6 mm PN 10 grey 5 m (Price is per M)
317022	B Pipe PVC 40 × 1,9 mm PN 10 grey 5 m (Price is per M)
317023	B Pipe PVC 50 × 2,4 mm PN 10 grey 4 m (Price is per M)
317024	B Pipe PVC 63 × 2,4 mm PN 10 grey 5 m (Price is per M)
317025	B Pipe PVC 75 × 2,9 mm PN 10 grey 5 m (Price is per M)
317026	B Pipe PVC 90 × 3,5 mm PN 10 grey 5 m (Price is per M)
317027	B Pipe PVC 110 × 4,2 mm PN 10 grey 5 m (Price is per M)
317028	B Pipe PVC 125 × 4,8 mm PN 10 grey 5 m (Price is per M)
317029	B Pipe PVC 160 × 6,2 mm PN 10 grey 5 m (Price is per M)
317030	B Pipe PVC 200 × 7,7 mm PN 10 grey 5 m (Price is per M)



PVC hose

Cat. ID	Description	kg
317740	B PVC Flexi hose 20 mm ext (16 mm int) 25 m - ES	
317741	B PVC Flexi hose 25 mm ext (20 mm int) 25 m - ES	
317742	B PVC Flexi hose 32 mm ext (26 mm int) 25 m - ES	
317743	B PVC Flexi hose 40 mm ext (34 mm int) 25 m - ES	
317744	B PVC Flexi hose 50 mm ext (43 mm int) 25 m - ES	18
317745	B PVC Flexi hose 63 mm ext (55 mm int) 25 m - ES	
317746	B PVC Flexi hose 75 mm ext (65 mm int) 25 m - ES	
317747	B PVC Flexi hose 90 mm ext (80 mm int) 25 m - ES	
317748	B PVC Flexi hose 110 mm ext (100 mm int) 25 m - ES	
317749	B PVC Flexi hose 125 mm ext (110 mm int) 25 m - ES	



Cat. ID	Description - Ø mm	kg/box
317750	B Clamp open - 12	6,75
317751	B Clamp open - 16	8,00
317752	B Clamp open - 20	6,60
317753	B Clamp open - 25	6,00
317754	B Clamp open - 32	7,00
317755	B Clamp open - 40	7,20
317756	B Clamp open - 50	6,60

Clamp open PP



Cat. ID	Description - Ø mm	kg/box
317760	B Clamp closed - 63	8,00
317761	B Clamp closed - 75	7,14
317762	B Clamp closed - 90	6,84
317763	B Clamp closed - 110	5,52

Clamp closed PP





SABA - plain PVC



Cat. ID	Description	kg/box
313601	B plain SABA PVC 2875 incl. brush - 250 ml	6,25
313602	B plain SABA PVC 2875 incl. brush - 650 ml	13,00
313603	B plain SABA PVC 2875 incl. brush - 1 000 ml	12,50

SABA - cleaner PVC & ABS



Cat. ID	Description	kg/box
313611	B cleaner SABA Sabaclean PVC & ABS -250 ml	6,25
313612	B cleaner SABA Sabaclean PVC & ABS - 650 ml	13,00
313613	B cleaner SABA Sabaclean PVC & ABS - 4,5 kg	4,60

SABA - plain for liner



Cat. ID	Description	kg/box
313621	B plain Sabacontact 70T-250 ml incl. brush	6,25
313622	B plain Sabacontact 70T-1000 ml	12,50
313623	B plain Sabacontact 70T-5 kg	5,00

SABA (NETHERLANDS), specialist in plains & sealing materials

Since 2013, we exclusively represent products of SABA, who are leaders in the field of adhesives on the world market. SABA is on the market for 75 years as an independent global manufacturer of high-quality adhesives and sealants for industrial and construction applications. The company has a worldwide distribution network,

which we are an exclusive partner. Other direct representation can be found in Germany, Sweden, Denmark, Canada, Poland & the USA. Excel superior quality and at the same time an attractive price, of course, all certifications included ISO 9001 and ISO 14001.



Cat. ID	Description	kg
317013	B plain PVC GRIFFON UNI-100 – 250 ml incl. brush	0,25
317014	B plain PVC GRIFFON UNI-100 – 500 ml incl. brush	0,50

Griffon UNI-100



Cat. ID	Description	kg
317040	B plain PVC GRIFFON WDF-05 fast drying – 250 ml	0,25
317041	B plain PVC GRIFFON WDF-05 fast drying – 500 ml	0,50

Griffon WDF-05



Cat. ID	Description	kg
317050	B Cleaner GRIFFON PVC-C & ABS 125 ml	0,125
317051	B Cleaner GRIFFON PVC-C & ABS 500 ml	0,50
317052	B Cleaner GRIFFON PVC-C & ABS 250 ml	0,25

Cleaner Griffon PVC-C & ABS





Tangit - plain PVC



Cat. ID	Description	kg
313651	B plain Tangit PVC-U 125 g hose	0,125
313652	B plain Tangit PVC-U 250 g incl. brush	0,25
313653	B plain Tangit PVC-U 500 g incl. brush	0,50
313654	B plain Tangit PVC-U 1 000 g incl. brush	1,00

Tangit cleaner PVC & ABS



Cat. ID	Description	kg
313661	B Cleaner Tangit PVC-U/C, ABS - 125 ml	0,125
313662	B Cleaner Tangit PVC-U/C, ABS - 1 000 ml	1,00

Tangit



Cat. ID	Description	kg
313671	B Thread sealing Tangit UNI-LOCK 80 m	0,07