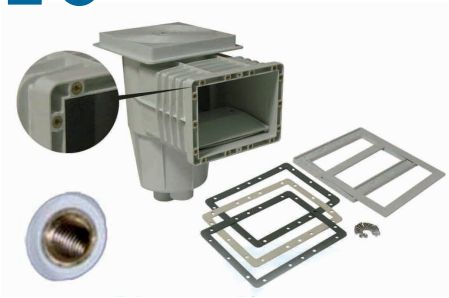
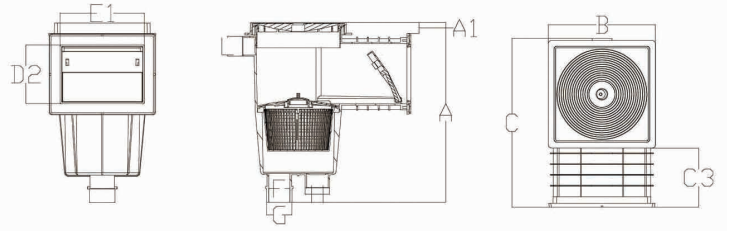


## PROFI 15 I - for liner & pre fabricated pools



Cat. ID	Description	kg
308010	B Skimmer HANSCRAFT PROFI 15 I	2,9

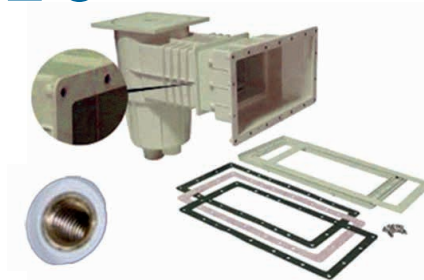
Skimmer with brass coating



Model	A	A1	B	C	C3	D2	E1	F	G	H	L
308010	416.00	25.31	248.90	400.00	137.00	136.00	139.70	1½"	2"	2"	46

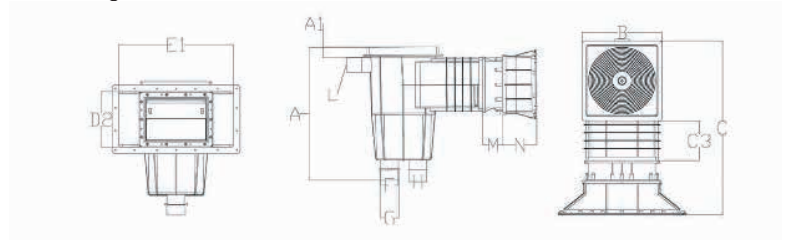
Dimensions are in mm

## PROFI MAXI 15 I - for liner & pre fabricated pools



Cat. ID	Description	kg
308011	B Skimmer HANSCRAFT PROFI MAXI 15 I	4

Skimmer with brass coating



Model	A	A1	B	C	C3	D2	E1	F	G	H	L	M	N
308011	416.00	25.31	248.90	565.00	137.00	172.50	358.00	1½"	2"	2"	46.00	73.00	105

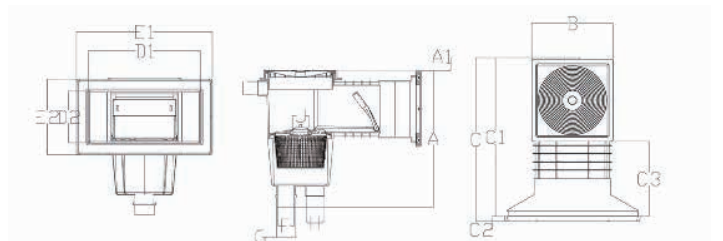
Dimensions are in mm

## PROFI MAXI 15 I wide mouth - for liner & pre fabricated pools



Cat. ID	Description	kg
308015	B Skimmer HANSCRAFT PROFI 15 L wide mouth	

Skimmer with brass coating



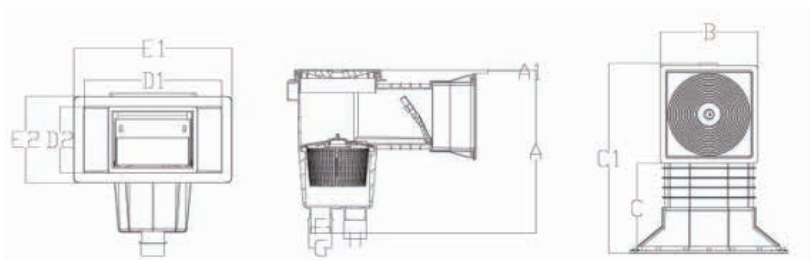
Model	A	B	C	D1	D2	E1	E2	G	F	H	L	J	A1	C1	C2	C3
308015	416.00	241.82	496.94	341.38	156.38	415.00	230.00	2"	1½"	50.00	40.00	49.76	3.40	481.94	15.00	227.34

Dimensions are in mm

### PROFI 15 I wide mouth - for concrete pools



Cat. ID	Description	kg
308014	B HANSCRAFT PROFI 15 L wide mouth - concrete pool	3



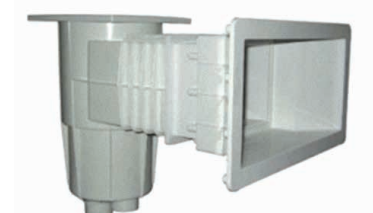
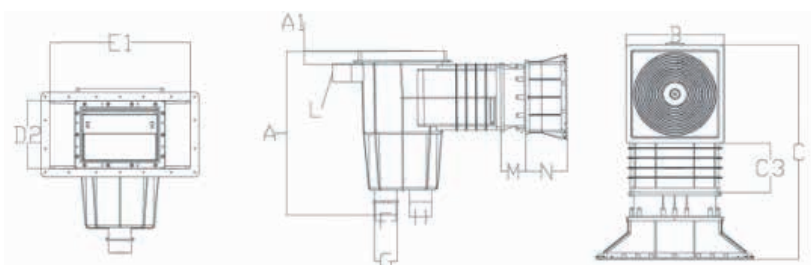
Model	A	A1	B	C	C1	D1	D2	E1	E2	F	G	H
308014	416.00	8.75	249.00	229.60	483.70	352.60	167.30	405.30	220.3	1½"	2"	2"

Dimensions are in mm

### PROFI MAXI 15 I - for concrete pools



Cat. ID	Description	kg
308016	B HANSCRAFT MAXI PROFI 15 L - concrete pool	3,1



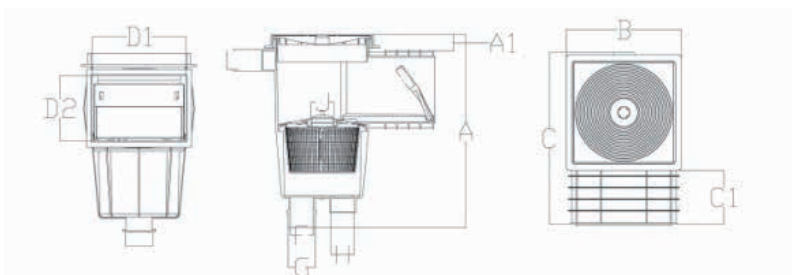
Model	A	A1	B	C	C3	D2	E1	F	G	H	L	M	N
308016	416.00	25.31	248.90	550.00	137.00	172.50	358.00	1½"	2"	2"	46.00	63.00	105

Dimensions are in mm

### PROFI 15 I - for concrete pools



Cat. ID	Description	kg	RRP (EUR)
308012	B Skimmer HANSCRAFT PROFI 15 L - concrete pool	2,8	47,80



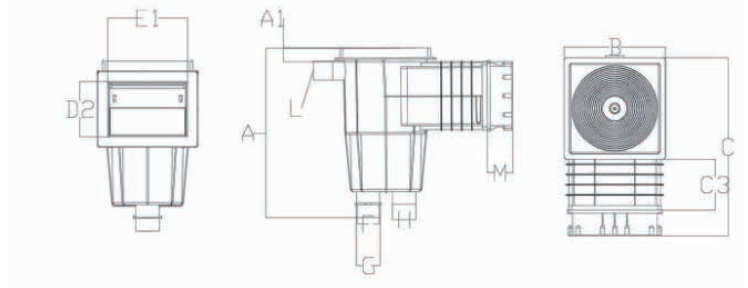
Model	A	A1	B	C	C1	D1	D2	F	G	H	L	J
308012	416.00	36.60	248.90	370.20	156.38	201.70	139.70	1½"	2"	50.00	40.00	49.76

Dimensions are in mm

## PROFI 15 I prolonged - for concrete pools



Cat. ID	Description	kg
308013	B Skimmer HANSCRAFT PROFI 15 L ext. - concrete pool	3



model	A	A1	B	C	C3	D2	E1	F	G	H	L	M
308013	416.00	25.31	248.90	435.00	137.00	136.00	196.00	1½"	2"	2"	46	63

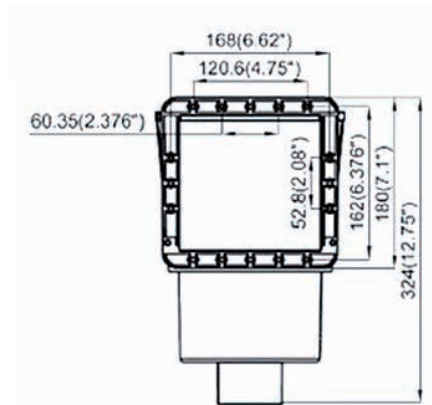
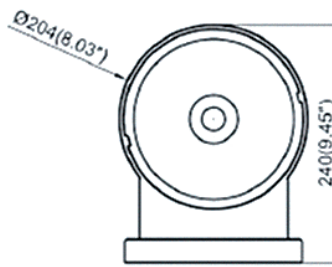
Dimensions are in mm

## STANDARD 15 × 15 - for above ground pools



Cat. ID	Description	kg
308020	B Skimmer HANSCRAFT STANDARD 15 x15	2,3

Included is a nozzle

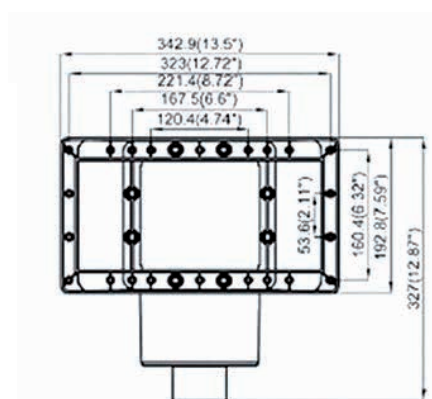
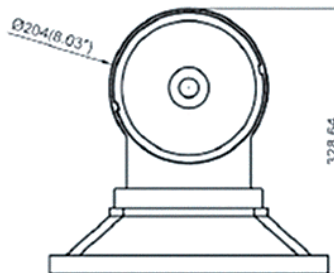


## STANDARD 30 × 15 - for above ground pools



Cat. ID	Description	kg
308021	B Skimmer HANSCRAFT STANDARD 30 x 15	3,4

Included is a nozzle



## Skimmer standard with brass inserts

Cat. ID	Description	kg
308202	B Skimmer standard with brass inserts	3,1

Skimmer for liner – STANDARD. Recommended flow: 5000 l/h, regulation via floating unit. 50 mm diameter and 1.1/2", with brass inserts.



## Skimmer with wide mouth with brass inserts

Cat. ID	Description	kg
308212	B Skimmer with wide mouth with brass inserts	3,2

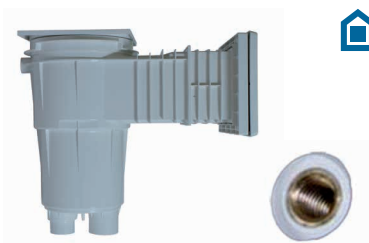
Skimmer for liner – STANDARD. Recommended flow: 5000 l/h, regulation via floating unit. 50 mm diameter and 1.1/2", with brass inserts.



## Skimmer standard with brass inserts - 17,5 l

Cat. ID	Description	kg
308203	B Skimmer standard with brass inserts - 17,5 l	3,2

Skimmer STANDARD for liner with brass inserts  
 – extension 10 cm  
 – capacity 17,5 l



## Skimmer with wide mouth &amp; brass inserts - 6° angle

Cat. ID	Description	kg
308213	B Skimmer with wide mouth with brass inserts - 6° angle	3,4



## Skimmer standard for concrete pools

Cat. ID	Description	kg
308201	B Skimmer standard for concrete pools	3

Skimmer for concrete pools – STANDARD. Recommended flow: 5000 l/h. Regulation via floating unit.



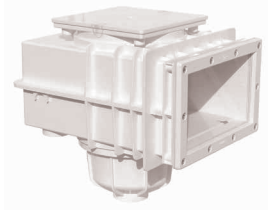
## Skimmer wide mouth for concrete pools

Cat. ID	Description	kg
308211	B Skimmer with wide mouth for concrete pools	3,3

Skimmer for concrete pools – STANDARD. Recommended flow: 5000 l/h. Regulation via floating unit.

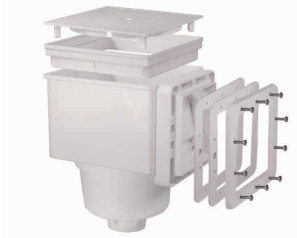


## Skimmer V20 ABS with brass plug for liner 240 x 140



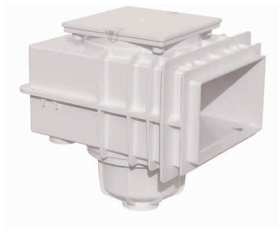
Cat. ID	Description	kg
308303	B Skimmer V20 ABS with brass plug for liner 240 x 140	5,5

## Skimmer V10 ABS with brass plug for liner 142 x 148



Cat. ID	Description	kg
308302	B Skimmer V10 ABS with brass plug for liner 142 x 148	4

## Skimmer V20 ABS 240 x 140 mm for concrete pools - MTS



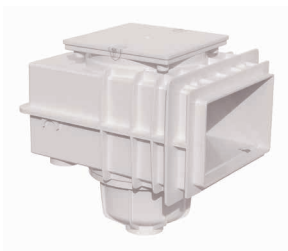
Cat. ID	Description	kg
308301	B Skimmer V20 ABS 240 x 140 mm concrete pools - MTS	4,5

## Skimmer MTS suspended



Cat. ID	Description	kg
308300	B Skimmer MTS suspended	2,6

## Skimmer V20 without Flange



Cat. ID	Description	kg
308304	B Skimmer V20 without Flange	3,4

## Flange for Skimmer V20



Cat. ID	Description	kg
306160	B Flange skimmeru V20 - ABS cream	0,5
306161	B Flange skimmeru V20 - steel	0,9

Cat. ID	Description	kg
308070	B Hose coupler 32 a 38 mm	0,02

## ABS hose coupler



Cat. ID	Description	kg
308270	C Mesh for skimmer basket (standard; 3 pcs/box)	0,01
308272	C Mesh for skimmer basket (standard; 5 pcs/box)	0,01
308271	C Mesh for skimmer basket (large; 3 pcs/box)	0,01

## Mesh for Skimmer Basket



Cat. ID	Description	kg
308140	B Basket for skimmer 15 l	

## Basket for skimmer



Cat. ID	Description	kg
308110	B Skimmer weir door PROFI 15 l	
308111	B Skimmer weir door STANDARD 15 x 15	

## Skimmer weir door



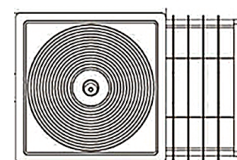
Cat. ID	Description	kg
308130	B Skimmer vacuum plate PROFI 15 l	
308131	B Skimmer vacuum plate STANDARD 15 x 15	

## Skimmer vacuum plate



Cat. ID	Description	kg
308160	B Skimmer lid PROFI & PROFI MAXI	

## Skimmer lid PROFI & PROFI MAXI



Cat. ID	Description	kg
308080	B Skimmer extension PROFI/MAXI 15 l	

## Skimmer extension PROFI / MAXI 15 l



Height: 12,6 cm

## Skimmer vacuum plate



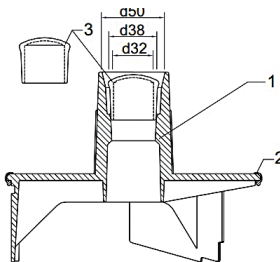
Cat. ID	Description	kg
308132	B Skimmer vacuum plate V10	0,27
308133	B Skimmer vacuum plate V20	0,27

## Basket for skimmer V10/V20/VS30



Cat. ID	Description	kg
308141	B Basket for skimmer V10/V20/VS30	0,03

## Control plate for floor drain skimmer VS30



Cat. ID	Description	kg
306150	B Control plate for floor drain skimmer VS30	0,2

## Nozzle for hose to cleaner 38 mm - MTS



Cat. ID	Description	kg
308071	B Nozzle for hose to cleaner 38 mm - MTS	0,1



Cat. ID	Description	kg
308170	B Level control valve MINI 1/2"	0,15

## Level control valve MINI 1/2"



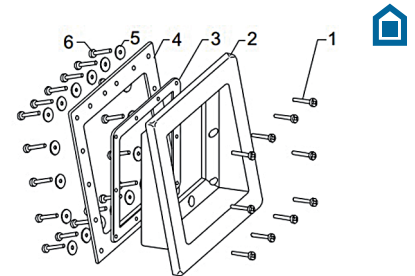
Cat. ID	Description	kg
308081	B Skimmer extension V20 50 mm ABS	0,4

## Skimmer extension V20 50 mm ABS



Cat. ID	Description	kg
306170	B Mouth extension skimmer V20	0,3

## Mouth extension skimmer V20



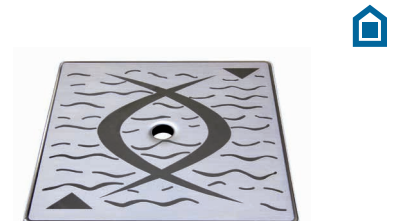
Cat. ID	Description	kg
306140	B Skimmer screen V10 – ABS cream	0,3
306141	B Skimmer screen V10 – ABS white	0,3
306142	B Skimmer screen V20 – ABS cream	0,3
306143	B Skimmer screen V20 – ABS white	0,3
306144	B Skimmer screen V20 – ABS steel casting	0,9

## Skimmer screen



Cat. ID	Description	kg
308162	B Skimmer lid V20/VS30 stainless steel	0,4

## Skimmer lid V20/VS30 steel



## Inlet Nozzle



Cat. ID	Description	kg
308220	B Return Jet with ball 3 sizes 14-20-25 mm	0,25

Inlet Nozzle with ball diameter of 14 mm, 20 mm and 25 mm. Allows several flow rates at installation: D.14 = 3 m<sup>3</sup>/h, D.20 = 5 m<sup>3</sup>/h, D.25 = 7 m<sup>3</sup>/h.

## Inlet Nozzle



Cat. ID	Description	kg
308221	B Return Jet with ball 3 sizes 14-20-25 mm	0,25

Inlet Nozzle with ball diameter of 14 mm, 20 mm and 25 mm. Allows several flow rates at installation: D.14 = 3 m<sup>3</sup>/h, D.20 = 5 m<sup>3</sup>/h, D.25 = 7 m<sup>3</sup>/h.

## Inlet Nozzle



Cat. ID	Description	kg
308222	B Return Jet with ball 3 sizes 14-20-25 mm	0,3

Inlet Nozzle with ball diameter of 14 mm, 20 mm and 25 mm. Allows several flow rates at installation: D.14 = 3 m<sup>3</sup>/h, D.20 = 5 m<sup>3</sup>/h, D.25 = 7 m<sup>3</sup>/h. The additional coating of brass.

## Inlet Nozzle



Cat. ID	Description	kg
308223	B Return Jet with ball 3 sizes 14-20-25 mm	0,3

Inlet Nozzle with ball diameter of 14 mm, 20 mm and 25 mm. Allows several flow rates at installation: D.14 = 3 m<sup>3</sup>/h, D.20 = 5 m<sup>3</sup>/h, D.25 = 7 m<sup>3</sup>/h.

## Inlet Nozzle



Cat. ID	Description	kg
308224	B Return Jet with ball 3 sizes 14-20-25 mm	0,3

Inlet Nozzle with ball diameter of 14 mm, 20 mm and 25 mm. Allows several flow rates at installation: D.14 = 3 m<sup>3</sup>/h, D.20 = 5 m<sup>3</sup>/h, D.25 = 7 m<sup>3</sup>/h. The additional coating of brass.

## Suction Nozzle 1 1/2 "



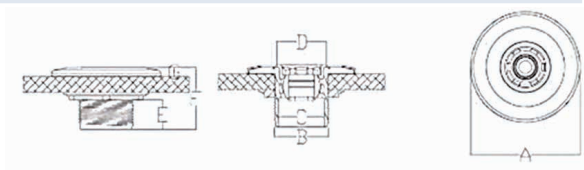
Cat. ID	Description	kg
308230	B Suction Nozzle 1 1/2 "	0,3

Suction Nozzle for concrete pool. Lid 1 1/2 " external thread and an internal diameter of 50 mm.

### Circulation nozzle flat MULTIFLOW



Cat. ID	Description	kg
308030	B Circulation nozzle flat MULTIFLOW	0,25



A	B	C	D	E	F	G
118,90	2"	50,00	53,90	31,72	66,55	9,90

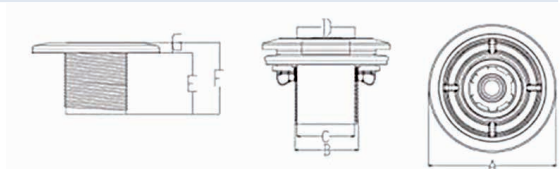
Dimensions are in mm



### Circulation nozzle flat MULTIFLOW PLUS



Cat. ID	Description	kg
308031	B Circulation nozzle flat MULTIFLOW PLUS	0,50



A	B	C	D	E	F	G
118,90	2"	50,00	53,90	56,65	66,55	9,90

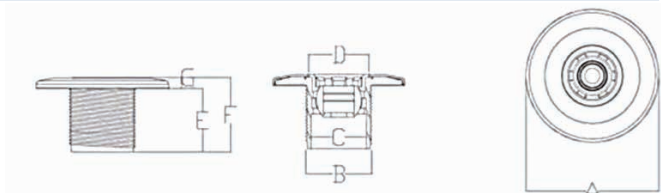
Dimensions are in mm



### Nozzle MULTIFLOW with thread - for concrete pool



Cat. ID	Description	kg
308032	B Nozzle MULTIFLOW - concrete with thread	0,25



A	B	C	D	E	F	G
118,90	2"	50,00	53,90	56,65	66,55	9,90

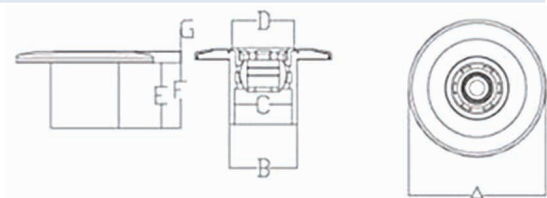
Dimensions are in mm



### Nozzle MULTIFLOW - for concrete pool



Cat. ID	Description	kg	RRP (EUR)
308033	B Nozzle MULTIFLOW- for concrete pool	0,23	7,10



A	B	C	D	E	F	G
118,90	60,00	50,00	53,90	56,65	66,75	9,90

Dimensions are in mm



## Plug for MULTIFLOW circulation jet



Cat. ID	Description	kg
308040	B Plug for circulation jet MULTIFLOW	0,01

## Key for nozzle MULTIFLOW



Cat. ID	Description	kg
308060	B Key for nozzle MULTIFLOW	0,01

## Eyeball jets



Cat. ID	Description	kg
308150	B Eyeball jets	0,01

## Ejector nozzle MULTIFLOW



Cat. ID	Description	kg
308050	B Ejector nozzle MULTIFLOW	0,01

## Lock screw for H50/LED18



Cat. ID	Description	kg
309161	B Lock screw for H50/LED18	0,01



Cat. ID	Description	kg
308215	B Nozzle inlet 8 mm MTS	0,03
308216	B Nozzle inlet 18 mm MTS	0,03
308217	B Nozzle inlet 25 mm MTS	0,03

### Nozzle inlet MTS



Cat. ID	Description	kg
308310	B Nozzle inlet steel 8 mm MTS	0,03
308311	B Nozzle inlet steel 18 mm MTS	0,03
308312	B Nozzle inlet steel 25 mm MTS	0,03

### Nozzle inlet steel MTS



Cat. ID	Description	kg
308320	B Nozzle inlet duo 2 x 8 mm MTS	0,03

### Nozzle inlet duo 2 x 8 mm MTS



Cat. ID	Description	kg
308079	B Air mixing Nozzle - MTS	0,09

### Air mixing Nozzle - MTS



## Basic element 2" 70 mm steel for liner - MTS



Cat. ID	Description	kg
308332	B Basic element for jet 2" 70 mm steel for liner - MTS	0,7

## Basic element 2" 40 mm steel - MTS



Cat. ID	Description	kg
308330	B Basic element for jet 2" 40 mm steel - MTS	0,5

## Basic element 2" 40 mm steel for liner - MTS



Cat. ID	Description	kg
308331	B Basic element for jet 2" 40 mm steel for liner - MTS	0,5

## Basic element 2" 50 x 40 mm - MTS



Cat. ID	Description	kg
308340	B Basic element for jet 2" 50 x 40 mm - MTS	0,08

## Basic element 2" 50 x 70 mm - MTS



Cat. ID	Description	kg
308341	B Basic element for jet 2" 50 x 70 mm - MTS	0,1

## Extension basic element MTS 50 mm



Cat. ID	Description	kg
306200	B Extension Basic element for jet MTS 50 mm	0,05



Cat. ID	Description	kg
308046	B Floor plug transparent 1 1/2 "	0,03

### Floor plug transparent 1 1/2 "



### Closure transparent for basic element MTS

Cat. ID	Description	kg
308044	B Closure transparent for basic elements MTS	0,03



### Closure for basic element MTS

Cat. ID	Description	kg
308043	B Closure for the basic elements MTS	0,03



### Adjustable flow regulator transparent 1/2 "

Cat. ID	Description	kg
308042	B Adjustable flow regulator transparent 1/2 "	0,03



### Adjustable flow regulator R 1 1/2 " - MTS

Cat. ID	Description	kg
308041	B Adjustable flow regulator R 1 1/2 " - MTS	0,03



### Shells inlet transparent 1 1/2 " - MTS

Cat. ID	Description	kg
308045	B Shells inlet transparent 1 1/2 " - MTS	



### Shells inlet transparent ABS 1 1/2 " - MTS

Cat. ID	Description	kg
308047	B Shells inlet ABS 1 1/2 " - MTS	



## Mounting key for MTS jet



Cat. ID	Description	kg
308061	B Mounting key for jets MTS	0,05

## Mounting key multi functional



Cat. ID	Description	kg
308062	B Mounting key multi functional	0,07

## Flange kit with EPDM gasket, steel, 6 x screw



Cat. ID	Description	kg
308051	B Flange kit with EPDM gasket, steel, 6 x screw	0,15

## Flange kit ABS PS 6.6 screw M5 - MTS



Cat. ID	Description	kg
308052	B Flange kit ABS PS 6.6 screw M5 - MTS	0,07

## Flange kit ABS PS 6.6 screws - MTS



Cat. ID	Description	kg
308053	B Flange kit ABS PS 6.6 screws - MTS	0,07

## Cover frame for flange kit MTS White



Cat. ID	Description	kg
308057	B Cover frame for flange kit MTS White	0,01

## Cover frame for flange kit MTS



Cat. ID	Description	kg
308056	B Cover frame for flange kit MTS	0,01



## Floor drain ABS, steel SS316, concrete - MTS



Cat. ID	Description	kg
308254	B Floor drain ABS, steel SS316, concrete - MTS	0,7



## Floor drain ABS, steel SS316, concrete, square



Cat. ID	Description	kg
308255	B Floor drain ABS, steel SS316, concrete, square	0,95



## Floor drain ABS, steel SS316, liner - MTS



Cat. ID	Description	kg
308256	B Floor drain ABS, steel SS316, liner - MTS	0,94



## Floor drain ABS, steel SS316, liner, square



Cat. ID	Description	kg
308257	B Floor drain ABS, steel SS316, liner, square	1,2



## MTS grid ground drain



Cat. ID	Description	kg
308258	B MTS grid ground drain	0,3



## Bottom drain round - out flow 1 1/2 "



Cat. ID	Description	kg
308250	B Bottom drain round - out flow 1 1/2 "	0,6

D.200 circular bottom drain white ABS UV resistant. Drain 1 1/2 ".

## Bottom drain round - out flow 2 " - brass coating



Cat. ID	Description	kg
308251	B Bottom drain round - out flow 2 " - brass coating	0,6

D.200 circular bottom drain white ABS UV resistant. 2 " out flow. For liner. With brass coating.

## Floor drain 1 1/2 "



Cat. ID	Description	kg
308252	B Floor drain 1 1/2 "	0,6

## Floor drain 2 "



Cat. ID	Description	kg
308253	B Floor drain 2 "	0,6

## Floor drain 2 " diameter 170 mm - brass inserts

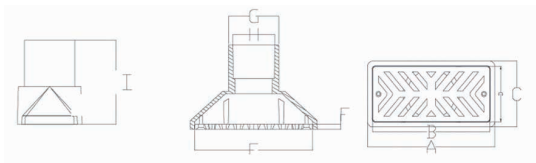


Cat. ID	Description	kg
308259	B Floor drain 2 " diameter 170 mm - brass inserts	0,6

Drain for overflow gutters 50 mm



Cat. ID	Description	kg
308091	B Drains for overflow gutters 50 mm	0,2



A	B	C	D	E	F	G	H	I
152.00	141.00	77.00	66.00	141.00	6.10	60.00	50.00	99.00

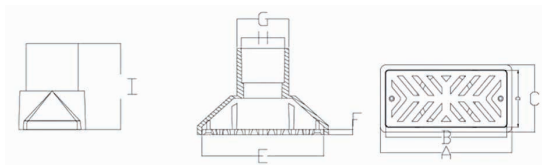
Dimensions are in mm



Drain for overflow gutters 63 mm



Cat. ID	Description	kg
308090	B Drains for overflow gutters 63 mm	0,2



A	B	C	D	E	F	G	H	I
152.00	141.00	77.00	66.00	141.00	6.10	73.00	63.00	99.00

Dimensions are in mm



pool fittings

Cat. ID	Description	kg
308092	B Drain chrome	0,2

Drain chrome



Cat. ID	Description	kg
308093	B Drain white	0,2

Drain white



## Wall passage for pool 2" 50 × 63 × 150 mm MTS



Cat. ID	Description	kg
308244	B Wall passage for pool 2" 50 × 63 × 150 mm MTS	0,15

## Wall passage for pool 2" × 1/2" 50 × 63 × 300 mm MTS



Cat. ID	Description	kg
308245	B Wall passage for pool 2" × 1/2" 50 × 63 × 300 mm MTS	0,19

## Wall passage for pool 2" × 2" 63 × 75 × 300 mm MTS



Cat. ID	Description	kg
308246	B Wall passage for pool 2" × 2" 63 × 75 × 300 mm MTS	0,22

## Wall passage with male thread 50 × 63 × 150 mm MTS



Cat. ID	Description	kg
308247	B Wall passage 50 × 63 × 150 mm MTS	0,15

## Lock nut PA 6.6 with flange EPDM - MTS



Cat. ID	Description	kg
308054	B Lock nut PA 6.6 with flange EPDM - MTS	0,05

## Lock nut PA 6.6 - MTS

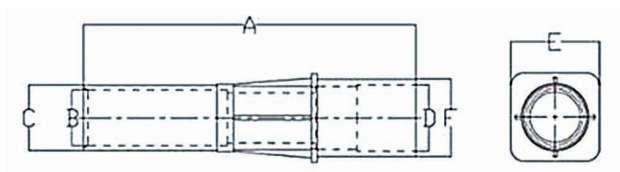


Cat. ID	Description	kg
308055	B Lock nut PA 6.6 - MTS	0,02

## Wall passage ABS 50 mm x 2 with thread/300 mm



Cat. ID	Description	kg
308242	B Wall passage ABS 50 mm x 2 w/thread/300 mm	0,38



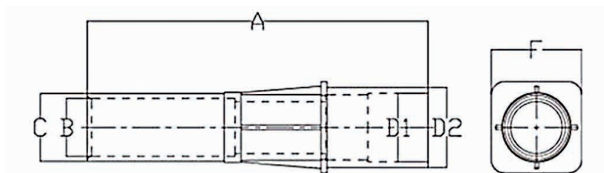
A	B	C	D	E	F
300.00	55.50	2"	2"	80.00	70.00

Dimensions in mm

## Wall passage ABS 50 mm x male 2/300 mm



Cat. ID	Description	kg	RRP (EUR)
308243	B Wall passage ABS 50 mm x male 2/300 mm	0,38	8,20



A	B	C	D1	D2	E
300.00	55.50	2"	60.00	70.00	79.80

Dimensions in mm

## Wall passage 2"- 240 mm



Cat. ID	Description	kg	RRP (EUR)
308240	B Wall passage 2"- 240 mm	0,35	10,20

Wall passage white ABS, 240 mm length (drain pool) and 50 mm (connection pipes), with an internal connection 2" (drain 63 mm outer diameter).



## Wall passage 2"- 265 mm



Cat. ID	Description	kg	RRP (EUR)
308241	B Wall passage 2"- 265 mm	0,34	10,20

Wall passage white ABS, 240 mm length (drain pool) and 50 mm (connection pipes), with an internal connection 2" (drain 63 mm outer diameter). Designed for jets.



# GEMAS CONCRETE SKIMMERS



All skimmer models are made of ABS equipped with "suction regulator" and locking mechanism of basket against back pressure. Skimming by "floating weir".

## Technical data

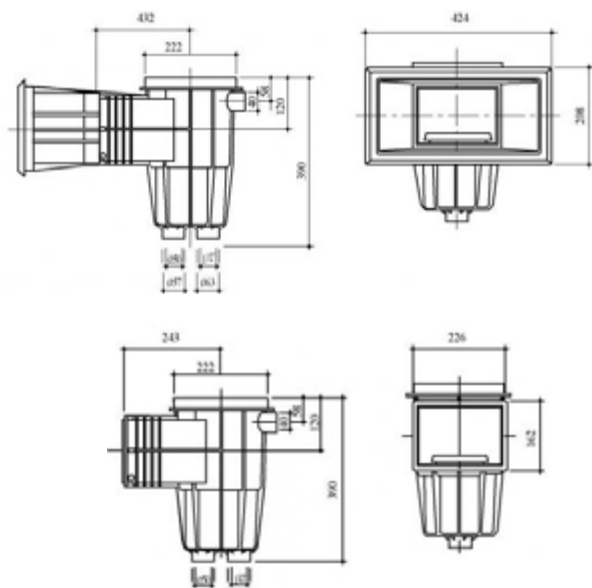
Connection D50 mm / 6/4"

Overflow connection D40 mm

Skim vac

XL Skimmer = Standard mouth skimmer + 10cm extended neck

Recommend flow rate 5 - 7 m<sup>3</sup>/h



## SKIMMERS PARTS



Code	Description	PKG	WGT
011001	C Skimmer STD concrete 6/4 female threaded / D50	1	2,8
011002	C Skimmer Extended Throat concrete XL 6/4 female threaded / D50	1	5,9
011003	C Skimmer Wide Mouth concrete 6/4 female threaded / D50	2	7,5
011201	C Skimer extension	4	0,19
019001	R Skimmer Floating weir	1	0,09
019002	R Skimmer floater concrete-liner	1	0,03
019003	R Skimmer plastic hinge	1	0,01
019004	R Skimmer basket	1	0,07
019005	R Skimmer basket lid for vacuuming	2	0,01
019015	R Skimmer basket handle	1	0,1

# GEMAS LINER SKIMMERS

All skimmer models are made of ABS equipped with "suction regulator" and locking mechanism of basket against back pressure. Skimming by "floating weir". Complete with flange, gaskets, stainless steel screws and front cover. Flange connections can be with brass cavities.

## Technical data

Connection D50 mm / 6/4"

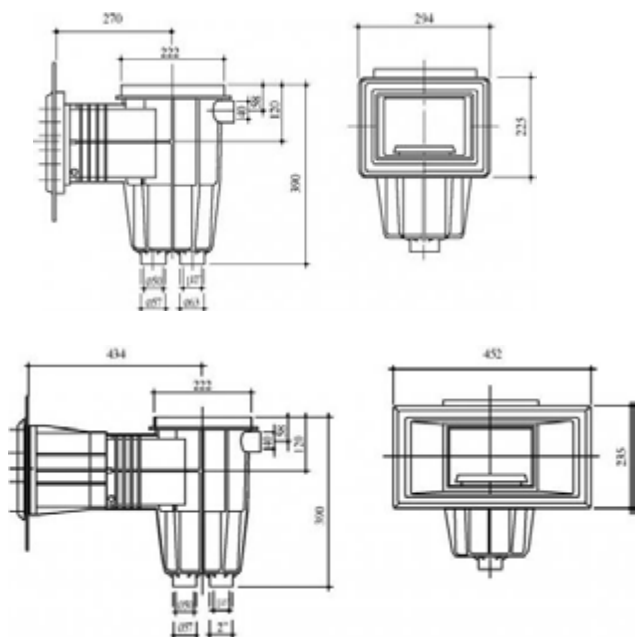
Overflow connection D40 mm

Skim vac

XL Skimmer = Standard mouth skimmer + 10cm extended neck

Recommend flow rate 5 - 7 m<sup>3</sup>/h

M6 x 20 mm screw unit



## LINER SKIMMERS PARTS



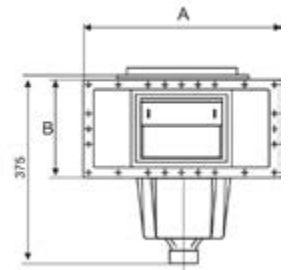
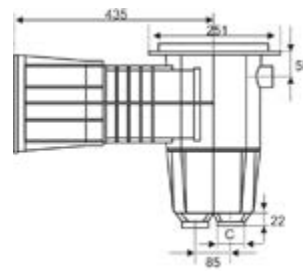
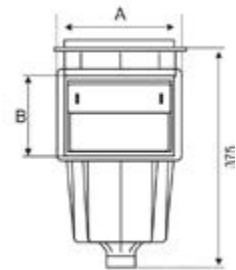
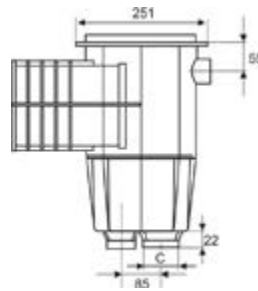
Code	Description	PKG	WGT
011101	C Skimmer STD liner 6/4 female threaded / D50	1	4
011102	C Skimmer STD liner XL 6/4 female threaded / D50	2	8,2
011103	C Skimmer Wide Mouth liner 6/4 female threaded / D50	2	9,1
019008	R Skimmer gasket for STD liner type skimmer; 2 units	1	0,16
019009	R Skimmer outer frame for STD liner type skimmer	1	0,34
019010	R Skimmer Inner frame for liner type skimmer STD	1	0,09
019011	R Skimmer gasket for wide throat liner type skimmer; 2 units	1	0,35
019012	R Skimmer outer frame for wide throat liner type	1	0,44
019013	R Skimmer inner frame for wide throat liner type skimmer	1	0,11
019014	R Skimmer inox screw for brass females M6 x 20mm; 16 units	1	0,2

# WP 15L SKIMMERS

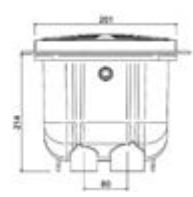
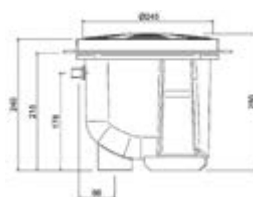


WP 15L skimmers for polyester or liner, made of white injected ABS, this material cannot be altered by chemical and atmospheric agents. Round lid mounted on square or circular frame. Models with inserts and screw in stainless steel 303, special for all kind of reinforced liner. Height can be adjusted by means of vertical extension.

- Inlet connection: 63 mm.
- Recommended flow rate: 7.500 l/h.
- Overflow connection: Ø 40 mm.



Code	Description	PKG	WGT
014101	C Skimmer WP STD concrete 6/4 female threaded / D50		
014102	C Skimmer WP Wide Mouth concrete 6/4 female threaded / D50		
014103	C Skimmer WP STD liner 6/4 female threaded / D50		
014104	C Skimmer WP Wide Mouth liner 6/4 female threaded / D50		
014105	C Skimer WP extension		



Code	Description	PKG	WGT
011202	C Level regulator	1	1,6
012205	C Aquamax Level Regulator	1	2,7

# AQUAMAX SKIMMERS



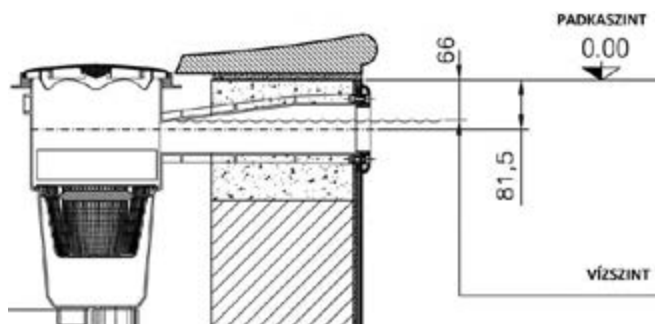
## Technical data

Connection D50 mm / 6/4"

Overflow connection D25/32 mm

Recommended flow rate 10-15 m3/h

AQUAMAX high quality skimmers, suitable for concrete, polyester or liner pools for both private and public use. Made of ABS plastic, equipped with square shaped lid. Fixing of liner version's frame by AISI 316 M6 stainless steel screws.

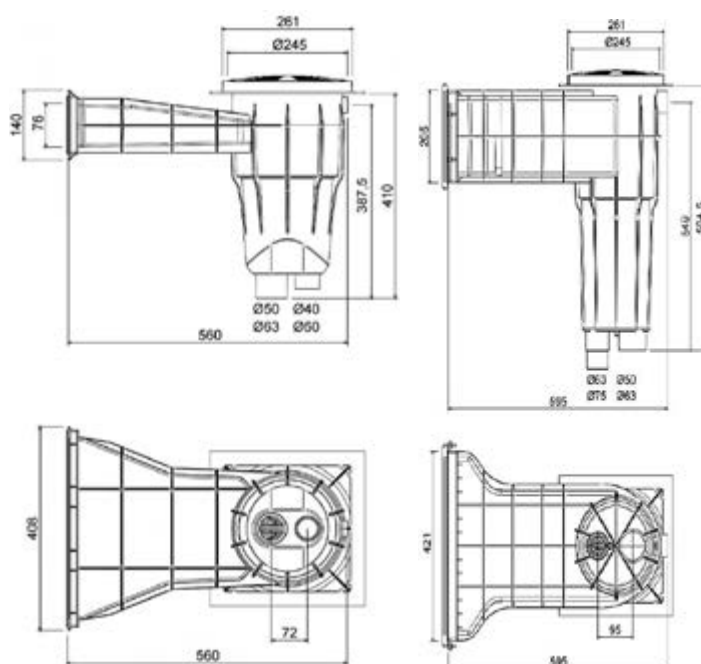


## Technical data

Connection D75/63/50

Overflow connection D40/50 mm

Recommended flow rate 10-22 m3/h



Code	Description	PKG	WGT
012201	C Skimmer, Aquamax straight overflow for concrete pools	1	4,5
012202	C Skimmer, Aquamax classic for concrete pools	1	7,0
012203	C Skimmer, Aquamax straight overflow for liner pools	1	4,6
012204	C Skimmer, Aquamax classic for liner pools	1	6,0

# OLYMPIC AND MTS SKIMMERS



Code	Description	PKG	WGT
010001	C Olympic Skimmer	8	3,1
010021	C Olympic Wide Skimmer	8	3,1
010002	C Olympic Skimmer weir with foam	50	0,1
010003	C Olympic Skimmer basket	24	0,1
010004	C Olympic Skimmer vacuum plate	24	0,1
010005	C Olympic Skimmer gasket	144	0,1
010006	C Olympic Skimmer standard face plate	144	0,1
010012	C Olympic Skimmer cover	50	0,1



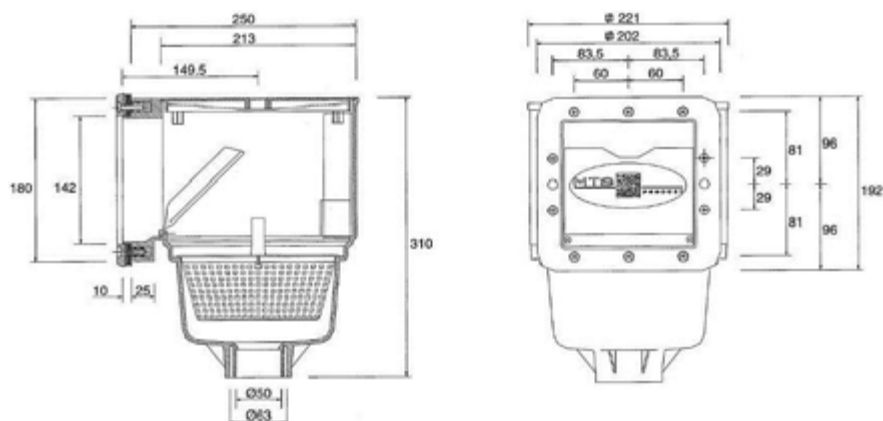
## Technical data

Connection D63/50

Overflow connection D32 mm

Advised flow rate 5-7 m3/h

M5 x 20 mm AISI 316 screw kit



Code	Description	PKG	WGT
013100	C V10 Skimmer for concrete 50/63 mm		
013101	C V10 Skimmer cover 222 x 212 mm		
013102	C V10 Skimmer for liner 50/63 mm		

# NOZZLES



Code	Description	PKG	WGT
011501	C Inlet concrete 2" Male Threaded Ø50mm	10	0,1
011502	C Inlet concrete 2" slip Ø63mm	10	0,1
011506	C Inlet WP concrete 2" Male Threaded		
012206	C Inlet Aquamax for concrete pool	1	0,22
011503	B Inlet concrete 2" Male threaded, SS frame - AISI316	2	0,42
011505	A Inlet nozzle external thread 2" with anadjustable ball 40 mm		



Code	Description	PKG	WGT
011601	C Inlet liner 2" male threaded	8	0,5
011602	C Inlet liner 2" male threaded clamping ring	8	0,6
011603	C Inlet liner Kripsol 2" male threaded	1	0,43
013601	C Inlet liner FF, PP, Olympic	50	0,12
011507	C Inlet WP liner 2" Male Threaded		
011508	C Inlet WP prefabricated pool 2" Male Threaded		
012207	C Inlet Aquamax for liner pool	1	032
011604	C Wall Conduit-Inlet for Liner Pools		
011504	B Inlet liner 2" male threaded, SS frame - AISI316		



Code	Description	PKG	WGT
011902	C Wall conduit 2" female threaded / D50 protection caps	20	0,46
011903	C Wall conduit Kripsol 2" female threaded / D50	1	0,25
012208	C Wall conduit Aquamax with cap	1	0,46

# WHITE GOODS



Code	Description	PKG	WGT
018006	C Floor inlet ABS regulable D63 PN10	100	0,2
018001	A Inlet, floor Inox fixed, conical AISI 304 D63	1	
018002	A Inlet, floor Inox fixed, conical AISI 316 D63	1	
018003	A Inlet, floor Inox regulated AISI 304 D63	1	
018016	C Floor inlet ABS regulable 2"/D50 for liner	6	0,8
018018	C Floor inlet WP for liner, 2" adjustable		
018017	A Floor inlet for liner, 2" - AISI316		



Code	Description	PKG	WGT
011801	C Suction nozzle 2" male theaded	10	0,9
011802	C Suction nozzle D63 PN10	10	0,9
011803	B Suction nozzle concrete 2" Male threaded, SS frame - AISI316	1	0,3
011804	B Suction nozzle liner 2" Male threaded, SS frame - AISI316	1	0,9



Code	Description	PKG	WGT
010007	C Plug 1 1/2" flat	50	0,03
010008	C Plug threaded 1 1/2"	50	0,03
010009	C Plug threaded 2"	100	0,04



Code	Description	PKG	WGT
010010	C Octagonal nut Basic 2"	50	0,03
010013	C Octagonal nut Gemas 2"	50	0,03

# MASSAGE SUPPLIES



Code	Description	PKG	WGT
011701	C Poly Jet Body Assembly D32 air x D32 water	1	0,3
011702	C Poly Jet Body – D50 water x D20 air	1	0,19
011703	C Poly jet gasket for liner	1	0,01
011704	C Poly jet gasket KIT for liner	1	0,11
011705	C Poly jet inox cover	1	0,04



Code	Description	PKG	WGT
011706	C Poly jet internal adjustable	1	0,09
011707	C Poly jet adjustable - STRAIGHT	1	0,06
011708	C Poly jet adjustable - ROTO	1	0,09
011709	C Poly jet wrench, test & winterizing plug	1	0,08



Code	Description	PKG	WGT
018254	B Air regulator, white 5/4"	1	0,05
018354	B Air regulator, chrome 5/4"	1	0,05
011710	C Air nozzle		



Code	Description	PKG	WGT
010011	C Grate 1 1/2" mip	50	0,04
011870	C Suction inlet for concrete Ø162mm - max 45m3/h, D63 - 2 1/2"	1	0,22
011871	C Suction inlet for liner Ø162mm - max 45m3/h, D63 - 2 1/2"	1	0,41

# MAIN DRAINS FOR CONCRETE



Circular and squared main drain for concrete pools. Made of ABS plastic. Grille fixed w/stainless steel screws, Ø50 mm female slip blind connection at the bottom for hydrostatic valve connection.

### Technical data

Connection D63, 75, 90

Lid 200 x 200 mm

Max. 15 m<sup>3</sup>/h

### Technical data

Connection D50, 63, 75

Lid 200 mm

Max. 15 m<sup>3</sup>/h

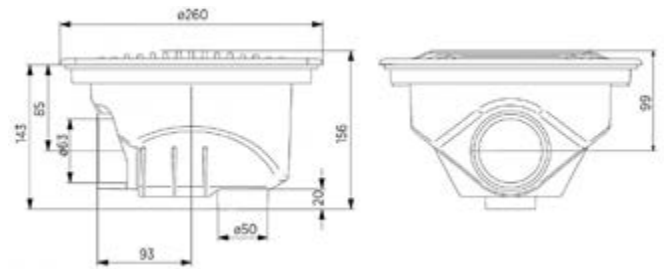
Code	Description	PKG	WGT
011301	C Main Drain Squared Ø 63 mm Slip Connection	1	1,4
011302	C Main Drain Squared Ø 75 mm Slip Connection	1	1,4
011303	C Main Drain Squared Ø 90 mm Slip Connection	1	1,4
011304	C Main Drain Circular for Concrete Pools Ø 50 mm Slip Connection	1	0,78
011305	C Main Drain Circular for Concrete Pools Ø 63 mm Slip Connection	1	0,78
011306	C Main Drain Circular for Concrete Pools Ø 75 mm Slip Connection	1	0,78

## AQUAMAX MAIN DRAINS

Main drain Aquamax for public and private concrete pools with anti-vortex grid in ABS h150 x 250x250mm D.63F – 75 M

Flow rate at surface suction speed 28.11 m<sup>3</sup>/h - speed 0.5 m/s

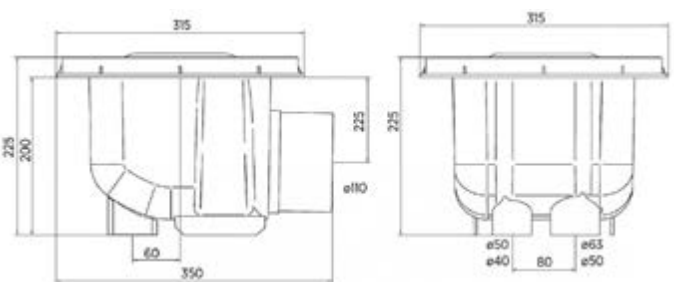
Flow rate at surface suction speed 16.86 m<sup>3</sup>/h - speed 0.3 m/s



Main drain Aquamax for public and private concrete pools with anti-vortex grid in ABS 315x315 D.110F – 125 M

Flow rate at surface suction speed 52.71 m<sup>3</sup>/h - speed 0.5 m/s

Flow rate at surface suction speed 31.62 m<sup>3</sup>/h - speed 0.3 m/s



Code	Description	PKG	WGT
011310	C Main drain Aquamax with anti-vortex grid in ABS 250x250mm D.63F – 75 M for concrete	1	2
011311	C Main drain Aquamax with anti-vortex grid in ABS 315x315 D.110F – 125 M for concrete	1	3

# MAIN DRAIN FOR LINER

Circular and squared main drain for concrete pools. Made of ABS plastic. Grille fixed w/stainless steel screws, Ø50 mm female slip blind connection at the bottom for hydrostatic valve connection.



### Technical data

Connection 2" BM  
Lid 186,5 mm  
Max. 13 m3/h



### Technical data

Connection 1 1/2", 2", 3" BM  
Lid 200 x 200 mm  
Max. 15 m3/h



### Technical data

Connection 2" BM  
Lid 200 mm  
Max. 15 m3/h



### Technical data

Connection 1 1/2", 2" BM  
Lid 244 mm  
Max. 15 m3/h

Code	Description	PKG	WGT	Net Pr.	Gross Pr.
011400	C Main drain for Liner Pools, Kripsol 2"	1	3,5	33,19 €	
011401	C Main Drain Squared 2"	1	1,3	26,88 €	
011402	C Main Drain Squared 2 1/2"	1	1,3	27,00 €	
011403	C Main Drain Squared 3"	1	1,3	27,00 €	
011404	C Main drain for Liner Pools Ø200mm 6/4"	1	1	16,32 €	
011405	C Main drain for Liner Pools Ø200mm 2"	1	1,1	16,32 €	
011406	C Main drain for Liner Pools Ø244mm 6/4"	1	1,3	16,51 €	
011407	C Main drain for Liner Pools Ø244mm 2"	1	1,3	16,51 €	

# AQUAMAX MAIN DRAINS



Main drain Aquamax for public and private liner pools with anti-vortex grid.

Flow rate at surface suction speed 28.11 m3/h - speed 0.5 m/s

Flow rate at surface suction speed 16.86 m3/h - speed 0.3 m/s



Main drain Aquamax for public and private liner pools with anti-vortex grid.

Flow rate at surface suction speed 52.71 m3/h - speed 0.5 m/s

Flow rate at surface suction speed 31.62 m3/h - speed 0.3 m/s



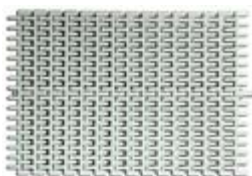
Made with polyester of fiberglass reinforced. Stainless steel (AISI304L) square grating of 355 x 355mm. Flow rate according to EN 13451-1 standard. Flow rate ids 40m3/h.

Code	Description	PKG	WGT
011410	C Main drain Aquamax Ø258mm D.63F – 75 M for liner	1	2
011411	C Main drain Aquamax with anti-vortex grid in ABS 315x315 D.110F – 125 M for PVC lining	1	3
011322	A Main drain made with FRP, SS grating, 355x355 D.110F for concrete	1	4,2
011422	A Main drain made with FRP, SS grating, 355x355 D.110F for PVC lining	1	4,5

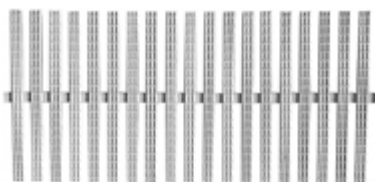
# OVERFLOW GRATING



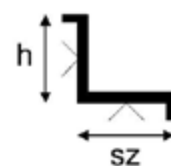
Code	Description	PKG	WGT
013020	C Overflow Grating Gemas Square 200mm	10	1,3
013025	C Overflow Grating Gemas Square 250mm	10	1,6



Code	Description	PKG	WGT
014020	C Overflow Grating Single Joint flexible Rice 195mm	10	1,34
014025	C Overflow Grating Single Joint flexible Rice 245mm	10	1,78



Code	Description	PKG	WGT
014115	C Overflow Gratings Single Joint 145mm	10	1
014120	C Overflow Gratings Double Joint 195mm	10	1,34
014125	C Overflow Gratings Double Joint 245mm	10	1,68
014130	C Overflow Gratings Double Joint 300mm	5	2,38

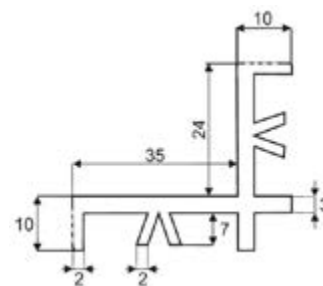


Code	Description	PKG	WGT
014815	C Overflow Corner Tiles 45° 145mm	50	0,16
014820	C Overflow Corner Tiles 45° 195mm	50	0,24
014825	C Overflow Corner Tiles 45° 245mm	30	0,38
014830	C Overflow Corner Tiles 45° 300mm	20	0,55
014915	C Overflow Corner Tiles 90° 145mm	30	0,22
014920	C Overflow Corner Tiles 90° 195mm	25	0,34
014925	C Overflow Corner Tiles 90° 245mm	20	0,5
014930	C Overflow Corner Tiles 90° 300mm	25	0,75
014000	C Overflow Grating Profile 24 x 26mm 2m/pcs	100	0,21

# OVERFLOW GRATING



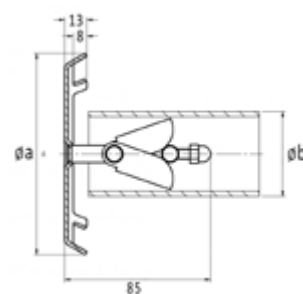
Code	Description	PKG	WGT
013120	B Overflow Grating Gemas Square - Transparens 200mm	10	1,3
013125	B Overflow Grating Gemas Square - Transparens 250mm	10	1,6
013220	B Overflow Corner Tiles Square - Transparens 45° 195mm	10	0,16
013225	B Overflow Corner Tiles Square - Transparens 45° 245mm	10	0,24
013320	B Overflow Corner Tiles Square - Transparens 90° 195mm	10	13
013325	B Overflow Corner Tiles Square - Transparens 90° 245mm	10	13



Code	Description	PKG	WGT
015001	C Overflow Gratings WP Double Joint 195mm		
015002	C Overflow Gratings WP Double Joint 245mm		
015003	C Overflow Corner Tiles WP 90° 195mm		
015004	C Overflow Corner Tiles WP 90° 245mm		
015005	C Overflow Grating Profile WP 24 x 35mm 2m/pcs		



# SUCTION INLET



m3/h	a	b
15	120	50-63
25	165	50-63
40	240	63-75



Code	Description	PKG	WGT
011870	C Suction inlet for concrete Ø162mm - max 45m3/h, D63 - 2 1/2"	1	0,22
011871	C Suction inlet for liner Ø162mm - max 45m3/h, D63 - 2 1/2"	1	0,41
109000	A Suction inlet D50-63 AISI 316 15m3/h for concrete		
109001	A Suction inlet D50-63 AISI 316 25m3/h for concrete		
109002	A Suction inlet D63-75 AISI 316 40m3/h for concrete		
109003	A Suction inlet D50-63 AISI 316 15m3/h for liner		
109004	A Suction inlet D50-63 AISI 316 25m3/h for liner		
109020	A Suction nozzle for water intake 1 1/2" for foil pools		
109021	A Suction nozzle for water intake 1 1/2" for tiled pools		
109022	A Suction nozzle for water intake 2" for foil pools		
109023	A Suction nozzle for water intake 2" for tiled pools		
109024	A Suction nozzle for water intake 2 1/2" for foil pools		
109025	A Suction nozzle for water intake 2 1/2" for tiled pools		
109026	A Suction nozzle for water intake 3" for foil pools		
109027	A Suction nozzle for water intake 3" for tiled pools		
109028	A Suction nozzle for water intake 4" for foil pools		
109029	A Suction nozzle for water intake 4" for tiled pools		