

THREE SPEEDS SINGLE PHASE CIRCULATING PUMP

SPERONI

SCRFE

Applications

The SPERONI SCRFE circulators for clean liquids, without abrasives, which are non-aggressive for the pump materials (contents of solids up to 0.2%). For heating, conditioning, cooling and circulation plants. For civil and industrial applications. When low noise operation is required.

Limits of application

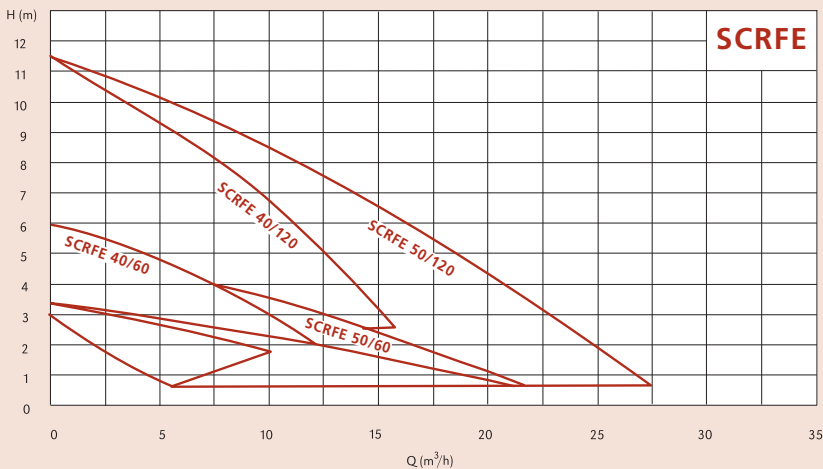
- Liquid temperature from -10 °C to +120 °C (in short-time duty up to + 140 °C).
- Ambient temperature up to 40 °C.
- Maximum glycol quantity: 50% (Mixture with more than 20% glycol content require rechecking of the pumping data).
- Maximum permissible working pressure 6/10 bar.

Motor

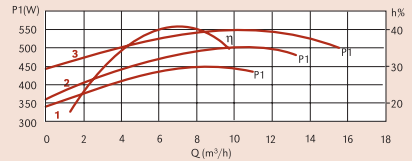
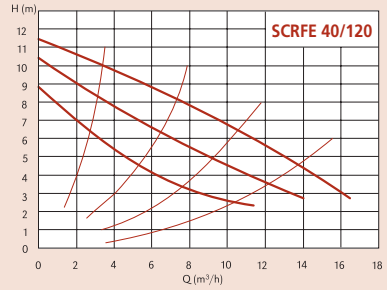
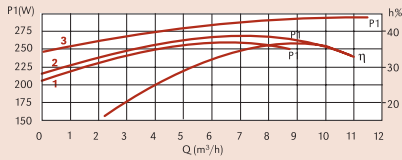
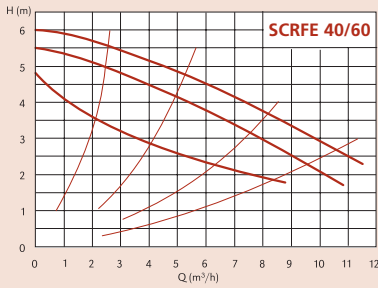
- 2/4 pole induction motor, 50 Hz.
- Three adjustable speeds.
- SCRFE: single-phase 230 V.
- Insulation class F.
- Protection IP 43.

Components

- Pump casing Cast iron
- Impeller Stainless steel
- Shaft Stainless steel

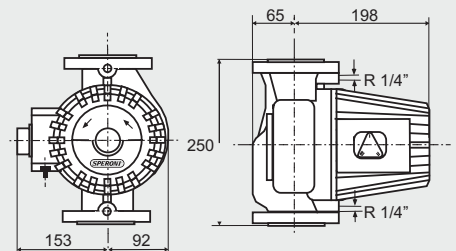


SCRFE 40

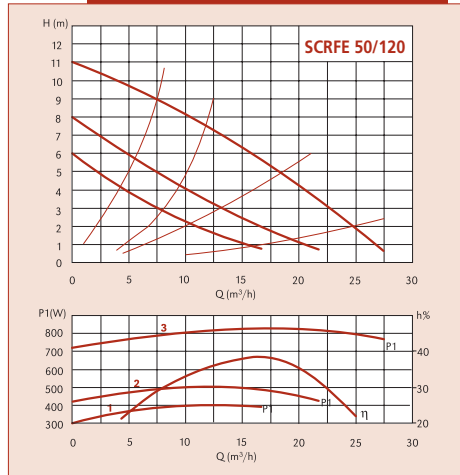
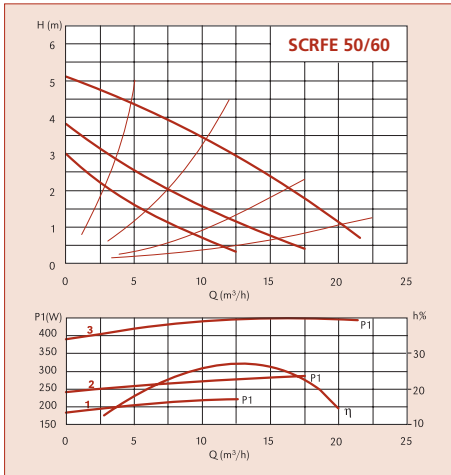


DIMENSIONS AND WEIGHTS

| TYPE | DN | N _i Pole | | Pos. | 1/min | P1 (W) | 3x 400 V [A] | [kg] |
|------------------|----|---------------------|---|------|-------|--------|--------------|------|
| | | 2 | 4 | | | | | |
| SCRFE 40-60/250 | 40 | ✓ | | 3 | 2690 | 285 | 1,20 | 17,5 |
| | | | | 2 | 2360 | 245 | 1,18 | |
| | | | | 1 | 1820 | 225 | 1,15 | |
| SCRFE 40-120/250 | 40 | ✓ | | 3 | 2750 | 550 | 2,35 | 19,0 |
| | | | | 2 | 2100 | 475 | 2,30 | |
| | | | | 1 | 1270 | 355 | 1,85 | |



SCRFE 50



DIMENSIONS AND WEIGHTS

| TYPE | DN | N _i Pole | | Pos. | 1/min | P1 (W) | 3x 400 V [A] | [kg] |
|------------------|----|---------------------|---|------|-------|--------|--------------|------|
| | | 2 | 4 | | | | | |
| SCRFE 50-60/280 | 50 | ✓ | | 3 | 1260 | 415 | 1,8 | 24,5 |
| | | | | 2 | 1030 | 300 | 1,3 | |
| | | | | 1 | 740 | 230 | 1,0 | |
| SCRFE 50-120/280 | 50 | ✓ | | 3 | 2720 | 830 | 3,6 | 24,5 |
| | | | | 2 | 1870 | 480 | 2,1 | |
| | | | | 1 | 1450 | 390 | 1,7 | |

