

SCR



Applications

The threaded Speroni circulators assure the best technical and economic performances and they are able to solve all specific problems in every plants, thanks to their technological construction innovations.

Single phase circulators are perfect for single or collective plants of residences, sporting building, hospitals, greenhouses, etc

Particularly suitable for heating and conditioning plants, for water circulation in heating system and sanitary warm water system, with water hardness less than 30°F.

Limits of application

- Pressure rating 5,5 bar
- Working max pressure NP 10bar
- Delivery 3,5m/h
- Temperature liquid up to 110° C
- Recommended temperature 65° C
- Continuous service

Motor

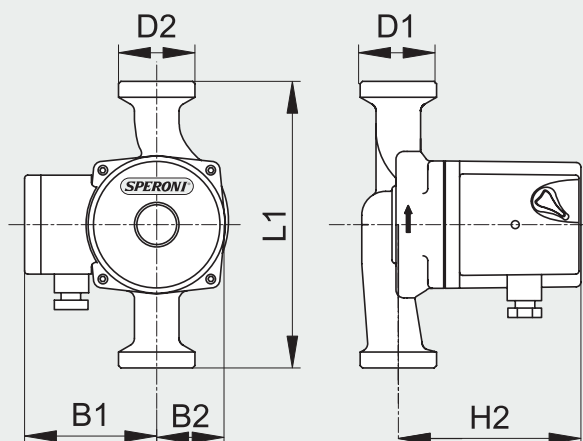
- Electric motor
- Isolation class F
- Protection IP 44

Components

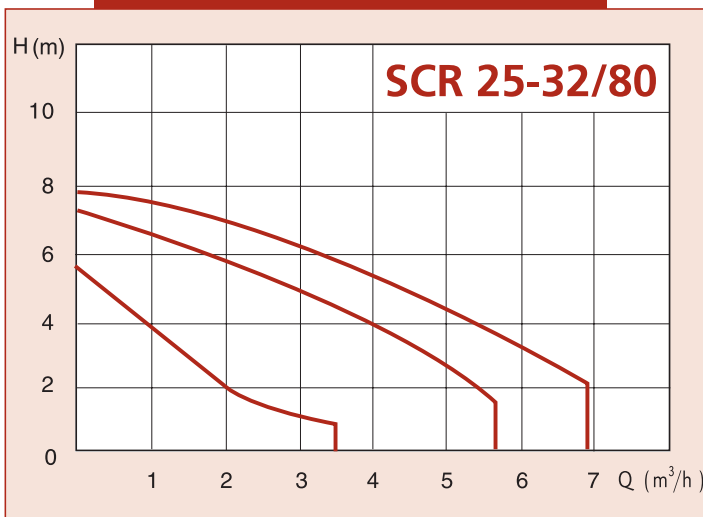
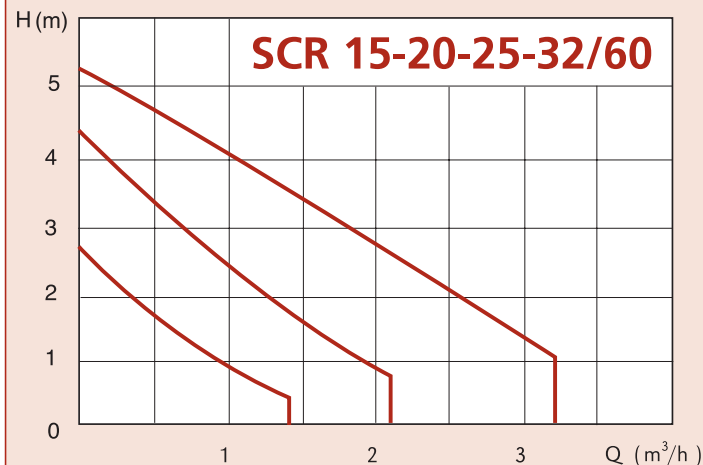
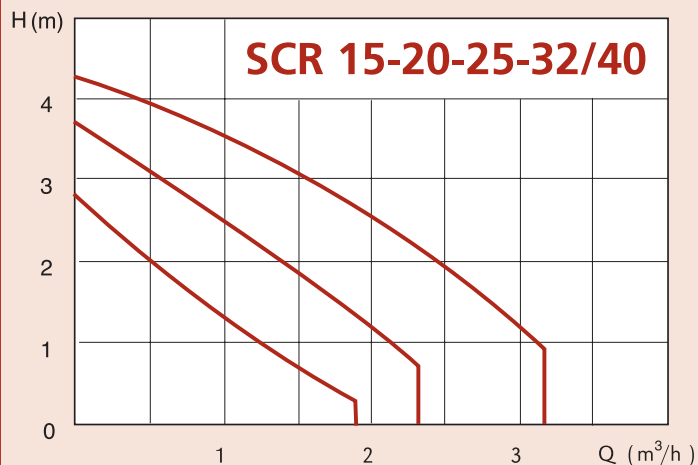
- Pumps body in cast iron GG25
- Synthetic Impeller (polymer)
- Shaft in ceramics
- Ball bearing in ceramics
- Trust bearing
- Rotor with Stainless steel housing
- Winding copper wire
- Gasket in EPDM

DIMENSIONS AND WEIGHTS

TYPE	DN	D1	D2	L1	B1	B2	H2	Kg
SCR 15/40-130	15	1/2"	1"	130	84	43	117	2,3
SCR 15/60-130	15	1/2"	1"	130	84	43	117	2,3
SCR 20/40-130	20	3/4"	1" 1/4	130	84	43	117	2,3
SCR 25/40-130	25	1"	1" 1/2	130	84	43	117	2,3
SCR 20/60-130	20	3/4"	1" 1/4	130	84	43	117	2,3
SCR 25/60-130	25	1"	1" 1/2	130	84	43	117	2,3
SCR 25/80-130	25	1"	1" 1/2	130	84	43	117	2,6
SCR 32/80-130	32	1" 1/4	2"	130	84	43	117	2,6
SCR 20/40-180	20	3/4"	1" 1/4	180	84	43	117	2,5
SCR 25/40-180	25	1"	1" 1/2	180	84	43	117	2,5
SCR 32/40-180	32	1" 1/4	2"	180	84	43	117	2,5
SCR 20/60-180	20	3/4"	1" 1/4	180	84	43	117	2,5
SCR 25/60-180	25	1"	1" 1/2	180	84	43	117	2,5
SCR 32/60-180	32	1" 1/4	2"	180	84	43	117	2,5
SCR 25/80-180	25	1"	1" 1/2	180	84	43	117	2,8
SCR 32/80-180	32	1" 1/4	2"	180	84	43	117	2,8



SCR



Type	DN	Pos.	(min-1)	P1 (W)	1x230 V (A)
SCR 15/40-130	15	1	1315	39	0,17
		2	1723	60	0,26
		3	2456	69	0,30
SCR 15/60-130	15	1	1080	39	0,17
		2	1396	62	0,27
		3	1980	80	0,35
SCR 20/40-130	20	1	1315	39	0,17
		2	1723	60	0,26
		3	2456	69	0,30
SCR 25/40-130	25	1	1315	39	0,17
		2	1723	60	0,26
		3	2456	69	0,30
SCR 20/60-130	20	1	1080	39	0,17
		2	1396	62	0,27
		3	1980	80	0,35
SCR 25/60-130	25	1	1080	39	0,17
		2	1396	62	0,27
		3	1980	80	0,35
SCR 25/80-130	25	1	1080	122	0,53
		2	1396	158	0,69
		3	1980	172	0,75
SCR 32/80-130	32	1	1080	122	0,53
		2	1396	158	0,69
		3	1980	172	0,75
SCR 20/40-180	20	1	1315	39	0,17
		2	1723	60	0,26
		3	2456	69	0,30
SCR 25/40-180	25	1	1315	39	0,17
		2	1723	60	0,26
		3	2456	69	0,30
SCR 32/40-180	32	1	1315	39	0,17
		2	1723	60	0,26
		3	2456	69	0,30
SCR 20/60-180	20	1	1080	69	0,17
		2	1396	62	0,26
		3	1980	80	0,30
SCR 25/60-180	25	1	1080	39	0,17
		2	1396	62	0,27
		3	1980	80	0,35
SCR 32/60-180	32	1	1080	39	0,17
		2	1396	62	0,27
		3	1980	80	0,35
SCR 25/80-180	25	1	1080	122	0,53
		2	1396	158	0,69
		3	1980	172	0,75
SCR 32/80-180	32	1	1080	122	0,53
		2	1396	158	0,69
		3	1980	172	0,75