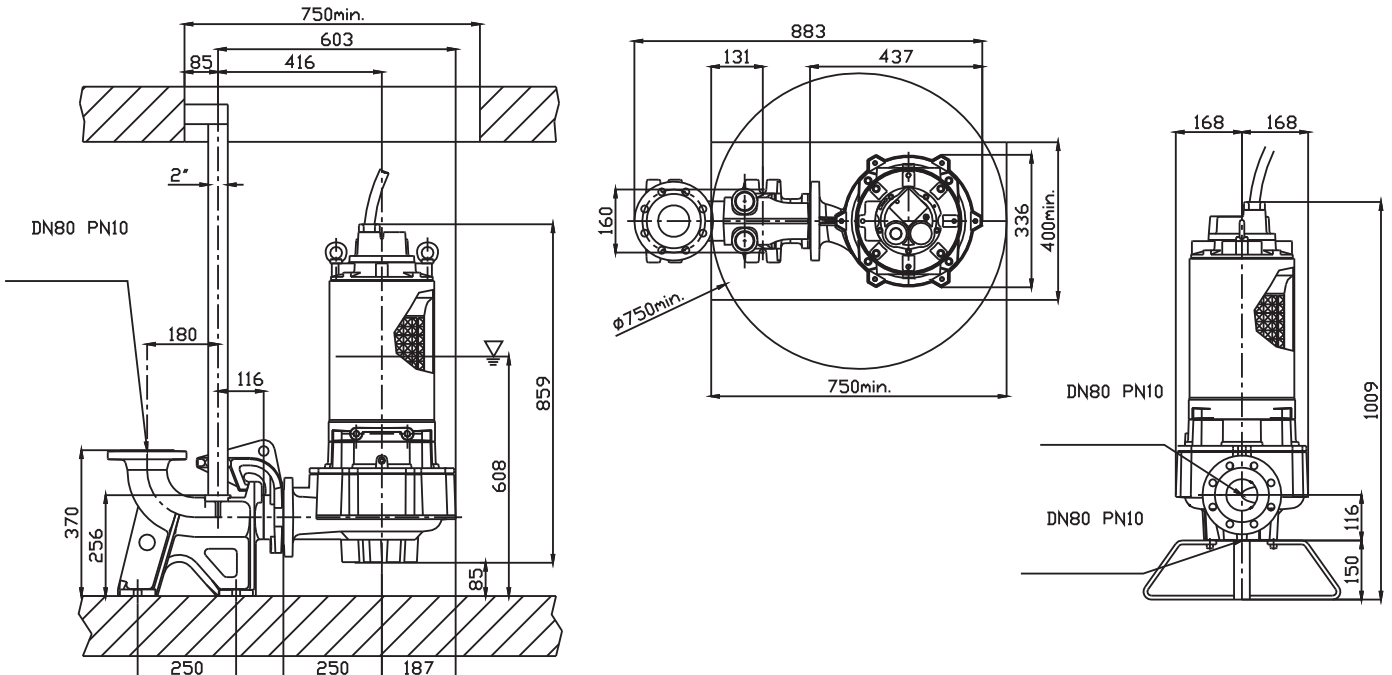


Napajanje	3ph 400/690V 50Hz
R.P.M.	2850
Slobodni prolaz (mm)	40
Izlaz (mm)	DN 80
Masa (Kg)	190

Krivulja N°	Code	Tip pumpe	MOTOR			ATEX code
			Nomin. snaga P2 (kW)	Nomin. struja I (A)	Startna struja Is (A)	
1	7001170	G213R1M1-M40AA2	18,2	34	194	7007466
2	7009292	G213R1M5-M40AA2	18,2	34	194	7007468
3	7008358	G213R1M2-M40AA2	13,8	29,5	174	7007465
4	7009030	G213R1M3-M40AA2	13,8	29,5	174	7007467

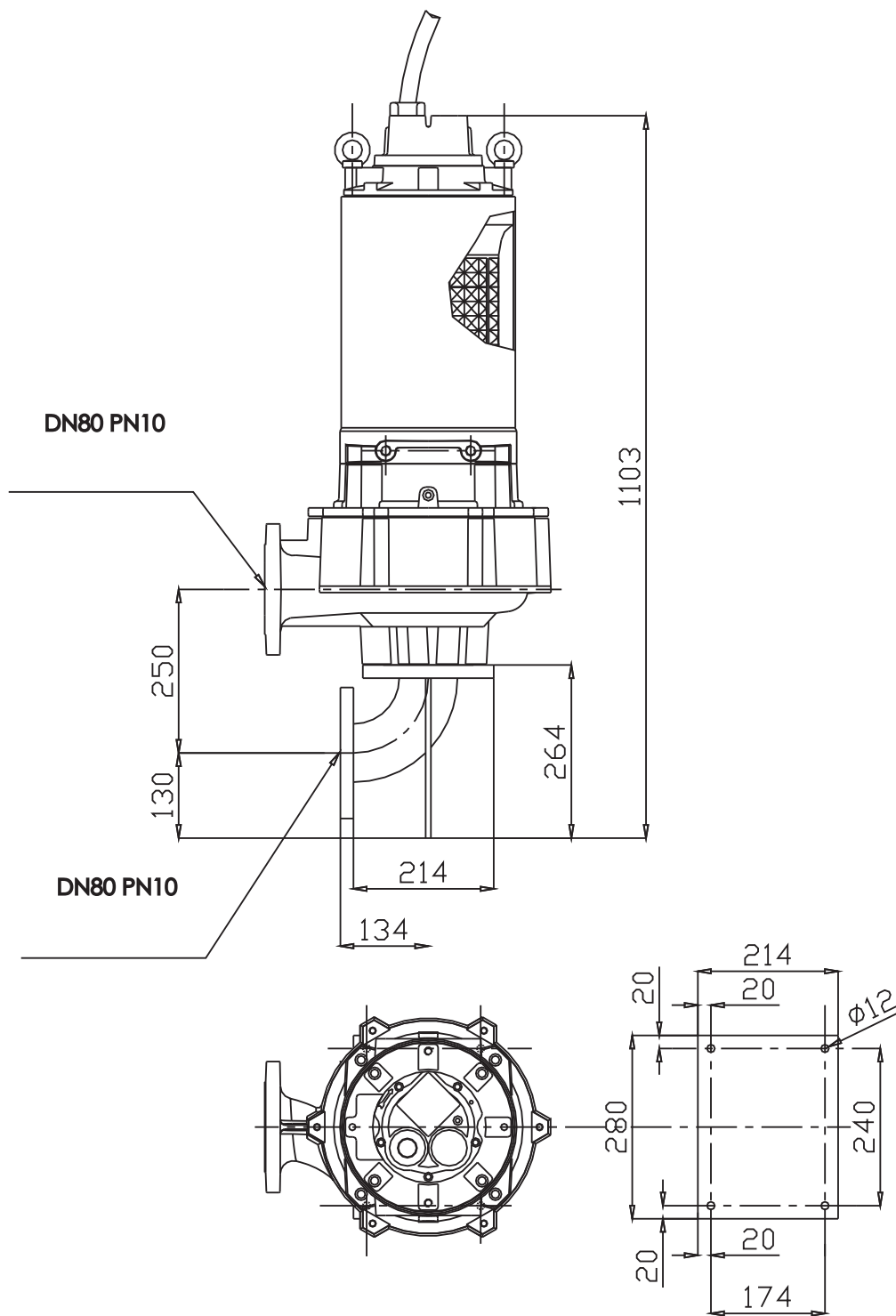
Dimenzije (mm)

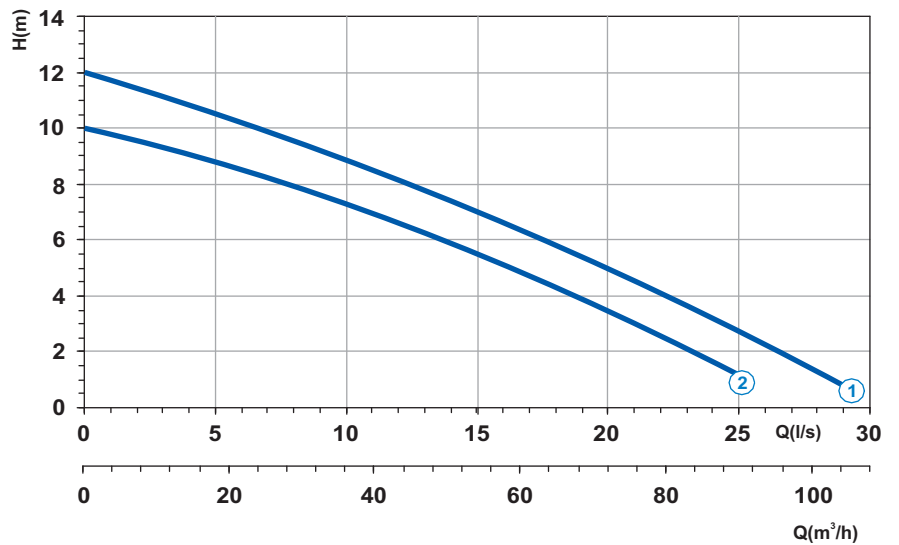
▽ MINIMALNI NIVO POTAPANJA



Suha instalacija

G213R1M1-M40AA2
 G213R1M5-M40AA2
 G213R1M2-M40AA2
 G213R1M3-M40AA2



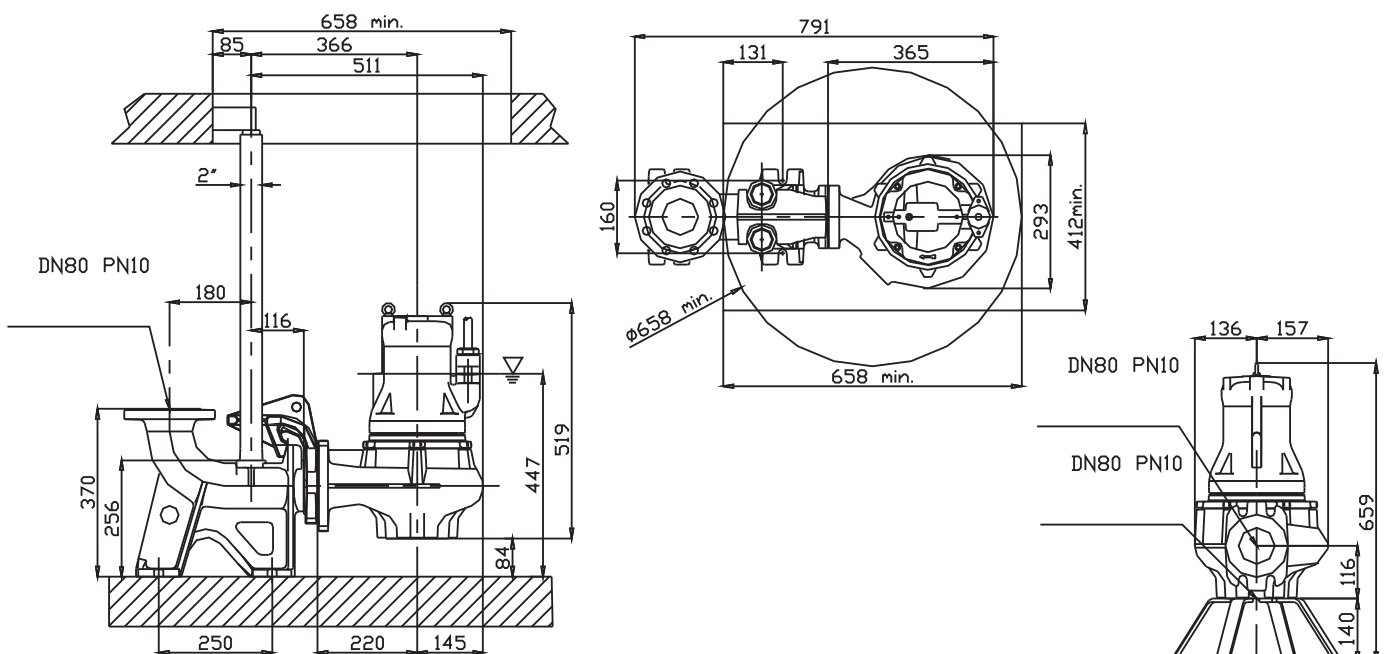


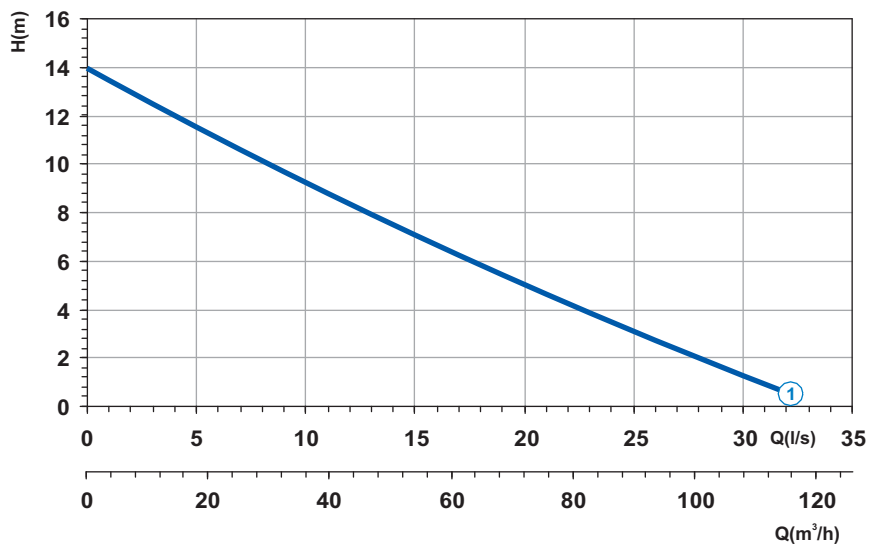
Napajanje	3ph 400V 50Hz
R.P.M.	1450
Slobodni prolaz (mm)	65
Izlaz (mm)	DN 80
Masa (Kg)	67

Krivulja N°	Code	Tip pumpe	MOTOR			ATEX code
			Nomin. snaga P2 (kW)	Nomin. struja I (A)	Startna struja Is (A)	
1	7009184	G409T1M1-M65AA0	2,8	6,5	29,2	7002792
2	7005464	G409T1M2-M65AA0	2,3	5,0	22,5	7005956

Dimenzije (mm)

MINIMALNI NIVO POTAPANJA



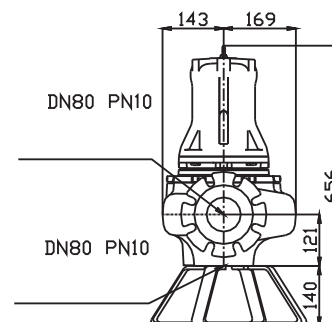
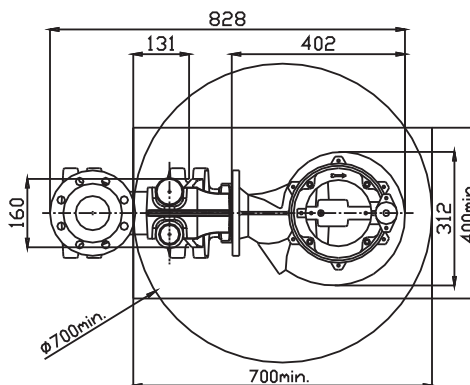
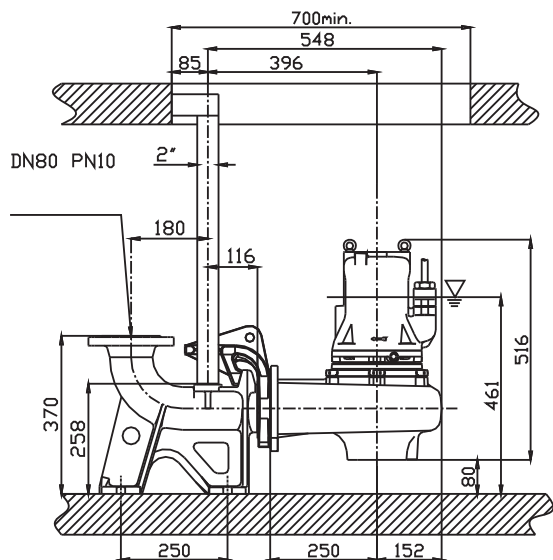


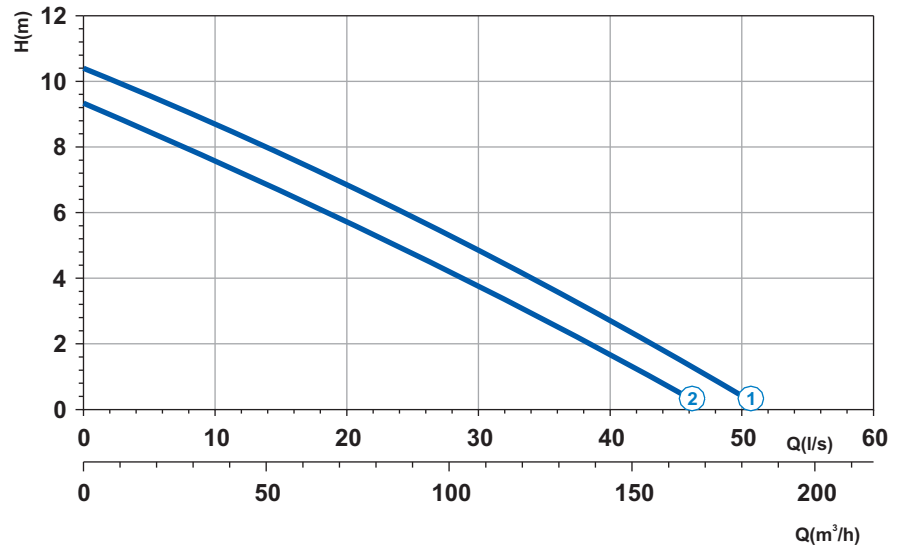
Krivulja N°	Code	Tip pumpe	MOTOR			ATEX code
			Nomin. snaga P2 (kW)	Nomin. struja I (A)	Startna struja Is (A)	
1	7003521	G409T1M1-M76AA0	2,8	6,5	29,2	7008262

Napajanje	3ph 400V 50Hz
R.P.M.	1450
Slobodni prolaz (mm)	76
Izlaz (mm)	DN 80
Masa (Kg)	66

Dimenzije (mm)

▽ MINIMALNI NIVO POTAPANJA



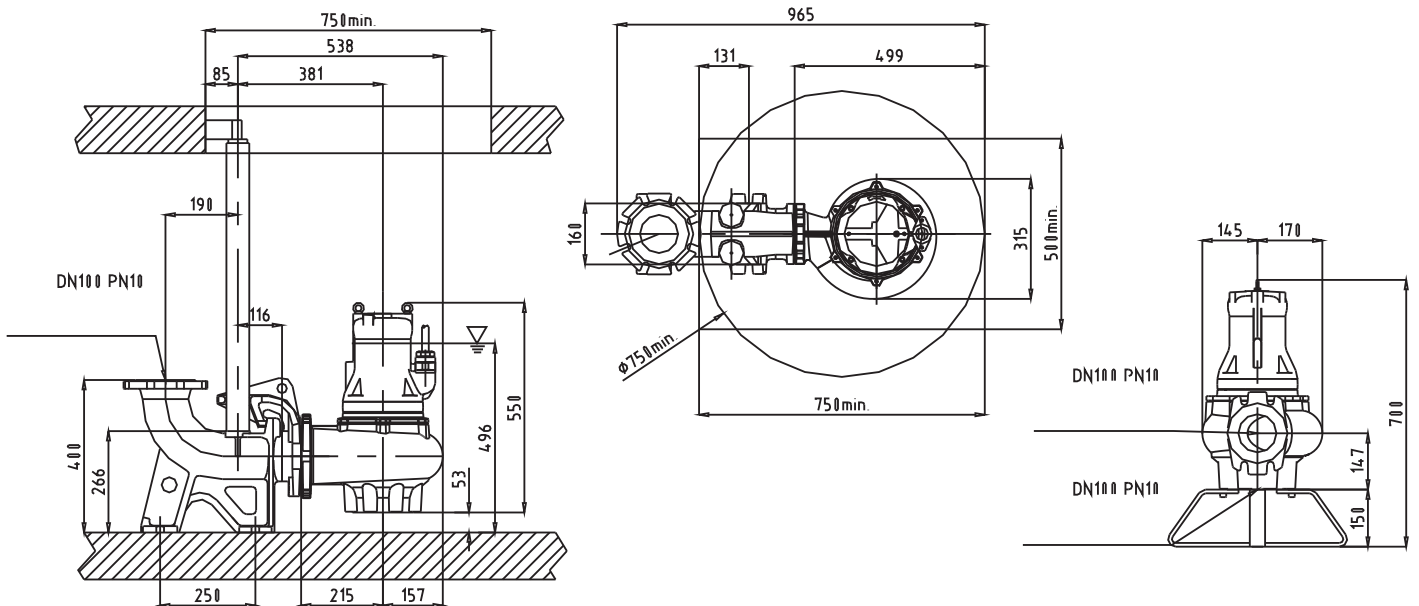


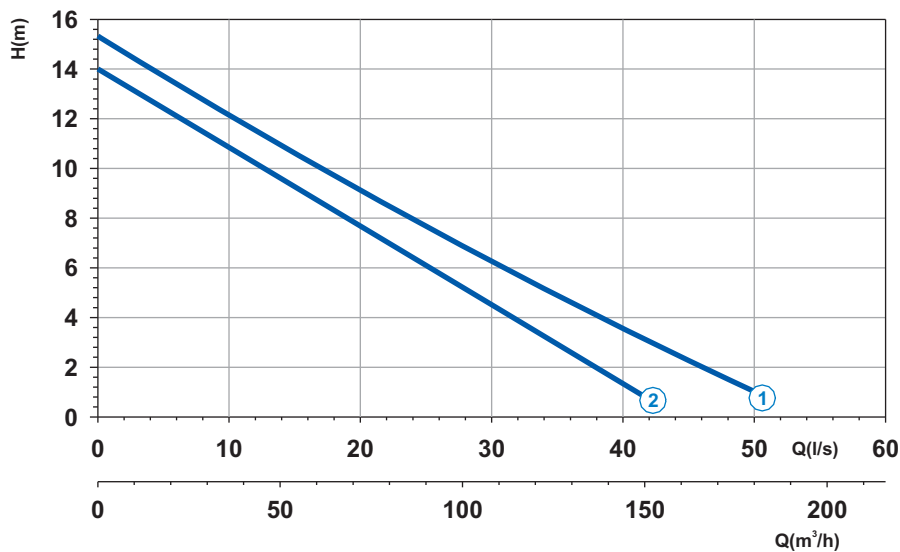
Napajanje	3ph 400V 50Hz
R.P.M.	1450
Slobodni prolaz (mm)	90
Izlaz (mm)	DN 100
Masa (Kg)	67

Krivulja N°	Code	Tip pumpe	MOTOR			ATEX code
			Nomin. snaga P2 (kW)	Nomin. struja I (A)	Startna struja Is (A)	
1	7000218	G409T1M1-P90AA0	2,8	6,5	29,2	7007626
2	7006615	G409T1M2-P90AA0	2,8	6,5	29,2	7007627

Dimenzije (mm)

▽ MINIMALNI NIVO POTAPANJA



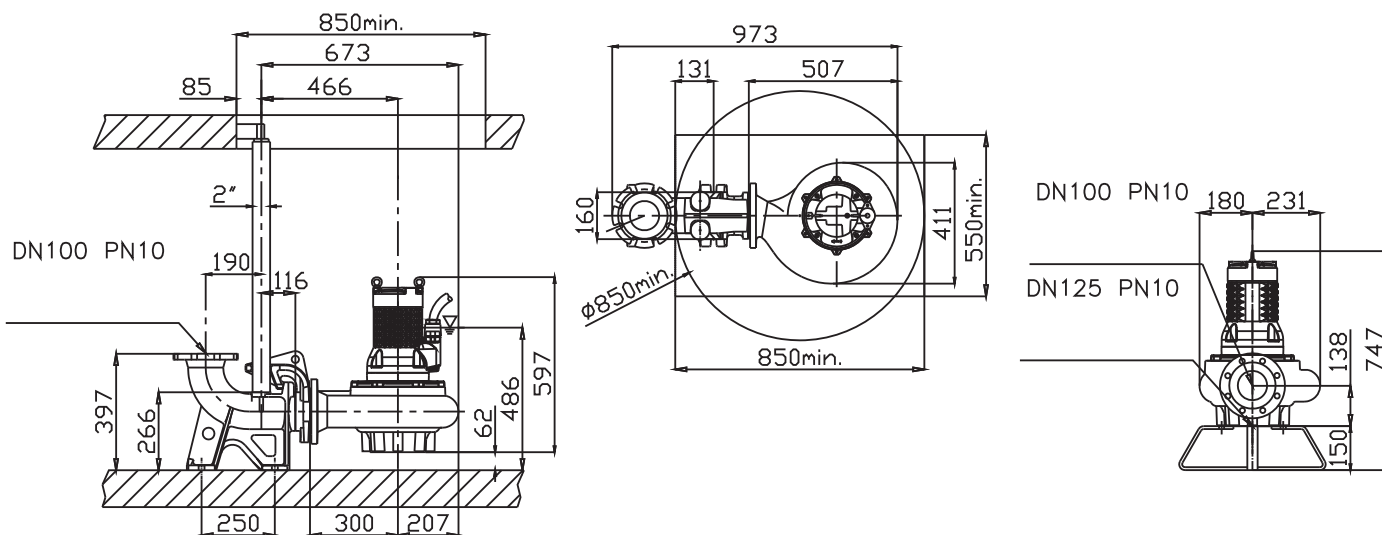


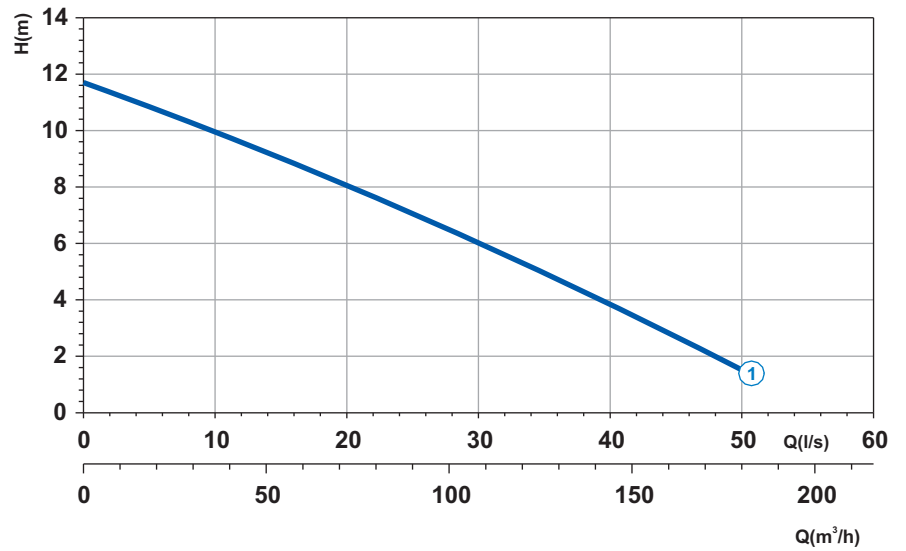
Krivulja N°	Code	Tip pumpe	MOTOR			ATEX code
			Nomin. snaga P2 (kW)	Nomin. struja I (A)	Startna struja Is (A)	
1	7000112	G410R1M1-P78AA2	3,8	8	36	7008609
2	7000203	G410R1M2-P78AA2	3,8	8	36	7002797

Napajanje	3ph 400/690V 50Hz
R.P.M.	1450
Slobodni prolaz (mm)	78
Izlaz (mm)	DN 100
Masa (Kg)	110


Dimenzije (mm)

▽ MINIMALNI NIVO POTAPANJA



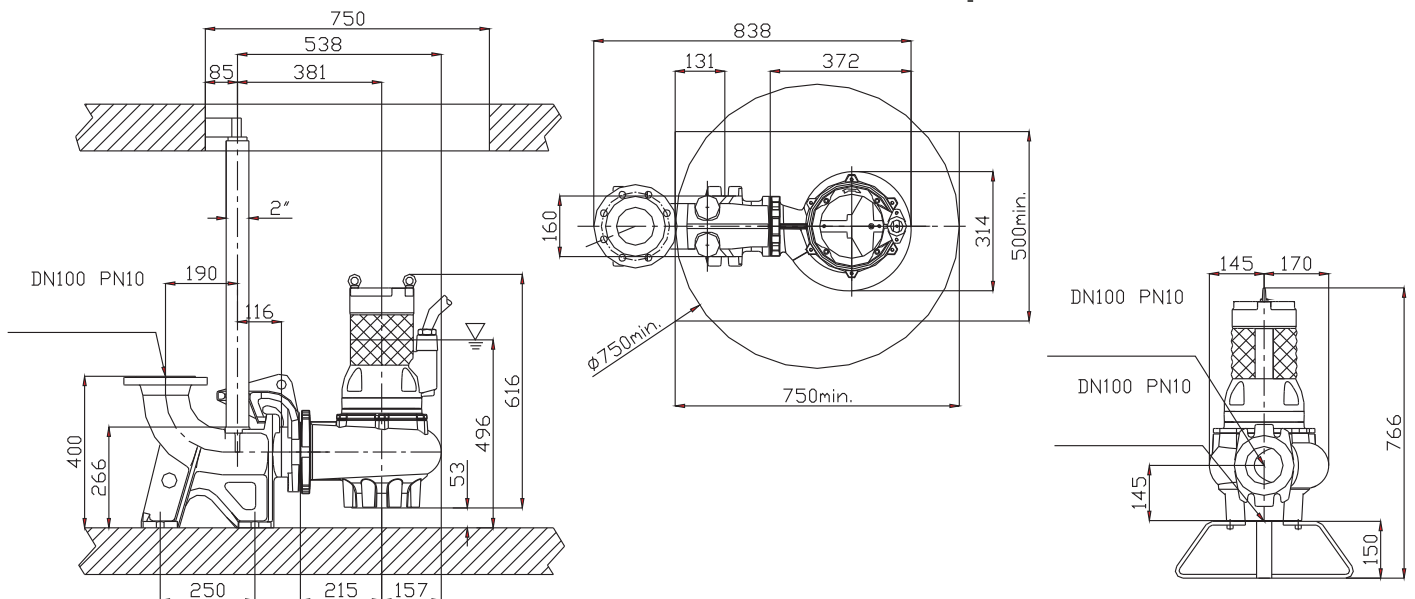


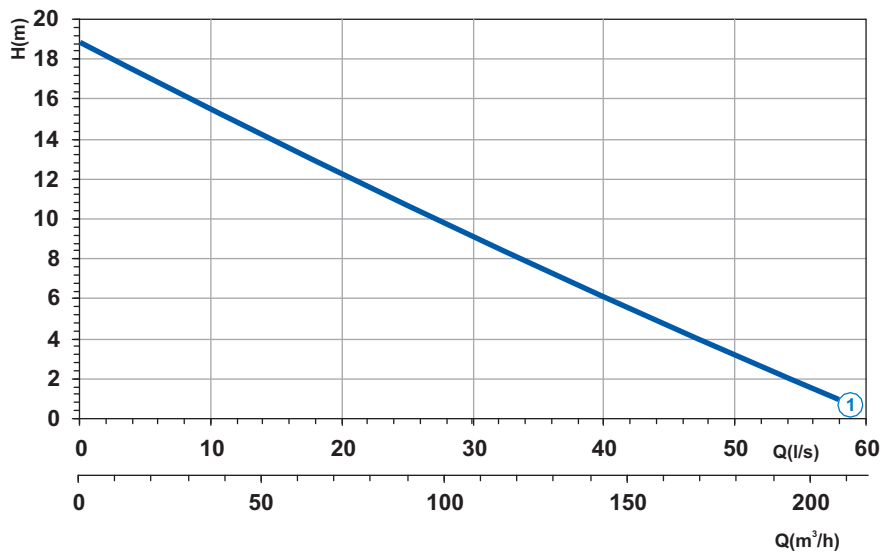
Napajanje	3ph 400/690V 50Hz
R.P.M.	1450
Slobodni prolaz (mm)	90
Izlaz (mm)	DN 100
Masa (Kg)	82


Krivulja N°	Code	Tip pumpe	MOTOR			ATEX code 
			Nomin. snaga P2 (kW)	Nomin. struja I (A)	Startna struja Is (A)	
1	7002949	G410R1M1-P90AA2	3,8	8	36	7002809

Dimenzije (mm)

▽ MINIMALNI NIVO POTAPANJA



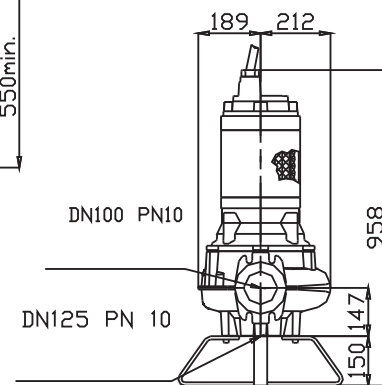
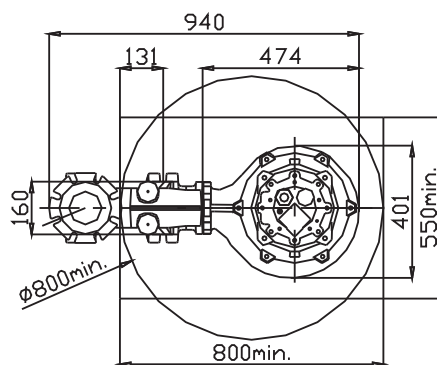
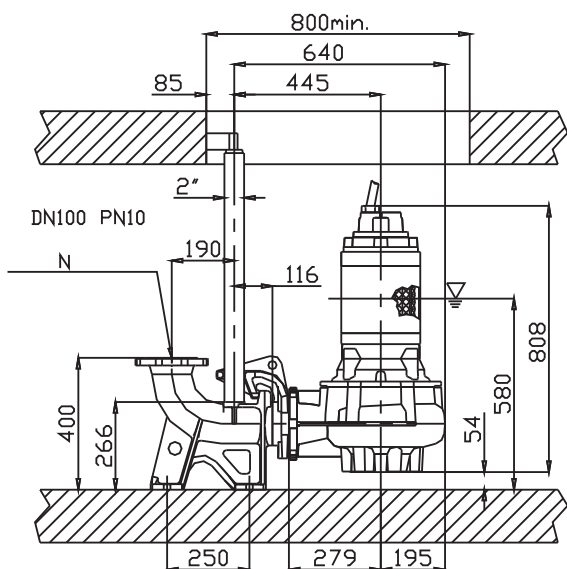


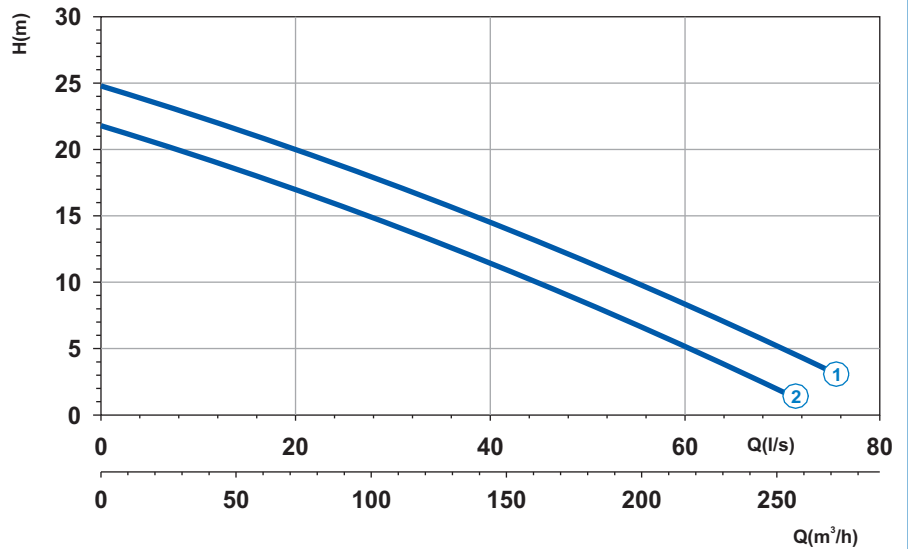
Krivulja N°	Code	Tip pumpe	MOTOR			ATEX code 
			Nomin. snaga P2 (kW)	Nomin. struja I (A)	Startna struja Is (A)	
1	7005181	G411R1M1-P78AA2	5	11	52,8	7007499

Napajanje	3ph 400/690V 50Hz
R.P.M.	1450
Slobodni prolaz (mm)	78
Izlaz (mm)	DN 100
Masa (Kg)	161

Dimenzije (mm)

▽ MINIMALNI NIVO POTAPANJA



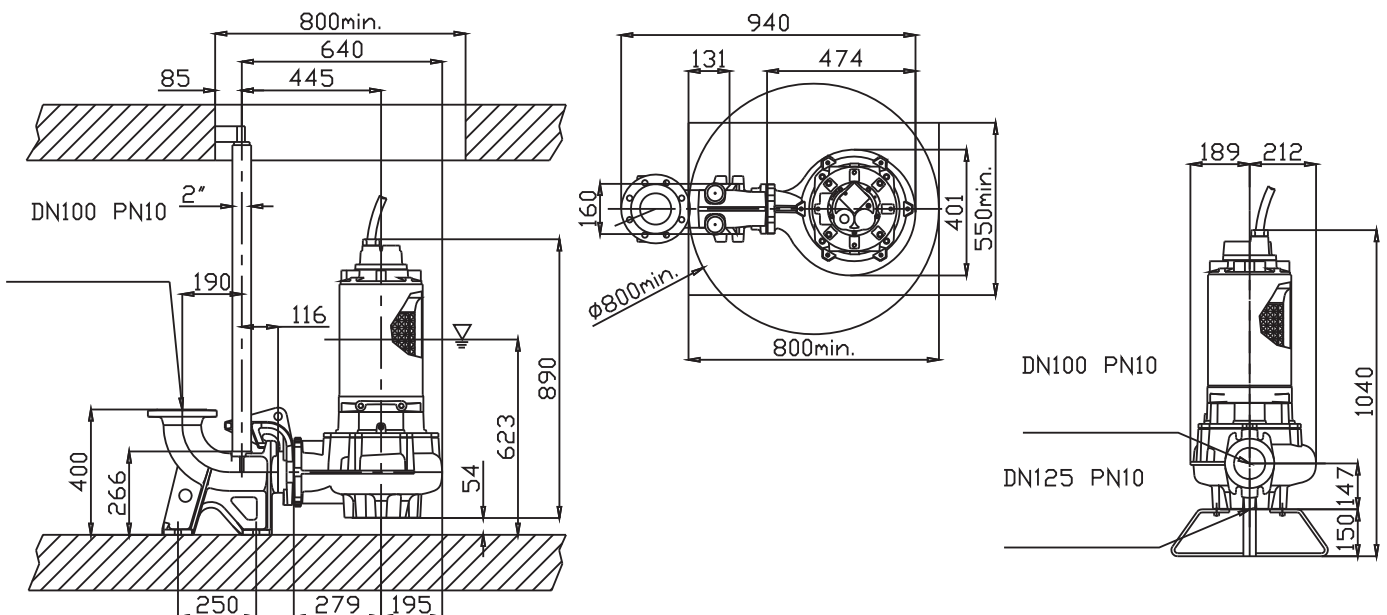


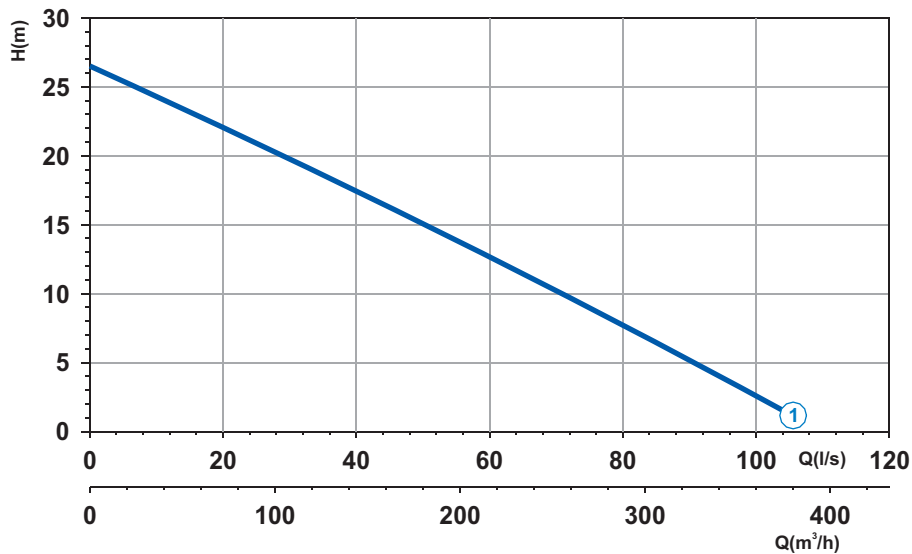
Napajanje	3ph 400/690V 50Hz
R.P.M.	1450
Slobodni prolaz (mm)	90
Izlaz (mm)	DN 100
Masa (Kg)	204

Krivulja N°	Code	Tip pumpe	MOTOR			ATEX code	
			Nomin. snaga P2 (kW)	Nomin. struja I (A)	Startna struja Is (A)		
1	7009232	G413R1M1-P90AA2	12,1	27	148,5	7007489	
2	7009431	G413R1M2-P90AA2	10,1	22	121	7007490	

Dimenzije (mm)

▽ MINIMALNI NIVO POTAPANJA

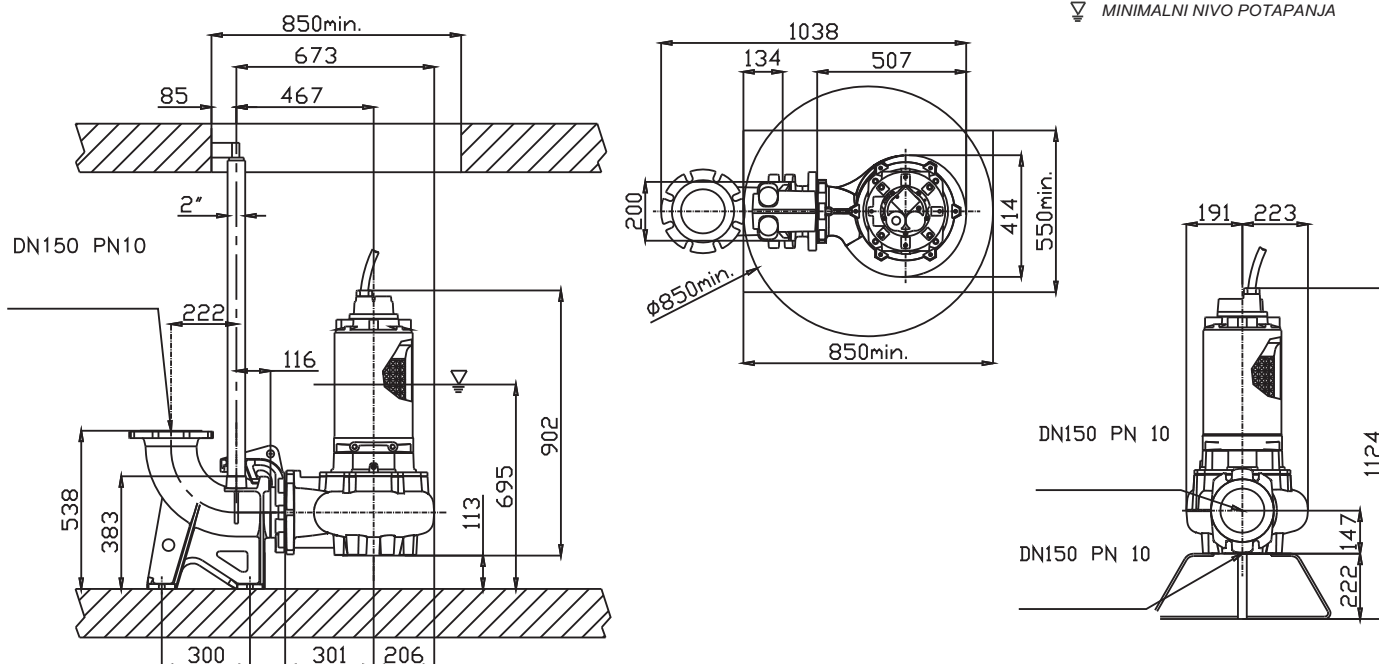


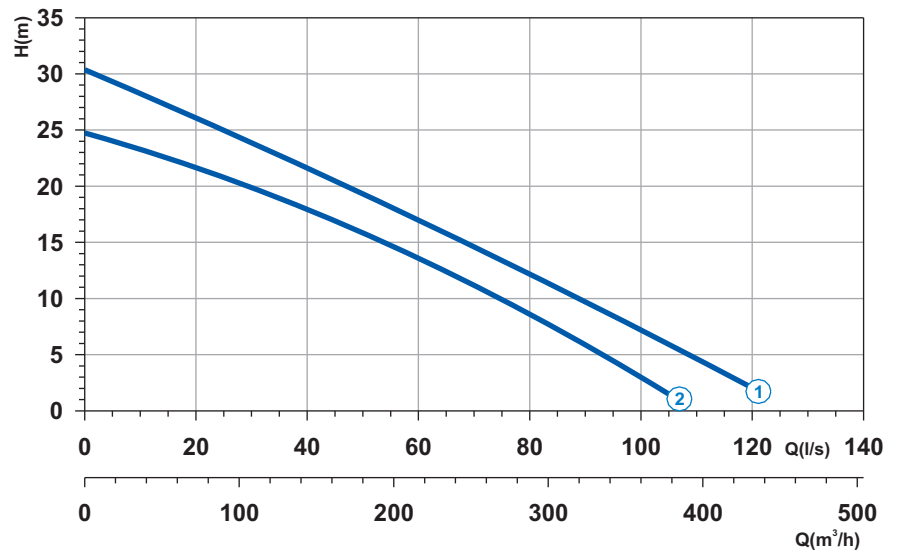


Krivulja N°	Code	Tip pumpe	MOTOR			ATEX code
			Nomin. snaga P2 (kW)	Nomin. struja I (A)	Startna struja Is (A)	
1	7006379	G413R1M3-S100AA2	14,1	30	165	7007488

Napajanje	3ph 400/690V 50Hz
R.P.M.	1450
Slobodni prolaz (mm)	100
Izlaz (mm)	DN 150
Masa (Kg)	218

Dimenzije (mm)



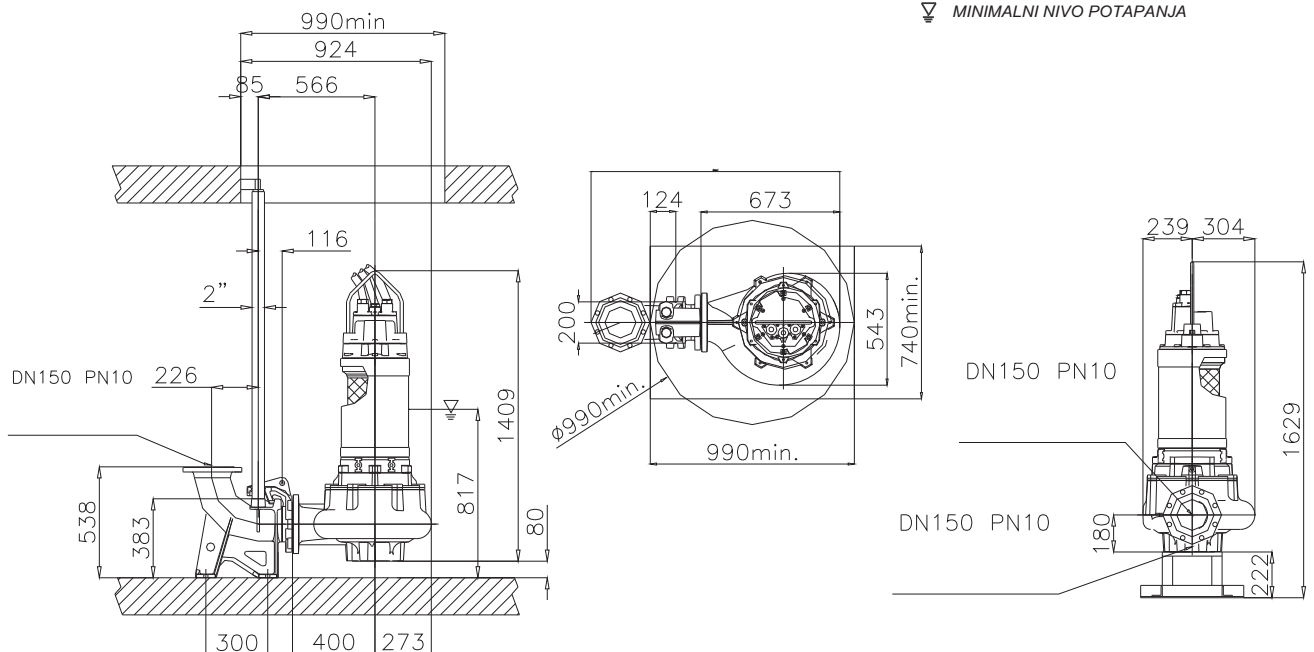


Napajanje	3ph 400V 50Hz
R.P.M.	1450
Slobodni prolaz (mm)	100
Izlaz (mm)	DN 150
Masa (Kg)	320

Krivulja N°	Code	Tip pumpe	MOTOR			ATEX code	
			Nomin. snaga P2 (kW)	Nomin. struja I (A)	Startna struja Is (A)		
1	7009710	G416R1M1-S100AA2	20,7	41,5	245	-	
2	7009937	G416R1M2-S100AA2	20,7	41,5	245	-	

Dimenzije (mm)

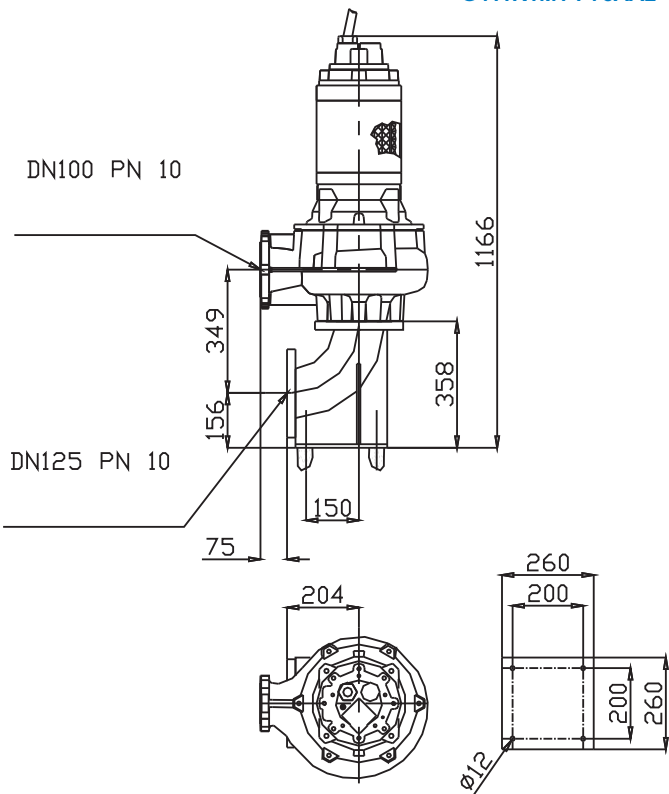
MINIMALNI NIVO POTAPANJA



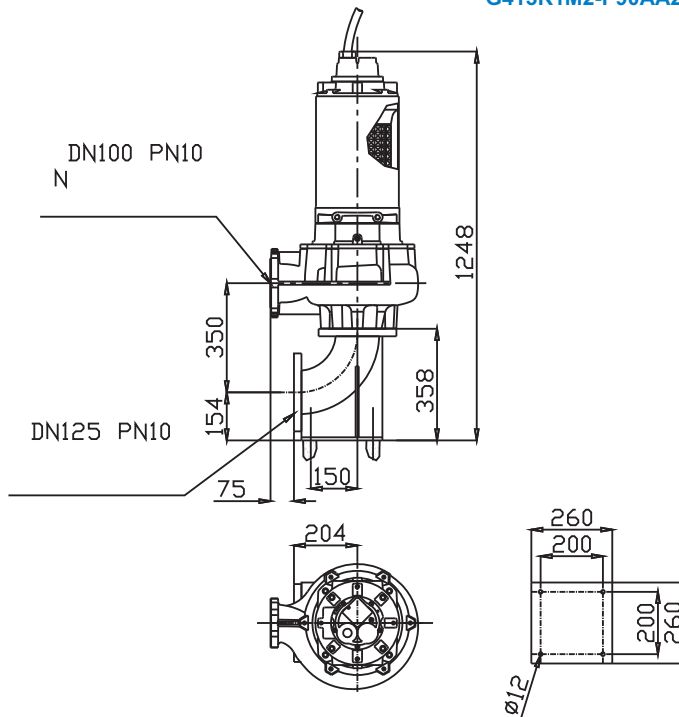
Suha instalacija



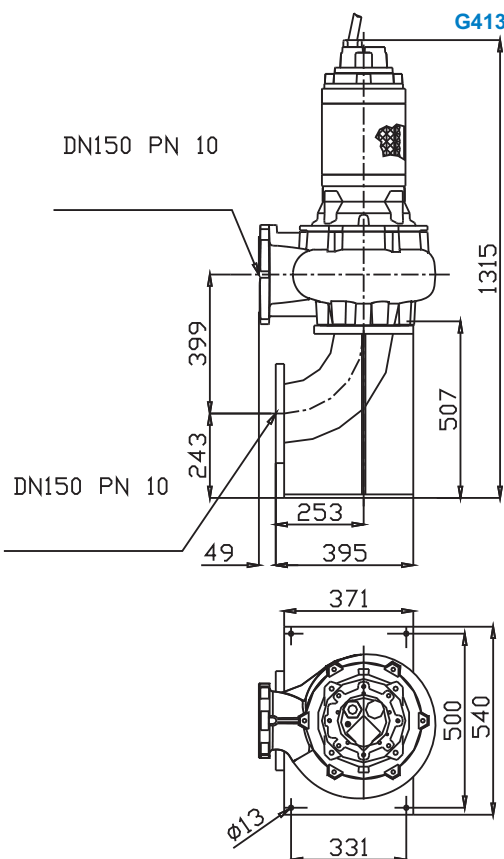
G411R1M1-P78AA2



G413R1M1-P90AA2
G413R1M2-P90AA2



G413R1M3-S100AA2



G416R1M1-S100AA2
G416R1M2-S100AA2

