

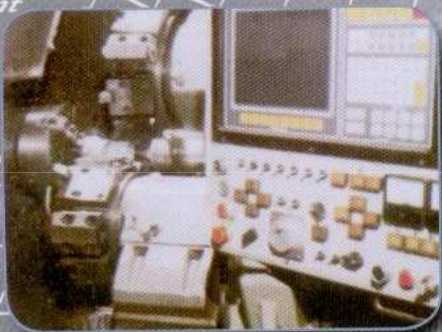
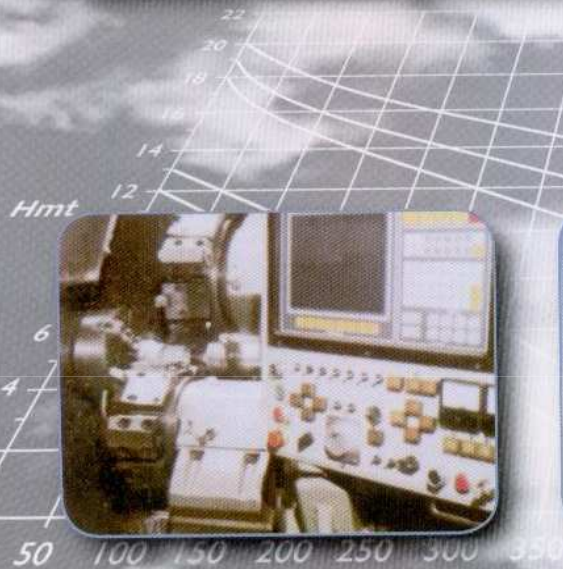
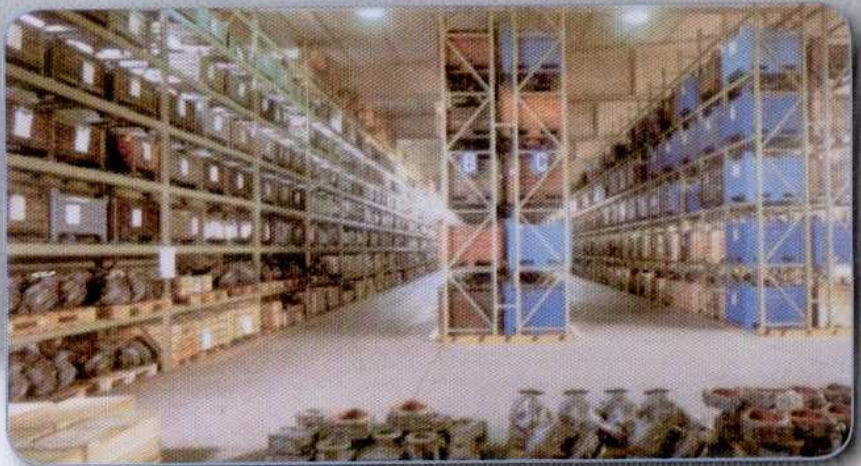
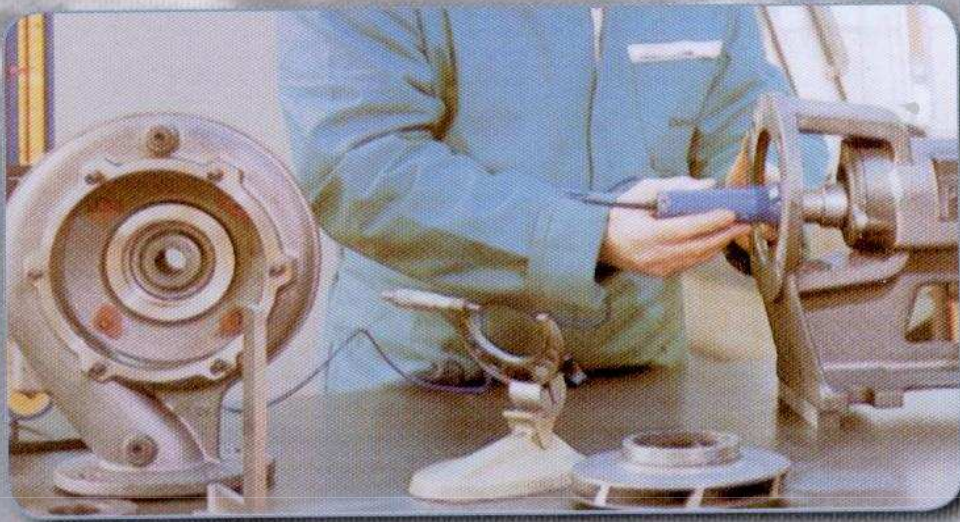
Cadoppi

MOTOPOMPE DIESEL E BENZINA DIESEL AND GASOLINE MOTORPUMPS



50 100 150 200 250 300 350 400 450 500 550 600 650 700 750 800 850 900 950

Caldoppiti





Le motopompe Cadoppi sono costruite rispettando le normative CE ed equipaggiate con motori diesel e benzina dei più importanti costruttori mondiali.

La gamma di potenze disponibili per le motopompe a benzina varia da 6 Hp a 11 Hp; mentre per le motopompe diesel da 4,8 Hp a 300 Hp.

Tutte le motopompe vengono equipaggiate con pompe Cadoppi ed allestite con tutti gli accessori necessari per permettere un funzionamento razionale sfruttando al massima la potenza disponibile erogata dal motore tenendo sotto controllo i consumi di carburante. Vengono allestite con automatismi speciali a seconda delle esigenze dell'utilizzatore finale.

Le motopompe Cadoppi sono utilizzate in:

- Agricoltura
- Giardinaggio
- Impianti industriali
- Impianti antincendio
- Edilizia
- Travaso acque sporche
- Travaso vasche di raccolta liquami

Per soddisfare le applicazioni sopra elencate la ditta Cadoppi costruisce pompe mono e plurigrante centrifughe a bassa, media e alta prevalenza e pompe autoadescanti per acque sporche a girante aperta.

A richiesta è possibile costruire pompe in acciaio inox o bronzo per prodotti chimicamente aggressivi, acque di mare.

Le motopompe vengono costruite utilizzando sempre pompe Cadoppi sia centrifughe che autoadescanti, mentre, per quanto riguarda la motorizzazione sono state scelte le seguenti case costruttrici:

- Lombardini raffreddati ad aria e ad acqua
- Ruggerini raffreddati ad aria
- VM raffreddati ad aria
- SAME raffreddati ad aria e ad acqua
- Iveco raffreddati ad acqua
- Deutz. raffreddati ad acqua



Cadoppi motorpumps are manufactured according to CE norms and are equipped with gasoline or diesel engines of the most important international manufactures.

The available power range for the gasoline driven motorpumps varies from 6hp to 11hp, while for the diesel driven units from 4.8hp to 300hp.

All the motorpumps are equipped with Cadoppi pump sections, and completed with all the necessary accessories in order to provide the most rational functioning and obtain the maximum efficiency from the engine, with an eye to the fuel consumption. Also special automatic devices can be available according to the requirements of the final user.

The Cadoppi morpumps are used in:

- Agriculture
- Gardening
- Industrial Systems
- Fire fighting
- Building industry
- Dirty waters drainage
- Collection and trasfer of sewage water.

In order to cope with the above mentioned applications, Cadoppi is manufacturing single and multistage centrifugal pumps with low, middle and high pressure head and self-priming pumps for dirty waters and open impeller.

On request it is possible to supply pumps built all in stainless steel or bronze, to work with chemically aggressive liquids and sea water.

The motorpumps are built using CADOPPI pumps both centrifugal than self priming type, while as for engines the following manufacturers have been choosen:

- LOMBARDINI air and water cooled
- RUGGERINI air cooled
- VM air cooled
- SAME air and water cooled
- IVECO water cooled
- DEUTZ water cooled

Referenze



Fornitura:
SLOVENIA
IMPIANTI IRRIGAZIONE

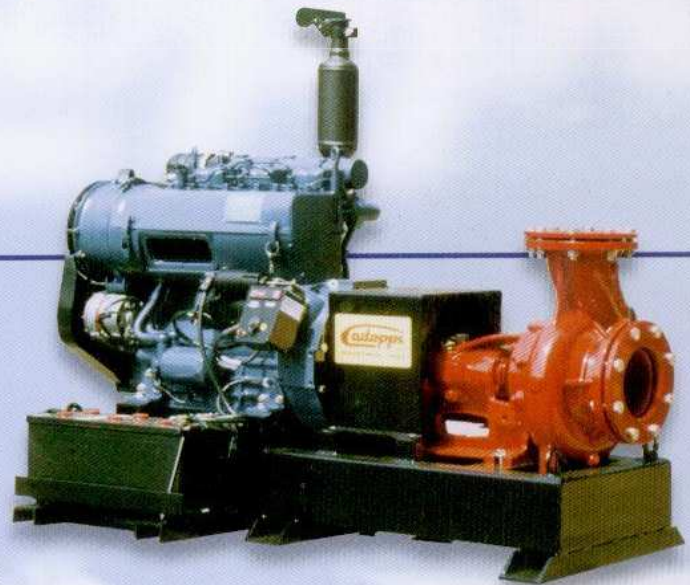
Supply of:
IRRIGATION SYSTEM
SLOVENIA



Fornitura: CHEMATOL - NIGERIA
Supply of: CHEMATOL - NIGERIA

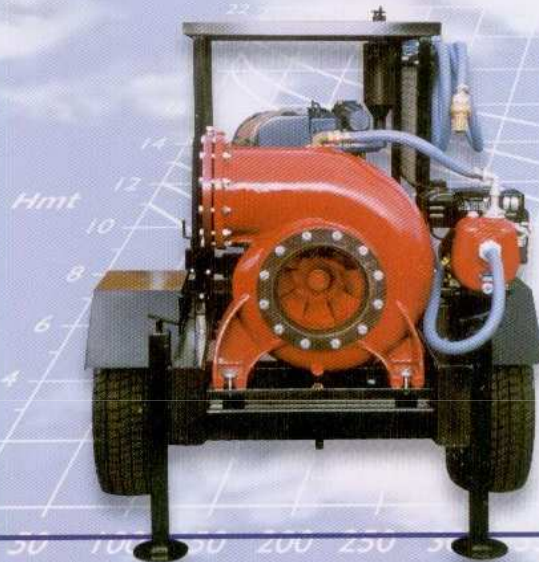


Fornitura: MOTOPOMPA BONIFICA - EMIRATI ARABI
Supply of: MOTOR PUMP FOR DRAINAGE (U.A.E.)



Fornitura: MOTOPOMPA PESCI-COLTURA UNGHERESE
Supply of: MOTORPUMP FOR PISCICULTURE (HUNGARY)

Fornitura: MOTOPOMPA ACQUEDOTTO
Supply of: MOTORPUMP FOR AQUEDUCT



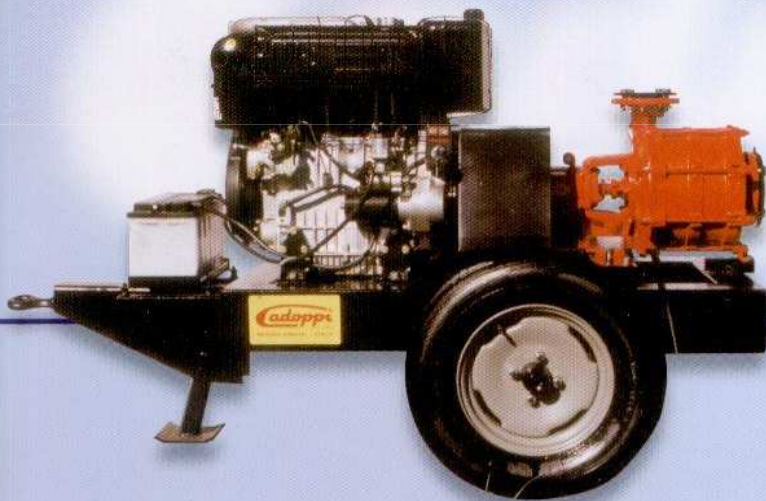
References



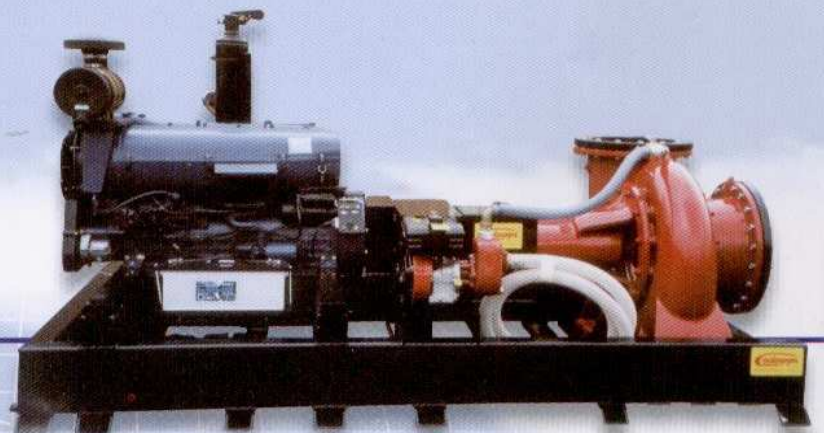
Fornitura: MOTOPOMPE EMU - ETIOPIA
Supply of: MOTORPUMP SUPPLIED TO ETHIOPIA - EMU



Fornitura: MOTOPOMPE BONIFICA - CAMPANIA
Supply of: MOTORPUMP FOR DRAINAGE - CAMPANIA



Fornitura: MOTOPOMPA IRRIGAZIONE
Supply of: IRRIGATION MOTORPUMP SUPPLY



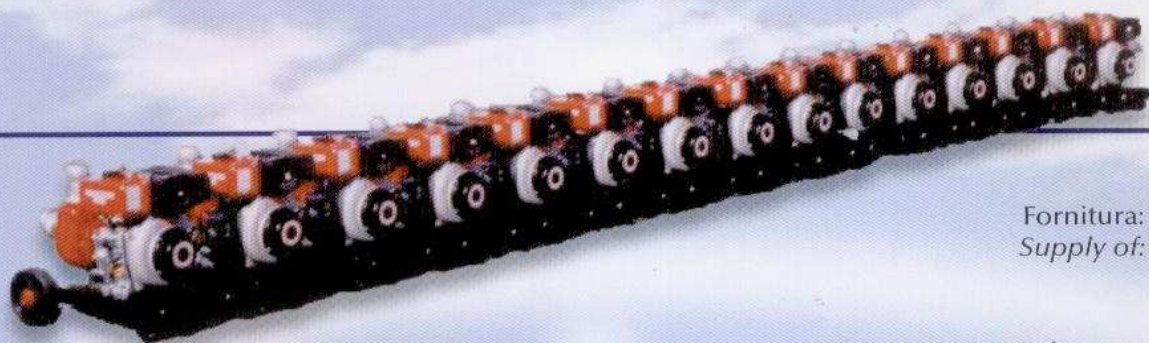
Fornitura: PESCIOLTURA - UNGHERIA
Supply of: MOTORPUMP
FOR PISCICULTURE - HUNGARY



Fornitura: N. 40 MOTOPOMPE ANTINCENDIO - TUNISIA
Supply of: N. 40 FIRE FIGHTING MOTORPUMPS FOR TUNISIA

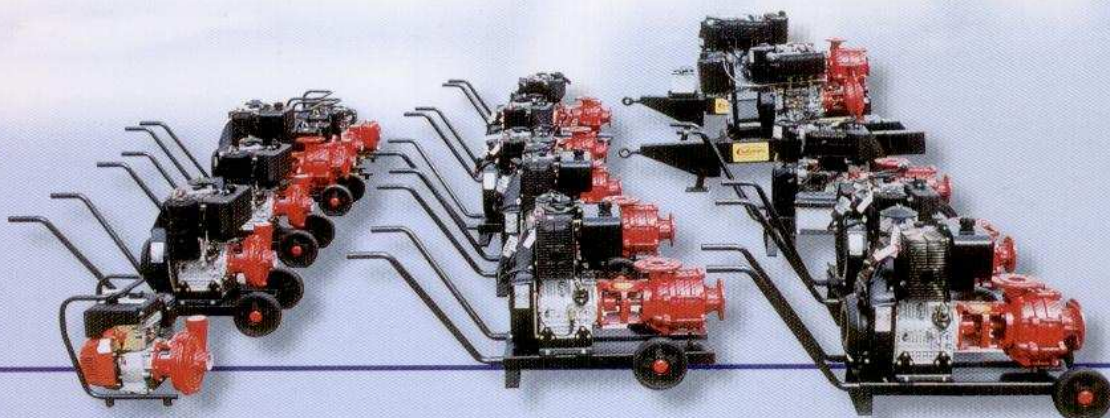
Referenze

References



Fornitura: GHANA
Supply of: GHANA

Fornitura: ALGERIA
Supply of: ALGERIA



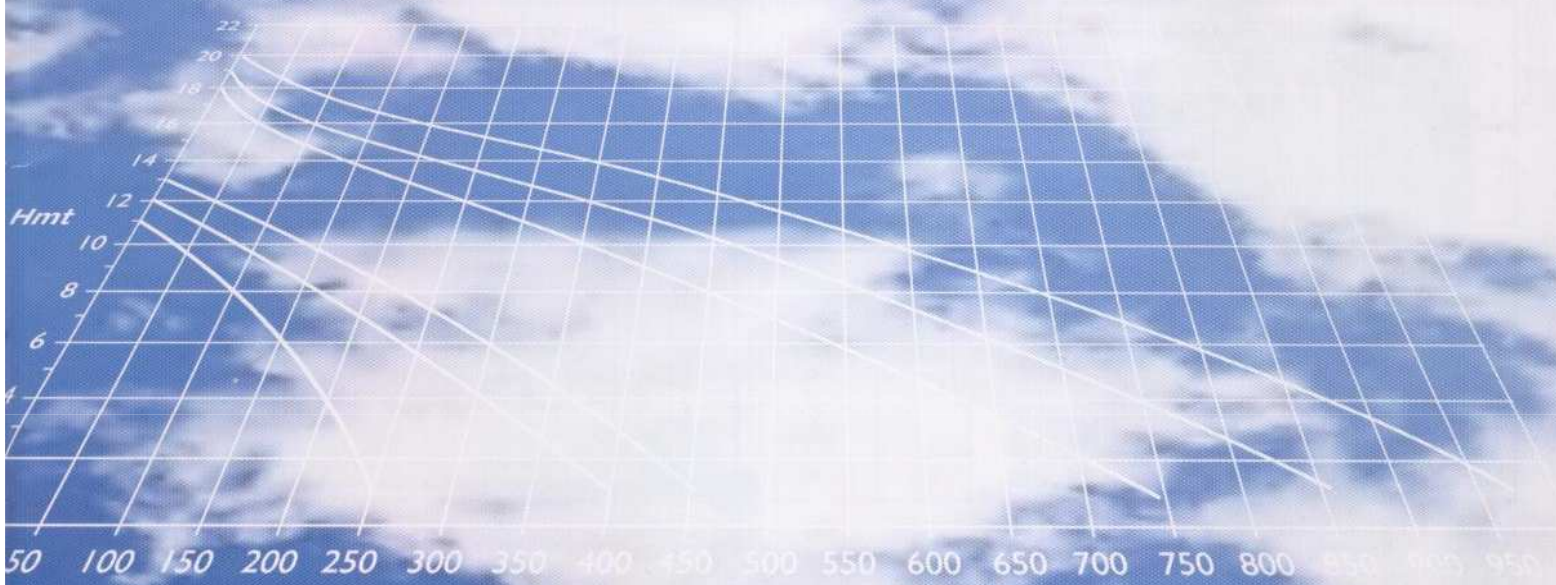
Fornitura: TUNISIA, PROTEZIONE CIVILE
Supply of: TUNISIE, FIRE BRIGADE



Motopompe Centrifughe

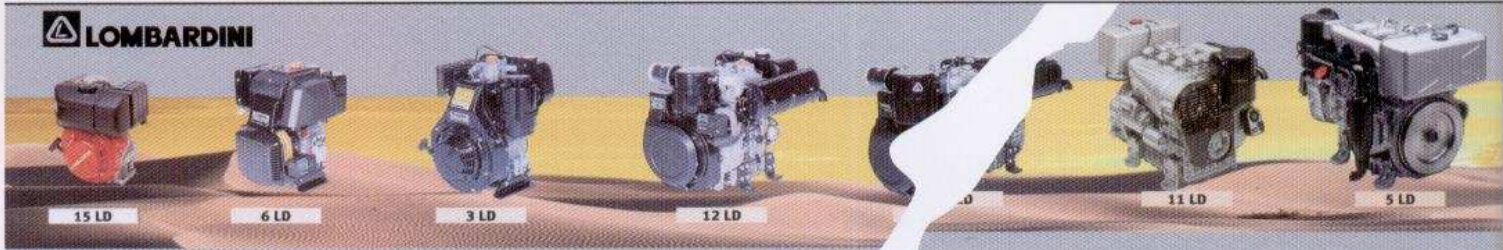
Diesel

Centrifugal Motorpumps





LOMBARDINI



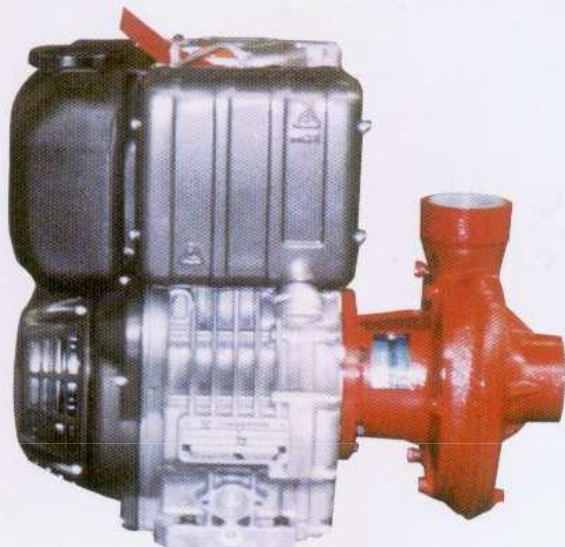
motori diesel

raffreddati ad aria

Motore	Cilindri		Potenza kW/CV *			Velocità giri/min.	Cilindrata cm ³
	N.	N	NB	NA	NA		
15 LD 225	1	3,5/4,8	3,3/4,5	3,1/4,2	3600	230	
15 LD 315	1	5,0/6,8	4,6/6,2	4,1/5,6	3600	310	
15 LD 350	1	5,5/7,5	5,1/7,0	4,7/6,4	3600	350	
15 LD 400	1	7,3/10,0	6,6/9,0	6,2/8,4	3600	400	
15 LD 440	1	8,1/11,0	7,4/10,1	6,8/9,3	3600	440	
6 LD 360	1	5,5/7,5	5,1/7,0	4,7/6,4	3600	360	
6 LD 400	1	6,25/8,5	5,9/8,0	5,4/7,3	3600	400	
6LD 435	1	7,3/10,0	6,8/9,3	6,2/8,4	3600	435	
3 LD 510	1	9,0/12,2	7,35/10,0	6,6/9,0	3000	510	
12 LD 435-2/B1	2	14,7/20,0	13,2/18,0	12,2/16,6	3600	870	
12 LD 475-2	2	15,8/21,5	14,85/20,2	13,53/18,4	3600	950	
9 LD 625-2	2	21,0/28,6	19,1/26,0	17,6/24,5	3600	1350	
9 LD 625-2 NR *	2	20,2/27,5	19,3/26,2	17,6/24,5	3600	1350	
11 LD 626-3	3	30,9/42,0	28,6/39,0	26,4/36,0	3600	2070	
11 LD 626-3 NR *	3	27,5/37,4	25,4/34,5	23,6/32,5	3600	1890	
5 LD825-2	2	25,0/34,0	22,5/30,0	20,5/28,0	3600	1250	
5 LD825-3	3	38,0/51,7	34,5/46,5	31,5/42,0	3600	2250	
5 LD825-4	4	49,0/66,0	45,0/60,0	41,0/54,0	3600	2960	
5 LD930-3	3	40,0/53,3	36,0/48,0	33,0/44,0	3600	2700	
5 LD930-4	4	50,0/66,7	45,0/60,0	41,0/54,0	3600	2960	

raffredd

Motore	Cilindri		Potenza kW/CV *			Velocità giri/min.	Cilindrata cm ³
	N.	N	NB	NA	NA		
LDW 502	2	9,8/13,4	9,1/12,4	8,2/11,2	3600	505	
LDW 602	2	11,8/16,0	10,7/14,0	9,7/13,0	3600	605	



Prestazioni motopompa a: Motorpump performances at:	RPM 2600	Motore: Raffreddato ad aria Engine: Air cooling
--	-----------------	--

TIPO MOTOPOMPA MOTORPUMP TYPE	CARATTERISTICHE MOTORE - ENGINE FEATURES					MODELLO POMPA PUMP MODEL	TIPO ACCOPPIAMENTO COUPLING TYPE		BOCCHIE POMPA PORTS PUMP		PORTATA DELIVERY L/1'	PREVALENZA HEAD MT	HP ASSORBITI ABSORBED
	MOTORE ENGINE	HP (N)	RPM	N° CILINDRI CYLINDERS	AVVIAMENTO STARTING		GIUNTO JOINT	DIRETTO DIRECT	DNa	DNm			
DC6262-552	Lombardini 9LD626-2	28	3000	2	ELETTRICO 12 V. ELECTRIC 12 V.	CFA552-6240		●	mm. 65	mm. 55	100 350 700 1000	110 104,5 93 68	8,5 14,1 19,6 22,7
DC5223-6260	Lombardini 11LD522-3	38	3600	3	ELETTRICO 12 V. ELECTRIC 12 V.	CFA55-6260R		●	mm. 65	mm. 55	120 200 700 1000	76,5 74 61,5 44,6	13,0 14,0 21,4 24,7
DC6263-6260	Lombardini 11LD626-3	42	3000	3	ELETTRICO 12 V. ELECTRIC 12 V.	CFA552-6260L		●	mm. 65	mm. 55	300 500 700 1000	124 120 109 90	16 21 25 29
DC6263-6250	Lombardini 11LD626-3	42	3000	3	ELETTRICO 12 V. ELECTRIC 12 V.	CFA553-6250G		●	mm. 65	mm. 55	300 500 700 1000	153 144 132 95	18,6 25,3 29,3 34,6
DC6263-9250	Lombardini 11LD626-3	42	3000	3	ELETTRICO 12 V. ELECTRIC 12 V.	CFA65-9250T		●	mm. 80	mm. 65	700 1000 1400 1600	67,1 61,3 48,5 40	23,2 28,4 33,7 35,7
DC3302-11196	Lombardini 25LD330-2	16	3600	2	ELETTRICO 12 V. ELECTRIC 12 V.	CFA50-11196		●	mm. 65	mm. 50	800 1000 1400 1800	39 36 27 16	8,5 10,0 11,5 12,0
DC4772-16180	Lombardini 12LD477-2	23	3600	2	ELETTRICO 12 V. ELECTRIC 12 V.	CFA80-16180B		●	mm. 100	mm. 80	800 1000 1600 2000	31 30 24,5 19	10,0 11,4 14,0 15,5
DC5223-16210	Lombardini 11LD522-3	38	3600	3	ELETTRICO 12 V. ELECTRIC 12 V.	CFA80-16210R		●	mm. 100	mm. 80	350 800 1400 2000	47 45,5 42,5 36,5	12,0 16,0 21,0 25,0
DC6263-18210	Lombardini 11LD626-3	42	3000	3	ELETTRICO 12 V. ELECTRIC 12 V.	CFA80-18210		●	mm. 100	mm. 80	1400 1800 2500 3000	44,2 41 31,5 22	22 25 29 31
DC6263-M150AS	Lombardini 11LD626-3	42	3000	3	ELETTRICO 12 V. ELECTRIC 12 V.	CS-M150AS		●	mm. 150	mm. 150	2000 2500 3500 4500	34 32,5 29 23,5	28 29,2 31,5 33,2

Prestazioni motopompa a: Motorpump performances at:	RPM 2800	Motore: Raffreddato ad aria Engine: Air cooling
--	-----------------	--

TIPO MOTOPOMPA MOTORPUMP TYPE	CARATTERISTICHE MOTORE - ENGINE FEATURES					MODELLO POMPA PUMP MODEL	TIPO ACCOPPIAMENTO COUPLING TYPE		BOCCHIE POMPA PORTS PUMP		PORTATA DELIVERY L/1'	PREVALENZA HEAD MT	HP ASSORBITI ABSORBED
	MOTORE ENGINE	HP (N)	RPM	N° CILINDRI CYLINDERS	AVVIAMENTO STARTING		GIUNTO JOINT	DIRETTO DIRECT	DNa	DNm			
DC6262-9238	Lombardini 9LD626-2	28	3000	2	ELETTRICO 12 V. ELECTRIC 12 V.	CFA55-9238		●	mm. 65	mm. 55	600 800 900 1200	67 64 62 52	13,0 17,0 19,0 23,0

Prestazioni motopompa a: Motorpump performances at:	RPM 2900	Motore: Raffreddato ad aria Engine: Air cooling
--	-----------------	--

TIPO MOTOPOMPA MOTORPUMP TYPE	CARATTERISTICHE MOTORE - ENGINE FEATURES					MODELLO POMPA PUMP MODEL	TIPO ACCOPPIAMENTO COUPLING TYPE		BOCCHIE POMPA PORTS PUMP		PORTATA DELIVERY L/1'	PREVALENZA HEAD MT	HP ASSORBITI ABSORBED
	MOTORE ENGINE	HP (N)	RPM	N° CILINDRI CYLINDERS	AVVIAMENTO STARTING		GIUNTO JOINT	DIRETTO DIRECT	DNa	DNm			
DC440-6190	Lombardini 15LD440	10,5	3600	1	AUTOAVVOLGENTE RECOIL STARTING	CFA50-6190		●	mm. 65	mm. 50	100 200 500 800	41 40 36 25	5,0 6,0 7,4 9,0
DC500-6195	Lombardini 15LD500	12	3600	1	AUTOAVVOLGENTE RECOIL STARTING	CFA50-6195L		●	mm. 65	mm. 50	100 300 600 800	41 39 34 25	5,0 6,5 8,0 9,0
DC3302-6210	Lombardini 25LD330-2	16	3600	1	ELETTRICO 12 V. ELECTRIC 12 V.	CFA50-6210		●	mm. 65	mm. 50	160 350 700 1000	52 49 41,5 26	7,2 9,3 12,0 14,0
DC6262-6240	Lombardini 9LD626-2	28	3000	2	ELETTRICO 12 V. ELECTRIC 12 V.	CFA55-6240		●	mm. 65	mm. 55	100 350 700 1000	76 72 65 52	12,0 13,0 19,5 22,0
DC6262-16178	Lombardini 9LD626-2	28	3000	2	ELETTRICO 12 V. ELECTRIC 12 V.	CFA65-16178		●	mm. 80	mm. 65	500 900 1400 1800	43 41 32,5 23	9,2 12,0 15,0 16,8
DC6262-16180	Lombardini 9LD626-2	28	3000	2	ELETTRICO 12 V. ELECTRIC 12 V.	CFA80-16180		●	mm. 100	mm. 80	500 900 1400 2000	41 38,5 35 27,5	13,5 14,0 17,5 20,0
DC6262-18180	Lombardini 9LD626-2	28	3000	2	ELETTRICO 12 V. ELECTRIC 12 V.	CFA80-18180B		●	mm. 100	mm. 80	1400 1800 2250 2800	36,5 32 25,5 13	18,0 20,0 22,0 23,3

Prestazioni motopompa a: **RPM 3000** Motore: **Raffreddato ad aria**
 Motorpump performances at: **Engine: Air cooling**

TIPO MOTOPOMPA MOTORPUMP TYPE	CARATTERISTICHE MOTORE - ENGINE FEATURES					MODELLO POMPA PUMP MODEL	TIPO ACCOPPIAMENTO COUPLING TYPE		BOCCHIE POMPA PORTS PUMP		PORTATA DELIVERY L/1'	PREVALENZA HEAD MT	HP ASSORBITI ABSORBED
	MOTORE ENGINE	HP (N)	RPM	N° CILINDRI CYLINDERS	AVVIAMENTO STARTING		GIUNTO JOINT	DIRETTO DIRECT	DNa	DNm			
DC440-6152	Lombardini 15LD440	10,5	3600	1	AUTOAVVOLGENTE RECOIL STARTING	CFA602-6152		●	mm.	mm.	100	64	3,8
											200	60	4,6
											300	56	6,0
									60	50	600	30	8,0
DC500-6152	Lombardini 15LD500	12	3600	1	AUTOAVVOLGENTE RECOIL STARTING	CFA603-6152		●	mm.	mm.	100	95	4,5
											200	92	5,5
											350	76	7,0
									60	50	600	45	9,2
DC3302-6152	Lombardini 25LD330-2	16	3600	1	ELETTRICO 12 V. ELECTRIC 12 V.	CFA604-6152		●	mm.	mm.	100	108	6,0
											180	101	7,5
											350	83	9,0
									60	50	600	49	11,6
DC4772-6152	Lombardini 12LD477-2	23	3600	2	ELETTRICO 12 V. ELECTRIC 12 V.	CFA605-6152		●	mm.	mm.	120	125	10,5
											200	118	12,0
											300	96	14,0
									60	50	600	50	17,0
DC500-5157	Lombardini 15LD500	12	3600	1	AUTOAVVOLGENTE RECOIL STARTING	CFA702-5157L		●	mm.	mm.	200	59,5	6,5
											300	59	7,8
											400	55	9,0
									80	60	750	25	10,5
DC4772-5172	Lombardini 12LD477-2	23	3600	2	ELETTRICO 12 V. ELECTRIC 12 V.	CFA702-5172		●	mm.	mm.	200	76	9,7
											300	74	11,2
											500	67	14,0
									80	60	800	48	16,4
DC400-4198	Lombardini 15LD400	9	3600	1	AUTOAVVOLGENTE RECOIL STARTING	CFA50-4198		●	mm.	mm.	200	47	2,5
											350	44	5,0
											600	35	7,0
									65	50	800	25	7,2
DC440-4202	Lombardini 15LD440	10,5	3600	1	AUTOAVVOLGENTE RECOIL STARTING	CFA50-4202		●	mm.	mm.	200	50	3,9
											350	46	5,8
											600	38	8,0
									65	50	800	28	8,5
DC500-4206	Lombardini 15LD500	12	3600	1	AUTOAVVOLGENTE RECOIL STARTING	CFA50-4206L		●	mm.	mm.	200	54	4,2
											350	50	6,2
											600	42	8,8
									65	50	800	33	9,8
DC350-7180	Lombardini 15LD350	7,5	3600	1	AUTOAVVOLGENTE RECOIL STARTING	CFA2-7180		●	2"	2"	200	45	3,0
											600	38	7,0
											900	28	7,3
											1200	14	7,8
DC315-15139	Lombardini 15LD315	6,8	3600	1	AUTOAVVOLGENTE RECOIL STARTING	CFA3-15139		●	3"	3"	500	21	5,0
											900	18	5,5
											1300	13,5	5,8
											1500	9	6,0
DC400-19139	Lombardini 15LD400	9	3600	1	AUTOAVVOLGENTE RECOIL STARTING	CFA4-19139		●	4"	4"	800	21	5,9
											1200	18,5	6,8
											1600	15	7,3
											2000	8,5	7,5
DC400-25130	Lombardini 15LD400	9	3600	1	AUTOAVVOLGENTE RECOIL STARTING	CFA4-25130		●	4"	4"	1000	18	5,0
											1400	15,5	6,2
											1800	12	6,5
											2200	8	7,5
DC440-25139	Lombardini 15LD440	10,5	3600	1	AUTOAVVOLGENTE RECOIL STARTING	CFA4-25139		●	4"	4"	1000	19,5	6,0
											1400	17	7,0
											2000	12	8,0
											2400	7,8	8,2



MOTOPOMPE DIESEL - Centrifughe
Centrifugal - DIESEL MOTORPUMP



Prestazioni motopompa a: Motorpump performances at:	RPM 3600	Motore: Engine:	Raffreddato ad aria Air cooling
--	-----------------	----------------------------	--

TIPO MOTOPOMPA MOTORPUMP TYPE	CARATTERISTICHE MOTORE - ENGINE FEATURES					MODELLO POMPA PUMP MODEL	TIPO ACCOPPIAMENTO COUPLING TYPE		BOCCHIE POMPA PORTS PUMP		PORTATA DELIVERY L/1'	PREVALENZA HEAD MT	HP ASSORBITI ABSORBED
	MOTORE ENGINE	HP (N)	RPM	N° CILINDRI CYLINDERS	AVVIAMENTO STARTING		GIUNTO JOINT	DIRETTO DIRECT	DNa	DNm			
DC225-35164	Lombardini 15LD225	4,8	3600	1	AUTOAVVOLGENTE RECOIL STARTING	CFA2-35164		●	2"	2"	80 160 200 350	47,5 46 43,5 32,5	2,8 3,5 3,8 4,3
DC315-35174	Lombardini 15LD315	6,8	3600	1	AUTOAVVOLGENTE RECOIL STARTING	CFA2-35174		●	2"	2"	100 120 200 350	56 55 52,5 46	3,7 4,1 5,0 6,0
DC400-35180	Lombardini 15LD400	9,5	3600	1	AUTOAVVOLGENTE RECOIL STARTING	CFA2-35180		●	2"	2"	100 160 200 350	63 59 58 48	4,5 5,8 5,9 7,4
DC225-3140	Lombardini 15LD225	4,8	3600	1	AUTOAVVOLGENTE RECOIL STARTING	CFA2-3140		●	2"	2"	80 200 400 600	36 33 25 14	2,5 3,0 3,6 4,0
DC315-6144	Lombardini 15LD315	6,8	3600	1	AUTOAVVOLGENTE RECOIL STARTING	CFA2-6144		●	2"	2"	80 200 500 700	38 36 28 20	2,5 2,8 4,8 5,6
DC225-12120	Lombardini 15LD225	4,8	3600	1	AUTOAVVOLGENTE RECOIL STARTING	CFA3-12120		●	3"	3"	100 500 800 1050	22,5 21,8 15,8 11,8	3 3,6 4,6 5
DC500-7180	Lombardini 15LD500	12	3600	1	AUTOAVVOLGENTE RECOIL STARTING	CFA2-7180		●	2"	2"	200 500 950 1250	60 51 40 27	6,0 9,0 10,0 10,2



monocilindrici
single cylinder

serie **RY**



RY

Motore Engine	Cilindri Cylinders
RY 50	
RY 70	
RY 70	
RY 70	



tre cilindri
three cylinder

serie **MD**



MD

Motore Engine	Cilindri Cylinders	Potenza kW(CV) Rating kW(HP)			Velocità Speed rpm	Cilindrata Displacement cm ³	Coppia Max Max torque Nm(lb/ft)	Coppia olio Oil sump Nm(lb/ft)	Peso Weight
	N	N	ND	NA					
MD 350	3	26 (35.4)	23.5 (32)	21 (28.6)					
		78 (106)	26 (35.4)	23.5 (32)					



bicilindrici
twin cylinder

serie **MD**



MD

Motore Engine	Cilindri Cylinders	Potenza kW(CV) Rating kW(HP)			Velocità Speed rpm	Cilindrata Displacement cm ³	Coppia Max Max torque Nm(lb/ft)	Coppia olio Oil sump Nm(lb/ft)
	N	N	ND	NA				
MD 150	2	10 (13.6)	9.3 (12.6)	8.6 (11.7)	3000	654	32@2400	
MD 151	2	12 (16.3)	11.2 (15.2)	10.3 (14)	3600	654	32@2400	
	2	12.5 (17)	11.4 (15.5)	10.5 (14.3)	3000	851	41@2400	
	2	14 (19)	13 (17.7)	12 (16.5)	3600	851	41@2400	



Prestazioni motopompa a: Motorpump performances at:	RPM 2600	Motore: Raffreddato ad aria Engine: Air cooling
--	-----------------	--

TIPO MOTOPOMPA MOTORPUMP TYPE	CARATTERISTICHE MOTORE - ENGINE FEATURES					MODELLO POMPA PUMP MODEL	TIPO ACCOPPIAMENTO COUPLING TYPE		BOCCHIE POMPA PORTS PUMP		PORTATA DELIVERY L/1'	PREVALENZA HEAD MT	HP ASSORBITI ABSORBED
	MOTORE ENGINE	HP (N)	RPM	N° CILINDRI CYLINDERS	AVVIAMENTO STARTING		GIUNTO JOINT	DIRETTO DIRECT	DNa	DNm			
DC290-552	Ruggerini RD 290	28	3000	2	ELETTRICO 12 V. ELECTRIC 12 V.	CFA552-6240		●	mm.	mm.	100	110	8,5
											200	108	12,0
									65	55	600	98	18,0
										1000	68	22,7	
DC351-6260	Ruggerini MD 351	38	3600	3	ELETTRICO 12 V. ELECTRIC 12 V.	CFA55-6260R		●	mm.	mm.	120	76,5	13,0
											200	74	14,0
									65	55	700	61,5	21,4
										1000	44,6	24,7	
DC420-6250	Ruggerini SP 420	42	3000	3	ELETTRICO 12 V. ELECTRIC 12 V.	CFA553-6250G		●	mm.	mm.	300	153	18,6
											500	144	25,3
									65	55	700	132	29,3
										1000	95	34,6	
DC420-6260	Ruggerini SP 420	42	3000	3	ELETTRICO 12 V. ELECTRIC 12 V.	CFA552-6260L		●	mm.	mm.	300	124	16,0
											500	120	21,0
									65	55	700	109	25,0
										1000	90	29,0	
DC420-9250	Ruggerini SP 420	42	3000	3	ELETTRICO 12 V. ELECTRIC 12 V.	CFA65-9250T		●	mm.	mm.	700	67,1	23,2
											1000	61,3	28,4
									80	65	1400	48,5	33,7
										1600	40	35,7	
DC151-11196	Ruggerini MD 151	16	3600	2	ELETTRICO 12 V. ELECTRIC 12 V.	CFA50-11196		●	mm.	mm.	800	39	8,5
											1000	36	10,0
									65	50	1400	27	11,5
										1800	16	12,0	
DC211-16180	Ruggerini RD 211	23	3600	2	ELETTRICO 12 V. ELECTRIC 12 V.	CFA80-16180B		●	mm.	mm.	800	31	10,0
											1000	30	11,4
									100	80	1600	24,5	14,0
										2000	19	15,5	
DC351-16210	Ruggerini MD 351	38	3600	3	ELETTRICO 12 V. ELECTRIC 12 V.	CFA80-16210R		●	mm.	mm.	350	47	12,0
											800	45,5	16,0
									100	80	1400	42,5	21,0
										2000	36,5	25,0	
DC420-18210	Ruggerini SP 420	42	3000	3	ELETTRICO 12 V. ELECTRIC 12 V.	CFA80-18210		●	mm.	mm.	1400	44,2	22,0
											1800	41	25,0
									100	80	2500	31,5	29,0
										3000	22	31,0	
DC420-M150AS	Ruggerini SP 420	42	3000	3	ELETTRICO 12 V. ELECTRIC 12 V.	CS-M150AS		●	mm.	mm.	2000	34	28,0
											2500	32,5	29,2
									150	150	3500	29	31,5
										4500	23,5	33,2	

Prestazioni motopompa a: Motorpump performances at:	RPM 2800	Motore: Engine:	Raffreddato ad aria Air cooling
--	-----------------	--------------------	------------------------------------

TIPO MOTO POMPA MOTORPUMP TYPE	CARATTERISTICHE MOTORE - ENGINE FEATURES					MODELLO POMPA PUMP MODEL	TIPO ACCOPPIAMENTO COUPLING TYPE		BOCCHIE POMPA PORTS PUMP		PORTATA DELIVERY L/1'	PREVALENZA HEAD MT	HP ASSORBITI ABSORBED
	MOTORE ENGINE	HP (N)	RPM	N° CILINDRI CYLINDERS	AVVIAMENTO STARTING		GIUNTO JOINT	DIRETTO DIRECT	DNa	DNm			
DC290-9238	Ruggerini RD 290	28	3000	2	ELETTRICO 12 V. ELECTRIC 12 V.	CFA55-9238		●	mm.	mm.	600	67	13,0
											800	64	17,0
									65	55	900	62	19,0
										1200	52	23,0	

Prestazioni motopompa a: Motorpump performances at:	RPM 2900	Motore: Engine:	Raffreddato ad aria Air cooling
--	-----------------	--------------------	------------------------------------

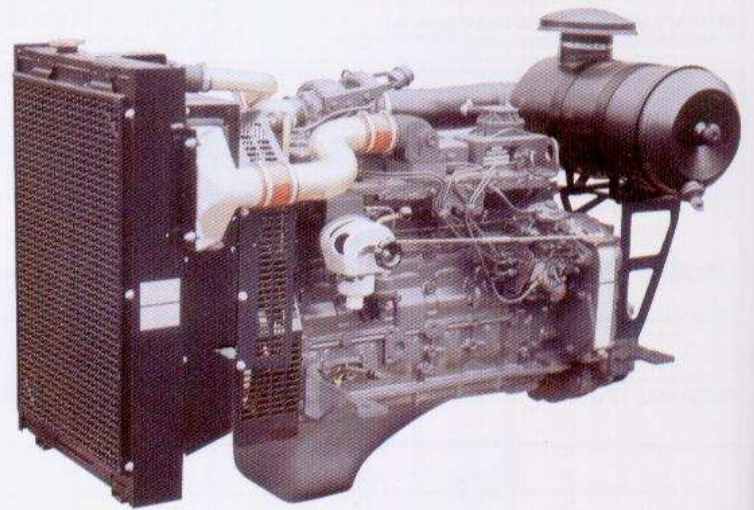
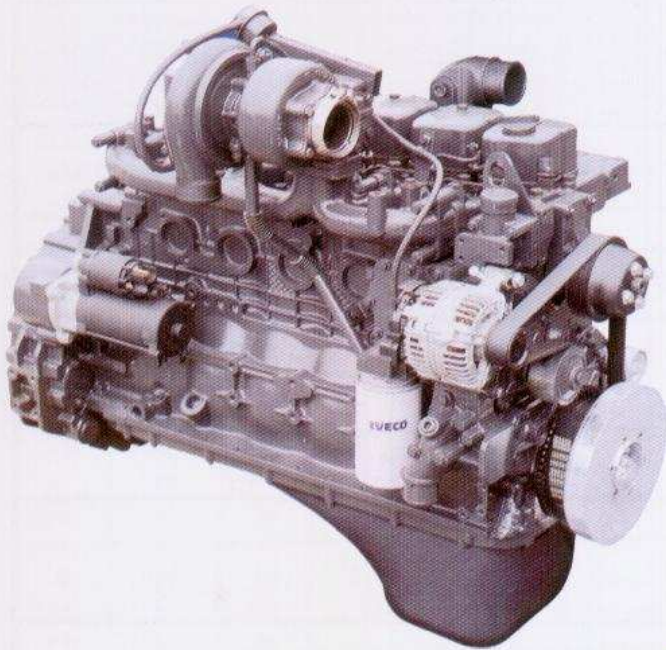
TIPO MOTO POMPA MOTORPUMP TYPE	CARATTERISTICHE MOTORE - ENGINE FEATURES					MODELLO POMPA PUMP MODEL	TIPO ACCOPPIAMENTO COUPLING TYPE		BOCCHIE POMPA PORTS PUMP		PORTATA DELIVERY L/1'	PREVALENZA HEAD MT	HP ASSORBITI ABSORBED
	MOTORE ENGINE	HP (N)	RPM	N° CILINDRI CYLINDERS	AVVIAMENTO STARTING		GIUNTO JOINT	DIRETTO DIRECT	DNa	DNm			
DC110-6190	Ruggerini RY 110	10,5	3600	1	AUTOAVVOLGENTE RECOIL STARTING	CFA50-6190		●	mm.	mm.	100	41	5,0
											200	40	6,0
									65	50	500	36	4,0
										800	25	9,0	
DC125-6195	Ruggerini RY125	12	3600	1	AUTOAVVOLGENTE RECOIL STARTER	CFA50-6195L		●	mm.	mm.	100	41	5,0
											300	39	5,0
									65	50	600	34	8,0
										800	25	9,0	
DC151-6210	Ruggerini MD 151	16	3600	2	ELETTRICO 12 V. ELECTRIC 12 V.	CFA50-6210		●	mm.	mm.	160	52	7,2
											350	49	9,3
									65	50	700	41,5	12,0
										1000	26	14,0	
DC290-6240	Ruggerini RD 290	28	3000	2	ELETTRICO 12 V. ELECTRIC 12 V.	CFA55-6240		●	mm.	mm.	100	76	12,0
											350	72	13,0
									65	55	700	65	19,5
										1000	52	22,0	
DC290-16178	Ruggerini RD 290	28	3000	2	ELETTRICO 12 V. ELECTRIC 12 V.	CFA65-16178		●	mm.	mm.	500	43	9,2
											800	41	12,0
									80	65	1400	32,5	15,0
										1800	23	16,8	
DC290-16180	Ruggerini RD 290	28	3000	2	ELETTRICO 12 V. ELECTRIC 12 V.	CFA80-16180		●	mm.	mm.	500	41	13,5
											900	38,5	14,0
									100	80	1400	35	17,5
										2000	27,5	20,0	
DC290-18180	Ruggerini RD 290	28	3000	2	ELETTRICO 12 V. ELECTRIC 12 V.	CFA80-18180B		●	mm.	mm.	1400	36,5	18,0
											1800	32	20,0
									100	80	2250	25,5	22,0
										2800	13	23,3	
DC420-M65D2S	Ruggerini SP 420	42	3000	3	ELETTRICO 12 V. ELECTRIC 12 V.	CS-M65D2S		●	mm.	mm.	700	70,5	22
											1100	64	27
									80	65	1500	53	31,4
										1700	45	33	

Prestazioni motopompa a: Motorpump performances at:	RPM 3000	Motore: Engine:	Raffreddato ad aria Air cooling
--	-----------------	--------------------	------------------------------------

TIPO MOTOPOMPA MOTORPUMP TYPE	CARATTERISTICHE MOTORE - ENGINE FEATURES					MODELLO POMPA PUMP MODEL	TIPO ACCOPIAMENTO COUPLING TYPE		BOCCHIE POMPA PORTS PUMP		PORTATA DELIVERY L/1'	PREVALENZA HEAD MT	HP ASSORBITI ABSORBED
	MOTORE ENGINE	HP (N)	RPM	N° CILINDRI CYLINDERS	AVVIAMENTO STARTING		GIUNTO JOINT	DIRETTO DIRECT	DNa	DNm			
DC110-6152	Ruggerini RY110	10,5	3600	1	AUTOAVVOLGENTE RECOIL STARTING	CFA602-6152		●	mm. 60	mm. 50	100 200 300 600	64 60 56 30	3,8 6,0 6,0 8,0
DC125-6152	Ruggerini RY125	12	3600	1	AUTOAVVOLGENTE RECOIL STARTING	CFA603-6152		●	mm. 60	mm. 50	100 200 350 600	95 92 76 45	4,5 5,5 7,0 9,2
DC151-6152	Ruggerini MD151	16	3600	2	A FUNE ROPE STARTING	CFA604-6152		●	mm. 60	mm. 50	100 200 350 600	108 101 83 49	6,0 7,0 8,3 11,6
DC211-6152	Ruggerini RD211	23	3600	2	ELETTRICO 12 V. ELECTRIC 12 V.	CFA605-6152		●	mm. 60	mm. 50	120 200 300 600	125 118 96 50	10,5 12,0 14,0 17,0
DC125-5157	Ruggerini RY125	12	3600	1	AUTOAVVOLGENTE RECOIL STARTING	CFA702-5157L		●	mm. 80	mm. 60	200 300 400 750	59,5 59 55 25	6,5 7,8 9,0 10,5
DC211-5172	Ruggerini RD211	23	3600	2	ELETTRICO 12 V. ELECTRIC 12 V.	CFA702-5172LD		●	mm. 80	mm. 60	200 300 500 800	76 74 67 48	9,7 12,0 14,0 16,4
DC103-4198	Ruggerini RY103	9	3600	1	AUTOAVVOLGENTE RECOIL STARTING	CFA50-4198		●	mm. 65	mm. 50	200 350 600 800	47 44 35 25	2,5 5,0 7,0 7,2
DC110-4202	Ruggerini RY110	10,5	3600	1	AUTOAVVOLGENTE RECOIL STARTING	CFA50-4202		●	mm. 65	mm. 50	200 350 600 800	50 46 38 28	3,9 5,8 8,0 8,5
DC125-4206	Ruggerini RY125	12	3600	1	AUTOAVVOLGENTE RECOIL STARTING	CFA50-4206L		●	mm. 65	mm. 50	200 350 600 800	54 50 42 33	4,2 6,2 8,8 9,8
DC75-7180	Ruggerini RY75	7,5	3600	1	AUTOAVVOLGENTE RECOIL STARTING	CFA2-7180		●	2" 2"	2" 2"	200 600 900 1200	45 38 28 14	3,0 7,0 7,3 7,8
DC70-15139	Ruggerini RY70	6,8	3600	1	AUTOAVVOLGENTE RECOIL STARTING	CFA3-15139		●	3" 3"	3" 3"	500 900 1300 1500	21 18 13,5 9	5,0 5,5 5,8 6,0
DC103-19139	Ruggerini RY103	9	3600	1	AUTOAVVOLGENTE RECOIL STARTING	CFA4-19139		●	4" 4"	4" 4"	800 1200 1600 2000	21 18,5 15 8,5	5,9 6,8 7,3 7,5
DC103-25130	Ruggerini RY103	9	3600	1	AUTOAVVOLGENTE RECOIL STARTING	CFA4-25130		●	4" 4"	4" 4"	1000 1400 1800 2200	18 15,5 12 8	5,0 6,2 6,5 7,5
DC110-25139	Ruggerini RY110	10,5	3600	1	AUTOAVVOLGENTE RECOIL STARTING	CFA4-25139		●	4" 4"	4" 4"	1000 1400 2000 2400	19,5 17 12 7,8	6,0 7,0 8,0 8,2

Prestazioni motopompa a: Motorpump performances at:	RPM 3600	Motore: Engine:	Raffreddato ad aria Air cooling
--	-----------------	----------------------------	--

TIPO MOTOPOMPA MOTORPUMP TYPE	CARATTERISTICHE MOTORE - ENGINE FEATURES					MODELLO POMPA PUMP MODEL	TIPO ACCOPPIAMENTO COUPLING TYPE		BOCCHIE POMPA PORTS PUMP		PORTATA DELIVERY L/1'	PREVALENZA HEAD MT	HP ASSORBITI ABSORBED
	MOTORE ENGINE	HP (N)	RPM	N° CILINDRI CYLINDERS	AVVIAMENTO STARTING		GIUNTO JOINT	DIRETTO DIRECT	DNa	DNm			
DC50-35164	Ruggerini RY 50	4,8	3600	1	AUTOAVVOLGENTE RECOIL STARTING	CFA2-35164		●	2"	2"	80	47,5	2,8
											160	46	3,5
											200	43,5	3,8
											350	32,5	4,3
DC70-35174	Ruggerini RY 70	6,8	3600	1	AUTOAVVOLGENTE RECOIL STARTING	CFA2-35174		●	2"	2"	100	56	3,7
											120	55	4,1
											200	52,5	5,0
											350	46	6,0
DC103-35180	Ruggerini RY 103	9,5	3600	1	AUTOAVVOLGENTE RECOIL STARTING	CFA2-35180		●	2"	2"	100	63	4,5
											160	59	5,8
											200	58	5,9
											350	48	7,4
DC50-3140	Ruggerini RY 50	4,8	3600	1	AUTOAVVOLGENTE RECOIL STARTING	CFA2-3140		●	2"	2"	80	36	2,5
											200	33	3,0
											400	25	3,6
											600	14	4,0
DC70-6144	Ruggerini RY 70	6,8	3600	1	AUTOAVVOLGENTE RECOIL STARTING	CFA2-6144		●	2"	2"	80	38	2,5
											200	36	2,8
											500	28	4,8
											700	20	5,6
DC50-12120	Ruggerini RY 50	4,8	3600	1	AUTOAVVOLGENTE RECOIL STARTING	CFA3-12120		●	3"	3"	100	22,5	3,0
											500	21,8	3,6
											800	15,8	4,6
											1050	11,8	5,0
DC125-7180	Ruggerini RY 125	12	3600	1	AUTOAVVOLGENTE RECOIL STARTING	CFA2-7180		●	2"	2"	200	60	6,0
											500	51	9,0
											950	40	10,0
											1250	27	10,2



Raffreddamento ad acqua
Water cooling



Prestazioni motopompa a:
Motorpump performances at:
RPM 1750
Motore: Raffreddato ad acqua
Engine: Water cooling

TIPO MOTOPOMPA MOTORPUMP TYPE	CARATTERISTICHE MOTORE - ENGINE FEATURES					MODELLO POMPA PUMP MODEL	TIPO ACCOPPIAMENTO COUPLING TYPE		BOCCHIE POMPA PORTS PUMP		PORTATA DELIVERY L/1'	PREVALENZA HEAD MT	HP ASSORBITI ABSORBED
	MOTORE ENGINE	HP (N)	RPM	N° CILINDRI CYLINDERS	AVVIAMENTO STARTING		GIUNTO JOINT	DIRETTO DIRECT	DNa	DNm			
DC45MSA-M100CS	IVECO N45MSA	81	2300	4	ELETTRICO 12 V. ELECTRIC 12 V.	CS-M100CS	●		mm. 125	mm. 100	1000 1600 3000 4000	72 68 60 50	42 48 61 69
DC45MSA-M12531ACS	IVECO N45MSA	81	2300	4	ELETTRICO 12 V. ELECTRIC 12 V.	CS-M12531ACS	●		mm. 150	mm. 125	1400 2500 4000 6666	54 53 49 31	35 44 56 68
DC45MSA-M200GS	IVECO N45MSA	81	2300	4	ELETTRICO 12 V. ELECTRIC 12 V.	CS-M200GS	●		mm. 200	mm. 200	5000 6500 8000 10000	27,5 26,2 24 18	48 53 57,4 59
DC45MSA-M15031BCS	IVECO N45MSA	81	2300	4	ELETTRICO 12 V. ELECTRIC 12 V.	CS-M15031BCS	●		mm. 200	mm. 150	2200 4500 6500 8300	46 42 35 25	43 56 65 69
DC45MSA-M25017S	IVECO N45MSA	81	2300	4	ELETTRICO 12 V. ELECTRIC 12 V.	CS-M25017S	●		mm. 250	mm. 250	7000 10000 14000 17000	21,8 21 17,5 12	58 62 66 62
DC45MSA-P803A3S	IVECO N45MSA	81	2300	4	ELETTRICO 12 V. ELECTRIC 12 V.	CS-P803A3S	●		mm. 100	mm. 80	750 1250 1750 2300	117 110 98 76	40 50 58 65
DC45MSA-P804D3S	IVECO N45MSA	81	2300	4	ELETTRICO 12 V. ELECTRIC 12 V.	CS-P804D3S	●		mm. 100	mm. 80	750 1250 1750 2300	135 123 103 70	45 56,5 65 67
DC67MSA-M100BS	IVECO N67MSA	110	2500	6	ELETTRICO 12 V. ELECTRIC 12 V.	CS-M100BS	●		mm. 125	mm. 100	1000 2000 3000 4000	75 71 67 58	38 52 66 77
DC67MSA-M12540CCS	IVECO N67MSA	110	2500	6	ELETTRICO 12 V. ELECTRIC 12 V.	CS-M12540CCS	●		mm. 150	mm. 125	1400 2500 4000 6666	67 65 60 34	45 56 74 88
DC67MSA-M200ES	IVECO N67MSA	110	2500	6	ELETTRICO 12 V. ELECTRIC 12 V.	CS-M200ES	●		mm. 200	mm. 200	5000 6500 8000 10000	33 32 30 25	59 67 72 76
DC67MSA-P1002FS	IVECO N67MSA	110	2500	6	ELETTRICO 12 V. ELECTRIC 12 V.	CS-P1002FS	●		mm. 125	mm. 100	1600 2500 3250 4000	95 86 75 64	55 69 77 82

Prestazioni motopompa a: Motorpump performances at:	RPM 1750	Motore: Engine:	Raffreddato ad acqua Water cooling
--	-----------------	--------------------	---------------------------------------

TIPO MOTOPOMPA MOTORPUMP TYPE	CARATTERISTICHE MOTORE - ENGINE FEATURES					MODELLO POMPA PUMP MODEL	TIPO ACCOPIAMENTO COUPLING TYPE		BOCCHIE POMPA PORTS PUMP		PORTATA DELIVERY L/1'	PREVALENZA HEAD MT	HP ASSORBITI ABSORBED
	MOTORE ENGINE	HP (N)	RPM	N° CILINDRI CYLINDERS	AVVIAMENTO STARTING		GIUNTO JOINT	DIRETTO DIRECT	DNa	DNm			
DC45MSTD20-M100AS	IVECO N45MSTD20	128	2300	4	ELETTRICO 12 V. ELECTRIC 12 V.	CS-M100AS	●		mm. 125	mm. 100	1000 1600 3000 4000	86 84 77 67	48 58 76 92
DC45MSTD20-M12540BCS	IVECO N45MSTD20	128	2300	4	ELETTRICO 12 V. ELECTRIC 12 V.	CS-M12540BCS	●		mm. 150	mm. 125	1400 2500 4000 6666	75 73 68 46	53 68 85 106
DC45MSTD20-M15040CCS	IVECO N45MSTD20	128	2300	4	ELETTRICO 12 V. ELECTRIC 12 V.	CS-M15040CCS	●		mm. 200	mm. 150	2200 4500 6500 8333	66 62 52 34	61 88 101 106
DC45MSTD20-M200320BS	IVECO N45MSTD20	128	2300	4	ELETTRICO 12 V. ELECTRIC 12 V.	CS-M200320BS	●		mm. 250	mm. 200	4166 7500 11600 14000	48 43 33 26	84 106 108 104
DC45MSTD20-P1002DS	IVECO N45MSTD20	128	2300	4	ELETTRICO 12 V. ELECTRIC 12 V.	CS-P1002DS	●		mm. 125	mm. 100	1600 1500 3250 4000	114 106 97 86	65 86 98 109
DC67MSTD23-M12540ACS	IVECO N67MSTD23	163	2300	6	ELETTRICO 12 V. ELECTRIC 12 V.	CS-M12540ACS	●		mm. 150	mm. 125	1400 2500 4000 6666	87 85 81 61	65 76 99 129
DC67MSTD23-P1002AS	IVECO N67MSTD23	163	2300	6	ELETTRICO 12 V. ELECTRIC 12 V.	CS-P1002AS	●		mm. 125	mm. 100	1600 2500 3250 4000	135 126 118 108	79 104 123 136
DC67MSTD23-P1003FS	IVECO N67MSTD23	163	2300	6	ELETTRICO 12 V. ELECTRIC 12 V.	CS-P1003FS	●		mm. 125	mm. 100	1200 2250 3250 4000	156 142 120 109	80 105 127 138
DC67MSTD23-P1502LRS	IVECO N67MSTD23	163	2300	6	ELETTRICO 12 V. ELECTRIC 12 V.	CS-P1502LRS	●		mm. 150	mm. 125	2000 3000 4000 5000	110 107 100 78	80 100 120 134
DC60ENT-M15040ACS	IVECO N60ENT	230	2300	6	ELETTRICO 12 V. ELECTRIC 12 V.	CS-M15040ACS	●		mm. 200	mm. 150	2200 5000 7000 9500	86 82 74 55	85 125 147 162
DC60ENT-M200360BS	IVECO N60ENT	230	2300	6	ELETTRICO 12 V. ELECTRIC 12 V.	CS-M200360BS	●		mm. 250	mm. 200	4166 9100 11600 14000	62 58 52 45	108 147 168 174
DC60ENT-P1003AS	IVECO N60ENT	230	2300	6	ELETTRICO 12 V. ELECTRIC 12 V.	CS-P1003AS	●		mm. 125	mm. 100	1200 2250 3000 4000	187 176 167 148	98 132 156 188
DC60ENT-P1502GRS	IVECO N60ENT	230	2300	6	ELETTRICO 12 V. ELECTRIC 12 V.	CS-P1502GRS	●		mm. 150	mm. 125	2000 3000 4000 5000	133 130 124 110	104 128 153 174

Prestazioni motopompa a:
Motorpump performances at:
RPM 2000
Motore: Raffreddato ad acqua
Engine: Water cooling

TIPO MOTOPOMPA MOTORPUMP TYPE	CARATTERISTICHE MOTORE - ENGINE FEATURES					MODELLO POMPA PUMP MODEL	TIPO ACCOPPIAMENTO COUPLING TYPE		BOCCHIE POMPA PORTS PUMP		PORTATA DELIVERY L/1'	PREVALENZA HEAD MT	HP ASSORBITI ABSORBED
	MOTORE ENGINE	HP (N)	RPM	N° CILINDRI CYLINDERS	AVVIAMENTO STARTING		GIUNTO JOINT	DIRETTO DIRECT	DNa	DNm			
DC45MSA-M100DS	IVECO N45MSA	81	2300	4	ELETTRICO 12 V. ELECTRIC 12 V.	CS-M100DS	●		mm. 125	mm. 100	1200 2000 3000 4000	71 68 65 59	49 56 65 68
DC45MSA-M12531CCS	IVECO N45MSA	81	2300	4	ELETTRICO 12 V. ELECTRIC 12 V.	CS-M12531CCS	●		mm. 150	mm. 125	1400 2500 4000 6666	54 52 48 22	36 48 56 63
DC67MSA-M100CS	IVECO N67MSA	110	2500	6	ELETTRICO 12 V. ELECTRIC 12 V.	CS-M100CS	●		mm. 125	mm. 100	1000 1600 3000 4500	93 89 81 65	60 69 87 102
DC67MSA-M12531ACS	IVECO N67MSA	110	2500	6	ELETTRICO 12 V. ELECTRIC 12 V.	CS-M12531ACS	●		mm. 150	mm. 125	1400 3000 5000 6666	70 69 62 50	51 64 87 96
DC67MSA-P803A3S	IVECO N67MSA	110	2500	6	ELETTRICO 12 V. ELECTRIC 12 V.	CS-P803A3S	●		mm. 100	mm. 80	1000 1500 2000 2300	152 144 130 116	64 74 83 91
DC45MSTD20-M15031BCS	IVECO N45MSTD20	128	2300	4	ELETTRICO 12 V. ELECTRIC 12 V.	CS-M15031BCS	●		mm. 200	mm. 150	2200 4000 8000 10000	59 58 46 29	65 77 98 103
DC45MSTD20-P804D3S	IVECO N45MSTD20	128	2300	4	ELETTRICO 12 V. ELECTRIC 12 V.	CS-P804D3S	●		mm. 100	mm. 80	1000 1500 2000 2300	175 163 141 126	74 88 99 104
DC67MSTD23-M100AS	IVECO N67MSTD23	163	2300	6	ELETTRICO 12 V. ELECTRIC 12 V.	CS-M100AS	●		mm. 125	mm. 100	1200 2000 3000 4500	112 107 102 86	71 86 103 136
DC67MSTD23-M12540BCS	IVECO N67MSTD23	163	2300	6	ELETTRICO 12 V. ELECTRIC 12 V.	CS-M12540BCS	●		mm. 150	mm. 125	1400 3000 4500 6666	98 96 88 70	75 101 126 149
DC67MSTD23-M15031ACS	IVECO N67MSTD23	163	2300	6	ELETTRICO 12 V. ELECTRIC 12 V.	CS-M15031ACS	●		mm. 200	mm. 150	2200 5000 8300 10800	68 67 55 35	70 100 125 135

Prestazioni motopompa a: Motorpump performances at:	RPM 2000	Motore: Engine:	Raffreddato ad acqua Water cooling
--	-----------------	--------------------	---------------------------------------

TIPO MOTOPOMPA MOTORPUMP TYPE	CARATTERISTICHE MOTORE - ENGINE FEATURES					MODELLO POMPA PUMP MODEL	TIPO ACCOPPIAMENTO COUPLING TYPE		BOCCHIE POMPA PORTS PUMP		PORTATA DELIVERY L/1'	PREVALENZA HEAD MT	HP ASSORBITI ABSORBED
	MOTORE ENGINE	HP (N)	RPM	N° CILINDRI CYLINDERS	AVVIAMENTO STARTING		GIUNTO JOINT	DIRETTO DIRECT	DNa	DNm			
DC67MSTD23-P804C3S	IVECO N67MSTD23	163	2300	6	ELETTRICO 12 V. ELECTRIC 12 V.	CS-P804C3S	●		mm. 100	mm. 80	1000 1250 1750 2300	179 174 159 131	76 84 96 108
DC67MSTD23-P1002ES	IVECO N67MSTD23	163	2300	6	ELETTRICO 12 V. ELECTRIC 12 V.	CS-P1002ES	●		mm. 125	mm. 100	1600 2750 3250 4000	141 129 128 119	92 129 135 142
DC60ENT-M12540ACS	IVECO N60ENT	230	2300	6	ELETTRICO 12 V. ELECTRIC 12 V.	CS-M12540ACS	●		mm. 150	mm. 125	1400 2500 4000 6666	113 111 109 87	94 109 138 175
DC60ENT-M15040BCS	IVECO N60ENT	230	2300	6	ELETTRICO 12 V. ELECTRIC 12 V.	CS-M15040BCS	●		mm. 200	mm. 150	2200 4000 6500 8333	98 95 85 74	103 131 169 183
DC60ENT-P1002BS	IVECO N60ENT	230	2300	6	ELETTRICO 12 V. ELECTRIC 12 V.	CS-P1002BS	●		mm. 125	mm. 100	1600 2750 3500 4500	166 157 145 129	109 143 165 190

Cadoppi

Motopompe Centrifughe - Diesel
Diesel Centrifugal Motorpumps



INDUSTRIALI PER ECCELLENZA...

in ridotta manutenzione e lunga durata.

SUN



Raffreddamento ad aria
Air cooling

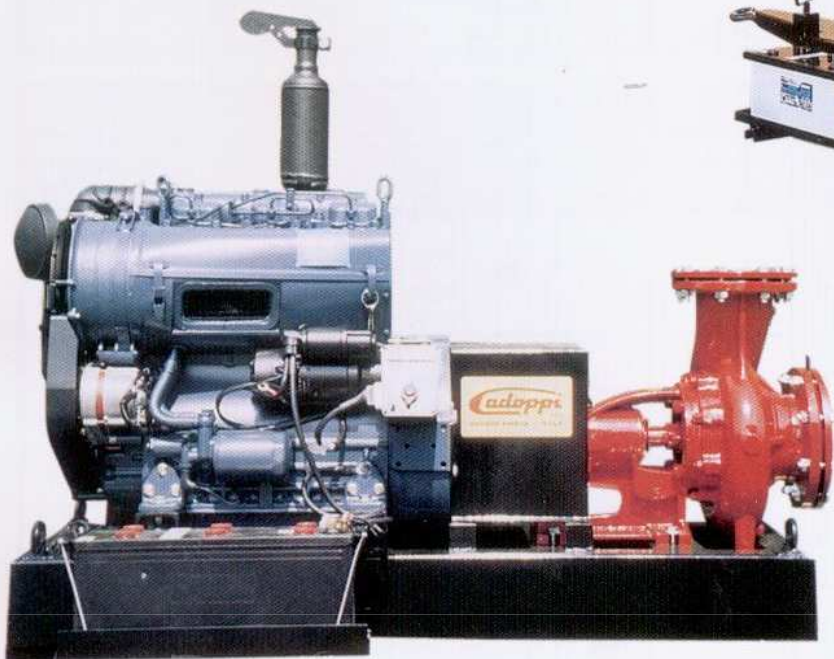
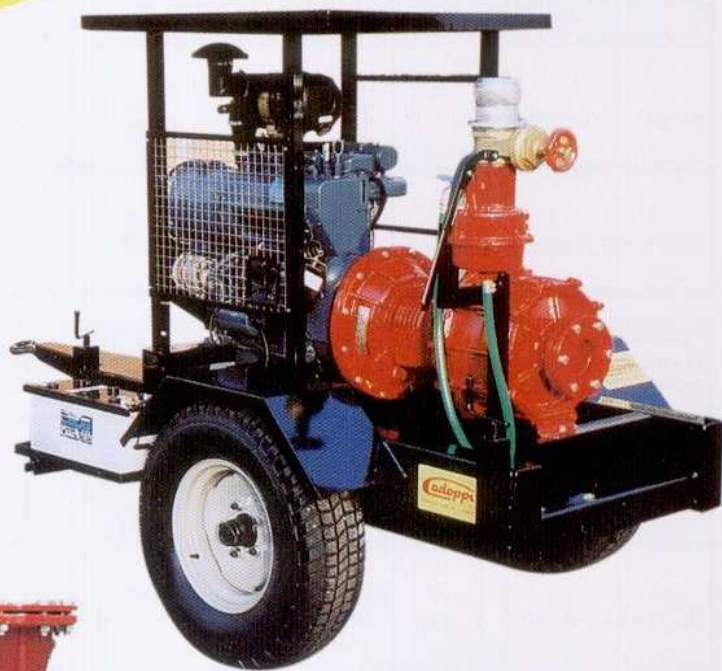
profondità
iposta che
agricoltori.
o, in ogni
ti ad aria
o giorno.

Caratter

Motori diesel

Mo

rs



Prestazioni motopompa a: Motorpump performances at:	RPM 1450	Motore: Engine:	Raffreddato ad aria Air cooling
--	-----------------	--------------------	------------------------------------

TIPO MOTOPOMPA MOTORPUMP TYPE	CARATTERISTICHE MOTORE - ENGINE FEATURES					MODELLO POMPA PUMP MODEL	TIPO ACCOPPIAMENTO COUPLING TYPE		BOCCHIE POMPA PORTS PUMP		PORTATA DELIVERY L/1'	PREVALENZA HEAD MT	HP ASSORBITI ABSORBED
	MOTORE ENGINE	HP (N)	RPM	N° CILINDRI CYLINDERS	AVVIAMENTO STARTING		GIUNTO JOINT	DIRETTO DIRECT	DNa	DNm			
DC3105TE2-P804C3	VM 3105TE2	60	2300	3	ELETTRICO 12 V. ELECTRIC 12 V.	CS-P804C3S	●		mm. 100	mm. 80	750 1250 1750 2000	95 79 59 52	30,5 36,4 38,4 44,0
DC3105E2-P803B3S	VM 3105 E2	48	2300	3	ELETTRICO 12 V. ELECTRIC 12 V.	CS-P803B3S	●		mm. 100	mm. 80	750 1250 1750 2300	76,5 70 55 34	24,0 30,0 35,0 38,0
DC3105E2-M100CS	VM 3105 E2	48	2300	3	ELETTRICO 12 V. ELECTRIC 12 V.	CS-M100CS	●		mm. 125	mm. 100	1000 1600 2500 3250	38 36 34 30,5	18,5 22,0 26,0 28,0
DC4105TE2-P1002DS	VM 4105TE2	95	2300	4	ELETTRICO 12 V. ELECTRIC 12 V.	CS-P1002DS	●		mm. 125	mm. 100	1200 2000 2800 3450	82 75 68 53	39,0 75,0 56,0 64,0
DC4105TE2-M100AS	VM 4105TE2	95	2300	4	ELETTRICO 12 V. ELECTRIC 12 V.	CS-M100AS	●		mm. 125	mm. 100	1000 1600 2500 3500	60 57 54 47	28,0 35,0 44,0 53,0
DC3105E2-M200FS	VM 3105E2	48	2300	3	ELETTRICO 12 V. ELECTRIC 12 V.	CS-M200FS	●		mm. 200	mm. 200	4000 5500 7000 9000	19,8 18,9 17,2 13,4	28,3 32,1 35,3 37,2
DC3105E2-M25014S	VM 3105E2	48	2300	3	ELETTRICO 12 V. ELECTRIC 12 V.	CS-M25014S	●		mm. 250	mm. 250	5500 7000 12000 14000	15 14,9 11,4 8,4	32,8 34,2 37,0 35,0

Prestazioni motopompa a: Motorpump performances at:	RPM 1750	Motore: Engine:	Raffreddato ad aria Air cooling
--	-----------------	--------------------	------------------------------------

TIPO MOTOPOMPA MOTORPUMP TYPE	CARATTERISTICHE MOTORE - ENGINE FEATURES					MODELLO POMPA PUMP MODEL	TIPO ACCOPPIAMENTO COUPLING TYPE		BOCCHIE POMPA PORTS PUMP		PORTATA DELIVERY L/1'	PREVALENZA HEAD MT	HP ASSORBITI ABSORBED
	MOTORE ENGINE	HP (N)	RPM	N° CILINDRI CYLINDERS	AVVIAMENTO STARTING		GIUNTO JOINT	DIRETTO DIRECT	DNa	DNm			
DC3105E2-9330V	VM 3105E2	48	2300	3	ELETTRICO 12 V. ELECTRIC 12 V.	CFA802-9330V	●		mm. 100	mm. 80	700 1000 1600 2000	83 81 69 61	28,0 32,5 42,0 44,0
DC4105TE2-9330	VM 4105RE2	95	2100	4	ELETTRICO 12 V. ELECTRIC 12 V.	CFA803-9330	●		mm. 100	mm. 80	800 1400 1800 2200	117 110 98 76	40,0 50,0 57,5 65,0
DC4105TE2-P804C3S	VM 4105RE2	95	2100	4	ELETTRICO 12 V. ELECTRIC 12 V.	CS-P804C3S	●		mm. 100	mm. 80	750 1250 1750 2300	137 125 106 71	45,5 58 65,4 68
DC3105TE2-M100D	VM 3105TE2	60	2300	3	ELETTRICO 12 V. ELECTRIC 12 V.	CS-M100DS	●		mm. 125	mm. 100	1000 2000 3000 3800	41,8 39,6 36,5 32	21,0 29,0 38,0 43,0

Prestazioni motopompa a: Motorpump performances at:	RPM 1750	Motore: Engine:	Raffreddato ad aria Air cooling
--	-----------------	--------------------	------------------------------------

TIPO MOTOPOMPA MOTORPUMP TYPE	CARATTERISTICHE MOTORE - ENGINE FEATURES					MODELLO POMPA PUMP MODEL	TIPO ACCOPPIAMENTO COUPLING TYPE		BOCCHIE POMPA PORTS PUMP		PORTATA DELIVERY L/1'	PREVALENZA HEAD MT	HP ASSORBITI ABSORBED
	MOTORE ENGINE	HP (N)	RPM	N° CILINDRI CYLINDERS	AVVIAMENTO STARTING		GIUNTO JOINT	DIRETTO DIRECT	DNa	DNm			
DC4105TE2-M100B	VM 4105TE2	95	2100	4	ELETTRICO 12 V. ELECTRIC 12 V.	CS-M100BS	●		mm.	mm.	1000	74,5	38,0
									125	100	2000	71	52,0
											3000	66,5	66,0
											4000	58	77,0
DC4105TE2-M25017	VM 4105TE2	95	2100	4	ELETTRICO 12 V. ELECTRIC 12 V.	CS-M25017S	●		mm.	mm.	7000	21,8	4,48
									250	250	9000	21,4	60,4
											14000	17,4	65,8
											17000	12,3	62,0
DC4105TE2-M450850DS	VM 4105TE2	95	2100	4	ELETTRICO 12 V. ELECTRIC 12 V.	CS-M450850DS (RPM 850)	●		mm.	mm.	14000	14	69
									450	400	20000	11,8	58
											28000	7,5	47
											34000	4	45

Prestazioni motopompa a: Motorpump performances at:	RPM 1800	Motore: Engine:	Raffreddato ad aria Air cooling
--	-----------------	--------------------	------------------------------------

TIPO MOTOPOMPA MOTORPUMP TYPE	CARATTERISTICHE MOTORE - ENGINE FEATURES					MODELLO POMPA PUMP MODEL	TIPO ACCOPPIAMENTO COUPLING TYPE		BOCCHIE POMPA PORTS PUMP		PORTATA DELIVERY L/1'	PREVALENZA HEAD MT	HP ASSORBITI ABSORBED
	MOTORE ENGINE	HP (N)	RPM	N° CILINDRI CYLINDERS	AVVIAMENTO STARTING		GIUNTO JOINT	DIRETTO DIRECT	DNa	DNm			
DC3105TE2-M200IS	VM 3105TE2	60	2300	3	ELETTRICO 12 V. ELECTRIC 12 V.	CS-M200IS	●		mm.	mm.	5000	20,7	37,0
									200	200	7000	18,6	42,0
											8000	16,8	43,7
											10000	9,8	43,7
DC4105TE2-M200E	VM 4105TE2	95	2100	4	ELETTRICO 12 V. ELECTRIC 12 V.	CS-M200ES	●		mm.	mm.	5000	32,7	58,5
									200	200	7000	31,7	68,5
											8000	30,5	72,0
											10000	25	76,0

Prestazioni motopompa a: Motorpump performances at:	RPM 2000	Motore: Engines:	Raffreddato ad aria Air cooling
--	-----------------	---------------------	------------------------------------

TIPO MOTOPOMPA MOTORPUMP TYPE	CARATTERISTICHE MOTORE - ENGINE FEATURES					MODELLO POMPA PUMP MODEL	TIPO ACCOPPIAMENTO COUPLING TYPE		BOCCHIE POMPA PORTS PUMP		PORTATA DELIVERY L/1'	PREVALENZA HEAD MT	HP ASSORBITI ABSORBED
	MOTORE ENGINE	HP (N)	RPM	N° CILINDRI CYLINDERS	AVVIAMENTO STARTING		GIUNTO JOINT	DIRETTO DIRECT	DNa	DNm			
DC3105TE2-9310	VM 3105TE2	60	2300	3	ELETTRICO 12 V. ELECTRIC 12 V.	CFA802-9310		●	mm.	mm.	1000	98	41,0
									100	80	1400	92	45,0
											1800	82	54,0
											2200	70	56,0
DC4105TE2-M150KAO	VM 4105TE2	95	2100	4	ELETTRICO 12 V. ELECTRIC 12 V.	CS-M150KAO	●		mm.	mm.	2250	59	44,0
									150	125	3250	57	54,8
											4250	52	65,0
											5500	36,3	73,8

Prestazioni motopompa a: Motorpump performances at:	RPM 2200	Motori: Engines:	Raffreddato ad aria Air cooling
--	-----------------	-----------------------------------	--

TIPO MOTOPOMPA MOTORPUMP TYPE	CARATTERISTICHE MOTORE - ENGINE FEATURES					MODELLO POMPA PUMP MODEL	TIPO ACCOPPIAMENTO COUPLING TYPE		BOCCHIE POMPA PORTS PUMP		PORTATA DELIVERY L/1'	PREVALENZA HEAD MT	HP ASSORBITI ABSORBED
	MOTORE ENGINE	HP (N)	RPM	N° CILINDRI CYLINDERS	AVVIAMENTO STARTING		GIUNTO JOINT	DIRETTO DIRECT	DNa	DNm			
DC2105E2-652	VM 2105E2	35	2300	2	ELETTRICO 12 V. ELECTRIC 12 V.	CFA652-9260V		●	mm. 80	mm. 65	500 700 900 1200	84 82 77 67	20 23 26 30,5
DC3105TE2-9330	VM 3105TE2	60	2300	3	ELETTRICO 12 V. ELECTRIC 12 V.	CFA80-9330		●	mm. 100	mm. 80	700 1000 1800 2200	80,6 80 72,5 65	32,0 36,5 47,5 52,0
DC2105E2-6260V	VM 2105E2	35	2300	2	ELETTRICO 12 V. ELECTRIC 12 V.	CFA553-6260V		●	mm. 65	mm. 55	300 500 700 900	121 112 98 71	15 19 23 26
DC3105E2-P554AS	VM 3105E2	48	2300	3	ELETTRICO 12 V. ELECTRIC 12 V.	CS-P554AS		●	mm. 65	mm. 55	300 500 700 900	162 145 128 100	19 26 32 38
DC3105E2-P654D2S	VM SUN 3105	63	2600	3	ELETTRICO 12 V. ELECTRIC 12 V.	CS-P654D2S		●	mm. 80	mm. 65	500 700 900 1200	135 132 124 107	32 37 42 48
DC2105E2-9260	VM 2105E2	35	2300	2	ELETTRICO 12 V. ELECTRIC 12 V.	CFA65-9260K		●	mm. 80	mm. 65	350 700 1000 1400	52 50 46 36	13 15 18 22
DC2105E2-18258	VM 2105E2	35	2300	2	ELETTRICO 12 V. ELECTRIC 12 V.	CFA80-18258		●	mm. 100	mm. 80	1000 2000 2400 3000	51 49 48 42	21 26 29 34
DC2105E2-M150AS	VM 2105E2	35	2300	2	ELETTRICO 12 V. ELECTRIC 12 V.	CS-M150AS		●	mm. 150	mm. 150	2000 2800 3600 4500	27 26 21 16	20 23 24 25



Motopompe Centrifughe - Diesel Diesel Centrifugal Motorpumps

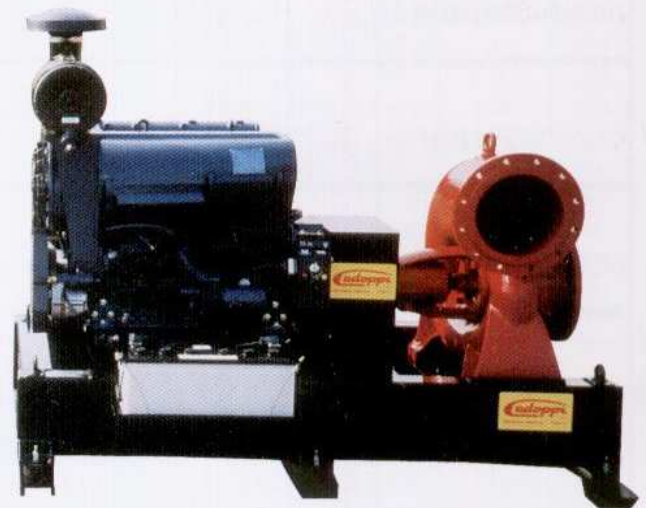
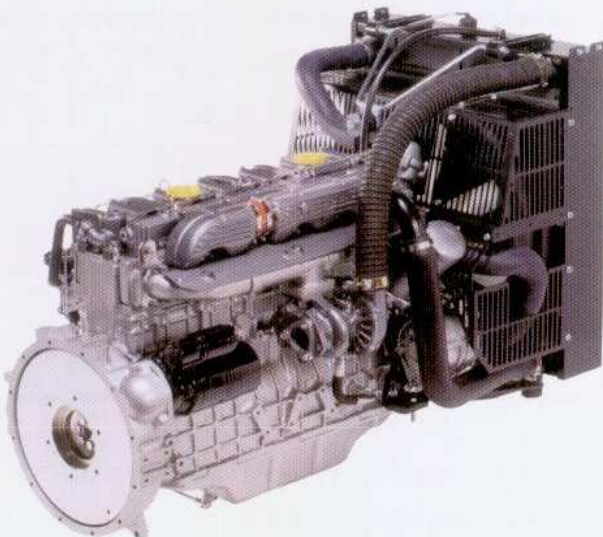


Gruppi elettrogeni - Motopompe - Motosaldatrici
refrigeratori - Centraline oleodinamiche
velocità costante

Diesel Engine for: Generating Set
Gas Compressors - Ref



Raffreddamento ad acqua
Water cooling



Prestazioni motopompa a:
Motorpump performances at:
RPM 1450
Motore: Raffreddato ad acqua
Engine: Water cooling

TIPO MOTOPOMPA MOTORPUMP TYPE	CARATTERISTICHE MOTORE - ENGINE FEATURES					MODELLO POMPA PUMP MODEL	TIPO ACCOPIAMENTO COUPLING TYPE		BOCCHIE POMPA PORTS PUMP		PORTATA DELIVERY L/1'	PREVALENZA HEAD MT	HP ASSORBITI ABSORBED
	MOTORE ENGINE	HP (N)	RPM	N° CILINDRI CYLINDERS	AVVIAMENTO STARTING		GIUNTO JOINT	DIRETTO DIRECT	DNa	DNm			
DC703TE2-P804C3S	VM D703TE2	63	2300	3	ELETTRICO 12 V. ELECTRIC 12 V.	CS-P804C3S	●		mm. 100	mm. 80	750 1250 1750 2000	95 79 59 52	30,5 36,4 38,4 44,0
DC703E2-P803D3S	VM D703E2	45	2300	3	ELETTRICO 12 V. ELECTRIC 12 V.	CS-P803D3S	●		mm. 100	mm. 80	750 1250 1750 2300	74 65 50 28	23 28 33 35
DC703E2-M100DS	VM D703E2	45	2300	3	ELETTRICO 12 V. ELECTRIC 12 V.	CS-M100DS	●		mm. 125	mm. 100	1000 1600 2500 3250	38 36 34 30,5	18,5 22,0 26,0 28,0
DC754TE2-P1002DS	VM D754TE2	89	2300	4	ELETTRICO 12 V. ELECTRIC 12 V.	CS-P1002DS	●		mm. 125	mm. 100	1200 2000 2800 3450	82 75 68 53	39,0 75,0 56,0 64,0
DC754TE2-M100AS	VM D754TE2	89	2300	4	ELETTRICO 12 V. ELECTRIC 12 V.	CS-M100AS	●		mm. 125	mm. 100	1000 1600 2500 3500	60 57 54 47	28,0 35,0 44,0 53,0
DC706IE2-P1003CS	VM D706IE2	133	2300	6	ELETTRICO 12 V. ELECTRIC 12 V.	CS-P1003CS	●		mm. 125	mm. 100	1200 2000 2750 3500	119 110 99 79	55,0 73,0 95,0 95,0
DC706IE2-P1502GR	VM D706IE2	133	2300	6	ELETTRICO 12 V. ELECTRIC 12 V.	CS-P1502GRS	●		mm. 150	mm. 125	2000 3000 3600 4700	86 83 78 56	60 76 87 96
DC703TE2-M200FS	VM D703TE2	63	2300	3	ELETTRICO 12 V. ELECTRIC 12 V.	CS-M200FS	●		mm. 200	mm. 200	4000 5500 7000 9000	19,8 18,9 17,2 13,4	28,3 32,1 35,3 37,2
DC703TE2-M25014S	VM D703TE2	63	2300	3	ELETTRICO 12 V. ELECTRIC 12 V.	CS-M25014S	●		mm. 250	mm. 250	5500 7000 12000 14000	15 14,9 11,4 8,4	32,8 34,2 37,0 35,0
DC706IE2-M501650DS	VM D706IE2	133	2003	6	ELETTRICO 12 V. ELECTRIC 12 V.	CS-M501650DS (RPM 650)	●		mm. 500	mm. 450	17500 25000 35000 45000	11 9 6,5 2	60 60 58 40
DC754TE2-M450750DS	VM D754IE2	89	2300	4	ELETTRICO 12 V. ELECTRIC 12 V.	CS-M450750DS (RPM 750)	●		mm. 450	mm. 400	12000 18000 24000 30000	11 9 6 3	42 37 33 32
DC706IE2-M501750DS	VM D706IE2	133	2300	6	ELETTRICO 12 V. ELECTRIC 12 V.	CS-M501750DS (RPM 750)	●		mm. 500	mm. 450	20000 30000 40000 50000	14 12 9 4	100 90 85 61

Prestazioni motopompa a: Motorpump performances at:	RPM 1750	Motore: Engine:	Raffreddato ad acqua Water cooling
---	-----------------	----------------------------------	---

TIPO MOTOPOMPA MOTORPUMP TYPE	CARATTERISTICHE MOTORE - ENGINE FEATURES					MODELLO POMPA PUMP MODEL	TIPO ACCOPPIAMENTO COUPLING TYPE		BOCCHIE POMPA PORTS PUMP		PORTATA DELIVERY L/1'	PREVALENZA HEAD MT	HP ASSORBITI ABSORBED
	MOTORE ENGINE	HP (N)	RPM	N° CILINDRI CYLINDERS	AVVIAMENTO STARTING		GIUNTO JOINT	DIRETTO DIRECT	DNa	DNm			
DC703TE2-9330V	VM D703TE2	63	2300	3	ELETTRICO 12 V. ELECTRIC 12 V.	CFA802-9330V		●	mm. 100	mm. 80	700 1000 1600 2000	83 81 69 61	28,0 32,5 42,0 44,0
DC754TE2-9330	VM D754TE2	89	2300	4	ELETTRICO 12 V. ELECTRIC 12 V.	CFA803-9330		●	mm. 100	mm. 80	800 1400 1800 2200	117 110 98 76	40,0 50,0 57,5 65,0
DC754TE2-P804C3S	VM D754TE2	89	2300	4	ELETTRICO 12 V. ELECTRIC 12 V.	CS-P804C3S		●	mm. 100	mm. 80	750 1250 1750 2300	137 125 106 71	45,5 58 65,4 68
DC703TE2-M100DS	VM D703TE2	63	2300	3	ELETTRICO 12 V. ELECTRIC 12 V.	CS-M100DS		●	mm. 125	mm. 100	1000 2000 3000 3800	41,8 39,6 36,5 32	21,0 29,0 38,0 43,0
DC754TE2-M100BS	VM D754TE2	89	2300	4	ELETTRICO 12 V. ELECTRIC 12 V.	CS-M100BS		●	mm. 125	mm. 100	1000 2000 3000 4000	74,5 71 66,5 58	38,0 52,0 66,0 77,0
DC706IE2-P1002CS	VM D706IE2	133	2300	6	ELETTRICO 12 V. ELECTRIC 12 V.	CS-P1002BS		●	mm. 125	mm. 100	1600 2400 3200 4000	116 108 101 93	68 89 105 117
DC754TE2-M25017S	VM D754TE2	89	2300	4	ELETTRICO 12 V. ELECTRIC 12 V.	CS-M25017S		●	mm. 250	mm. 250	7000 9000 14000 17000	21,8 21,4 17,4 12,3	4,48 60,4 65,8 62,0
DC706IE2-M450950DS	VM D706IE2	133	2300	6	ELETTRICO 12 V. ELECTRIC 12 V.	CS-M450950DS (RPM 950)		●	mm. 450	mm. 400	16000 24000 30000 38000	18 13,8 10 5	100 90,5 88 74
DC754TE2-M450850D	VM D754TE2	89	2300	4	ELETTRICO 12 V. ELECTRIC 12 V.	CS-M450850DS (RPM 850)		●	mm. 450	mm. 400	14000 20000 28000 34000	14 11,8 7,5 4	69 58 47 45

Prestazioni motopompa a: Motorpump performances at:	RPM 1800	Motore: Engine:	Raffreddato ad acqua Water cooling
---	-----------------	----------------------------------	---

TIPO MOTOPOMPA MOTORPUMP TYPE	CARATTERISTICHE MOTORE - ENGINE FEATURES					MODELLO POMPA PUMP MODEL	TIPO ACCOPPIAMENTO COUPLING TYPE		BOCCHIE POMPA PORTS PUMP		PORTATA DELIVERY L/1'	PREVALENZA HEAD MT	HP ASSORBITI ABSORBED
	MOTORE ENGINE	HP (N)	RPM	N° CILINDRI CYLINDERS	AVVIAMENTO STARTING		GIUNTO JOINT	DIRETTO DIRECT	DNa	DNm			
DC706IE2-M150KE	VM D706IE2	133	2300	6	ELETTRICO 12 V. ELECTRIC 12 V.	CS-M150KE		●	mm. 150	mm. 125	2500 3250 3750 4750	93 92 89 77	88,0 97,7 107,0 118,0
DC706IE2-P1502MRS	VM D706IE2	133	2300	6	ELETTRICO 12 V. ELECTRIC 12 V.	CS-P1502MRS		●	mm. 150	mm. 125	2000 3000 4000 5000	102 98 90 68	73,0 90,5 109,0 120,0

Prestazioni motopompa a: Motorpump performances at:	RPM 1800	Motore: Engine:	Raffreddato ad acqua Water cooling
--	-----------------	--------------------	---------------------------------------

TIPO MOTOPOMPA MOTORPUMP TYPE	CARATTERISTICHE MOTORE - ENGINE FEATURES					MODELLO POMPA PUMP MODEL	TIPO ACCOPPIAMENTO COUPLING TYPE		BOCCHIE POMPA PORTS PUMP		PORTATA DELIVERY L/1'	PREVALENZA HEAD MT	HP ASSORBITI ABSORBED	
	MOTORE ENGINE	HP (N)	RPM	N° CILINDRI CYLINDERS	AVVIAMENTO STARTING		GIUNTO JOINT	DIRETTO DIRECT	DNa	DNm				
DC703TE2-M200IS	VM D703TE2	63	2300	3	ELETTRICO 12 V. ELECTRIC 12 V.	CS-M200IS	●		mm.	mm.	5000	20,7	37,0	
									200	200	7000			42,0
											8000			43,7
											10000			43,7
DC754TE2-M200ES	VM D754TE2	89	2300	4	ELETTRICO 12 V. ELECTRIC 12 V.	CS-M200ES	●		mm.	mm.	5000	32,7	58,5	
									200	200	7000			68,5
											8000			72,0
											10000			76,0

Prestazioni motopompa a: Motorpump performances at:	RPM 2000	Motore: Engines:	Raffreddato ad acqua Water cooling
--	-----------------	---------------------	---------------------------------------

TIPO MOTOPOMPA MOTORPUMP TYPE	CARATTERISTICHE MOTORE - ENGINE FEATURES					MODELLO POMPA PUMP MODEL	TIPO ACCOPPIAMENTO COUPLING TYPE		BOCCHIE POMPA PORTS PUMP		PORTATA DELIVERY L/1'	PREVALENZA HEAD MT	HP ASSORBITI ABSORBED	
	MOTORE ENGINE	HP (N)	RPM	N° CILINDRI CYLINDERS	AVVIAMENTO STARTING		GIUNTO JOINT	DIRETTO DIRECT	DNa	DNm				
DC703TE2-P654A2S	VM D703TE2	63	2300	3	ELETTRICO 12 V. ELECTRIC 12 V.	CS-P654A2S	●		mm.	mm.	500	125	27,5	
									80	65	700			33,0
											900			39,0
											1200			44,5
DC703TE2-9310	VM D703TE2	63	2300	3	ELETTRICO 12 V. ELECTRIC 12 V.	CFA802-9310	●		mm.	mm.	1000	98	41,0	
									100	80	1400			45,0
											1800			54,0
											2200			56,0
DC754TE2-802	VM D754TE2	89	2300	4	ELETTRICO 12 V. ELECTRIC 12 V.	CFA802-9330	●		mm.	mm.	1000	108	46,0	
									100	80	1400			54,0
											1800			59,0
											2200			65,0
DC706IE2-P804C3S	VM D706IE2	133	2300	6	ELETTRICO 12 V. ELECTRIC 12 V.	CS-P804C3S	●		mm.	mm.	1000	179	76,0	
									100	80	1500			90,0
											2000			102
											2300			108
DC706IE2-9330	VM D706IE2	133	2300	6	ELETTRICO 12 V. ELECTRIC 12 V.	CFA803-9330	●		mm.	mm.	1000	152	64,0	
									100	80	1600			75,0
											2000			83,0
											2400			91,0
DC754TE2-M100DS	VM D754TE2	89	2300	4	ELETTRICO 12 V. ELECTRIC 12 V.	CS-M100DS	●		mm.	mm.	1200	71	0,00	
									125	100	2250			58
											3250			66
											4000			68
DC706IE2-M100BS	VM D706IE2	133	2300	6	ELETTRICO 12 V. ELECTRIC 12 V.	CS-M100BS	●		mm.	mm.	1200	97	62	
									125	100	2250			76
											3500			98
											4500			117
DC754TE2-M150KAO	VM D754TE2	89	2300	4	ELETTRICO 12 V. ELECTRIC 12 V.	CS-M150KAO	●		mm.	mm.	2250	59	44,0	
									150	125	3250			54,8
											4250			65,0
											5500			73,8
DC706IE2-M150KAM	VM D706IE2	133	2300	6	ELETTRICO 12 V. ELECTRIC 12 V.	CS-M150KAM	●		mm.	mm.	2250	70	56	
									150	125	3250			70
											4250			83
											5500			94

Prestazioni motopompa a: Motorpump performances at:	RPM 2000	Motori: Engines:	Raffreddato ad acqua Water cooling
--	-----------------	---------------------	---------------------------------------

TIPO MOTOPOMPA MOTORPUMP TYPE	CARATTERISTICHE MOTORE - ENGINE FEATURES					MODELLO POMPA PUMP MODEL	TIPO ACCOPPIAMENTO COUPLING TYPE		BOCCHIE POMPA PORTS PUMP		PORTATA DELIVERY L/1'	PREVALENZA HEAD MT	HP ASSORBITI ABSORBED
	MOTORE ENGINE	HP (N)	RPM	N° CILINDRI CYLINDERS	AVVIAMENTO STARTING		GIUNTO JOINT	DIRETTO DIRECT	DNa	DNm			
DC706IE2-M651420DS	VM D706IE2	133	2300	6	ELETTRICO 12 V. ELECTRIC 12 V.	CS-M651420DS (RPM 420)	●		mm. 650	mm. 600	20000 40000 50000 60000	8 6 4 2	78 75 68 45

Prestazioni motopompa a: Motorpump performances at:	RPM 2200	Motori: Engines:	Raffreddato ad acqua Water cooling
--	-----------------	---------------------	---------------------------------------

TIPO MOTOPOMPA MOTORPUMP TYPE	CARATTERISTICHE MOTORE - ENGINE FEATURES					MODELLO POMPA PUMP MODEL	TIPO ACCOPPIAMENTO COUPLING TYPE		BOCCHIE POMPA PORTS PUMP		PORTATA DELIVERY L/1'	PREVALENZA HEAD MT	HP ASSORBITI ABSORBED
	MOTORE ENGINE	HP (N)	RPM	N° CILINDRI CYLINDERS	AVVIAMENTO STARTING		GIUNTO JOINT	DIRETTO DIRECT	DNa	DNm			
DC703TE2-P654A2S	VM D703TE2	63	2300	3	ELETTRICO 12 V. ELECTRIC 12 V.	CS-P654A2S	●		mm. 80	mm. 65	500 700 900 1200	150 147 137 119	0.00 41 46 54
DC703TE2-P802H3S	VM D703TE2	63	2300	3	ELETTRICO 12 V. ELECTRIC 12 V.	CS-P802-H3S	●		mm. 100	mm. 80	1170 1600 1850 2000	90 82 75 65	39 48 51 52
DC703E2-P554AS	VM D703E2	45	2300	3	ELETTRICO 12 V. ELECTRIC 12 V.	CS-P554AS	●		mm. 65	mm. 55	300 500 700 900	162 145 128 100	19 26 32 37
DC703TE2-M80A3S	VM D703TE2	63	2300	3	ELETTRICO 12 V. ELECTRIC 12 V.	CS-M80A3S	●		mm. 65	mm. 55	700 1200 1800 2250	81 78 72 65	32 40 47 52
DC703E2-M80E3S	VM D703E2	45	2300	3	ELETTRICO 12 V. ELECTRIC 12 V.	CS-M80E3S	●		mm. 100	mm. 80	700 1200 1800 2250	65 62 55 48	24 30 37 40
DC703E2-M80A4S	VM D703E2	45	2300	3	ELETTRICO 12 V. ELECTRIC 12 V.	CS-M80A4S	●		mm. 100	mm. 80	1000 2000 2400 3000	59 57 55 49	26 31 37 42
DC703TE2-M12525BCS	VM D703TE2	63	2003	3	ELETTRICO 12 V. ELECTRIC 12 V.	CS-M12525BCS	●		mm. 150	mm. 125	1400 2500 4160 7500	47 46 44 20	0.00 42 51 58