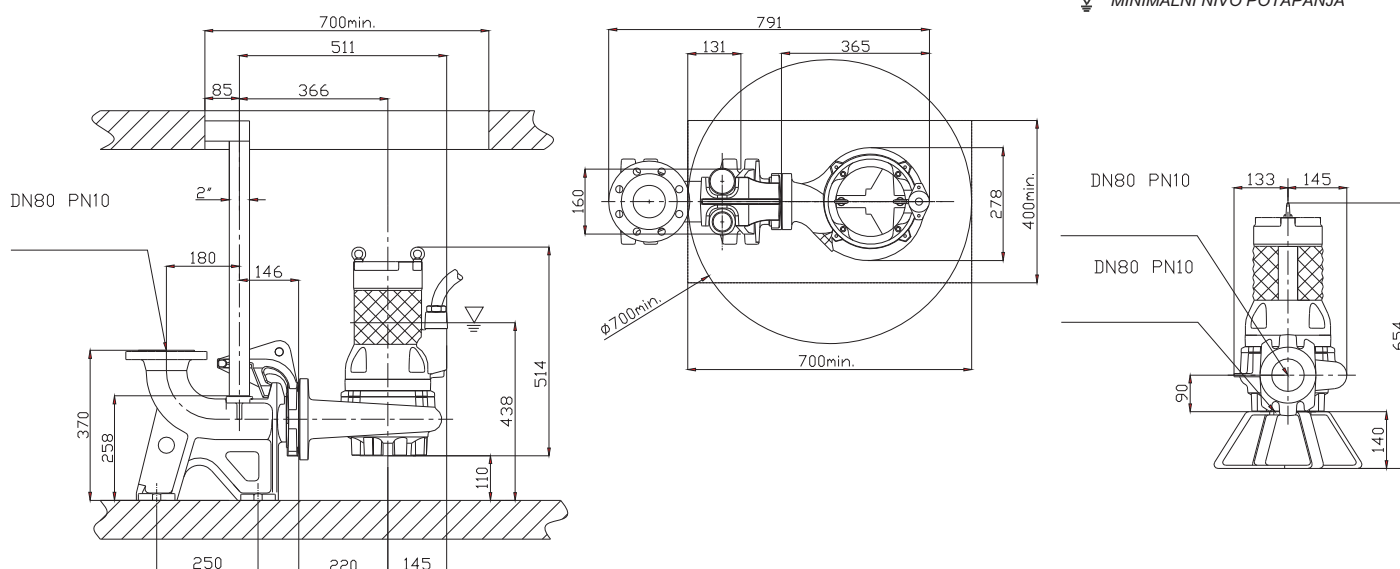
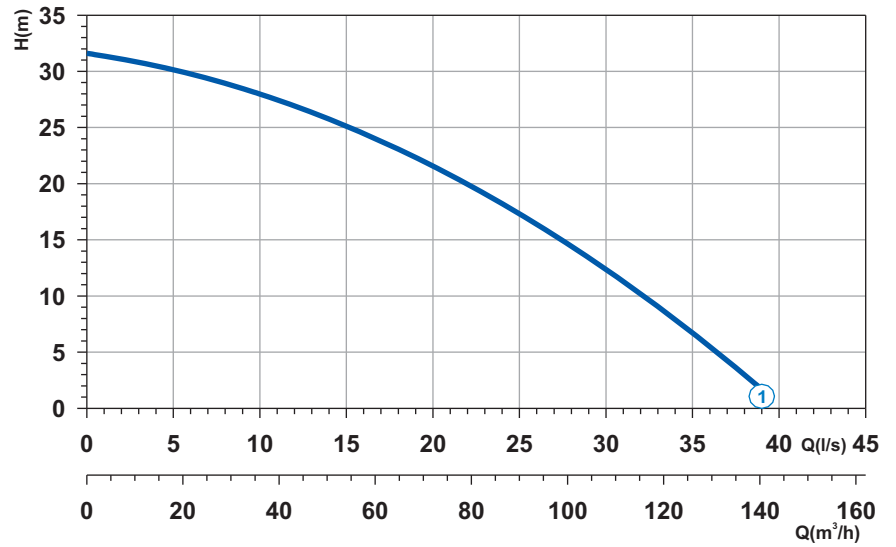


Krivulja N°	Code	Tip pumpe	MOTOR			ATEX code
			Nomin. snaga P2 (kW)	Nomin. struja I (A)	Startna struja Is (A)	
1	7000879	G210R3C1-M30AA2	5,7	12,5	73,7	7008395
2	7002637	G210R3C2-M30AA2	5,7	12,5	73,7	7008863

Napajanje	3ph 400/690V 50Hz
R.P.M.	2850
Slobodni prolaz (mm)	30
Izlaz (mm)	DN 80
Masa (Kg)	77

Dimenzije (mm)

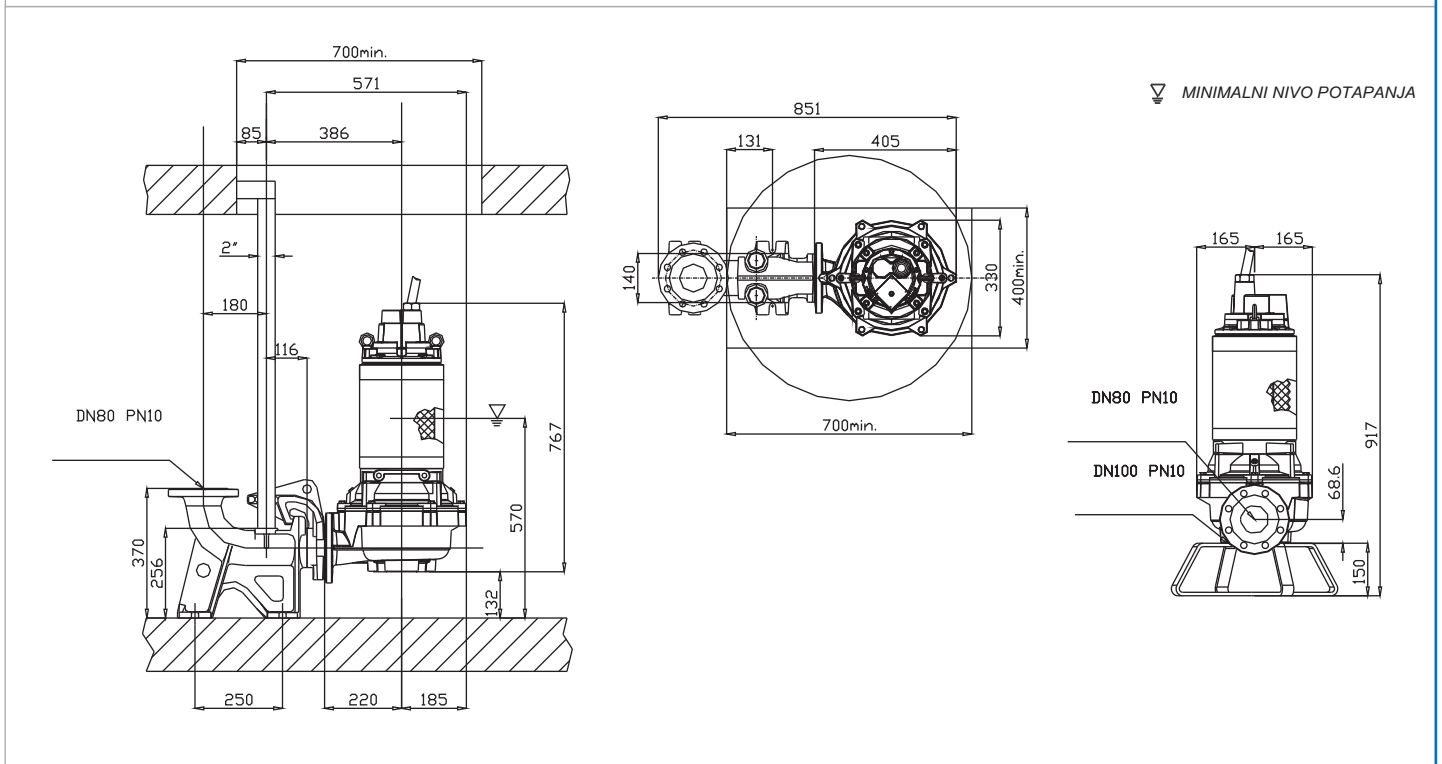


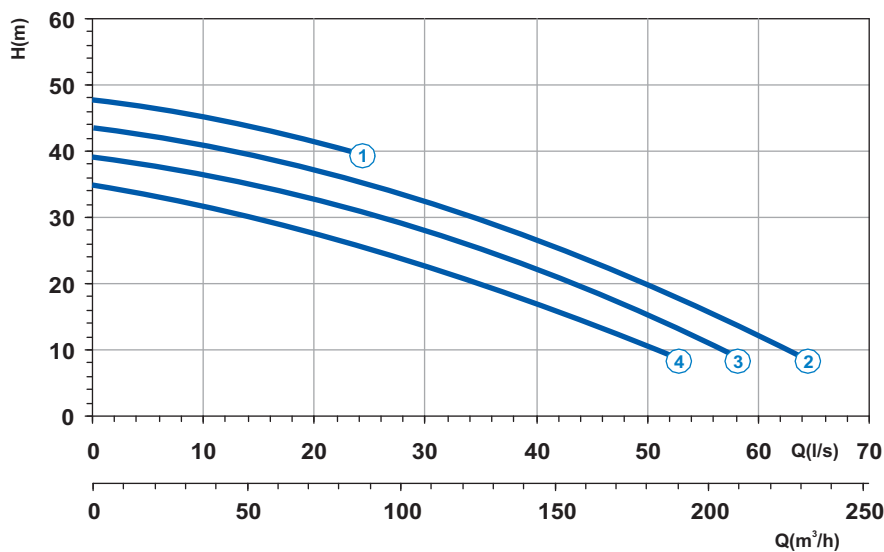


Napajanje	3ph 400/690V 50Hz
R.P.M.	2850
Slobodni prolaz (mm)	30
Izlaz (mm)	DN 80
Masa (Kg)	150

Krivulja N°	Code	Tip pompe	MOTOR			ATEX code	
			Nomin. snaga P2 (kW)	Nomin. struja I (A)	Startna struja Is (A)		
1	7009633	G211R3C1-M30AA2	8,2	15,5	91,5	-	

Dimenzije (mm)

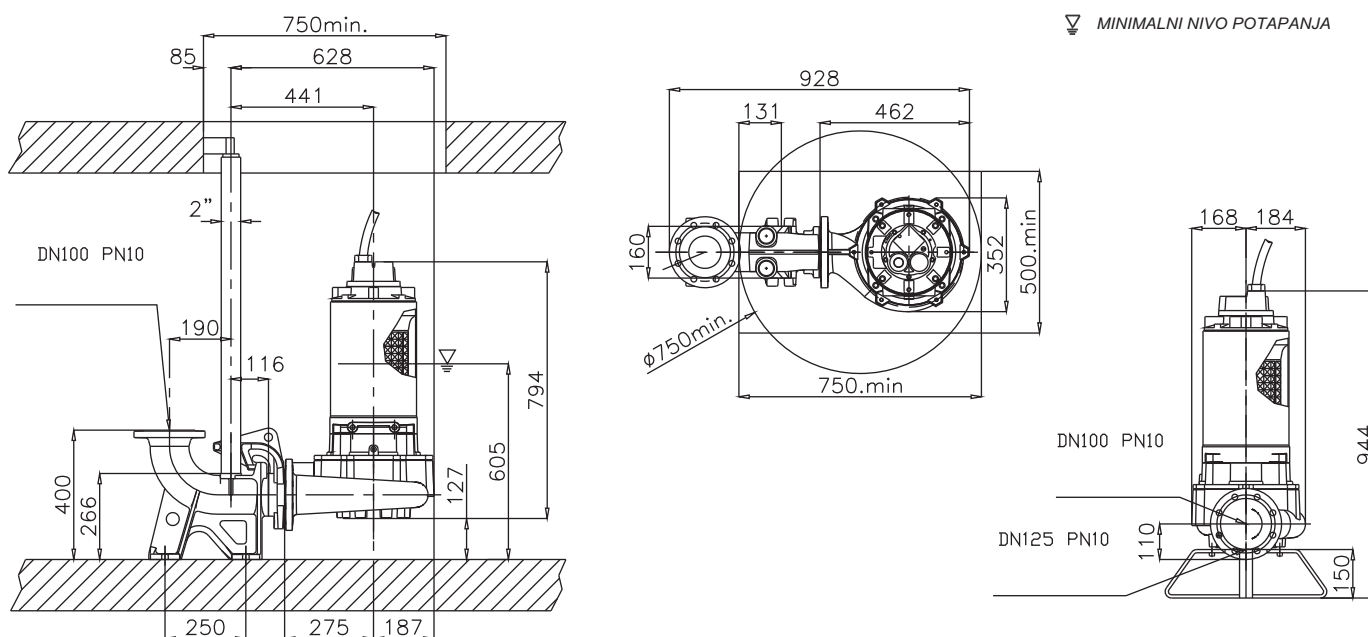


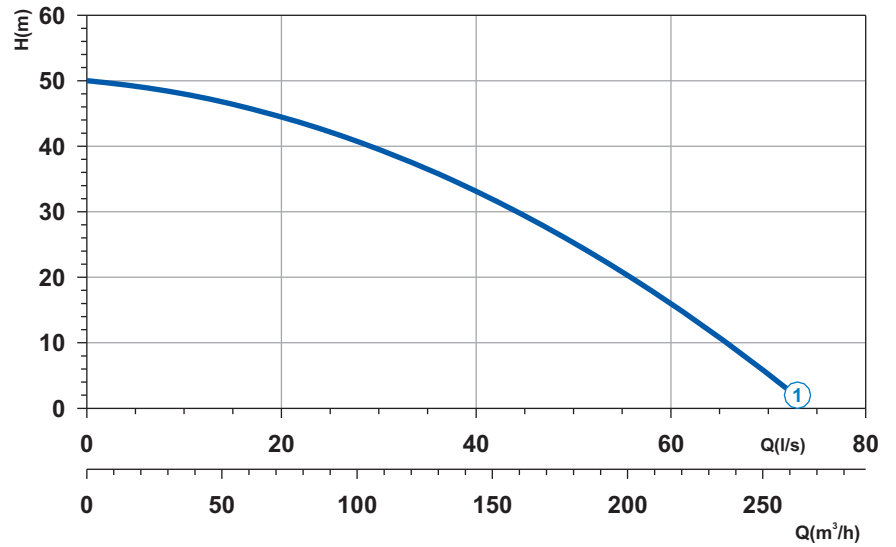


Krivulja N°	Code	Tip pumpe	MOTOR			ATEX code
			Nomin. snaga P2 (kW)	Nomin. struja I (A)	Startna struja Is (A)	
1	7008697	G213R3C1-P40AA2	18,2	34	193,8	7007452
2	7001119	G213R3C2-P40AA2	18,2	34	193,8	7007450
3	7003027	G213R3C3-P40AA2	13,8	29,5	174	7007451
4	7008701	G213R3C4-P40AA2	13,8	29,5	174	7007453

Napajanje	3ph 400/690V 50Hz
R.P.M.	2850
Slobodni prolaz (mm)	40
Izlaz (mm)	DN 100
Masa (Kg)	200

Dimenzije (mm)



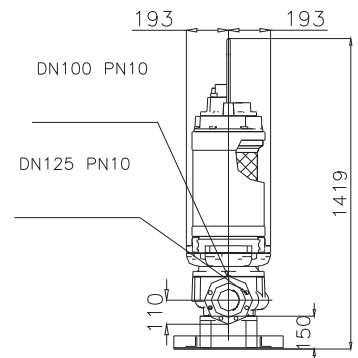
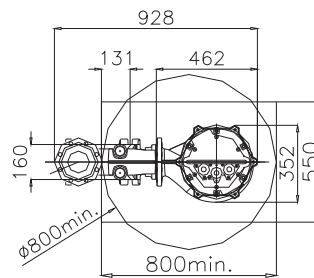
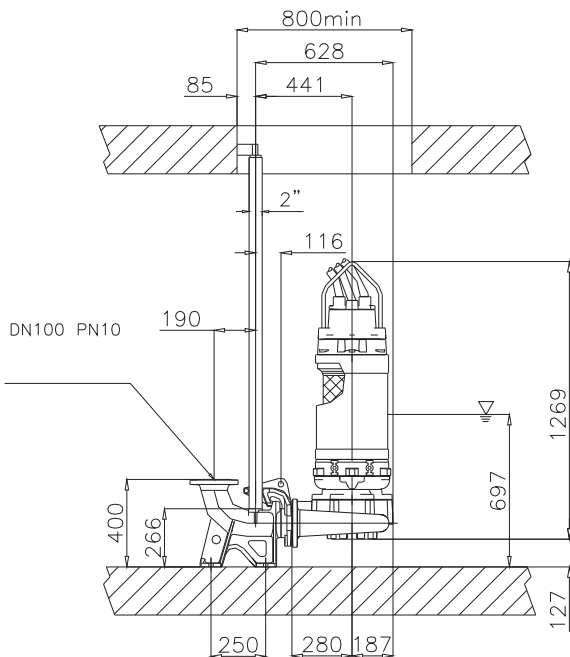


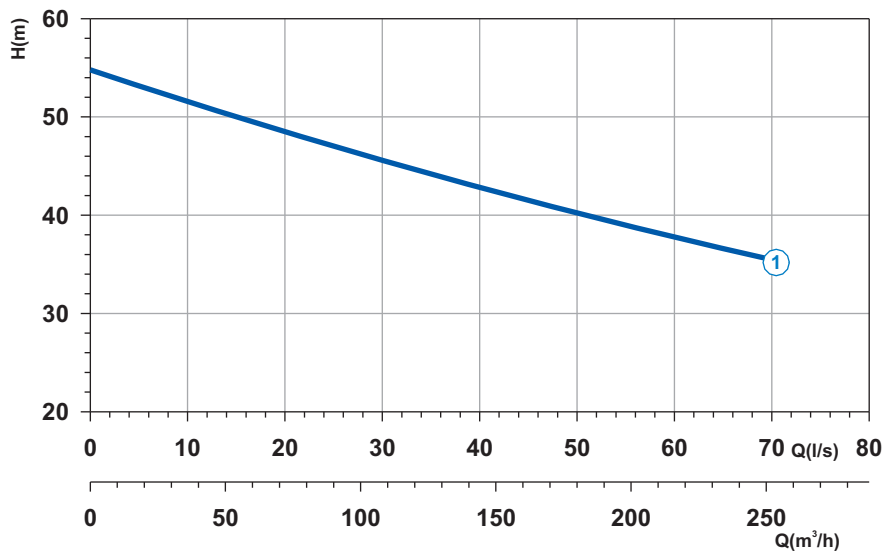
Napajanje	3ph 400/690V 50Hz
R.P.M.	2850
Slobodni prolaz (mm)	40
Izlaz (mm)	DN 100
Masa (Kg)	230

Krivulja N°	Code	Tip pumpe	MOTOR			ATEX code	
			Nomin. snaga P2 (kW)	Nomin. struja I (A)	Startna struja Is (A)		
1	7000329	G216R3C1-P40AA2	21,4	38,5	227	-	

Dimenzije (mm)

▽ MINIMALNI NIVO POTAPANJA

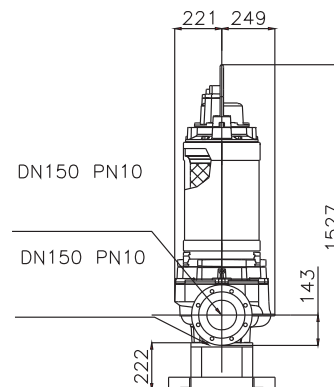
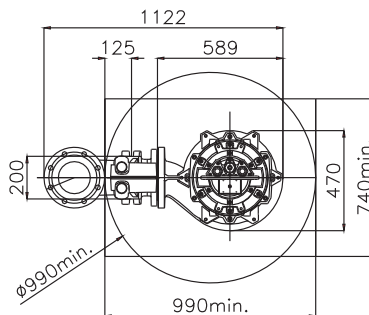
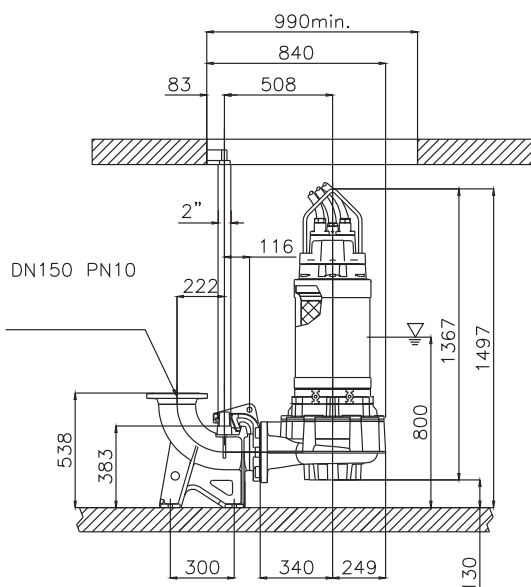




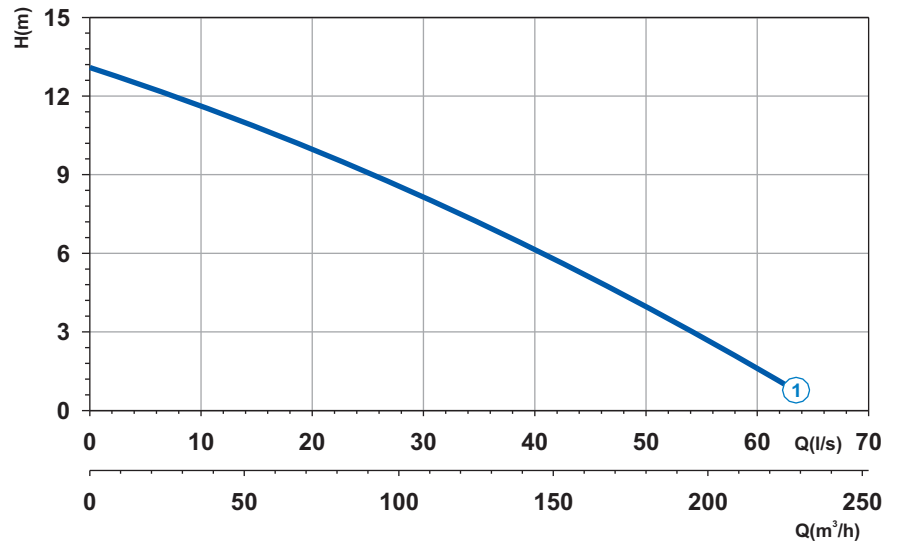
Krivulja N°	Code	Tip pumpe	MOTOR			ATEX code	
			Nomin. snaga P2 (kW)	Nomin. struja I (A)	Startna struja Is (A)		
1	7007343	G218R3C1-S50AA2	48,2	86,5	510,3	-	

Napajanje	3ph 400/690V 50Hz
R.P.M.	2850
Slobodni prolaz (mm)	50
Izlaz (mm)	DN 150
Masa (Kg)	420

Dimenzije (mm)



MINIMALNI NIVO POTAPANJA

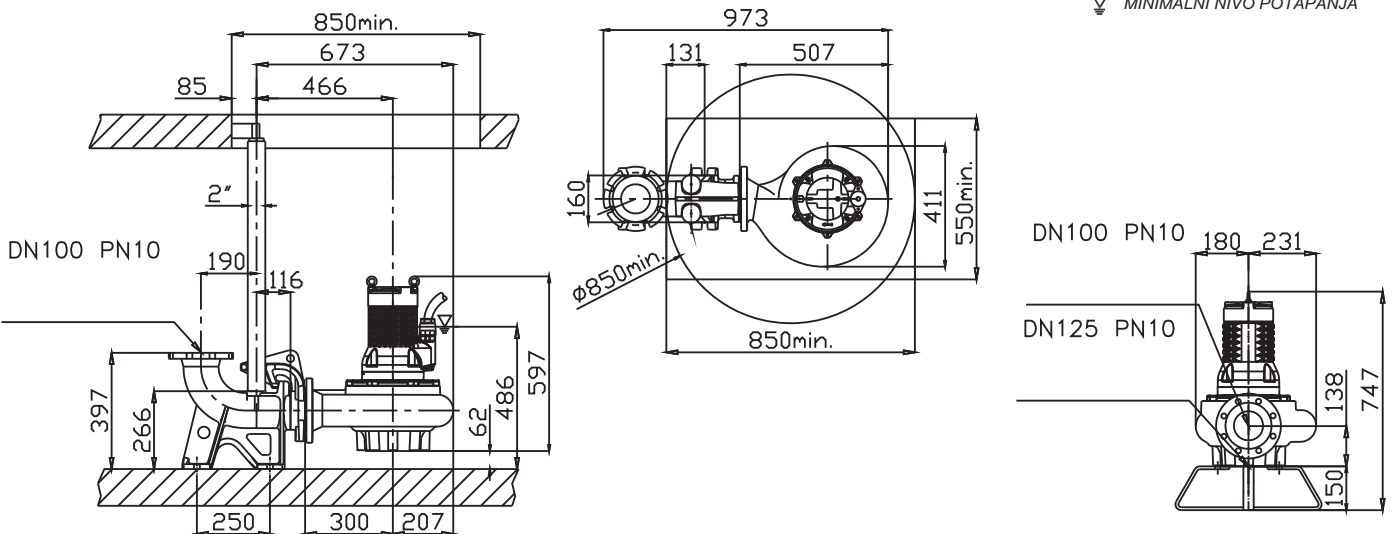


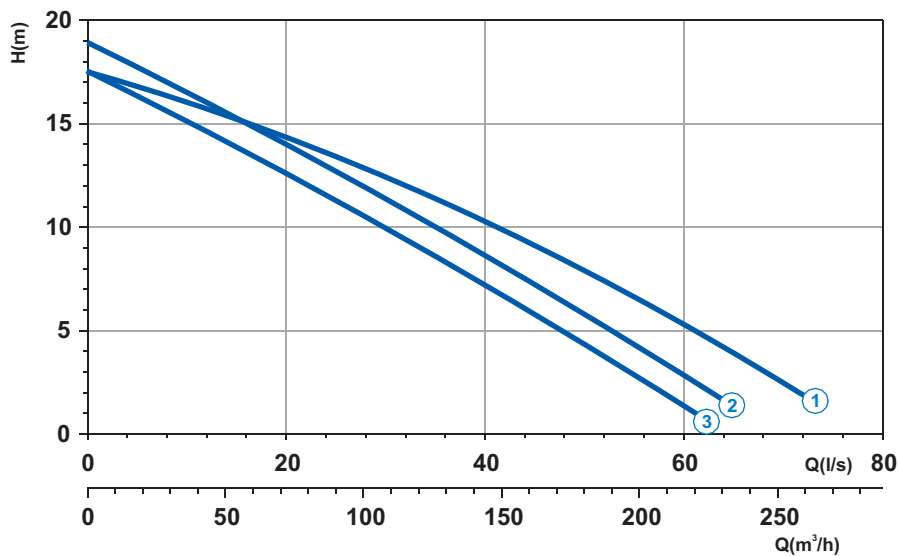
Napajanje	3ph 400/690V 50Hz
R.P.M.	1450
Slobodni prolaz (mm)	80
Izlaz (mm)	DN 100
Masa (Kg)	110

Krivulja N°	Code	Tip pumpe	MOTOR			ATEX code
			Nomin. snaga P2 (kW)	Nomin. struja I (A)	Startna struja Is (A)	
1	7000110	G410R2C2-P80AA2	4,6	9,5	42,7	7006074

Dimenzije (mm)

▽ MINIMALNI NIVO POTAPANJA

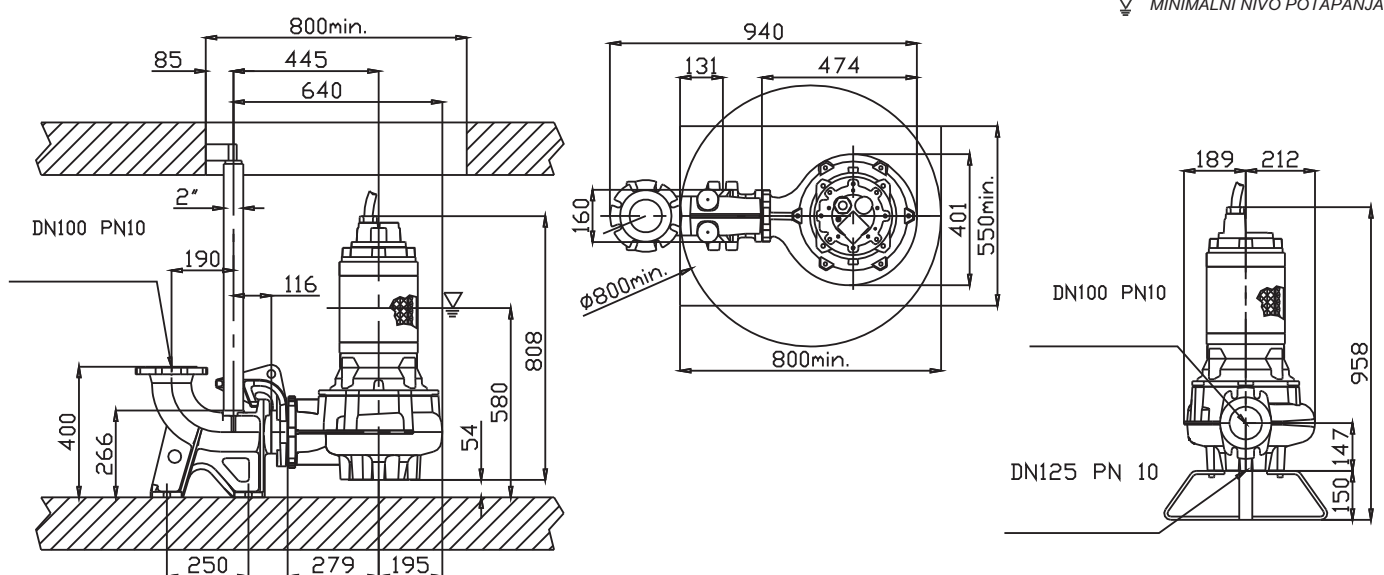


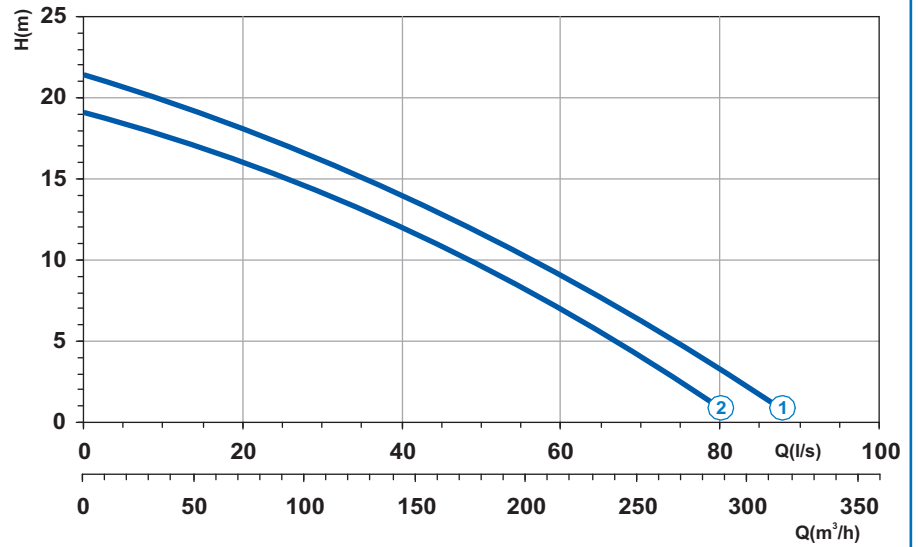


Krivulja N°	Code	Tip pumpe	MOTOR			ATEX code	
			Nomin. snaga P2 (kW)	Nomin. struja I (A)	Startna struja Is (A)		
1	7003976	G411R2C6-P80AA2	7,1	13,5	64,8	7007605	
2	7005447	G411R2C1-P60AA2	7,1	13,5	64,8	7007495	
3	7003737	G411R2C2-P60AA2	7,1	13,5	64,8	7007498	

Napajanje	3ph 400/690V 50Hz
R.P.M.	1450
Slobodni prolaz (mm)	80
Izlaz (mm)	DN 100
Masa (Kg)	160

Dimenzije (mm)



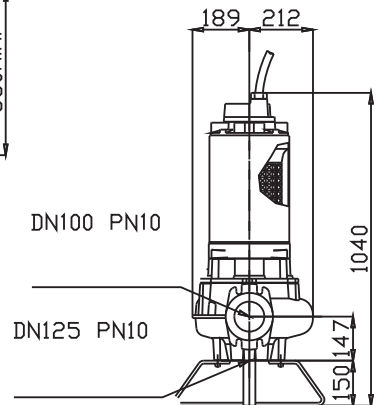
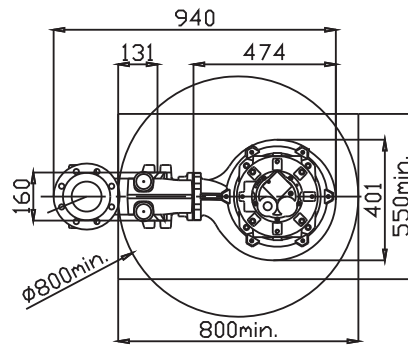
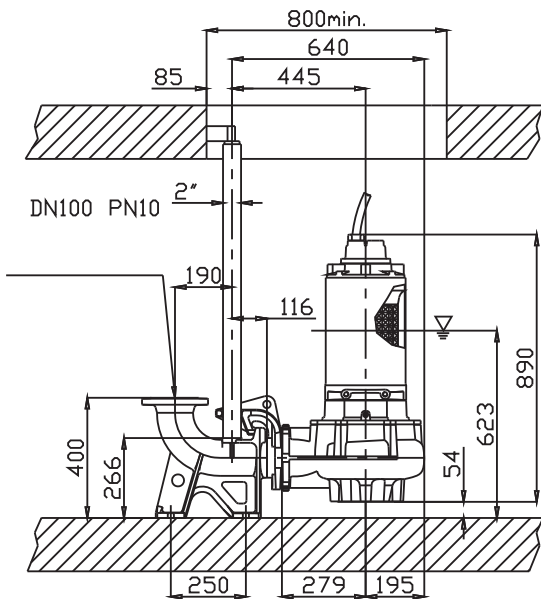


Napajanje	3ph 400/690V 50Hz
R.P.M.	1450
Slobodni prolaz (mm)	80
Izlaz (mm)	DN 100
Masa (Kg)	200

Krivulja N°	Code	Tip pumpe	MOTOR			ATEX code
			Nomin. snaga P2 (kW)	Nomin. struja I (A)	Startna struja Is (A)	
1	7001435	G413R2C1-P80AA2	12,1	27	148,5	7007491
2	7001791	G413R2C2-P80AA2	10,1	22	121	7007494

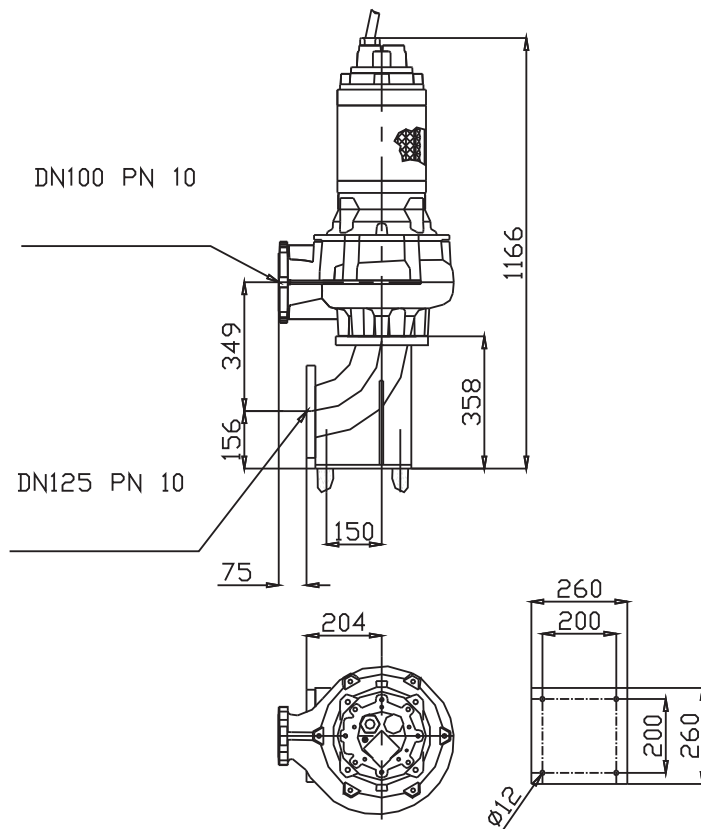
Dimenzije (mm)

▽ MINIMALNI NIVO POTAPANJA

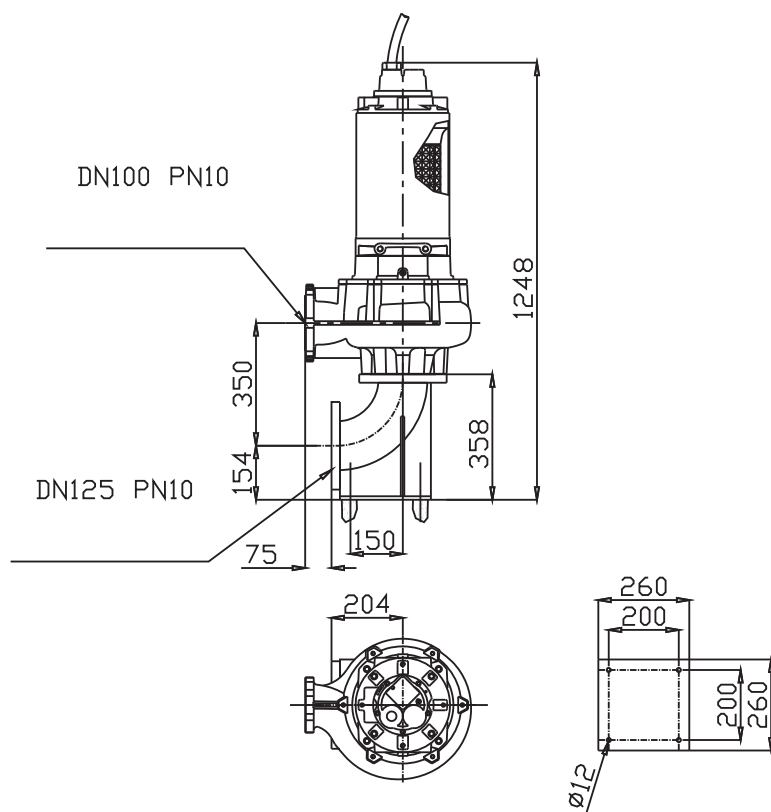


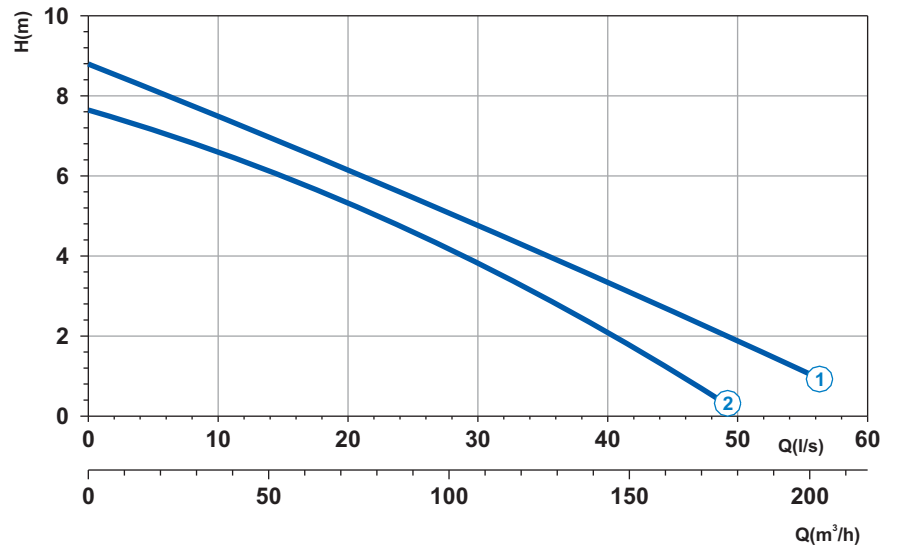
Suha instalacija

G411R2C1-P60AA2
G411R2C2-P60AA2
G411R2C6-P60AA2



G413R2C1-P80AA2
G413R2C2-P80AA2



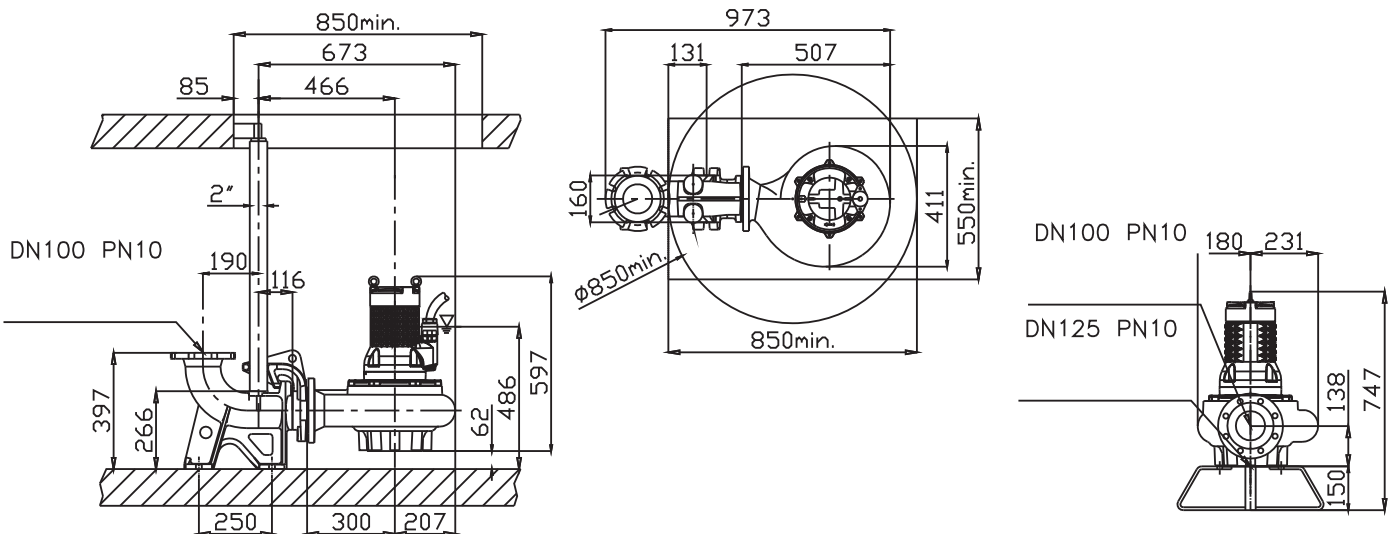


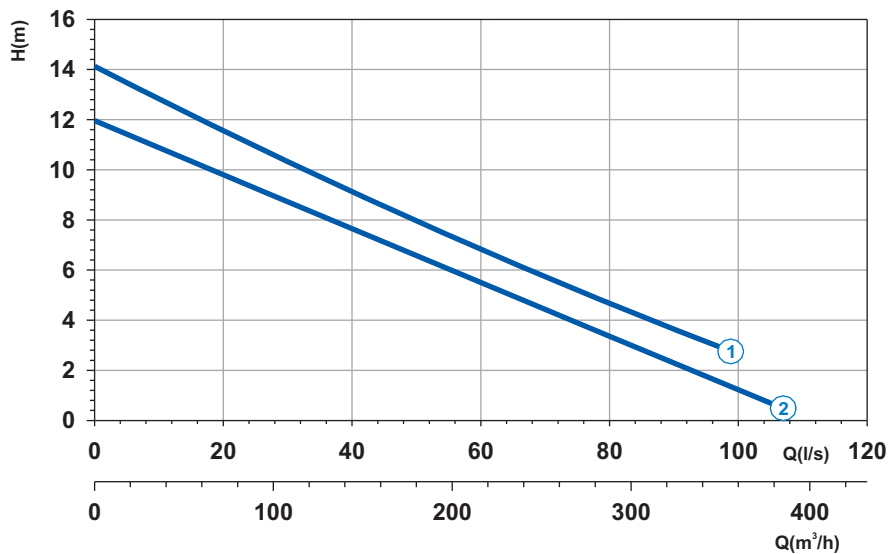
Napajanje	3ph 400/690V 50Hz
R.P.M.	950
Slobodni prolaz (mm)	80
Izlaz (mm)	DN 100
Masa (Kg)	111

Krivulja N°	Code	Tip pumpe	MOTOR			ATEX code
			Nomin. snaga P2 (kW)	Nomin. struja I (A)	Startna struja Is (A)	
1	7000113	G610R2C1-P80AA2	2,8	6,6	31	7006078
2	7006535	G609T2C1-P80AA0	2,3	6,0	24,6	7007628

Dimenzije (mm)

MINIMALNI NIVO POTAPANJA

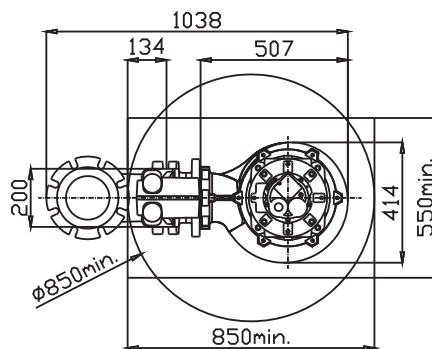
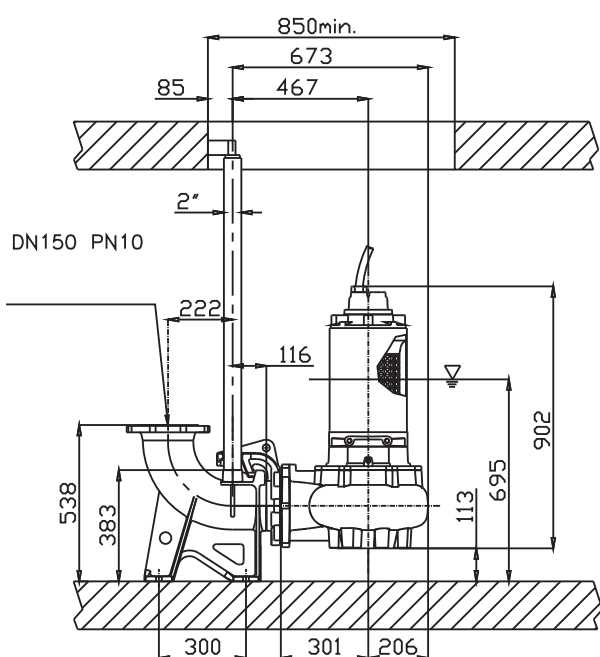




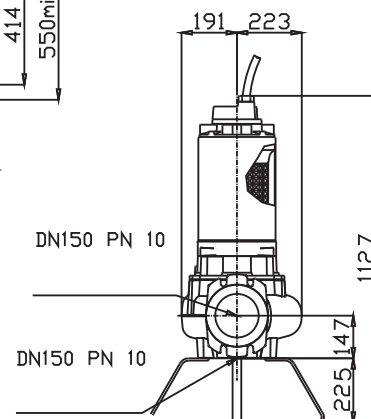
Krivulja N°	Code	Tip pumpe	MOTOR			ATEX code	
			Nomin. snaga P2 (kW)	Nomin. struja I (A)	Startna struja Is (A)		
1	7006383	G613R2C2-S80AA2	6,4	16	81,6	7007506	
2	7006882	G611R2C3-S80AA2	5,2	12,5	63,7	7007606	

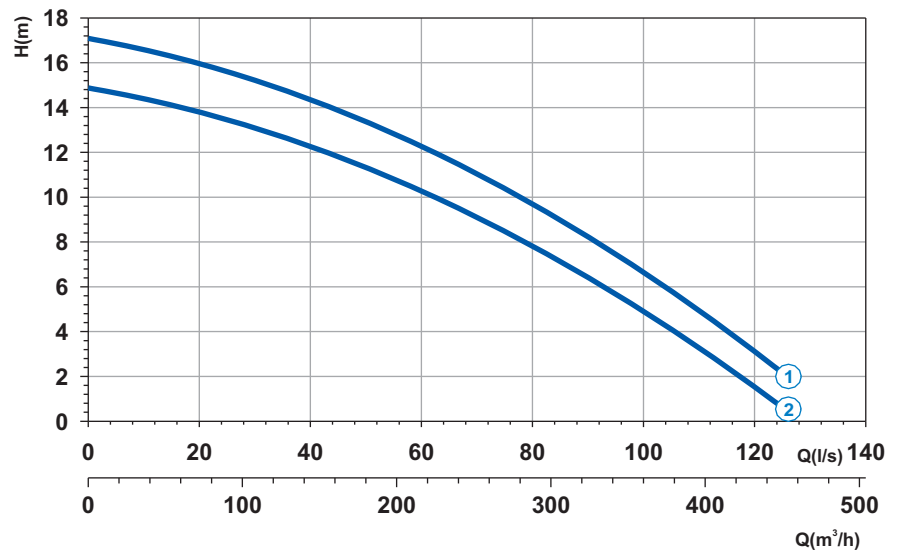
Napajanje	3ph 400/690V 50Hz
R.P.M.	950
Slobodni prolaz (mm)	80
Izlaz (mm)	DN 150
Masa (Kg)	280

Dimenzije (mm)



▽ MINIMALNI NIVO POTAPANJA

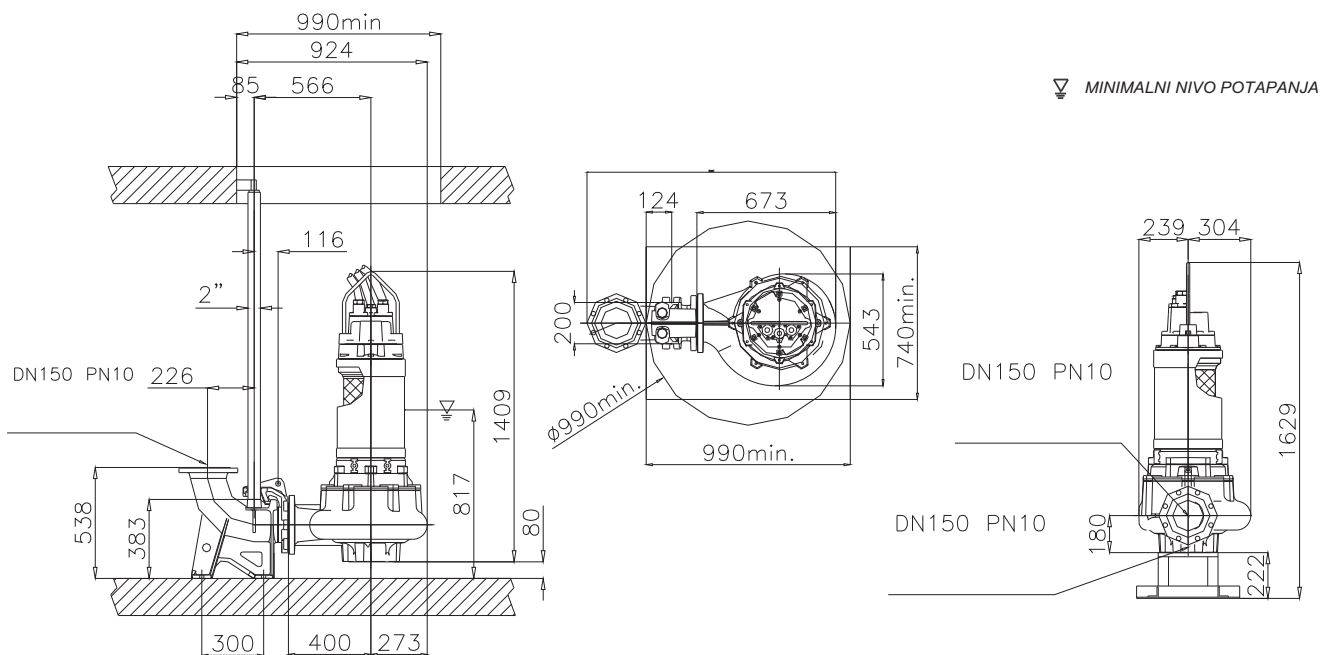


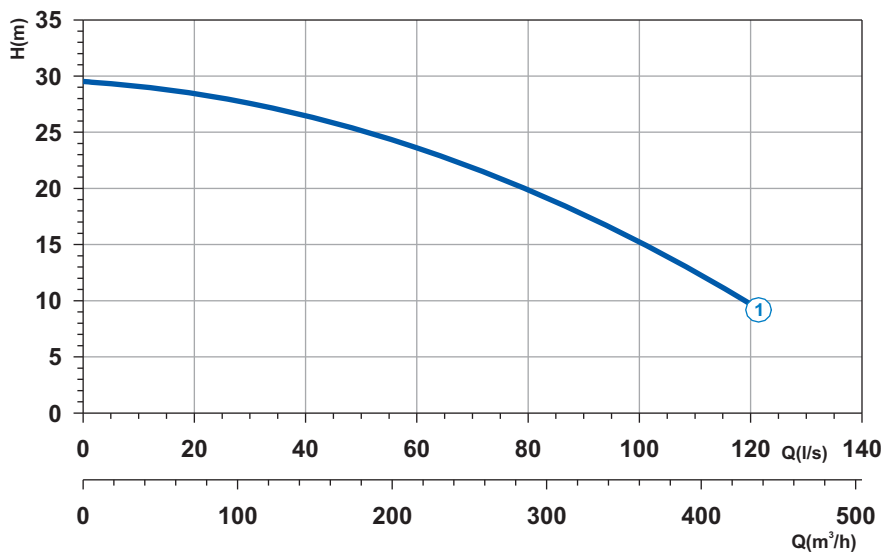


Napajanje	3ph 400/690V 50Hz
R.P.M.	950
Slobodni prolaz (mm)	100
Izlaz (mm)	DN 150
Masa (Kg)	320

Krivulja N°	Code	Tip pumpe	MOTOR			ATEX code	
			Nomin. snaga P2 (kW)	Nomin. struja I (A)	Startna struja Is (A)		
1	7009708	G616R2C1-S100AA2	15,9	31,5	186	-	
2	7009935	G616R2C2-S100AA2	15,9	31,5	186	-	

Dimenzije (mm)

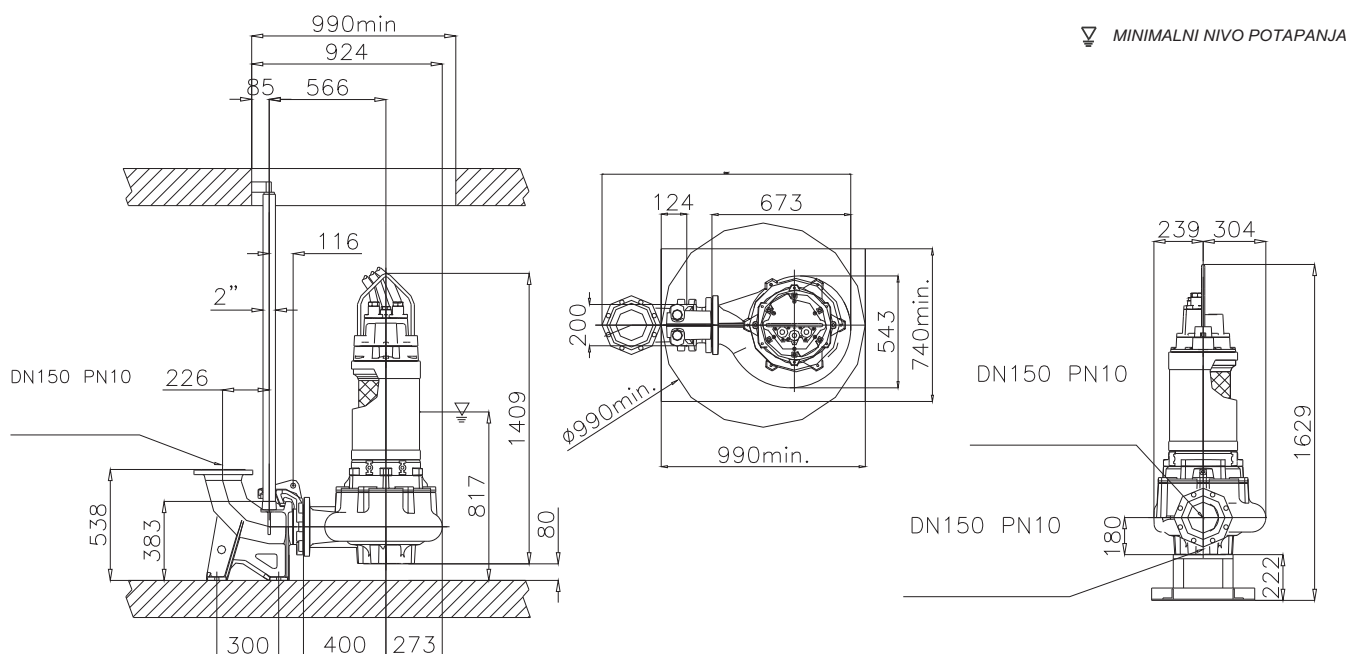


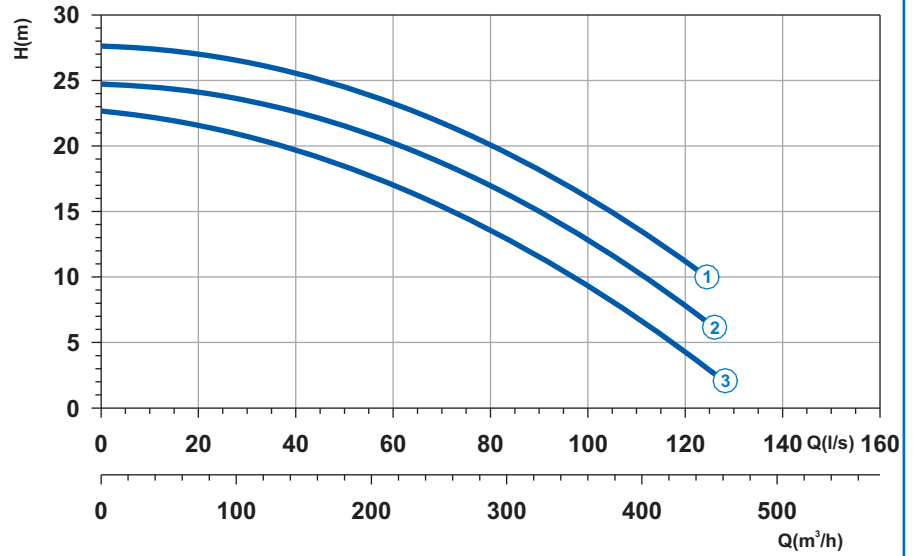


Krivulja N°	Code	Tip pompe	MOTOR			ATEX code	
			Nomin. snaga P2 (kW)	Nomin. struja I (A)	Startna struja Is (A)		
1	7007347	G416R2C1-S80AA2	26,1	51	301	-	

Napajanje	3ph 400/690V 50Hz
R.P.M.	1450
Slobodni prolaz (mm)	80
Izlaz (mm)	DN 150
Masa (Kg)	355

Dimenzije (mm)

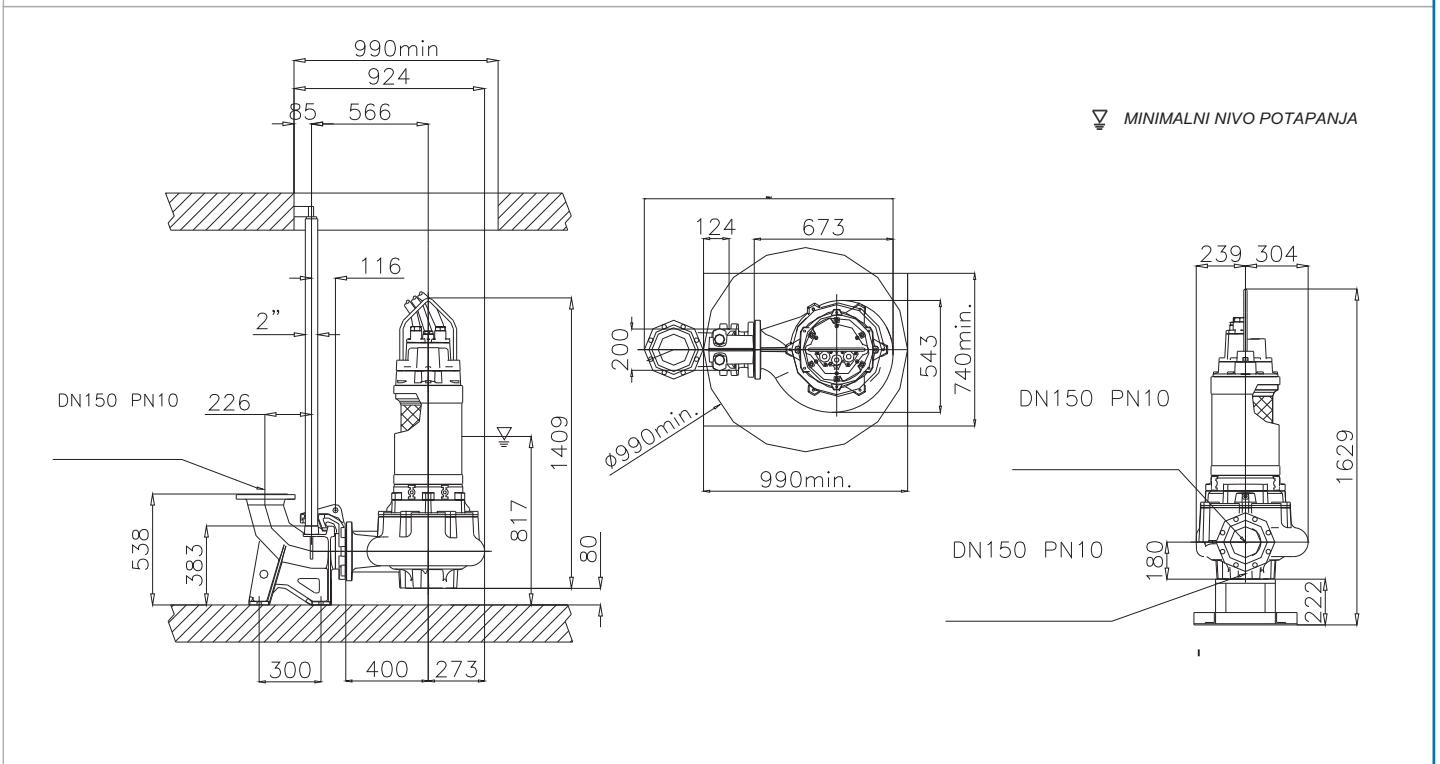


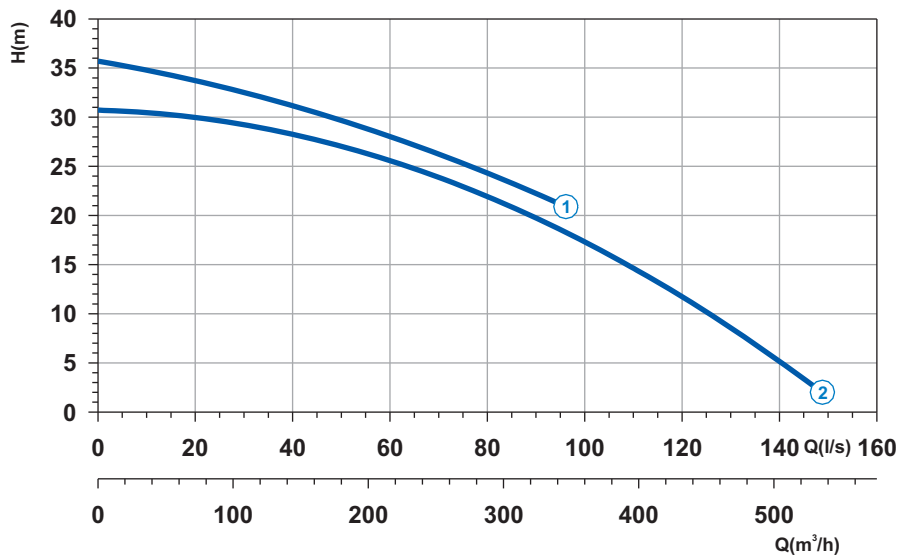


Napajanje	3ph 400/690V 50Hz
R.P.M.	1450
Slobodni prolaz (mm)	100
Izlaz (mm)	DN 150
Masa (Kg)	351

Krivulja N°	Code	Tip pumpe	MOTOR			ATEX code	
			Nomin. snaga P2 (kW)	Nomin. struja I (A)	Startna struja Is (A)		
1	7009928	G416R2C1-S100AA2	26,1	51	301	-	
2	7007367	G416R2C2-S100AA2	25,4	48,5	286	-	
3	7009779	G416R2C3-S100AA2	20,7	41,5	245	-	

Dimenzije (mm)

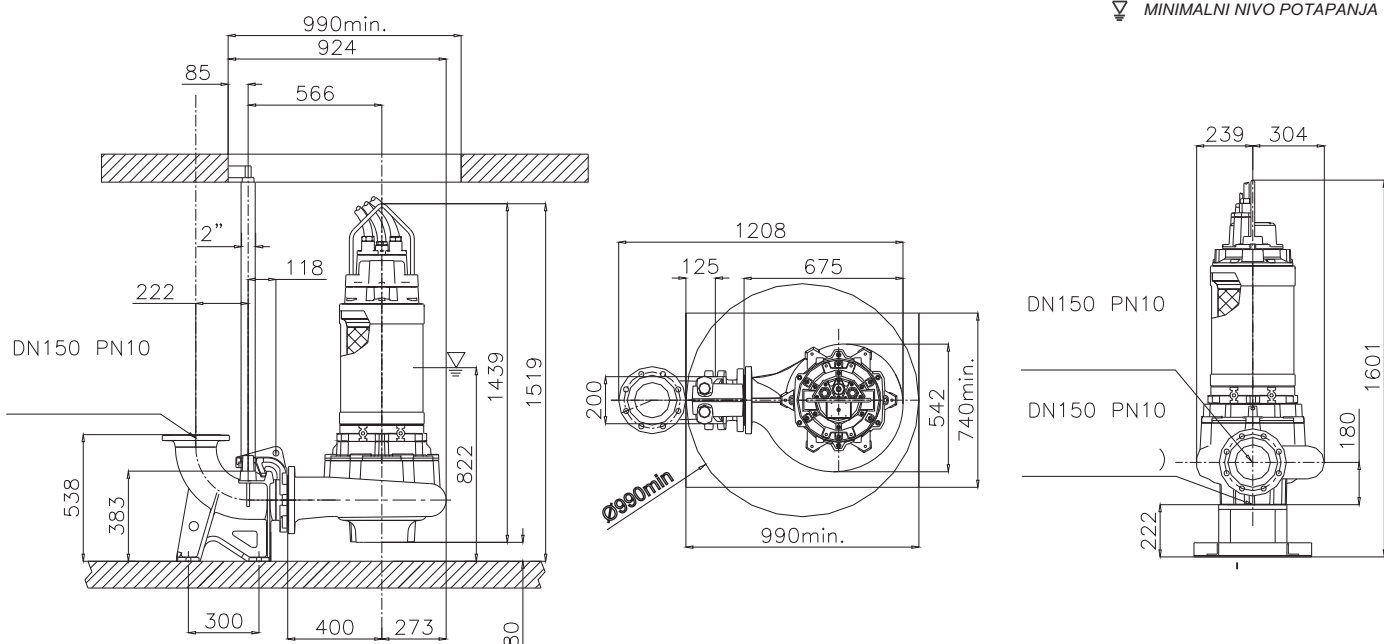


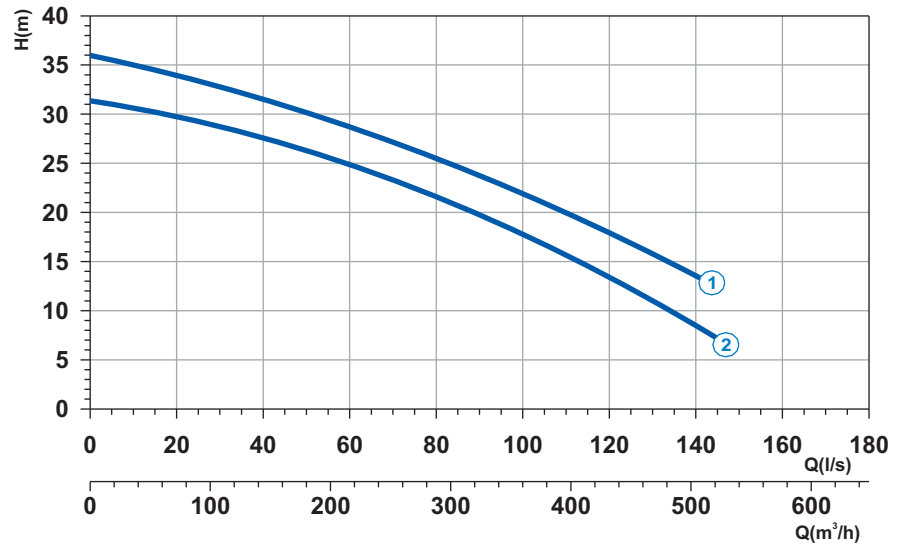


Krivulja N°	Code	Tip pumpe	MOTOR			ATEX code	
			Nomin. snaga P2 (kW)	Nomin. struja I (A)	Startna struja Is (A)		
1	7009877	G418R2C1-S80AA2	35,7	65,5	386	-	
2	7006663	G418R2C2-S80AA2	35,7	65,5	386	-	

Napajanje	3ph 400/690V 50Hz
R.P.M.	1450
Slobodni prolaz (mm)	80
Izlaz (mm)	DN 150
Masa (Kg)	355

Dimenzije (mm)

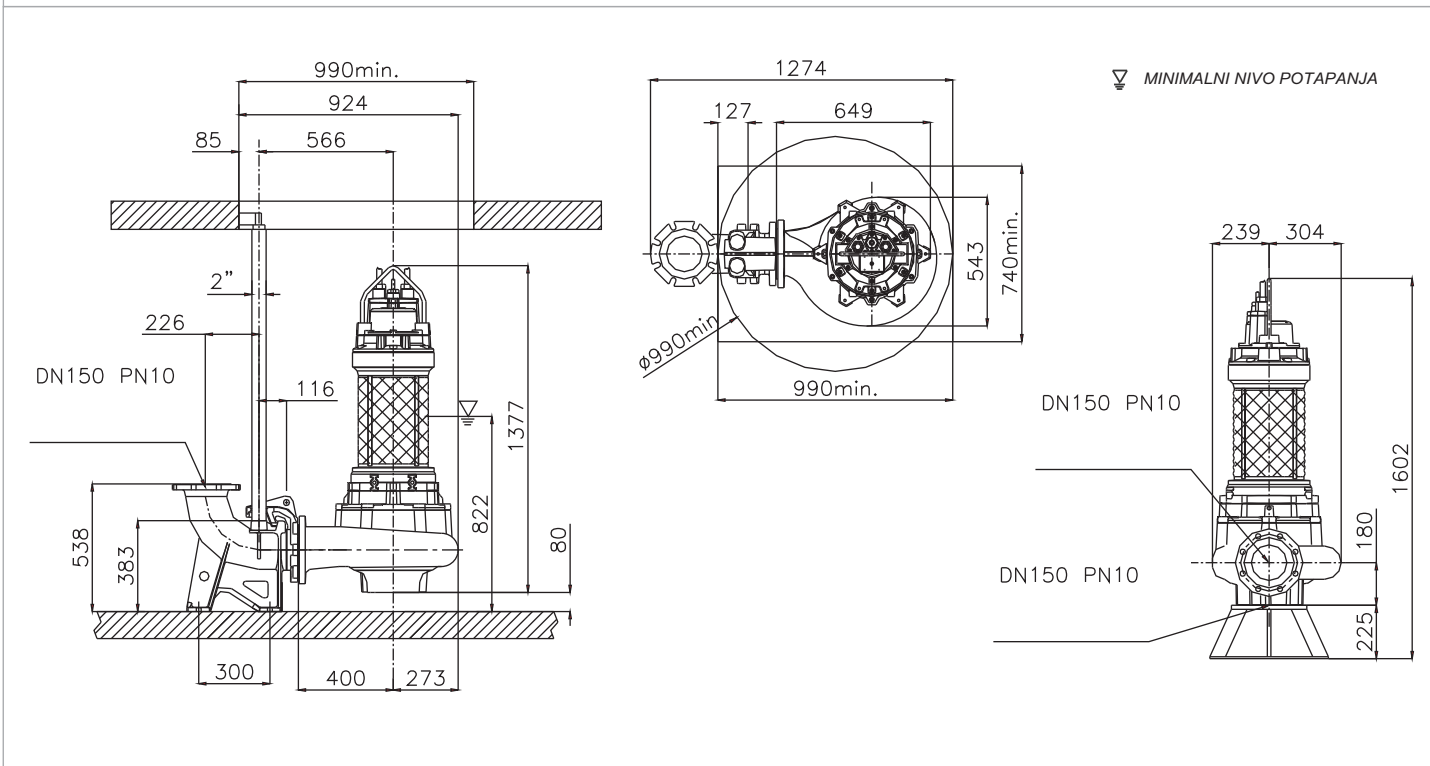




Napajanje	3ph 400/690V 50Hz
R.P.M.	1450
Slobodni prolaz (mm)	100
Izlaz (mm)	DN 150
Masa (Kg)	355

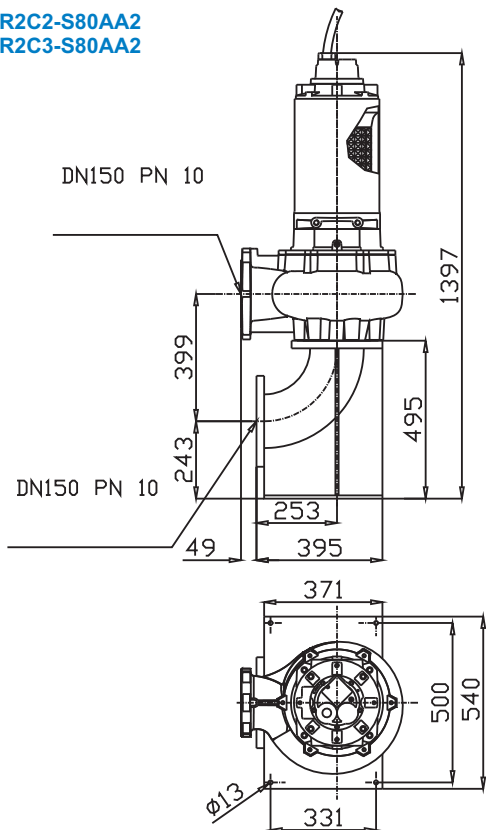
Krivulja N°	Code	Tip pumpe	MOTOR			ATEX code	
			Nomin. snaga P2 (kW)	Nomin. struja I (A)	Startna struja Is (A)		
1	7009883	G418R2C5-S100AA2	35,7	65,5	386	-	
2	7009847	G418R2C2-S100AA2	35,7	65,5	386	-	

Dimenzije (mm)

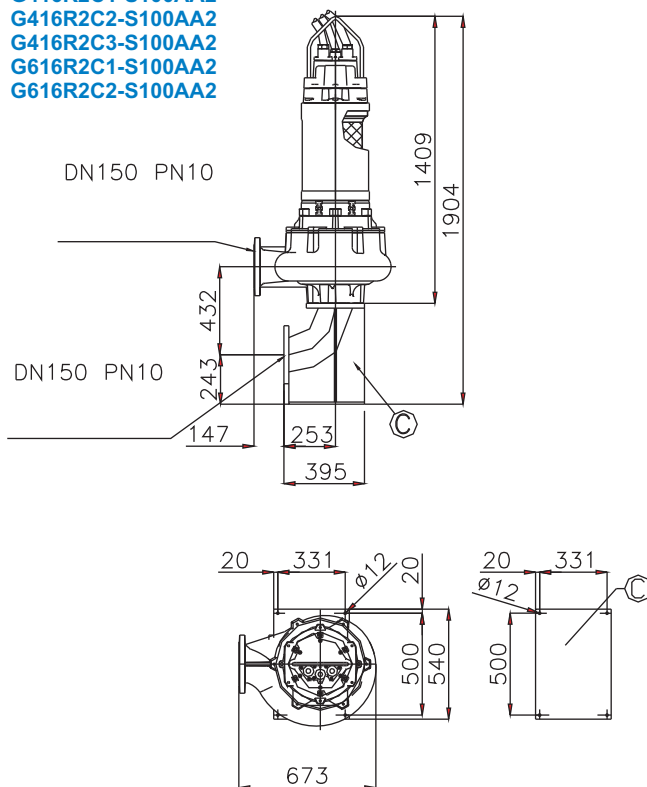


Suha instalacija

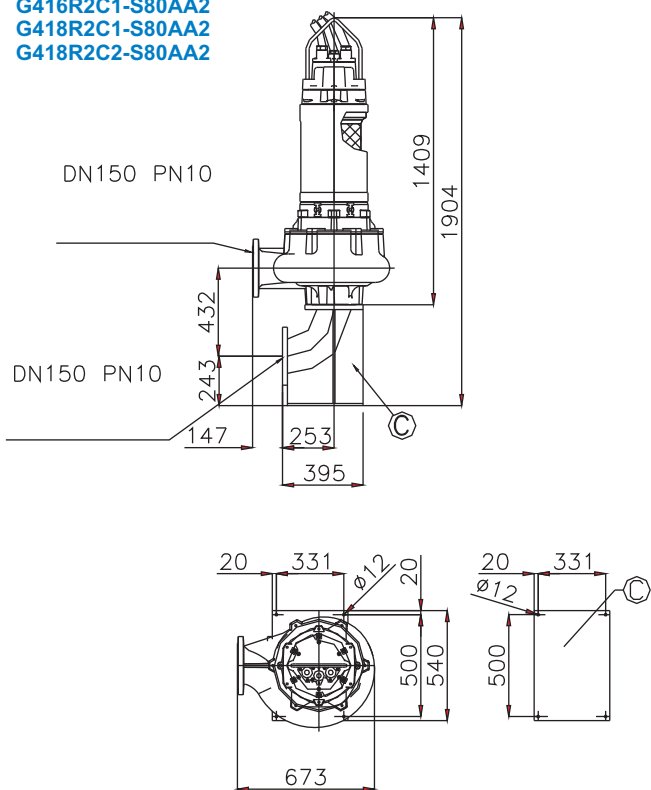
G613R2C2-S80AA2
G611R2C3-S80AA2



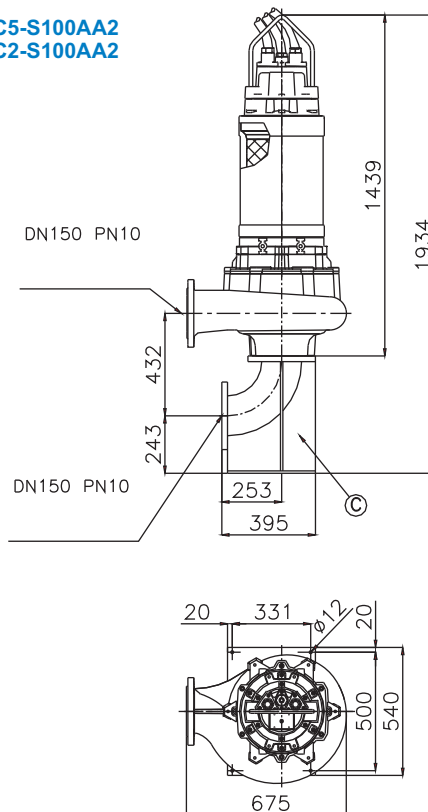
G416R2C1-S100AA2
G416R2C2-S100AA2
G416R2C3-S100AA2
G616R2C1-S100AA2
G616R2C2-S100AA2

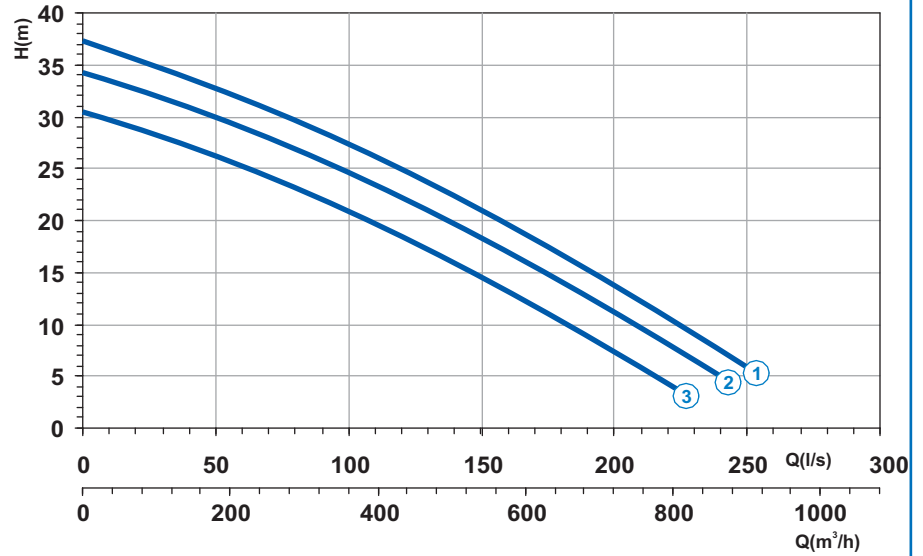


G416R2C1-S80AA2
G418R2C1-S80AA2
G418R2C2-S80AA2



G418R2C5-S100AA2
G418R2C2-S100AA2

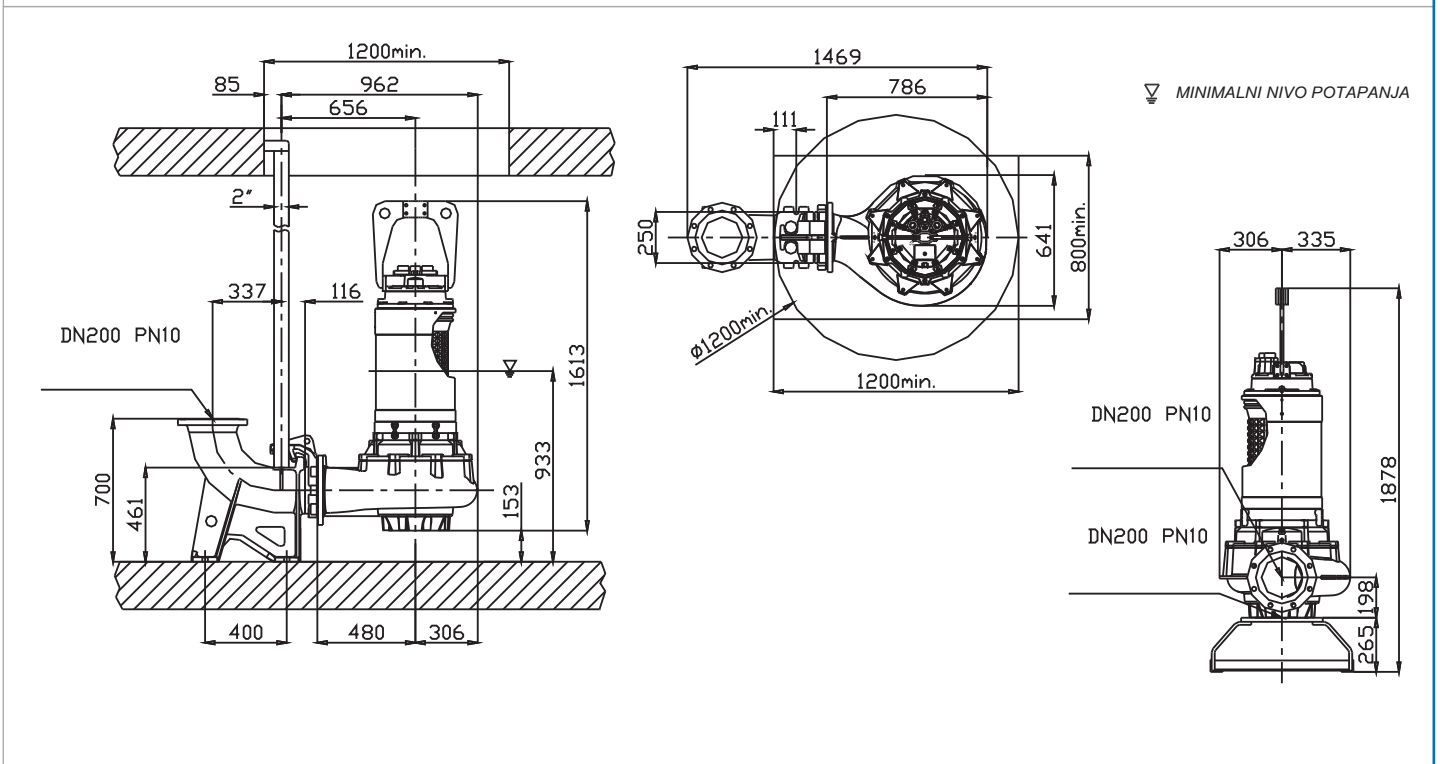


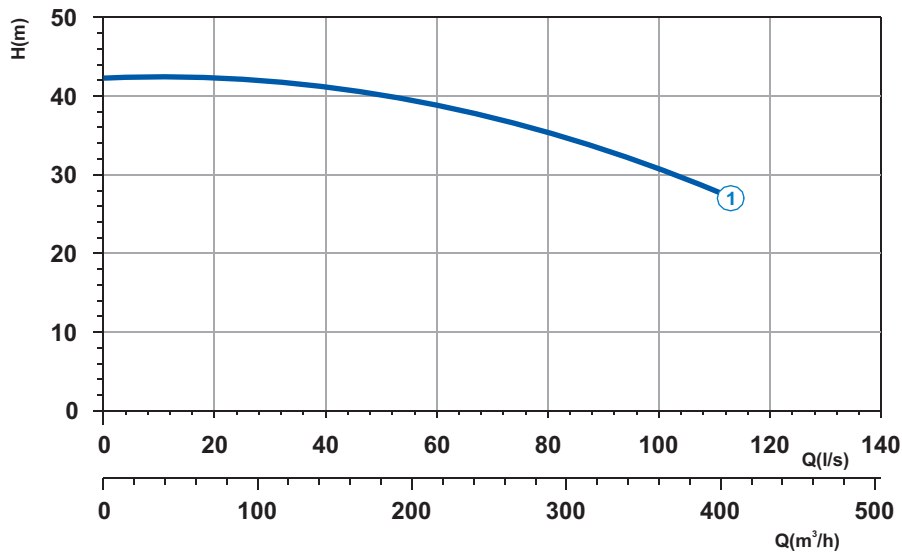


Napajanje	3ph 400/690V 50Hz
R.P.M.	1450
Slobodni prolaz (mm)	102
Izlaz (mm)	DN 200
Masa (Kg)	665

Krivulja N°	Code	Tip pumpe	MOTOR			ATEX code
			Nomin. snaga P2 (kW)	Nomin. struja I (A)	Startna struja Is (A)	
1	7000396	G420R2C1-T102AA2	52,1	92,5	545,7	-
2	7000463	G420R2C2-T102AA2	52,1	92,5	545,7	-
3	7000468	G420R2C3-T102AA2	46	83,5	492,6	-

Dimenzije (mm)

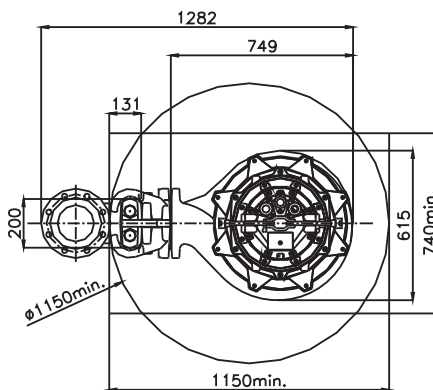
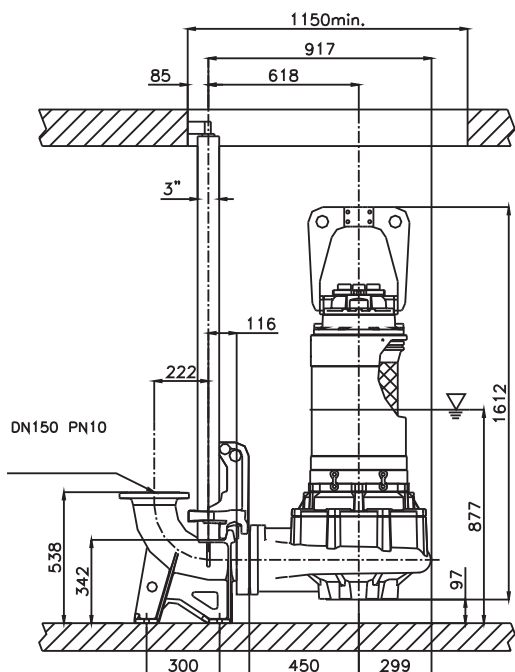




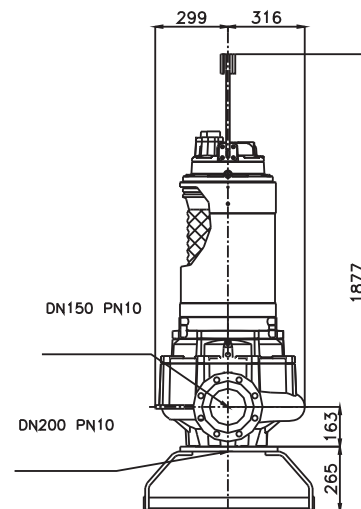
Krivulja N°	Code	Tip pumpe	MOTOR			ATEX code	
			Nomin. snaga P2 (kW)	Nomin. struja I (A)	Startna struja Is (A)		
1	7006179	G420R3C7-S60AA2	52,1	92,5	545,7	-	

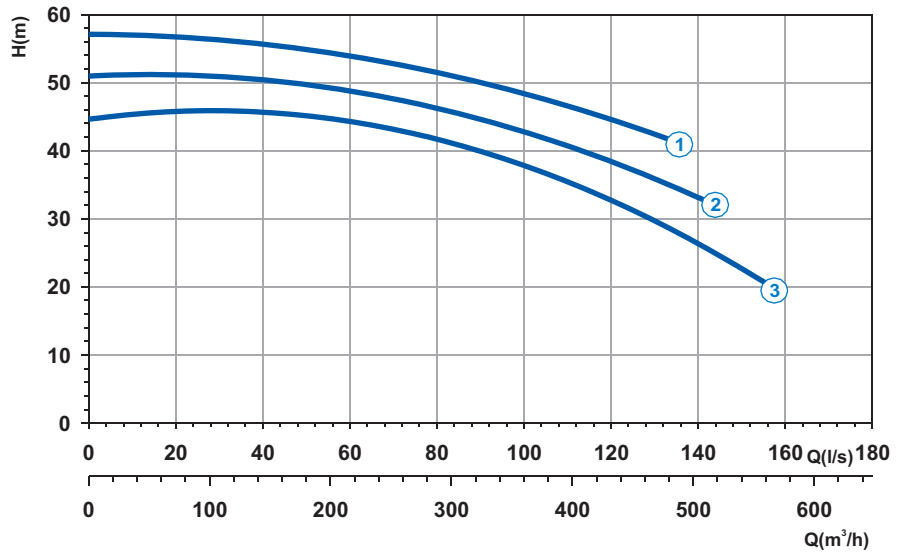
Napajanje	3ph 400/690V 50Hz
R.P.M.	1450
Slobodni prolaz (mm)	60
Izlaz (mm)	DN 150
Masa (Kg)	740

Dimenzije (mm)



MINIMALNI NIVO POTAPANJA

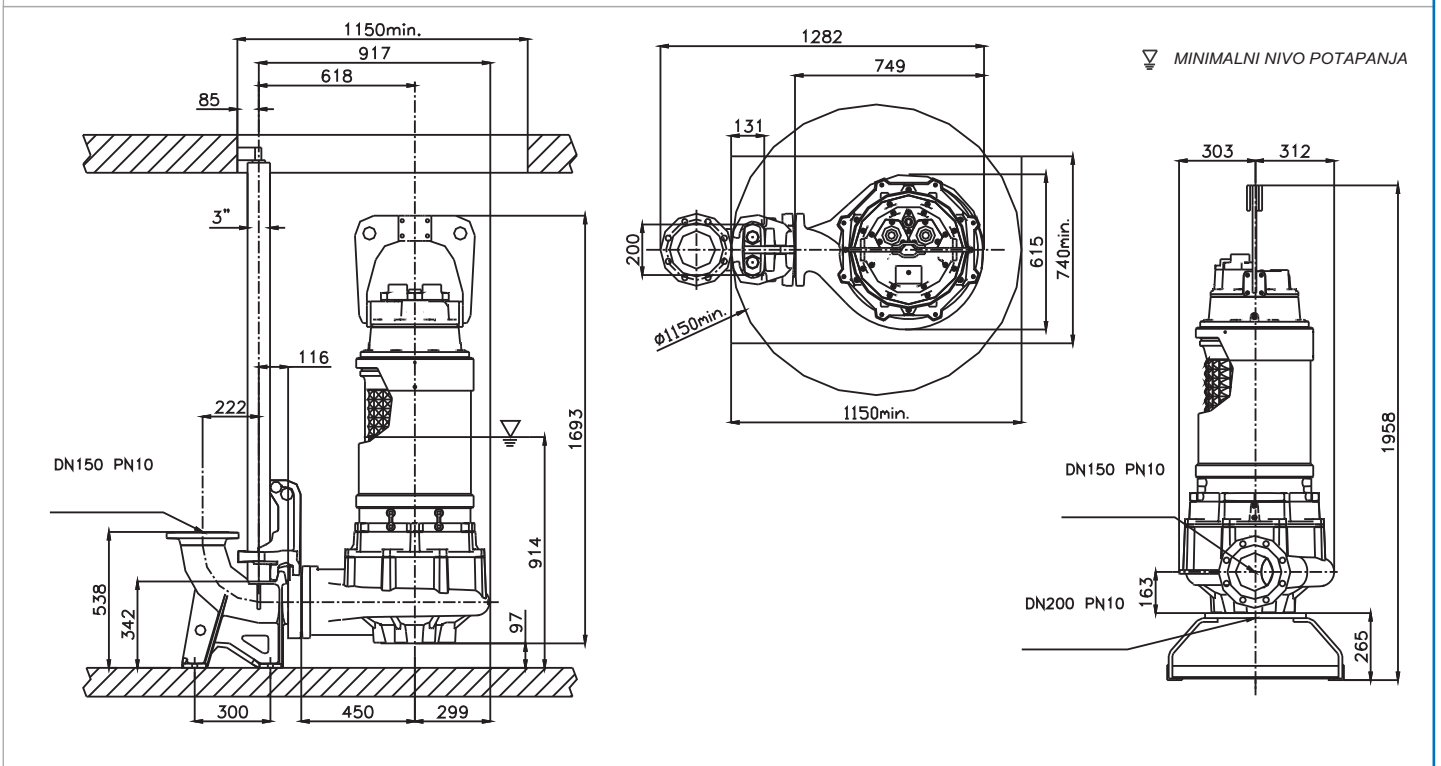


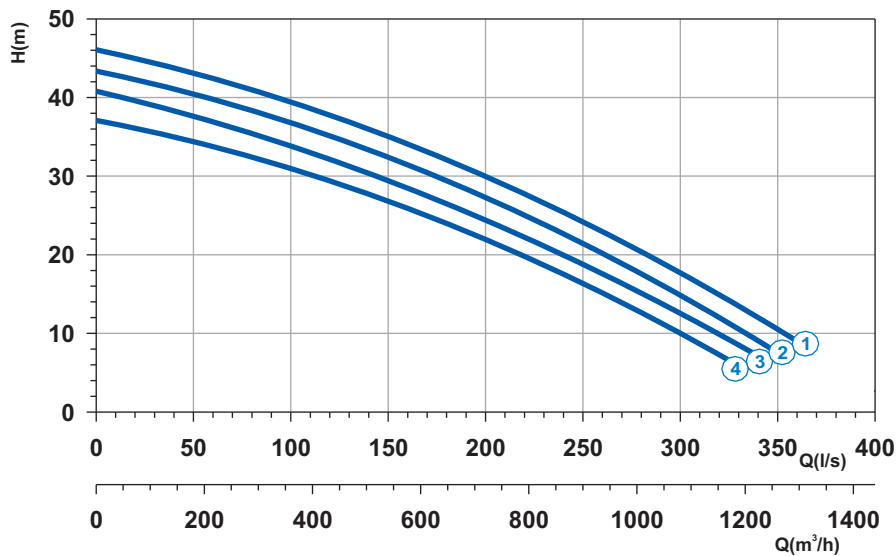


Napajanje	3ph 400/690V 50Hz
R.P.M.	1450
Slobodni prolaz (mm)	60
Izlaz (mm)	DN 150
Masa (Kg)	900

Krivulja N°	Code	Tip pumpe	MOTOR			ATEX code	
			Nomin. snaga P2 (kW)	Nomin. struja I (A)	Startna struja Is (A)		
1	7005290	G425R3C1-S60AA2	79,5	135	796,5	-	
2	7005409	G425R3C2-S60AA2	79,5	135	796,5	-	
3	7005598	G425R3C3-S60AA2	79,5	135	796,5	-	

Dimenzije (mm)

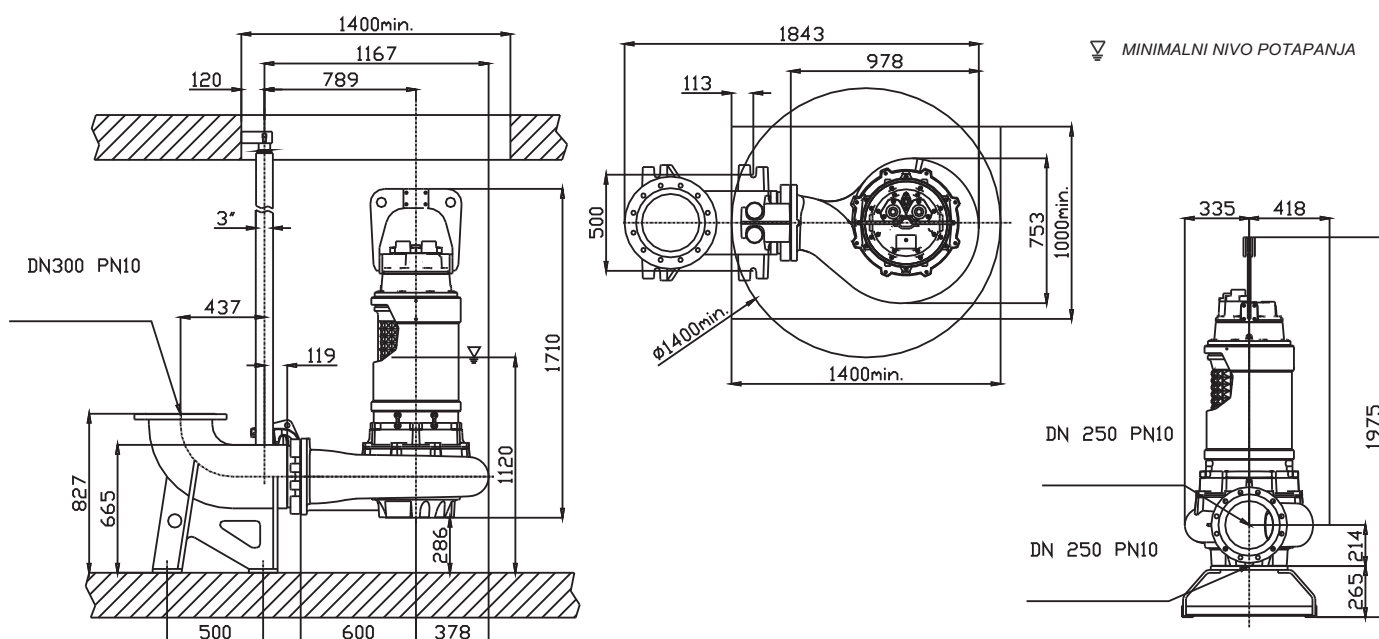


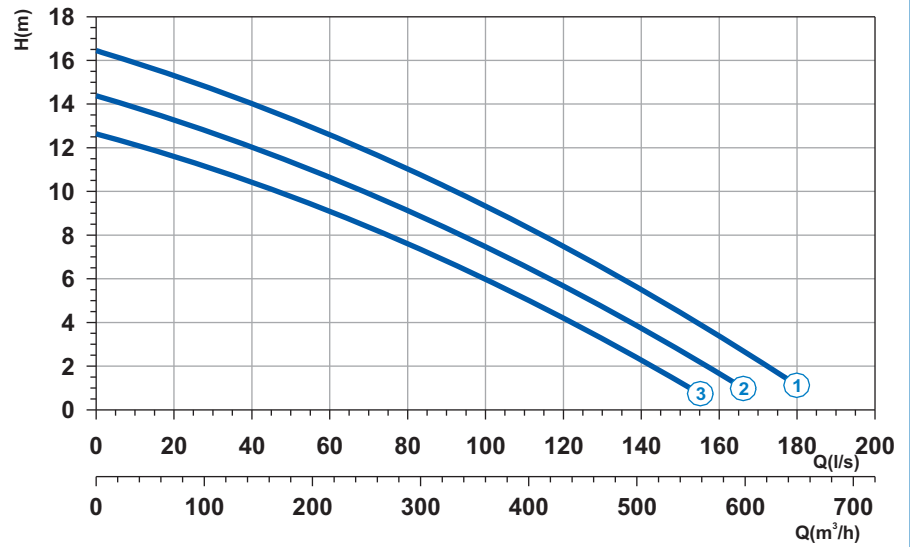


Krivulja N°	Code	Tip pumpe	MOTOR			ATEX code	
			Nomin. snaga P2 (kW)	Nomin. struja I (A)	Startna struja Is (A)		
1	7000228	G425R2C1-V105AA2	79,5	135	796,5	-	
2	7000230	G425R2C2-V105AA2	79,5	135	796,5	-	
3	7000323	G425R2C3-V105AA2	77,2	135	796,5	-	
4	7000325	G425R2C4-V105AA2	77,2	135	796,5	-	

Napajanje	3ph 400/690V 50Hz
R.P.M.	1450
Slobodni prolaz (mm)	105
Izlaz (mm)	DN 250
Masa (Kg)	914

Dimenzije (mm)

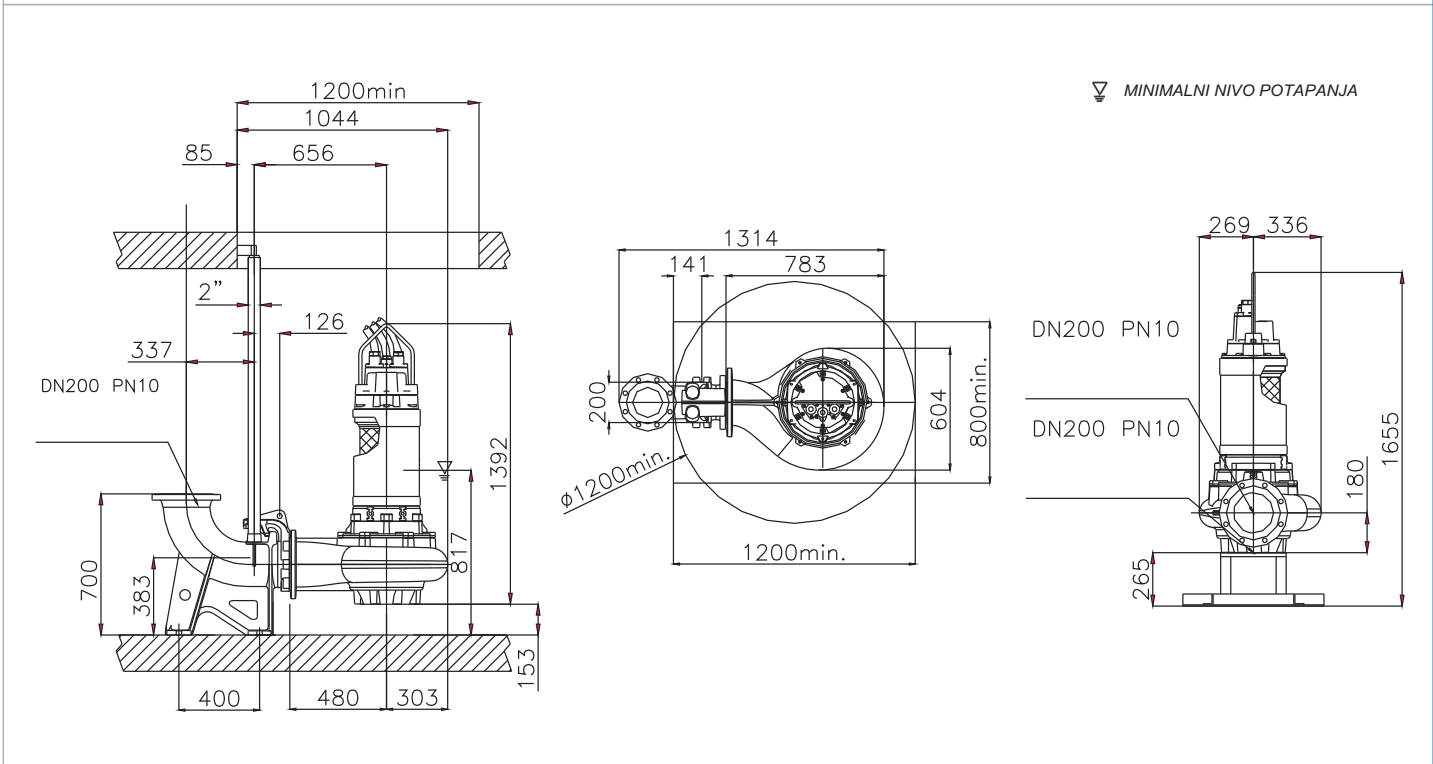


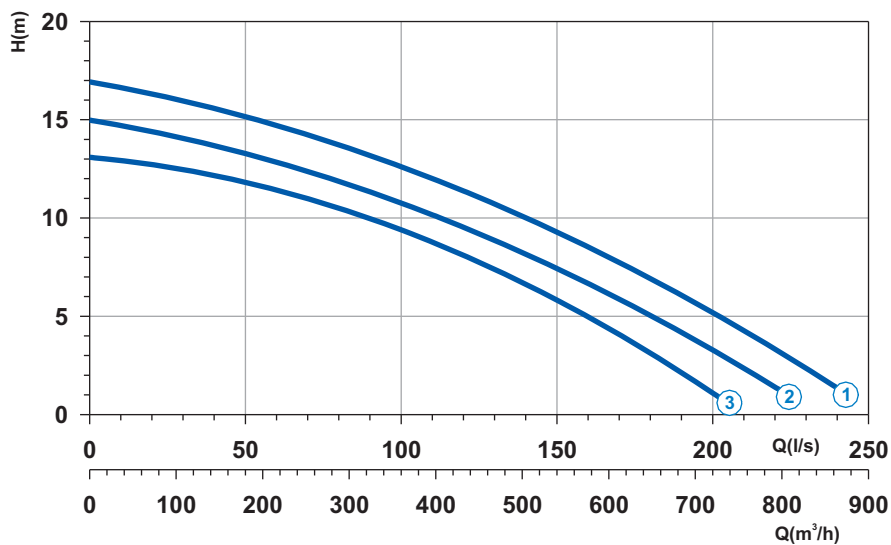


Napajanje	3ph 400/690V 50Hz
R.P.M.	950
Slobodni prolaz (mm)	102
Izlaz (mm)	DN 200
Masa (Kg)	471

Krivulja N°	Code	Tip pumpe	MOTOR			ATEX code	
			Nomin. snaga P2 (kW)	Nomin. struja I (A)	Startna struja Is (A)		
1	7009950	G616R2C1-T102AA2	19,8	39	230	-	
2	7009945	G616R2C2-T102AA2	15,9	31,5	186	-	
3	7009941	G616R2C3-T102AA2	15,9	31,5	186	-	

Dimenzije (mm)

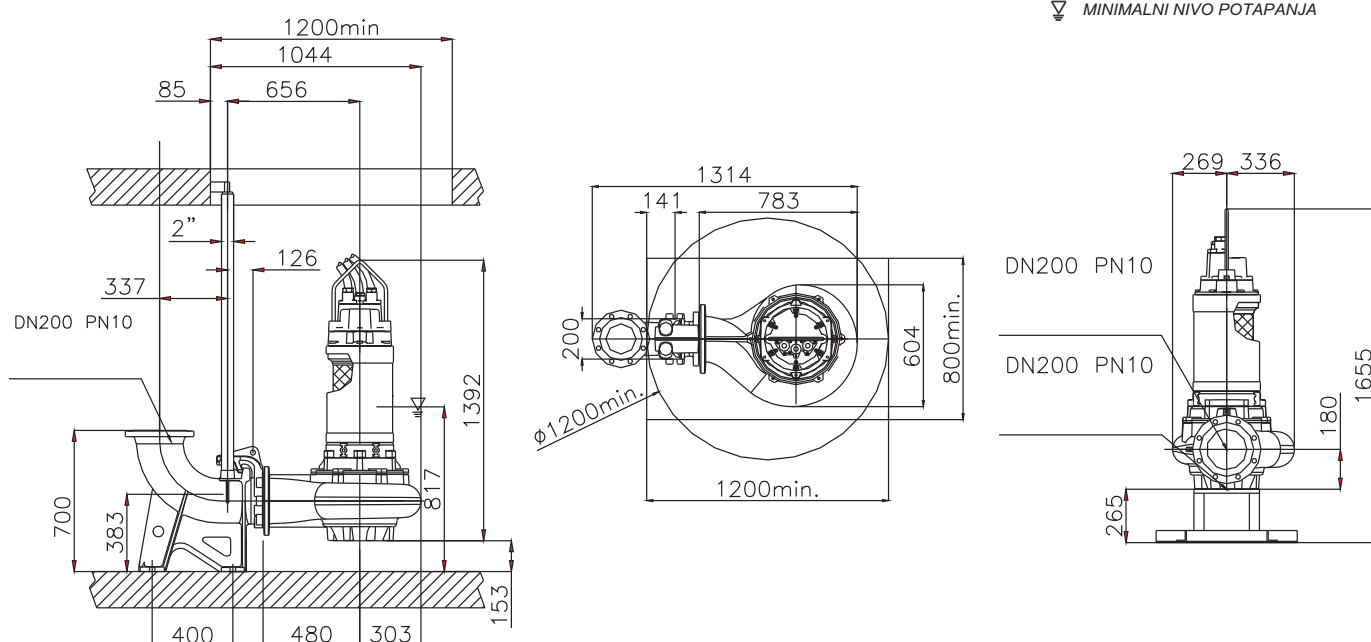


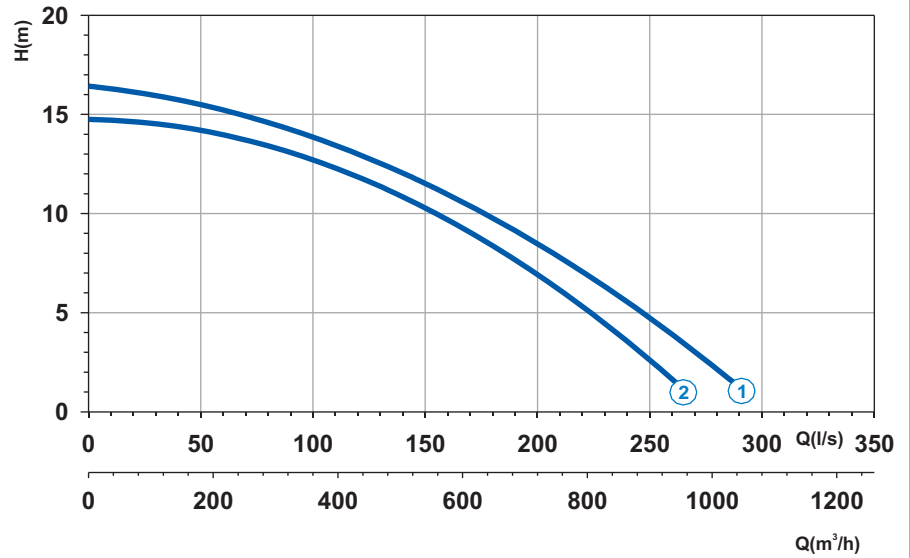


Krivulja N°	Code	Tip pumpe	MOTOR			ATEX code	
			Nomin. snaga P2 (kW)	Nomin. struja I (A)	Startna struja Is (A)		
1	7009953	G616R3C1-T102AA2	23,4	45,5	268	-	
2	7009951	G616R3C2-T102AA2	19,8	39	230	-	
3	7009952	G616R3C3-T102AA2	19,8	39	230	-	

Napajanje	3ph 400/690V 50Hz
R.P.M.	950
Slobodni prolaz (mm)	102
Izlaz (mm)	DN 200
Masa (Kg)	440

Dimenzije (mm)



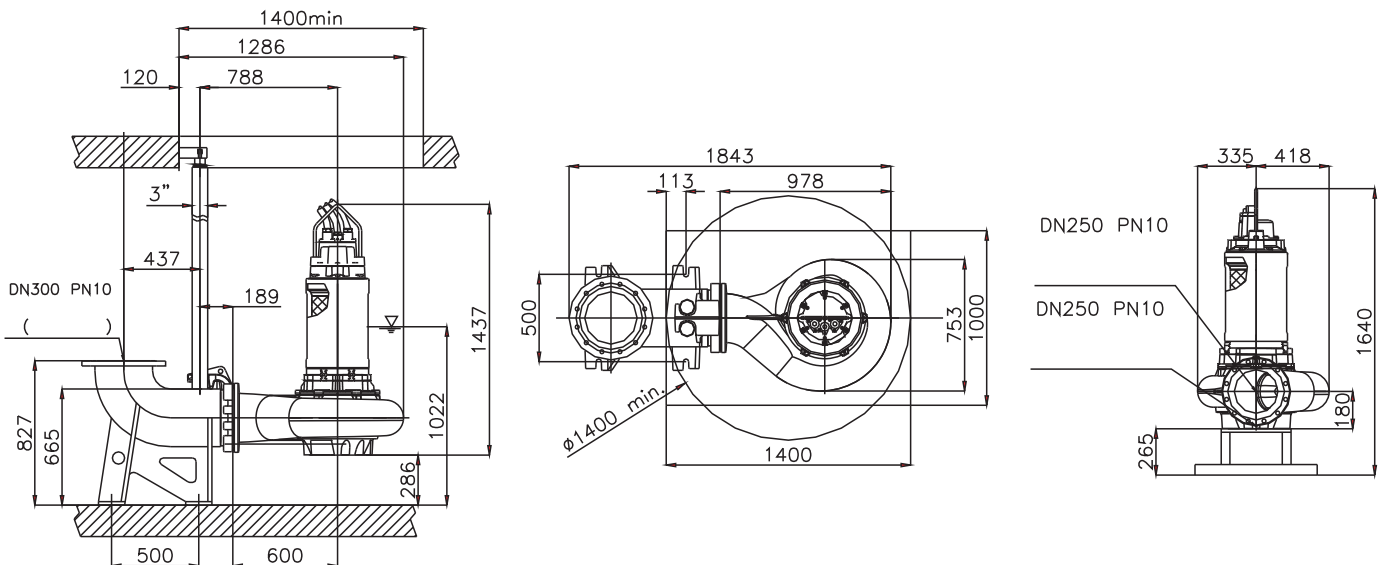


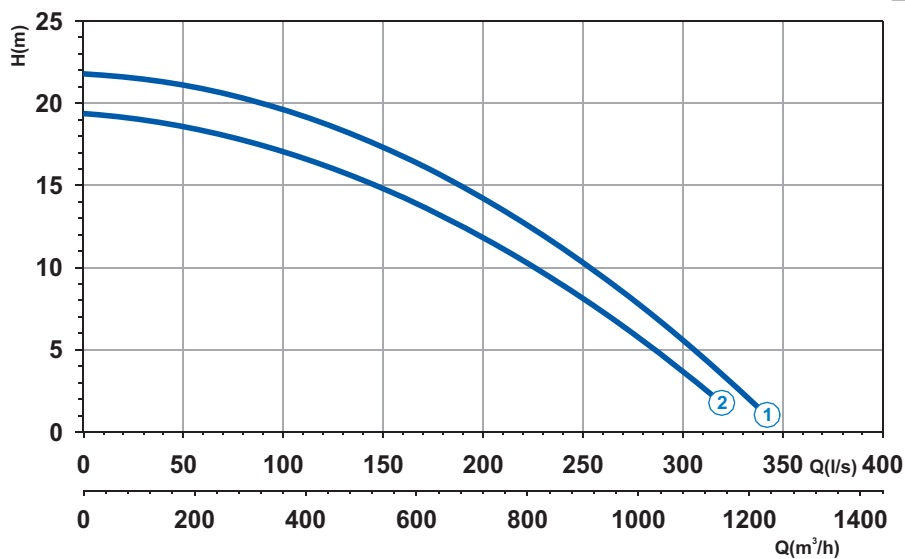
Napajanje	3ph 400/690V 50Hz
R.P.M.	950
Slobodni prolaz (mm)	105
Izlaz (mm)	DN 250
Masa (Kg)	540

Krivulja N°	Code	Tip pumpe	MOTOR			ATEX code	
			Nomin. snaga P2 (kW)	Nomin. struja I (A)	Startna struja Is (A)		
1	7009884	G618R3C3-V105AA2	29	57	296	-	
2	7009954	G616R3C4-V105AA2	23,4	45,5	268	-	

Dimenzije (mm)

MINIMALNI NIVO POTAPANJA

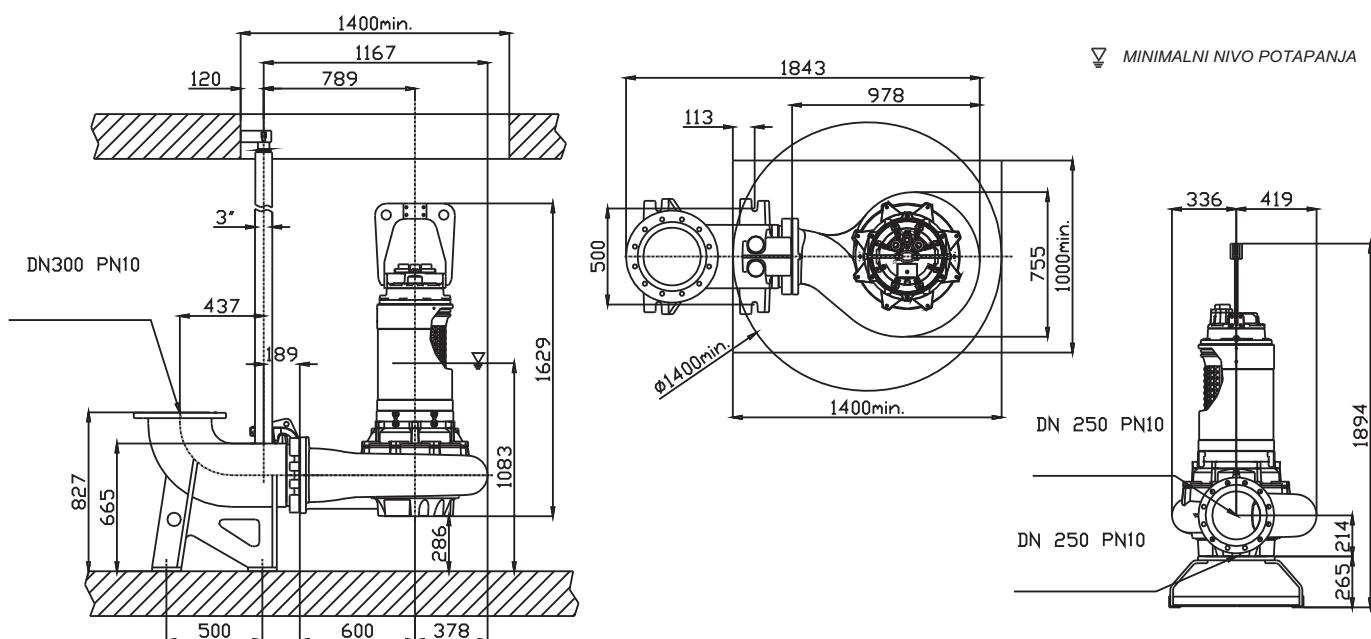


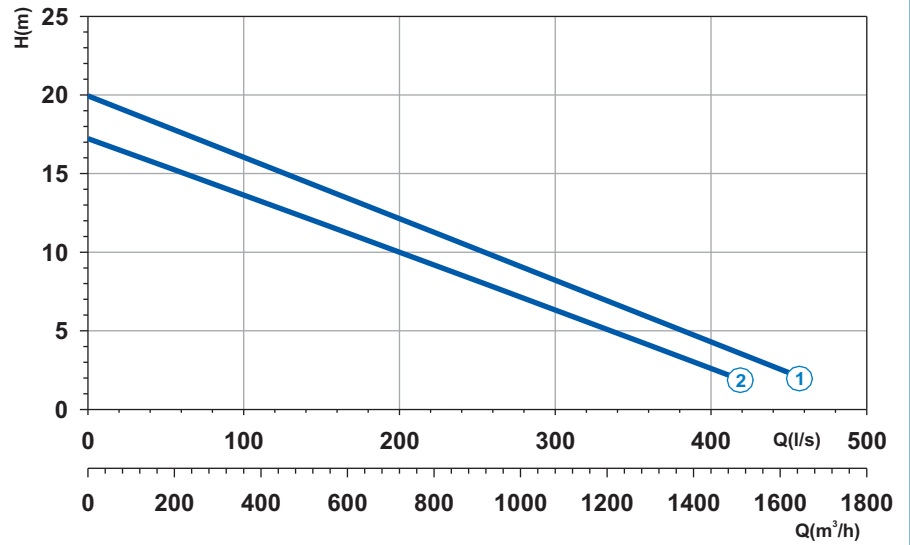


Krivulja N°	Code	Tip pumpe	MOTOR			ATEX code	
			Nomin. snaga P2 (kW)	Nomin. struja I (A)	Startna struja Is (A)		
1	7000480	G620R3C1-V105AA2	40	80	472	-	
2	7000482	G620R3C2-V105AA2	40	80	472	-	

Napajanje	3ph 400/690V 50Hz
R.P.M.	950
Slobodni prolaz (mm)	105
Izlaz (mm)	DN 250
Masa (Kg)	730

Dimenzije (mm)



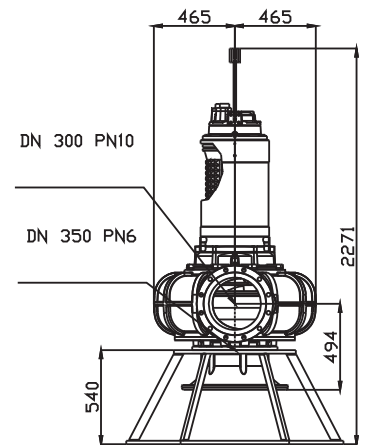
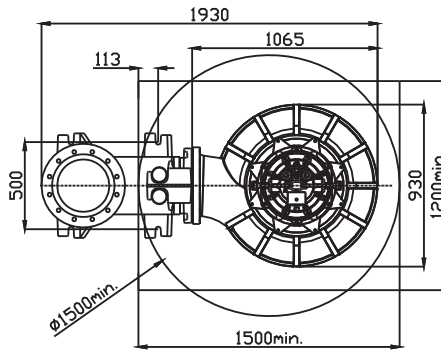
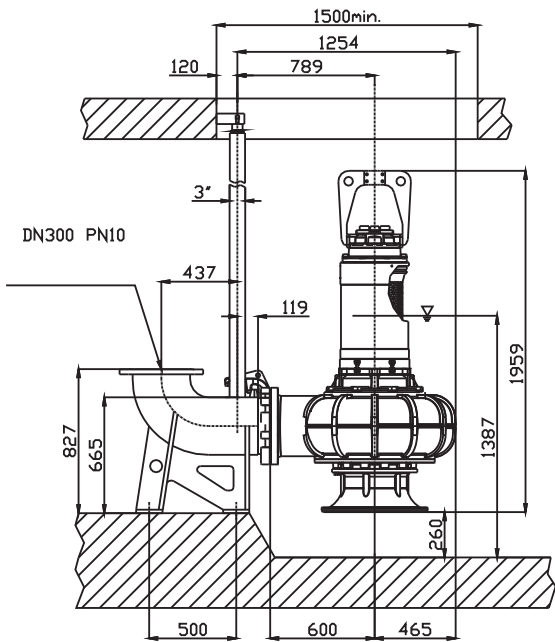


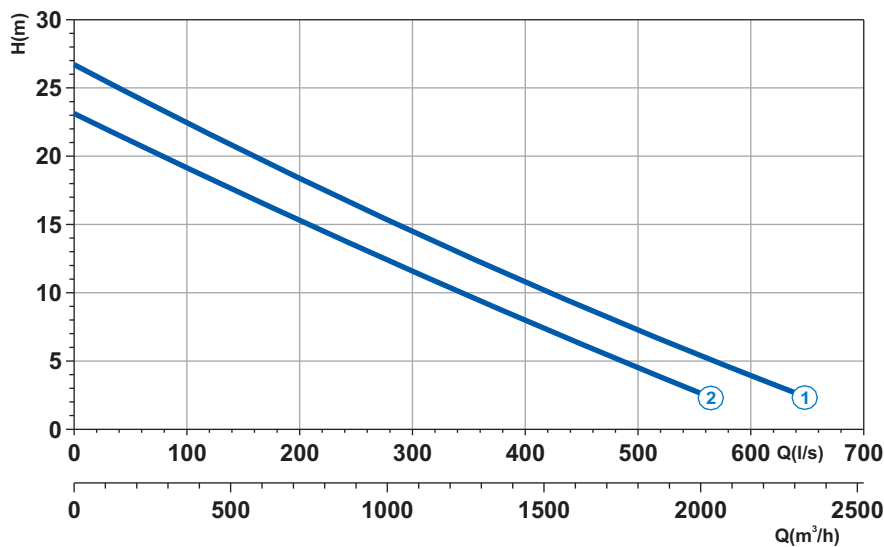
Napajanje	3ph 400/690V 50Hz
R.P.M.	950
Slobodni prolaz (mm)	140
Izlaz (mm)	DN 300
Masa (Kg)	1024

Krivulja N°	Code	Tip pumpe	MOTOR			ATEX code
			Nomin. snaga P2 (kW)	Nomin. struja I (A)	Startna struja Is (A)	
1	7006392	G620R4C3-W140AA2	40	80	472	-
2	7006393	G620R4C4-W140AA2	32	60,5	351	-

Dimenzije (mm)

▽ MINIMALNI NIVO POTAPANJA

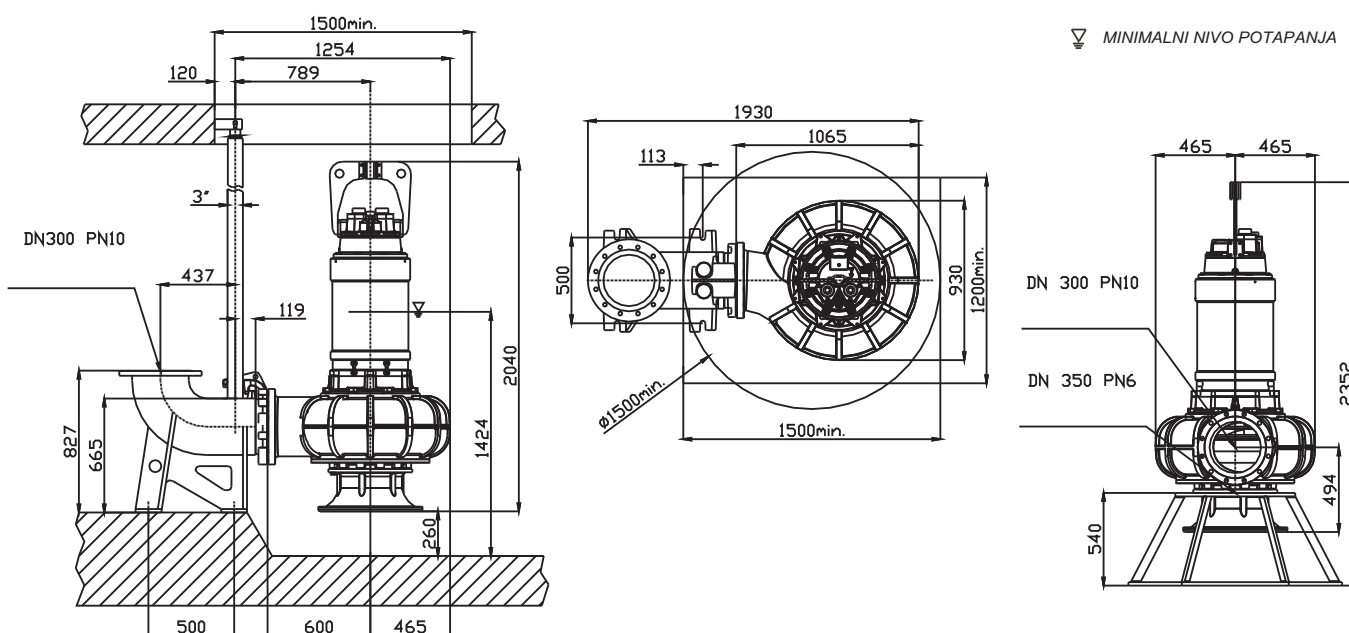


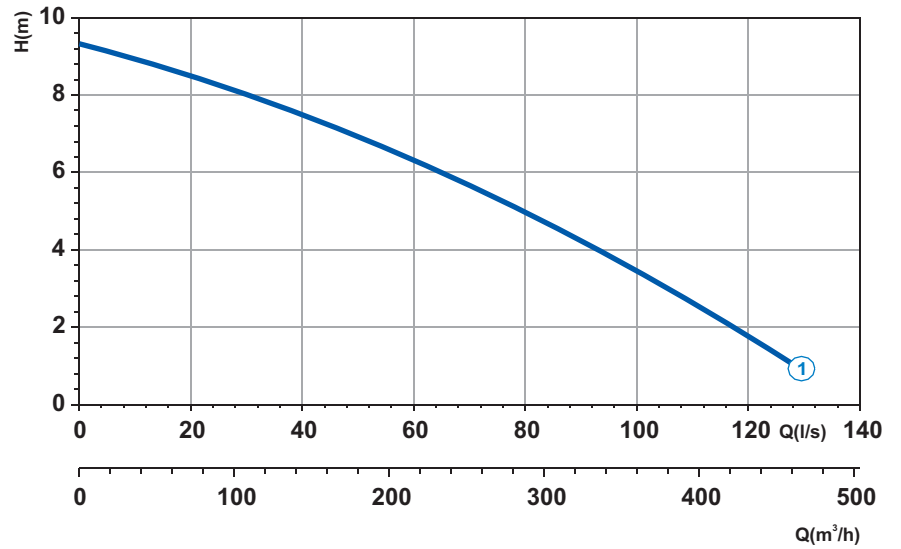


Krivulja N°	Code	Tip pompe	MOTOR			ATEX code	
			Nomin. snaga P2 (kW)	Nomin. struja I (A)	Startna struja Is (A)		
1	7000629	G625R4C1-W140AA2	55,8	108	637,2	-	
2	7000630	G625R4C2-W140AA2	55,8	108	637,2	-	

Napajanje	3ph 400/690V 50Hz
R.P.M.	950
Slobodni prolaz (mm)	140
Izlaz (mm)	DN 300
Masa (Kg)	1200

Dimenzije (mm)



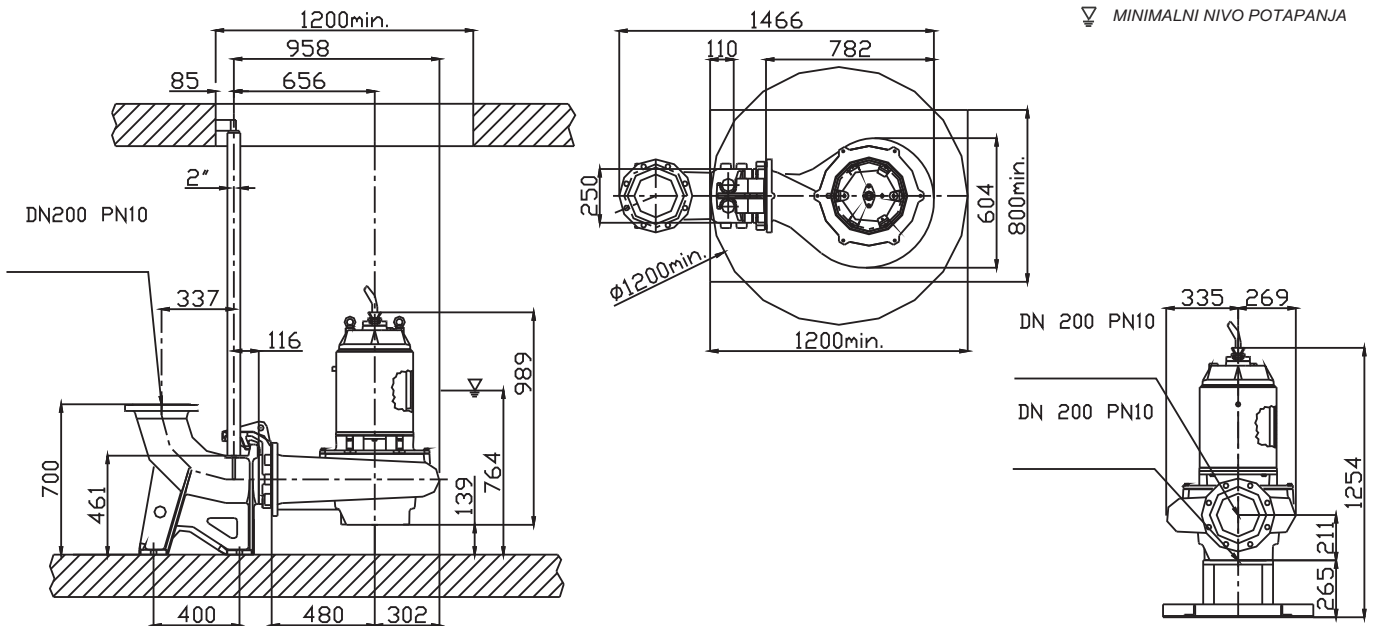


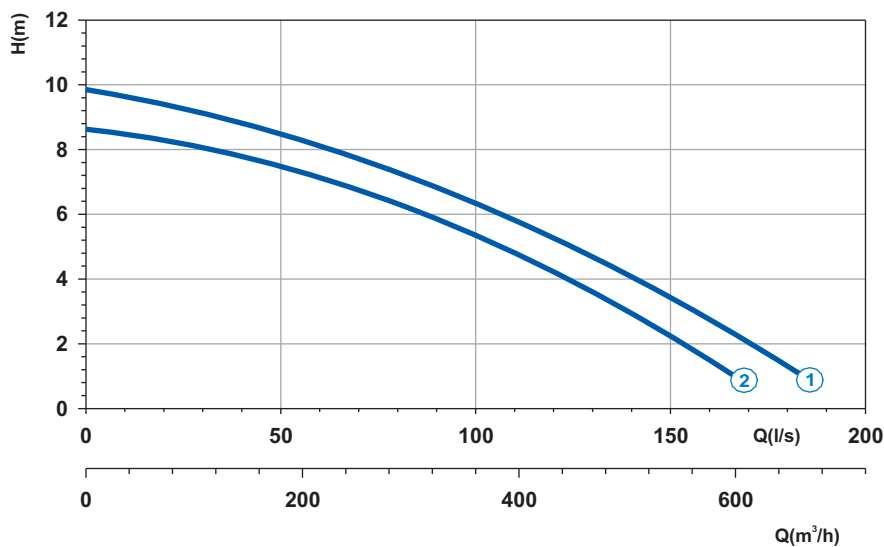
Napajanje	3ph 400/690V 50Hz
R.P.M.	750
Slobodni prolaz (mm)	102
Izlaz (mm)	DN 200
Masa (Kg)	414

Krivulja N°	Code	Tip pumpe	MOTOR			ATEX code	
			Nomin. snaga P2 (kW)	Nomin. struja I (A)	Startna struja Is (A)		
1	7002749	G818R2C1-T102XA2	8,3	18,5	92,5	-	

Dimenzije (mm)

▽ MINIMALNI NIVO POTAPANJA

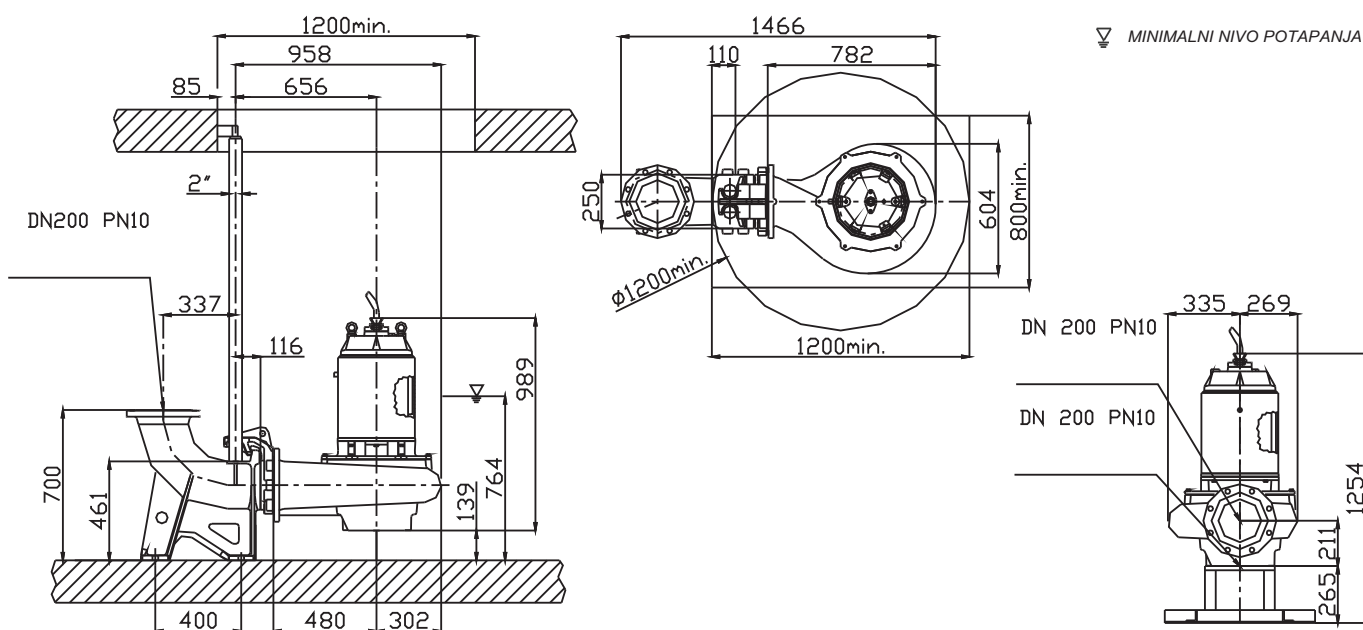


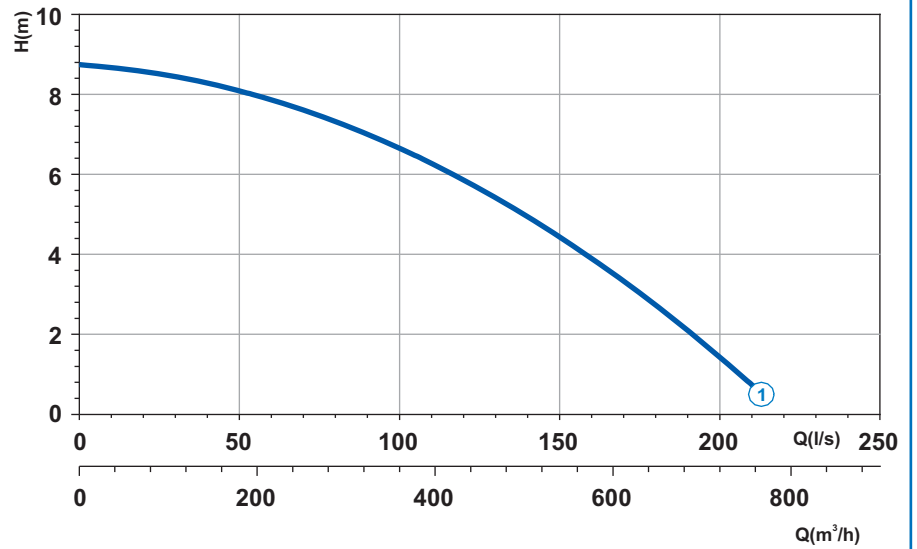


Krivulja N°	Code	Tip pumpe	MOTOR			ATEX code	
			Nomin. snaga P2 (kW)	Nomin. struja I (A)	Startna struja Is (A)		
1	7006413	G818R3C2-T102AA2	14,8	31	158,1	-	
2	7006412	G818R3C3-T102AA2	9,6	20	102	-	

Napajanje	3ph 400/690V 50Hz
R.P.M.	750
Slobodni prolaz (mm)	102
Izlaz (mm)	DN 200
Masa (Kg)	414

Dimenzije (mm)

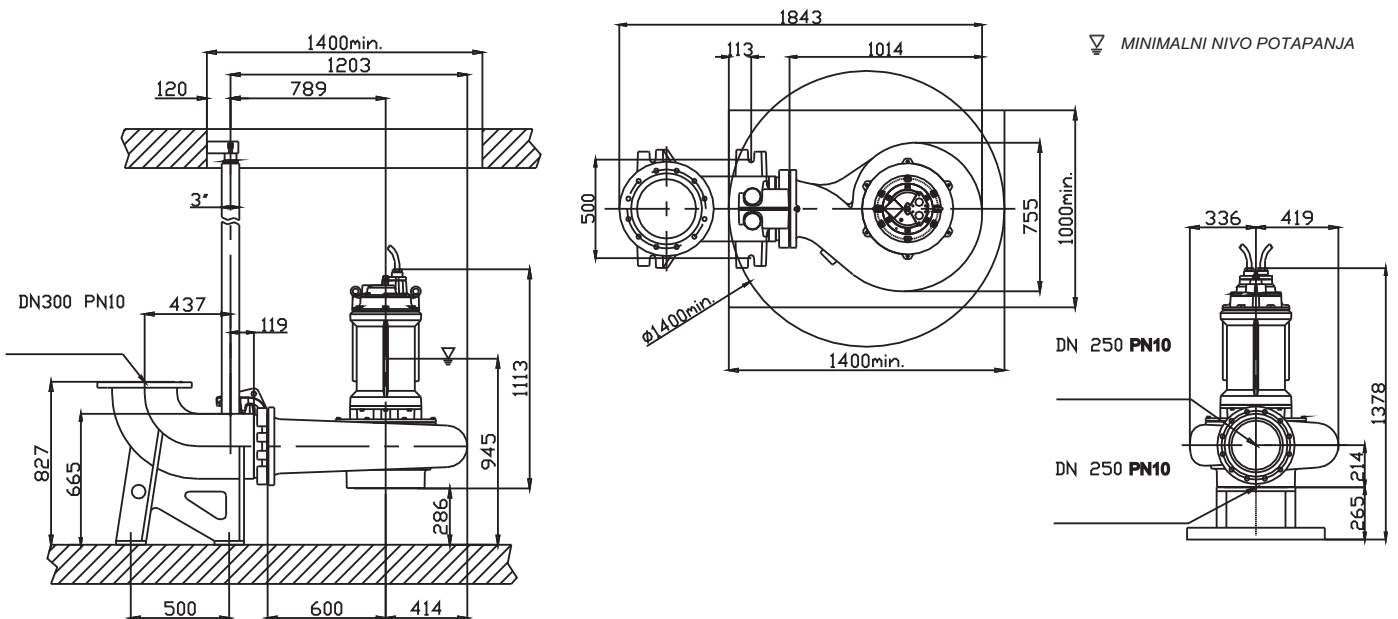


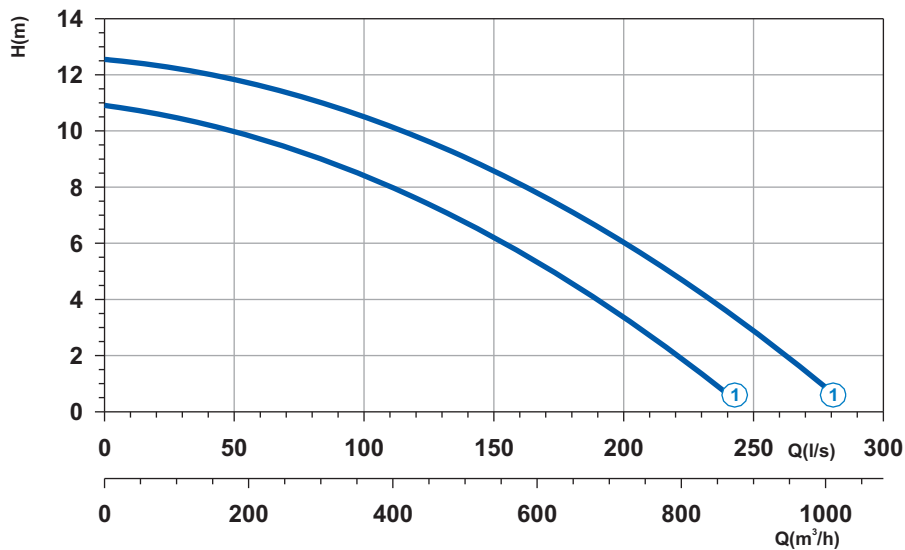


Napajanje	3ph 400/690V 50Hz
R.P.M.	750
Slobodni prolaz (mm)	105
Izlaz (mm)	DN 250
Masa (Kg)	500

Krivulja N°	Code	Tip pumpe	MOTOR			ATEX code	
			Nomin. snaga P2 (kW)	Nomin. struja I (A)	Startna struja Is (A)		
1	7007180	G818R3C4-V105AA2	14,8	31	158,1	-	

Dimenzije (mm)

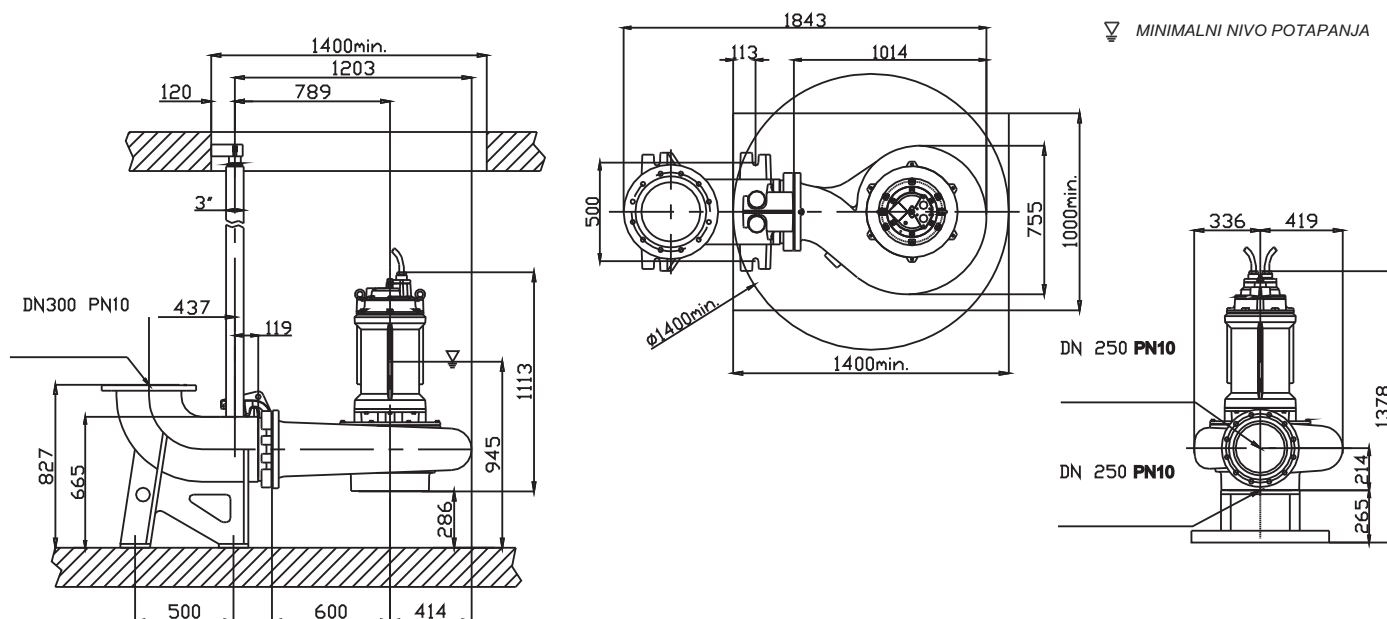


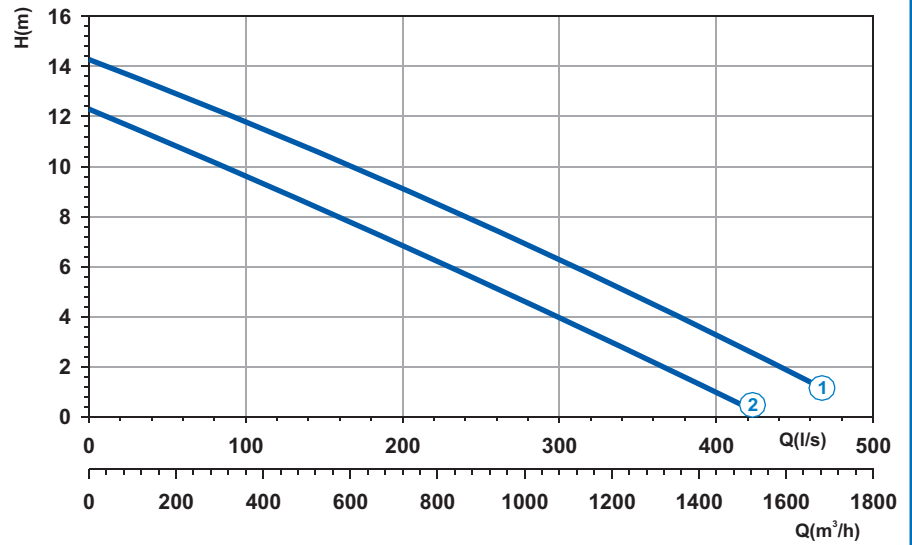


Krivulja N°	Code	Tip pumpe	MOTOR			ATEX code	
			Nomin. snaga P2 (kW)	Nomin. struja I (A)	Startna struja Is (A)		
1	7007766	G818R3C1-V105AA2	21,7	47,5	242	-	
2	7007608	G818R3C3-V105AA2	14,8	31	158	-	

Napajanje	3ph 400/690V 50Hz
R.P.M.	750
Slobodni prolaz (mm)	105
Izlaz (mm)	DN 250
Masa (Kg)	500

Dimenzije (mm)



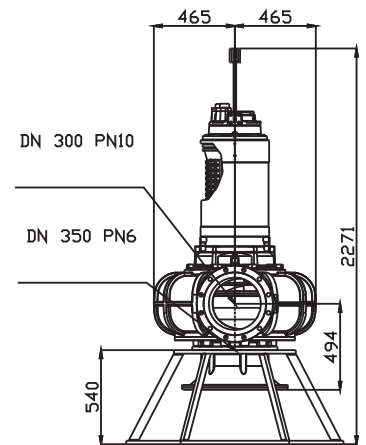
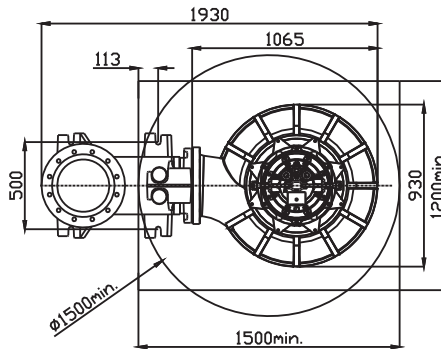
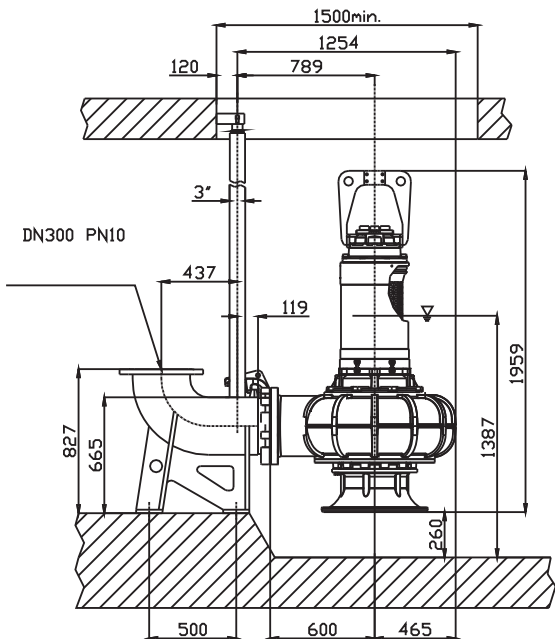


Napajanje	3ph 400/690V 50Hz
R.P.M.	750
Slobodni prolaz (mm)	140
Izlaz (mm)	DN 300
Masa (Kg)	1024

Krivulja N°	Code	Tip pompe	MOTOR			ATEX code
			Nomin. snaga P2 (kW)	Nomin. struja I (A)	Startna struja Is (A)	
1	7007090	G820R4C3-W140AA2	26,7	59	312,7	-
2	7002431	G820R4C2-W140AA2	21,7	50	265	-

Dimenzije (mm)

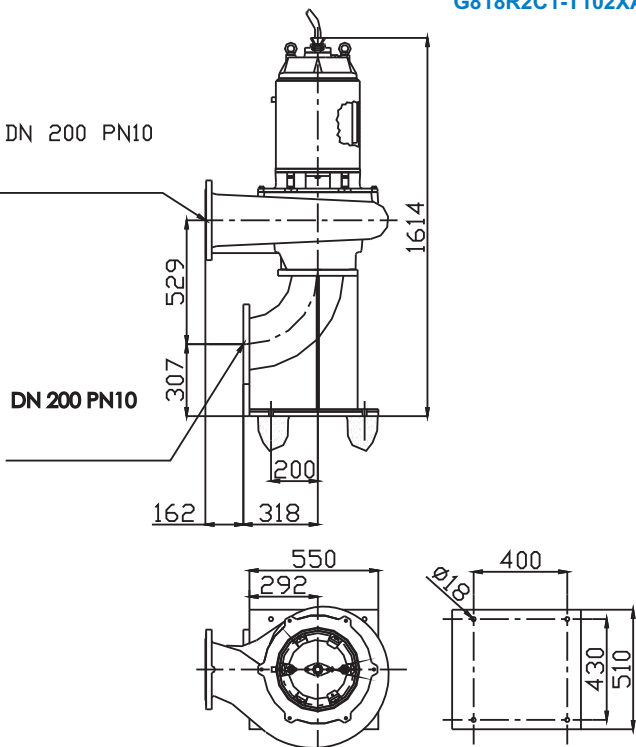
▽ MINIMALNI NIVO POTAPANJA



Suha instalacija

G818R3C2-T102AA2
G818R3C3-T102AA2
G818R2C1-T102XA2

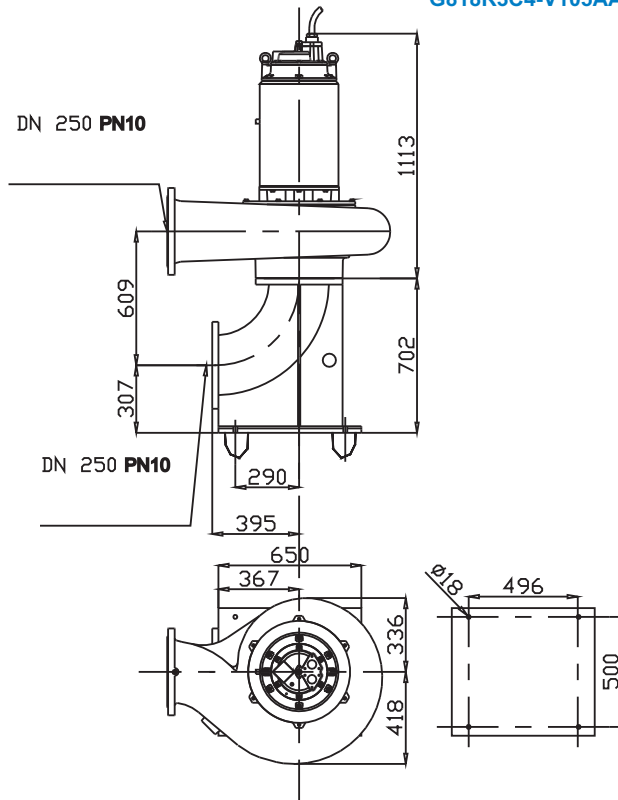
DN 200 PN10



DN 200 PN10

G818R3C4-V105AA2

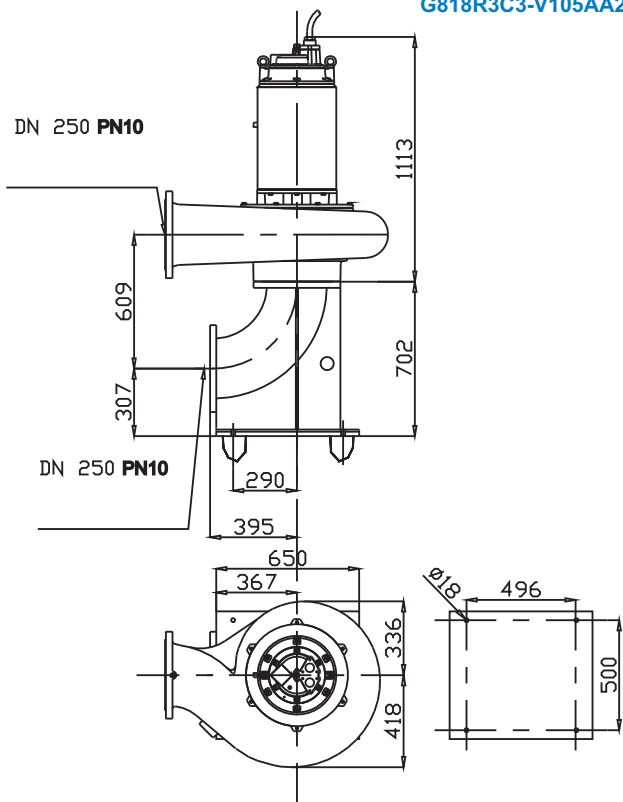
DN 250 PN10



DN 250 PN10

G818R3C1-V105AA2
G818R3C3-V105AA2

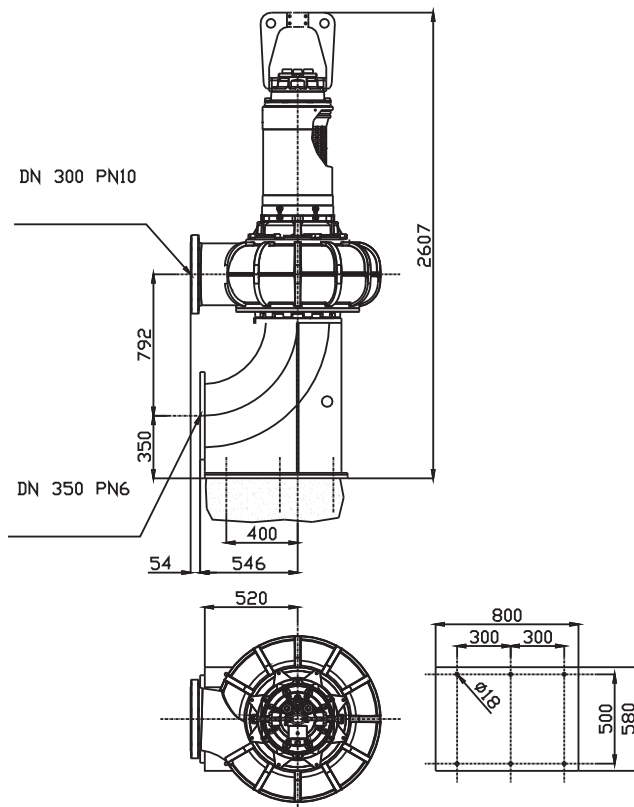
DN 250 PN10



DN 250 PN10

G820R4C2-W140AA2
G820R4C3-W140AA2

DN 300 PN10



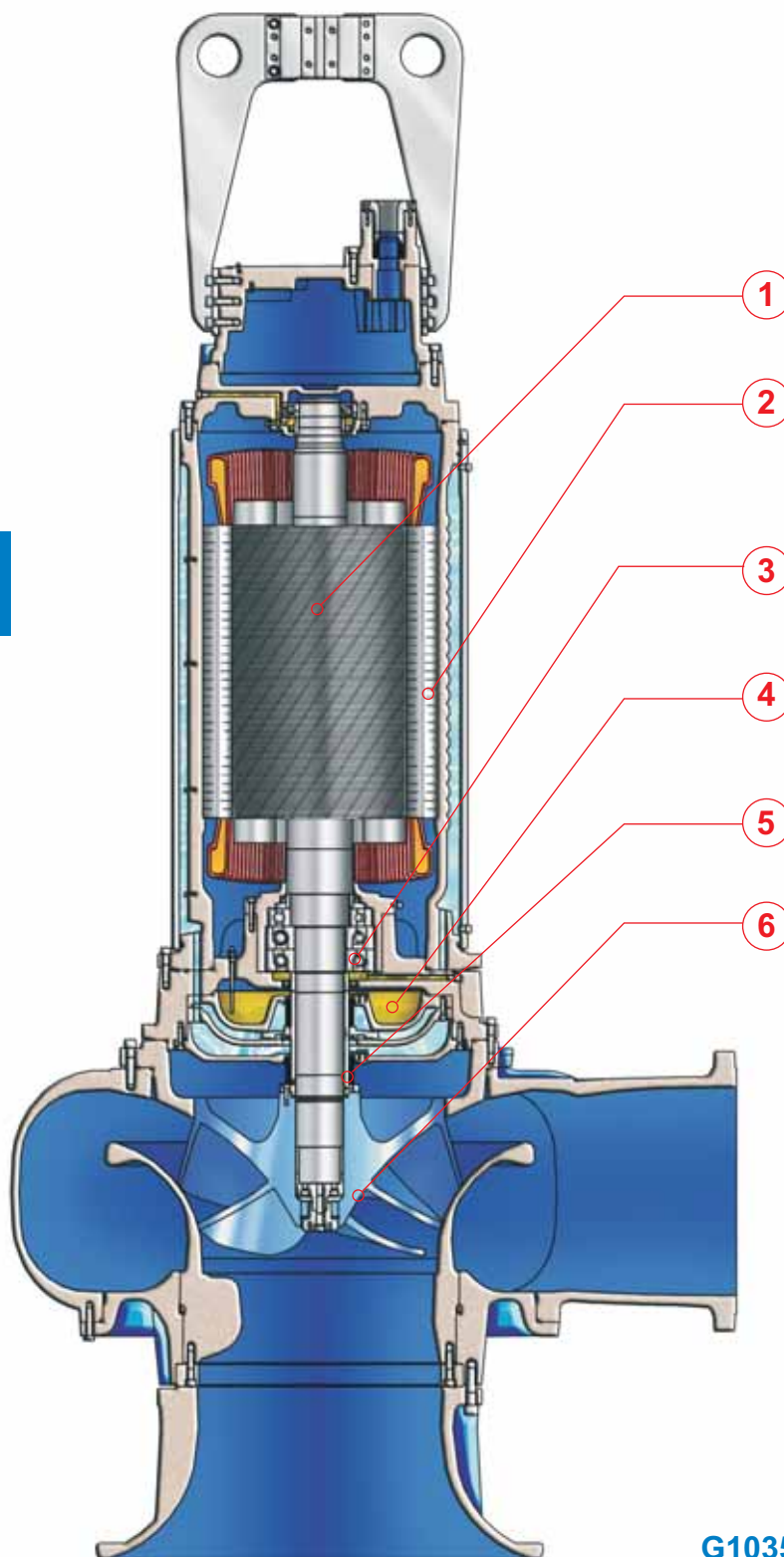
DN 350 PN6



Potopna pumpe sa višekanalnim rotorima >>> 8-10-12 polova



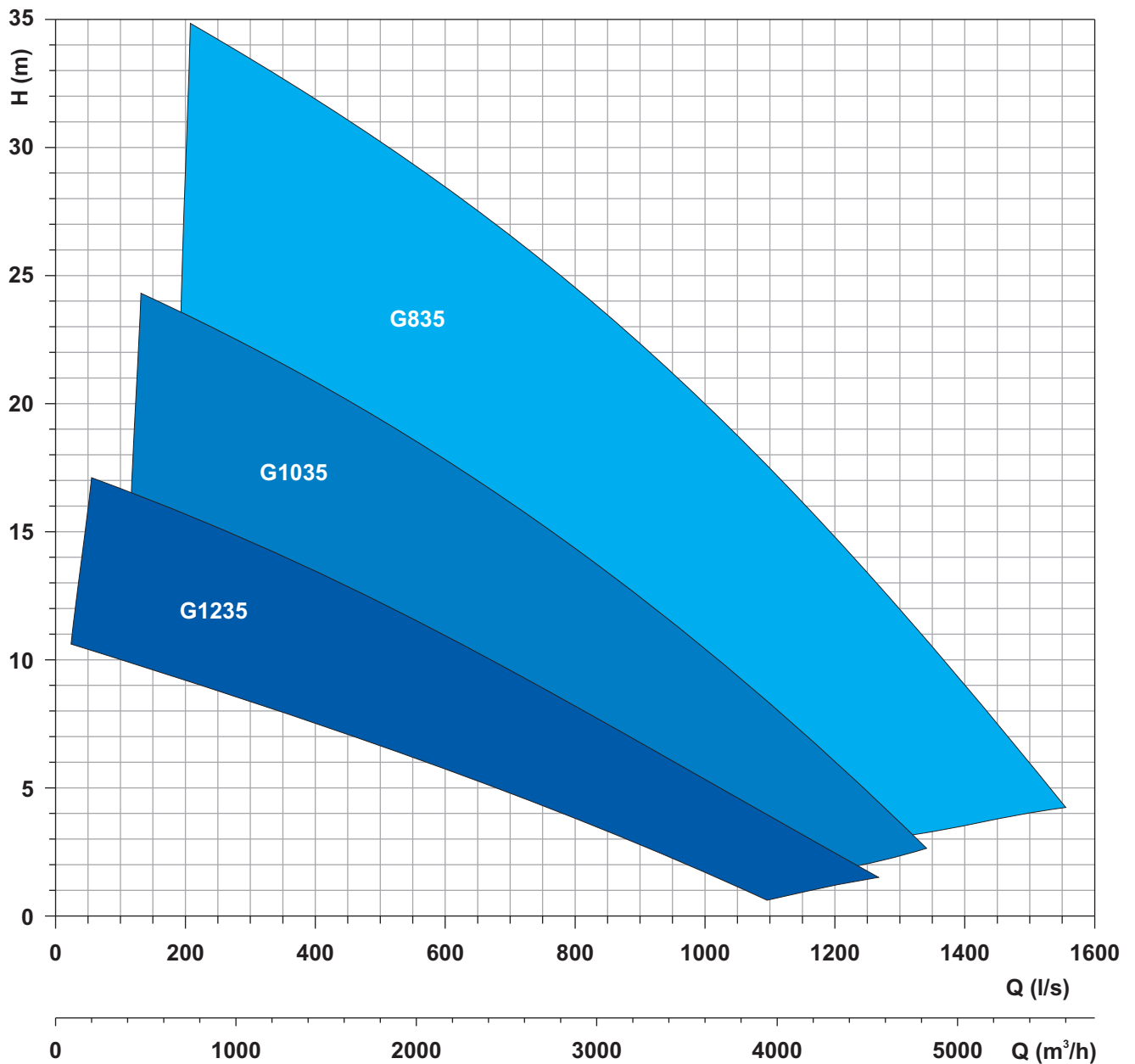
DN500



G1035R4C1-Z150AM2



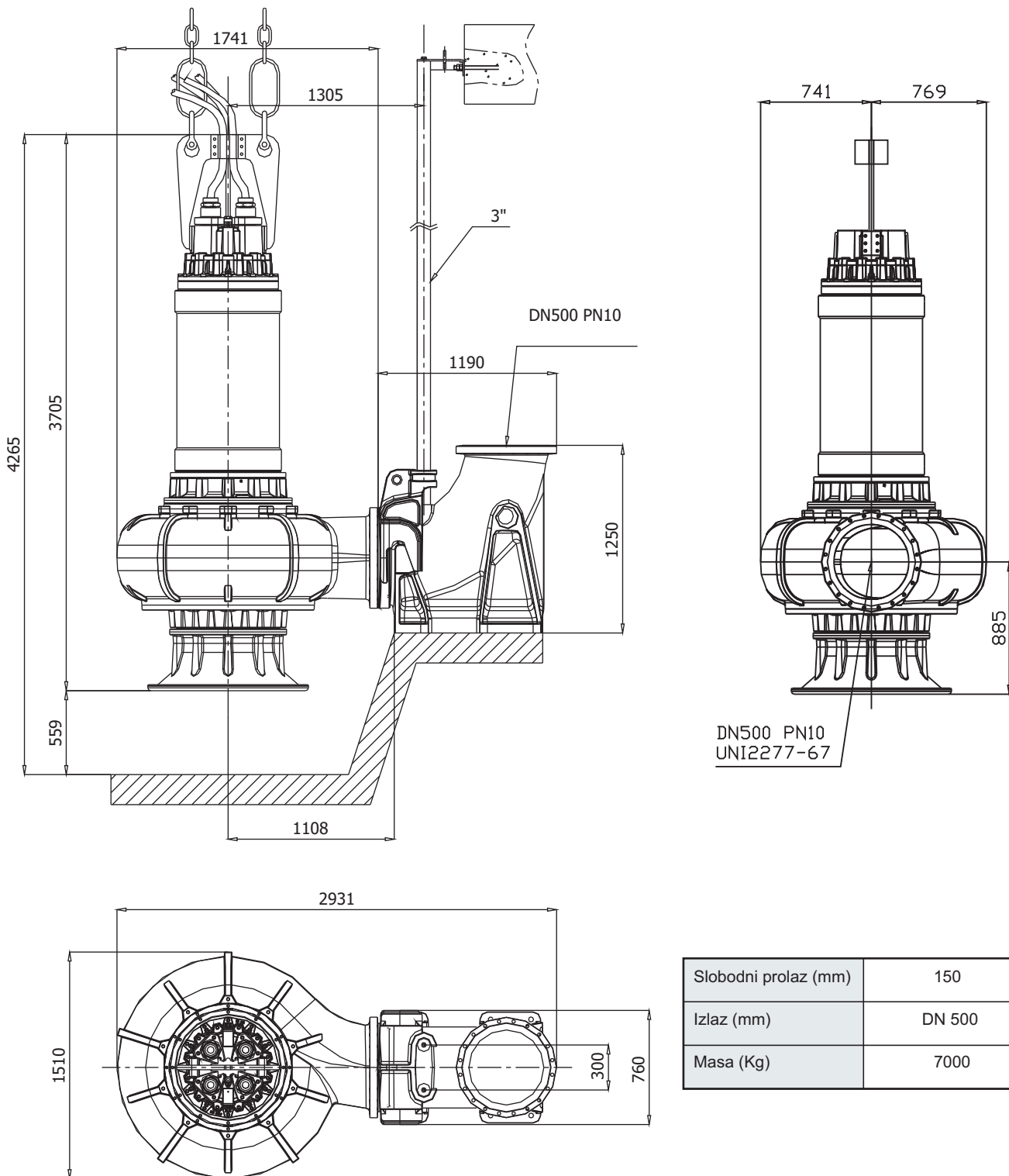
Potopne pumpe sa višekanalnim rotorima >>> 8-10-12 polova



Tip pumpe	Napajanje	Broj polova	Broj okretaja R.P.M.	Nomin. snaga P2 (kW)	Nomin. struja I (A)	Startna struja Is (A)
G835	3ph 400/690V 50Hz	8	730	272	490	2695
G1035	3ph 400/690V 50Hz	10	585	143	291	1600
G1235	3ph 400/690V 50Hz	12	485	120	285	1681



Dimenzije (mm)



Slobodni prolaz (mm)	150
Izlaz (mm)	DN 500
Masa (Kg)	7000

