

CENTRIFUGALNE PUMPE S DIESEL MOTORIMA VM,
ZRAKOM HLADENI OD 25 Kw – 70 Kw

Adoppi

Motopompe Centrifughe - Diesel
Diesel Centrifugal Motorpumps



INDUSTRIALI PER ECCELLENZA...
ridotta manutenzione e lunga durata.

SUN



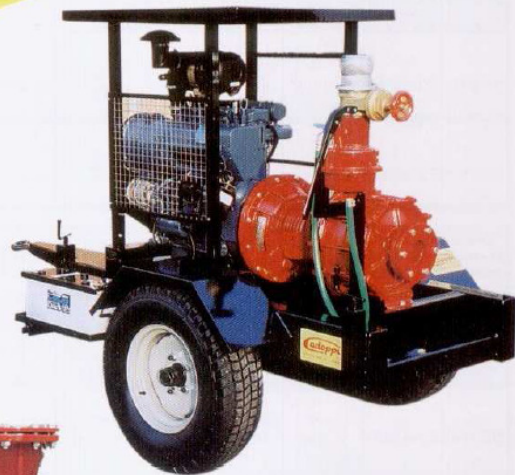
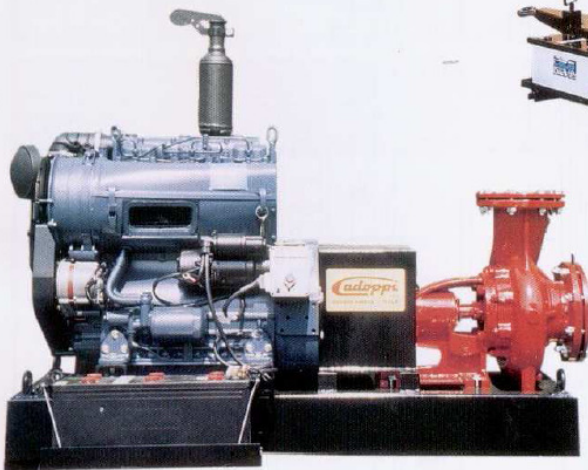
profondità
iposta che
agricoltori.
5, in ogni
ti ad aria
io giorno.

Caratter
Motori dies

Mo

Raffreddamento ad aria
Air cooling

175





MOTOPOMPE DIESEL - **Centrifughe**
Centrifugal - DIESEL MOTORPUMP



Prestazioni motopompa a: Motorpump performances at:	RPM 1450	Motore: Raffreddato ad aria Engine: Air cooling
--	-----------------	--

TIPO MOTOPOMPA MOTORPUMP TYPE	CARATTERISTICHE MOTORE - ENGINE FEATURES					MODELLO POMPA PUMP MODEL	TIPO ACCOPPIAMENTO COUPLING TYPE		BOCCHIE POMPA PORTS PUMP		PORTATA DELIVERY L/1'	PREVALENZA HEAD MT	HP ASSORBITI ABSORBED
	MOTORE ENGINE	HP (N)	RPM	N° CILINDRI CYLINDERS	AVVIAMENTO STARTING		GIUNTO JOINT	DIRETTO DIRECT	DNa	DNm			
DC3105TE2-P804C3	VM 3105TE2	60	2300	3	ELETTRICO 12 V. ELECTRIC 12 V.	CS-P804C3S	●		mm.	mm.	750	95	30,5
											1250	79	36,4
											1750	59	38,4
											2000	52	44,0
DC3105E2-P803B3	VM 3105 E2	48	2300	3	ELETTRICO 12 V. ELECTRIC 12 V.	CS-P803B3S	●		mm.	mm.	750	76,5	24,0
											1250	70	30,0
											1750	55	35,0
											2300	34	38,0
DC3105E2-M100CS	VM 3105 E2	48	2300	3	ELETTRICO 12 V. ELECTRIC 12 V.	CS-M100CS	●		mm.	mm.	1000	38	18,5
											1600	36	22,0
											2500	34	26,0
											3250	30,5	28,0
DC4105TE2-P1002DS	VM 4105TE2	95	2300	4	ELETTRICO 12 V. ELECTRIC 12 V.	CS-P1002DS	●		mm.	mm.	1200	82	39,0
											2000	75	75,0
											2800	68	56,0
											3450	53	64,0
DC4105TE2-M100AS	VM 4105TE2	95	2300	4	ELETTRICO 12 V. ELECTRIC 12 V.	CS-M100AS	●		mm.	mm.	1000	60	28,0
											1600	57	35,0
											2500	54	44,0
											3500	47	53,0
DC3105E2-M200FS	VM 3105E2	48	2300	3	ELETTRICO 12 V. ELECTRIC 12 V.	CS-M200FS	●		mm.	mm.	4000	19,8	28,3
											5500	18,9	32,1
											7000	17,2	35,3
											9000	13,4	37,2
DC3105E2-M25014S	VM 3105E2	48	2300	3	ELETTRICO 12 V. ELECTRIC 12 V.	CS-M25014S	●		mm.	mm.	5500	15	32,8
											7000	14,9	34,2
											12000	11,4	37,0
											14000	8,4	35,0

Prestazioni motopompa a: Motorpump performances at:	RPM 1750	Motore: Raffreddato ad aria Engine: Air cooling
--	-----------------	--

TIPO MOTOPOMPA MOTORPUMP TYPE	CARATTERISTICHE MOTORE - ENGINE FEATURES					MODELLO POMPA PUMP MODEL	TIPO ACCOPPIAMENTO COUPLING TYPE		BOCCHIE POMPA PORTS PUMP		PORTATA DELIVERY L/1'	PREVALENZA HEAD MT	HP ASSORBITI ABSORBED
	MOTORE ENGINE	HP (N)	RPM	N° CILINDRI CYLINDERS	AVVIAMENTO STARTING		GIUNTO JOINT	DIRETTO DIRECT	DNa	DNm			
DC3105E2-9330V	VM 3105E2	48	2300	3	ELETTRICO 12 V. ELECTRIC 12 V.	CFA802-9330V		●	mm.	mm.	700	83	28,0
											1000	81	32,5
											1600	69	42,0
											2000	61	44,0
DC4105TE2-9330	VM 4105RE2	95	2100	4	ELETTRICO 12 V. ELECTRIC 12 V.	CFA803-9330		●	mm.	mm.	800	117	40,0
											1400	110	50,0
											1800	98	57,5
											2200	76	65,0
DC4105TE2-P804C3S	VM 4105RE2	95	2100	4	ELETTRICO 12 V. ELECTRIC 12 V.	CS-P804C3S	●		mm.	mm.	750	137	45,5
											1250	125	58
											1750	106	65,4
											2300	71	68
DC3105TE2-M100D	VM 3105TE2	60	2300	3	ELETTRICO 12 V. ELECTRIC 12 V.	CS-M100DS	●		mm.	mm.	1000	41,8	21,0
											2000	39,6	29,0
											3000	36,5	38,0
											3800	32	43,0



MOTOPOMPE DIESEL - Centrifughe
Centrifugal - DIESEL MOTORPUMP



Prestazioni motopompa a: Motorpump performances at:	RPM 1750	Motore: Engine:	Raffreddato ad aria Air cooling
--	-----------------	--------------------	------------------------------------

TIPO MOTOPOMPA MOTORPUMP TYPE	CARATTERISTICHE MOTORE - ENGINE FEATURES					MODELLO POMPA PUMP MODEL	TIPO ACCOPPIAMENTO COUPLING TYPE		BOCCHIE POMPA PORTS PUMP		PORTATA DELIVERY L/1'	PREVALENZA HEAD MT	HP ASSORBITI ABSORBED
	MOTORE ENGINE	HP (H)	RPM	N° CILINDRI CYLINDERS	AVVIAMENTO STARTING		GIUNTO JOINT	DIRETTO DIRECT	DNa	DNm			
DC4105TE2-M100B	VM 4105TE2	95	2100	4	ELETTRICO 12 V. ELECTRIC 12 V.	CS-M100BS	●		mm.	mm.	1000	74,5	38,0
											2000	71	52,0
									125	100	3000	66,5	66,0
											4000	58	77,0
DC4105TE2-M25017	VM 4105TE2	95	2100	4	ELETTRICO 12 V. ELECTRIC 12 V.	CS-M25017S	●		mm.	mm.	7000	21,8	4,48
											9000	21,4	60,4
									250	250	14000	17,4	65,8
											17000	12,3	62,0
DC4105TE2-M450850DS	VM 4105TE2	95	2100	4	ELETTRICO 12 V. ELECTRIC 12 V.	CS-M450850DS (RPM 850)	●		mm.	mm.	14000	14	69
											20000	11,8	58
									450	400	28000	7,5	47
											34000	4	45

Prestazioni motopompa a: Motorpump performances at:	RPM 1800	Motore: Engine:	Raffreddato ad aria Air cooling
--	-----------------	--------------------	------------------------------------

TIPO MOTOPOMPA MOTORPUMP TYPE	CARATTERISTICHE MOTORE - ENGINE FEATURES					MODELLO POMPA PUMP MODEL	TIPO ACCOPPIAMENTO COUPLING TYPE		BOCCHIE POMPA PORTS PUMP		PORTATA DELIVERY L/1'	PREVALENZA HEAD MT	HP ASSORBITI ABSORBED
	MOTORE ENGINE	HP (H)	RPM	N° CILINDRI CYLINDERS	AVVIAMENTO STARTING		GIUNTO JOINT	DIRETTO DIRECT	DNa	DNm			
DC3105TE2-M200IS	VM 3105TE2	60	2300	3	ELETTRICO 12 V. ELECTRIC 12 V.	CS-M200IS	●		mm.	mm.	5000	20,7	37,0
											7000	18,6	42,0
									200	200	8000	16,8	43,7
											10000	9,8	43,7
DC4105TE2-M200E	VM 4105TE2	95	2100	4	ELETTRICO 12 V. ELECTRIC 12 V.	CS-M200ES	●		mm.	mm.	5000	32,7	58,5
											7000	31,7	68,5
									200	200	8000	30,5	72,0
											10000	25	76,0

Prestazioni motopompa a: Motorpump performances at:	RPM 2000	Motore: Engines:	Raffreddato ad aria Air cooling
--	-----------------	---------------------	------------------------------------

TIPO MOTOPOMPA MOTORPUMP TYPE	CARATTERISTICHE MOTORE - ENGINE FEATURES					MODELLO POMPA PUMP MODEL	TIPO ACCOPPIAMENTO COUPLING TYPE		BOCCHIE POMPA PORTS PUMP		PORTATA DELIVERY L/1'	PREVALENZA HEAD MT	HP ASSORBITI ABSORBED
	MOTORE ENGINE	HP (H)	RPM	N° CILINDRI CYLINDERS	AVVIAMENTO STARTING		GIUNTO JOINT	DIRETTO DIRECT	DNa	DNm			
DC3105TE2-9310	VM 3105TE2	60	2300	3	ELETTRICO 12 V. ELECTRIC 12 V.	CFA802-9310		●	mm.	mm.	1000	98	41,0
											1400	92	45,0
											1800	82	54,0
											2200	70	56,0
DC4105TE2-M150KAO	VM 4105TE2	95	2100	4	ELETTRICO 12 V. ELECTRIC 12 V.	CS-M150KAO	●		mm.	mm.	2250	59	44,0
											3250	57	54,8
									150	125	4250	52	65,0
											5600	36,3	73,8



MOTOPOMPE DIESEL - **Centrifughe**
Centrifugal - DIESEL MOTORPUMP



Prestazioni motopompa a: Motorpump performances at:	RPM 2200	Motori: Engines:	Raffreddato ad aria Air cooling
--	-----------------	---------------------	------------------------------------

TIPO MOTOPOMPA MOTORPUMP TYPE	CARATTERISTICHE MOTORE - ENGINE FEATURES					MODELLO POMPA PUMP MODEL	TIPO ACCOPPIAMENTO COUPLING TYPE		BOCCHIE POMPA PORTS PUMP		PORTATA DELIVERY L/1'	PREVALENZA HEAD MT	HP ASSORBITI ABSORBED
	MOTORE ENGINE	HP (N)	RPM	N° CILINDRI CYLINDERS	AVVIAMENTO STARTING		GIUNTO JOINT	DIRETTO DIRECT	DNa	DNm			
DC2105E2-652	VM 2105E2	35	2300	2	ELETTRICO 12 V. ELECTRIC 12 V.	CFA652-9260V		●	mm.	mm.	500	84	20
									80	65	700	82	23
											900	77	26
											1200	67	30,5
DC3105TE2-9330	VM 3105TE2	60	2300	3	ELETTRICO 12 V. ELECTRIC 12 V.	CFA80-9330		●	mm.	mm.	700	80,6	32,0
									100	80	1000	80	36,5
											1800	72,5	47,5
											2200	65	52,0
DC2105E2-6260V	VM 2105E2	35	2300	2	ELETTRICO 12 V. ELECTRIC 12 V.	CFA553-6260V		●	mm.	mm.	300	121	15
									65	55	500	112	19
											700	98	23
											900	71	26
DC3105E2-P554AS	VM 3105E2	48	2300	3	ELETTRICO 12 V. ELECTRIC 12 V.	CS-P554AS		●	mm.	mm.	300	162	19
									65	55	500	145	26
											700	128	32
											900	100	38
DC3105E2-P654D2S	VM SUN 3105	63	2600	3	ELETTRICO 12 V. ELECTRIC 12 V.	CS-P654D2S		●	mm.	mm.	500	135	32
									80	65	700	132	37
											900	124	42
											1200	107	48
DC2105E2-9260	VM 2105E2	35	2300	2	ELETTRICO 12 V. ELECTRIC 12 V.	CFA65-9260K		●	mm.	mm.	350	52	13
									80	65	700	50	15
											1000	46	10
											1400	36	22
DC2105E2-18258	VM 2105E2	35	2300	2	ELETTRICO 12 V. ELECTRIC 12 V.	CFA80-18258		●	mm.	mm.	1000	51	21
									100	80	2000	49	26
											2400	48	29
											3000	42	34
DC2105E2-M150AS	VM 2105E2	35	2300	2	ELETTRICO 12 V. ELECTRIC 12 V.	CS-M150AS		●	mm.	mm.	2000	27	20
									150	150	2800	26	23
											3600	21	24
											4500	16	25